

1140-MN-B

CHASSIS MOUNT – SHIELDED
1:5 MICROPHONE STEP UP TRANSFORMER

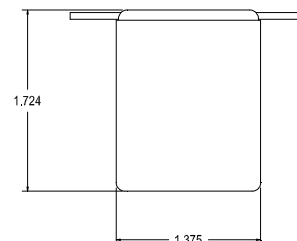
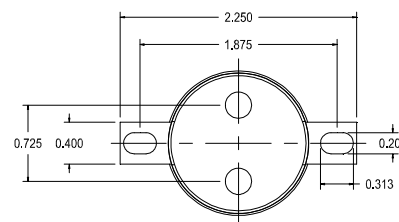
This transformer offers a high step up ratio and operates in the 20 Hz to 20 KHz range.

The mu metal can provides excellent shielding from a broad range of external sources. The nickel core provides high permeability combined with low losses for a very wide band width

Typical applications for input stage on vacuum tube or FET style amplifiers.

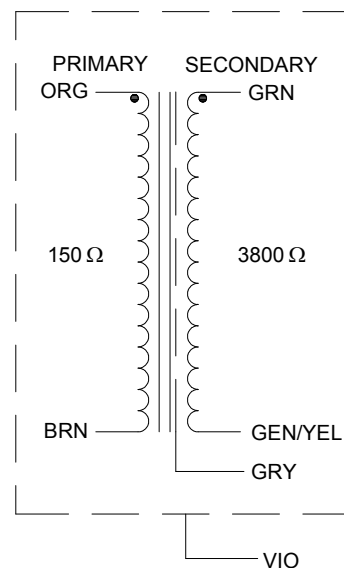
ELECTRICAL SPECIFICATIONS

Characteristic	Conditions	Typical
Input Impedance		150 Ω
Output Impedance		3800 Ω
Primary Input Impedance	@ 1kHz -20dbu Test Circuit 3	1.7KΩ
Secondary Output Impedance	@ 1kHz -20dbu Test Circuit 4	4.6KΩ
Maximum input Level	@ 20Hz RL = 600Ω	+7.0dbu
DCR		
Primary	@20°C	17.25 Ω
Secondary	@20°C	450 Ω
Frequency Response	@ 20 Hz, -20 dbu, Test Circuit 3	-0.04db
	@ 20 kHz, -20 dbu, Test Circuit 3	0.01db
Turns ratio		1:5
Common Mode Rejection Level	@ 60 Hz Test Circuit 2	90db
	3kHz Test Circuit 2	75db
THD	@ 1kHz -20 dbu Test Circuit 1	0.015%
	@ 20Hz -20 dbu Test Circuit 1	0.001%
Phase Shift	@ 20 Hz Test Circuit 1	0.6°
	@ 20 kHz Test Circuit 1	6.0°
Capacitance	Primary to Shield and Case	780pf
	Secondary to Shield and Case	450pf
Dielectric Strength		500 Vrms



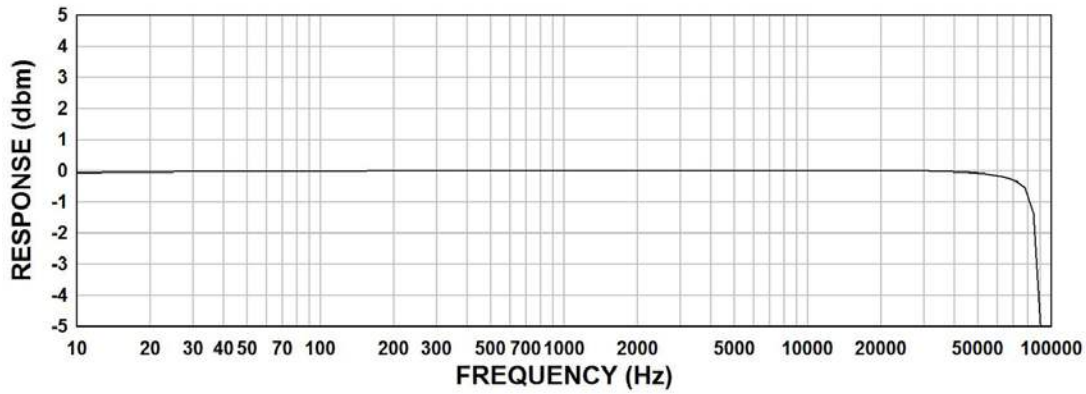

1140-MN-B
 ORG - BRN: 150 Ω
 GRN - GRN/YEL: 3800 Ω
 GRY: SHIELD VIO: CAN
 MADE IN CANADA DATE

SCHEMATIC DIAGRAM



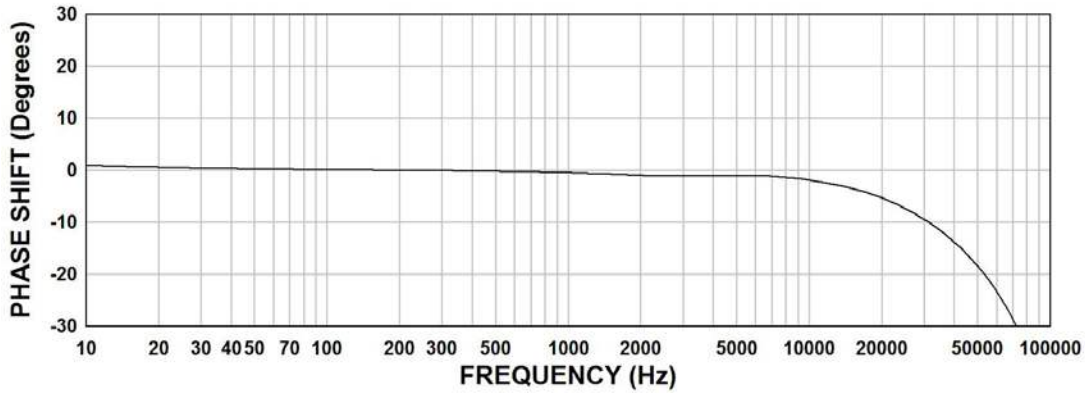
1140-MN-B Frequency Response

Input Level -20dbu
Rs= 150Ω, RL= 3800Ω



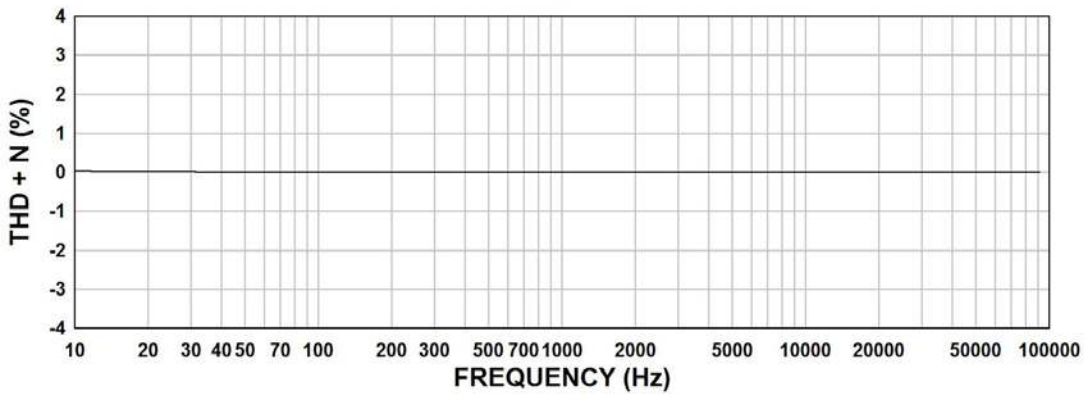
1140-MN-B Phase Shift

Input Level -20dbu
Rs= 150Ω, RL= 3800Ω

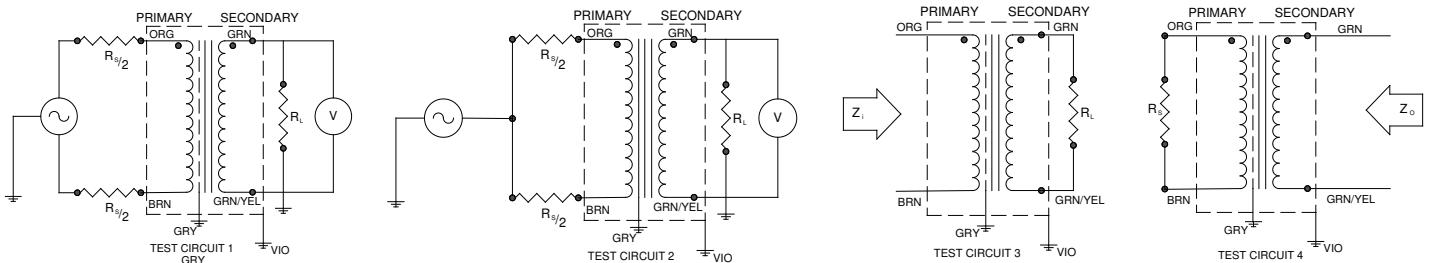


1140-MN-B THD+N

Input Level -20dbu
Rs= 150Ω, RL= 3800Ω



TYPICAL TEST CIRCUIT



Measurement instruments: Hp4192a Impedance Analyzer; Hp3456a DVM; Keithley 2002 DVM; D scope series iii audio analyzer

This drawing and the information in it is the property of Hammond Manufacturing. It may not be reproduced, transmitted or used in any manner whatsoever without the written permission of Hammond Manufacturing. Data subject to change without notice.