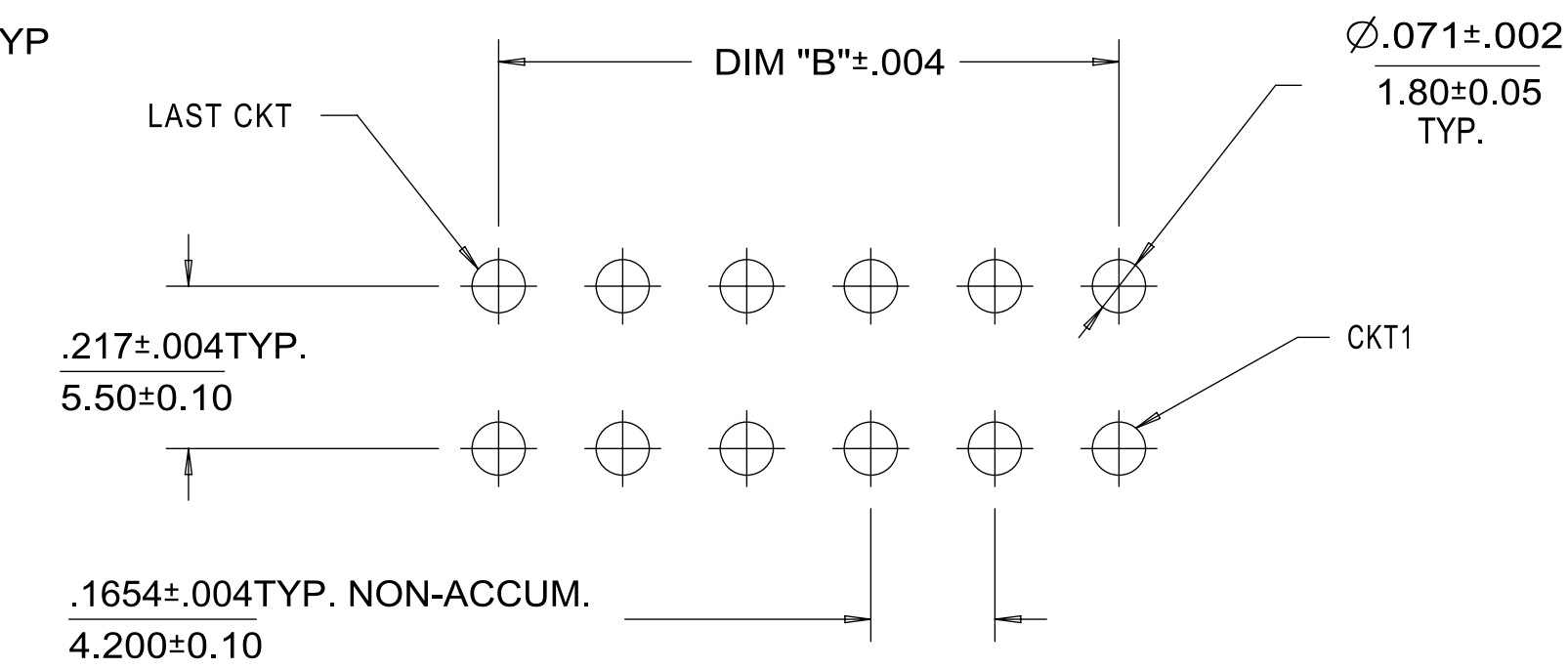
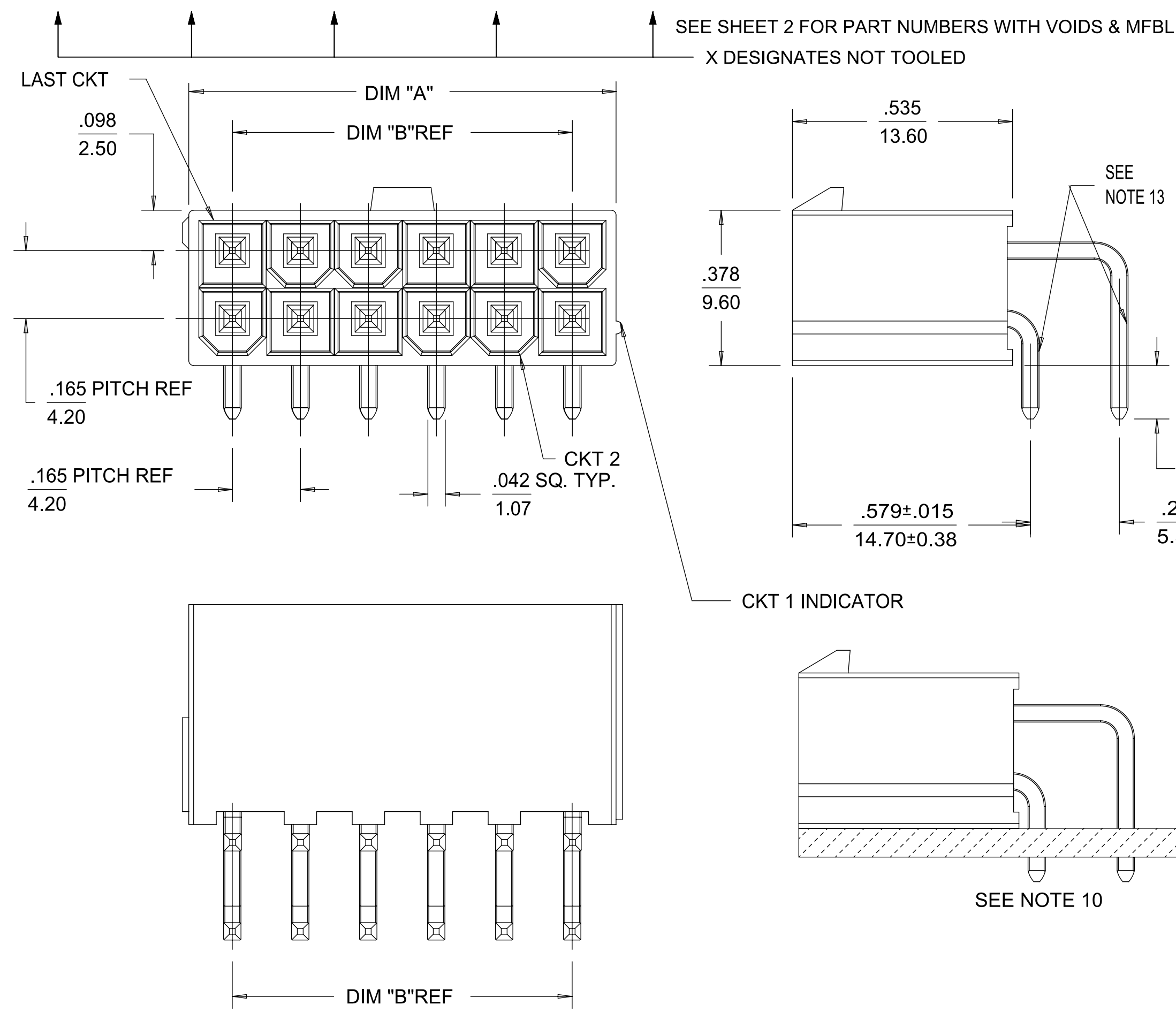


		COLOR = BLACK				COLOR = NATURAL	
		TIN PLATING		GOLD PLATING		TIN PLATING	
CKT SIZE	TRAY PACK MATERIAL NUMBER	TAPE & REEL MATERIAL NUMBER	TRAY PACK MATERIAL NUMBER	TAPE & REEL MATERIAL NUMBER	TRAY PACK MATERIAL NUMBER	DIM "A"	DIM "B"
4	46991-1004	46991-4004	X	46991-2004	46991-3004	.38/9.6	.165/4.20
6	46991-1006	X 46991-4006	X	46991-2006	X 46991-3006	.54/13.8	.331/8.40
8	46991-1008	46991-4008		46991-2008	46991-3008	.71/18.0	.496/12.60
10	46991-1010	46991-4010	X	46991-2010	X 46991-3010	.87/22.2	.661/16.80
12	46991-1012	X 46991-4012		46991-2012	X 46991-3012	1.04/26.4	.827/21.00
14	X 46991-1014	X 46991-4014	X	46991-2014	X 46991-3014	1.21/30.6	.992/25.20
16	X 46991-1016	X 46991-4016	X	46991-2016	X 46991-3016	1.37/34.8	1.160/29.40
18	X 46991-1018	X 46991-4018	X	46991-2018	X 46991-3018	1.54/39.0	1.323/33.60
20	X 46991-1020	X 46991-4020	X	46991-2020	X 46991-3020	1.70/43.2	1.488/37.80
22	X 46991-1022	X 46991-4022	X	46991-2022	X 46991-3022	1.87/47.4	1.654/42.00
24	46991-1024	46991-4024	X	46991-2024	X 46991-3024	2.03/51.6	1.819/46.20

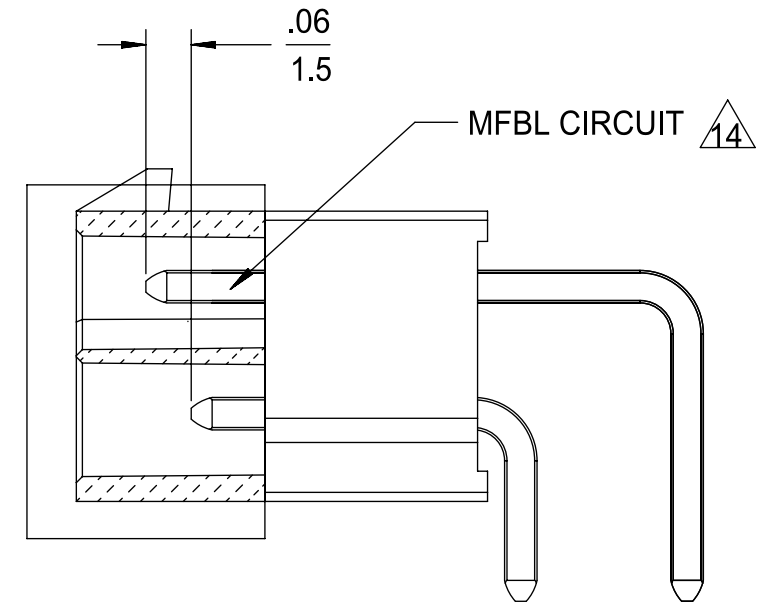
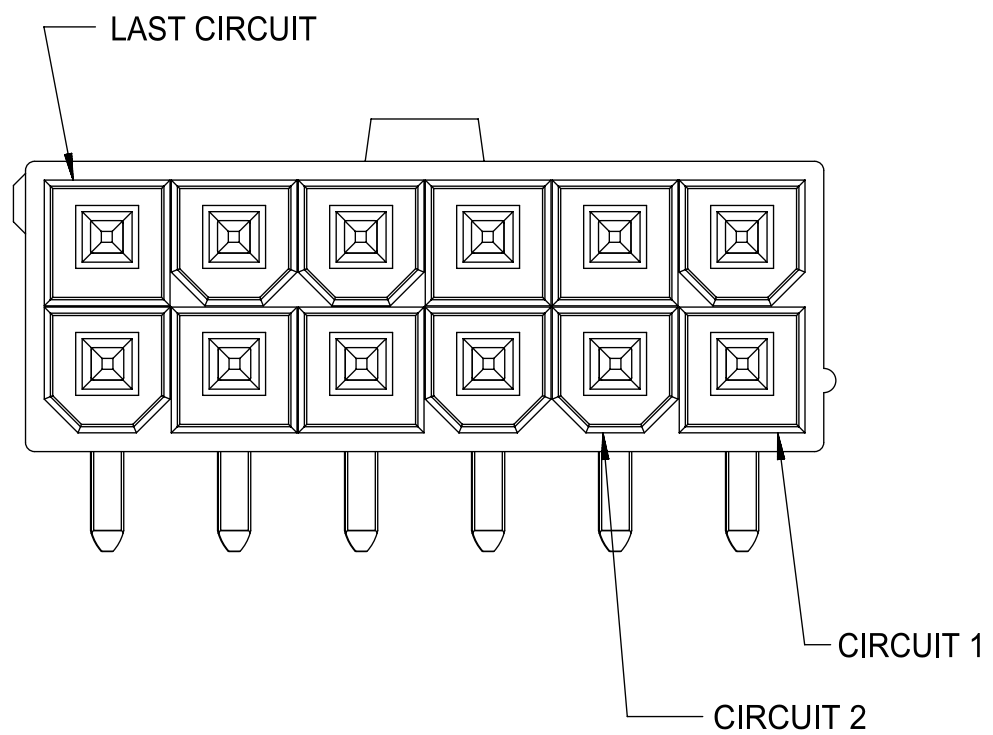
- NOTES:
- MATERIAL:
HOUSING - LIQUID CRYSTAL POLYMER (LCP), COLOR: SEE CHART.
TERMINAL - BRASS
 - TERMINAL PLATING: TIN = .000100/0.00254 MATTE TIN OVER
.000050/0.00127 NICKEL OVERALL
GOLD= .000030/0.00076 MIN. SELECT GOLD OVER
.000100/0.00254 MIN. SELECT MATTE TIN OVER
.000050/0.00127 MIN NICKEL OVERALL
 - PRODUCT SPECIFICATION: PS-5556-001 OR PS-45750-001.
 - PACKAGING SPECIFICATION: TRAY PACKED PER PK-5569-003 OR
TAPE AND REEL PACKAGED PER PK-46991-001.
 - PART MATES WITH MINIFIT JR RECEPTACLE SERIES 5557
 - DISCOLORIZATION IN THE BANDOLIER CARRIER AREA OF THE PIN IS
INHERENT TO THE PLATING PROCESS AND IS DUE TO THE MASKING EFFECT
OF THE CARRIER. THIS DISCOLORIZATION IS A NON-FUNCTIONAL AREA OF
THE PIN AND WILL NOT AFFECT THE PERFORMANCE OF THE HEADER ASSEMBLY.
 - CONNECTORS ARE NOT TO BE MATED OR UNMATED WHILE CIRCUITS ARE LIVE.
 - PARTS ARE NOT DESIGNED FOR CURRENT SHARING.
 - PART IS INTENDED FOR PIN IN PASTE REFLOW SOLDER ONLY.
 - TO AVOID INTERFERENCE BETWEEN THE RECEPTACLE AND PCB. HEADER MUST
BE PLACED AT THE EDGE OF PCB AS SHOWN.
 - PIN RETENTION IN HOUSING IS 2.2 LBS/1 KG MIN. BOTH
DIRECTIONS FOR TIN PLATING.
PIN RETENTION IN HOUSING IS 1.0 LBS/0.45 KG MIN. BOTH
DIRECTIONS FOR GOLD PLATING.
 - THIS PART CONFORMS TO CLASS B REQUIREMENTS OF COSMETIC
SPECIFICATION PS-45499-002.
 - FORMING MARKS ON PINS ARE ACCEPTABLE.
 - CIRCUITS SHOWN PROVIDE THE MATE-FIRST/BREAK-LAST FEATURE.
SEE CHART ON SHEET 2 FOR SPECIFIC CIRCUIT LOCATIONS.
 - TEXT ON PART IS FOR REFERENCE ONLY. TEXT AND TEXT LOCATION MAY VARY DEPENDING ON
PART NUMBER AND/OR TOOL.



SYMBOLS DIMENSION UNITS SCALE CURRENT REV/DESC: ADD 46991-5003	THIS DRAWING CONTAINS INFORMATION THAT IS PROPRIETARY TO MOLEX ELECTRONIC TECHNOLOGIES, LLC AND SHOULD NOT BE USED WITHOUT WRITTEN PERMISSION	molex				
	IN/MM 4:1			GENERAL TOLERANCES (UNLESS SPECIFIED)		
	EC NO: 641577 DRWN: LSCHWALLER 2020/07/15 CHK'D: DSTEIER 2020/07/22 APPR: FSMITH 2020/08/07	PRODUCT CUSTOMER DRAWING	DOCUMENT NUMBER SD-46991-001	DOC TYPE PSD	DOC PART 000	REVISION C11
	INITIAL REVISION: DRWN: JKLOSTERMEIE 2008/12/19 APPR: FSMITH 2008/12/15	PRODUCT CUSTOMER DRAWING	MATERIAL NUMBER SEE CHART	CUSTOMER GENERAL MARKET	SHEET NUMBER 1 OF 2	

MATERIAL NUMBER	NO OF CKT	HOUSING COLOR (REF)	PKG	PLATING SEE NOTE #2	PIN IDENTIFICATION CODE / CIRCUIT LOCATION (SEE CHART BELOW) V = VOID																							
					CKT 1	CKT 2	CKT 3	CKT 4	CKT 5	CKT 6	CKT 7	CKT 8	CKT 9	CKT 10	CKT 11	CKT 12	CKT 13	CKT 14	CKT 15	CKT 16	CKT 17	CKT 18	CKT 19	CKT 20	CKT 21	CKT 22	CKT 23	CKT 24
46991-5001	06	BLACK	TRAY	TIN	2	V	2	2	V	2																		
46991-5002	04	BLACK	TRAY	TIN	1	2	1	1																				
46991-5003	04	BLACK	TRAY	TIN	2	1	2	2																				

PIN ID	MATING CONFIGURATION
1	MATE FIRST/BREAK LAST (LONGER)
2	STANDARD MATING



CKT SIZE	DIM "A"	DIM "B"
4	.38/9.6	.165/4.20
6	.54/13.8	.331/8.40
8	.71/18.0	.496/12.60
10	.87/22.2	.661/16.80
12	1.04/26.4	.827/21.00
14	1.21/30.6	.992/25.20
16	1.37/34.8	1.160/29.40
18	1.54/39.0	1.323/33.60
20	1.70/43.2	1.488/37.80
22	1.87/47.4	1.654/42.00
24	2.03/51.6	1.819/46.20

SYMBOLS DIMENSION UNITS: IN/MM SCALE: 4:1 GENERAL TOLERANCES (UNLESS SPECIFIED) <table border="1"> <tr><th></th><th>MM</th><th>INCH</th></tr> <tr><td>4 PLACES</td><td>±</td><td>±</td></tr> <tr><td>3 PLACES</td><td>±</td><td>± 0.15</td></tr> <tr><td>2 PLACES</td><td>± 0.25</td><td>± 0.1</td></tr> <tr><td>1 PLACE</td><td>± 0.38</td><td>±</td></tr> <tr><td>0 PLACES</td><td>±</td><td>±</td></tr> <tr><td>ANGULAR TOL</td><td>± 0.5 °</td><td></td></tr> </table>		MM	INCH	4 PLACES	±	±	3 PLACES	±	± 0.15	2 PLACES	± 0.25	± 0.1	1 PLACE	± 0.38	±	0 PLACES	±	±	ANGULAR TOL	± 0.5 °		THIS DRAWING CONTAINS INFORMATION THAT IS PROPRIETARY TO MOLEX ELECTRONIC TECHNOLOGIES, LLC AND SHOULD NOT BE USED WITHOUT WRITTEN PERMISSION CURRENT REV / DESC: ADD 46991-5003					
		MM	INCH																								
4 PLACES	±	±																									
3 PLACES	±	± 0.15																									
2 PLACES	± 0.25	± 0.1																									
1 PLACE	± 0.38	±																									
0 PLACES	±	±																									
ANGULAR TOL	± 0.5 °																										
<table border="1"> <tr><td>▽ = 0</td><td>▽ = 0</td><td>▽ = 0</td></tr> <tr><td>▽ = 0</td><td>▽ = 0</td><td>▽ = 0</td></tr> <tr><td>▽ = 0</td><td>▽ = 0</td><td>▽ = 0</td></tr> <tr><td>▽ = 0</td><td>▽ = 0</td><td>▽ = 0</td></tr> <tr><td>▽ = 0</td><td>▽ = 0</td><td>▽ = 0</td></tr> <tr><td>▽ = 0</td><td>▽ = 0</td><td>▽ = 0</td></tr> <tr><td>▽ = 0</td><td>▽ = 0</td><td>▽ = 0</td></tr> <tr><td>▽ = 0</td><td>▽ = 0</td><td>▽ = 0</td></tr> </table>	▽ = 0	▽ = 0	▽ = 0	▽ = 0	▽ = 0	▽ = 0	▽ = 0	▽ = 0	▽ = 0	▽ = 0	▽ = 0	▽ = 0	▽ = 0	▽ = 0	▽ = 0	▽ = 0	▽ = 0	▽ = 0	▽ = 0	▽ = 0	▽ = 0	▽ = 0	▽ = 0	▽ = 0	EC NO: 641577 DRWN: LSCHWALLER 2020/07/15 CHK'D: DSTEIER 2020/07/22 APPR: FSMITH 2020/08/07 INITIAL REVISION: DRWN: JKLOSTERMEIE 2008/12/19 APPR: FSMITH 2008/12/15		PRODUCT CUSTOMER DRAWING DOCUMENT NUMBER: SD-46991-001 DOC TYPE: PSD DOC PART: 000 REVISION: C11
▽ = 0	▽ = 0	▽ = 0																									
▽ = 0	▽ = 0	▽ = 0																									
▽ = 0	▽ = 0	▽ = 0																									
▽ = 0	▽ = 0	▽ = 0																									
▽ = 0	▽ = 0	▽ = 0																									
▽ = 0	▽ = 0	▽ = 0																									
▽ = 0	▽ = 0	▽ = 0																									
▽ = 0	▽ = 0	▽ = 0																									
DRAFT WHERE APPLICABLE MUST REMAIN WITHIN DIMENSIONS THIRD ANGLE PROJECTION DRAWING: C-SIZE SERIES: 46991	MATERIAL NUMBER: SEE CHART CUSTOMER: GENERAL MARKET SHEET NUMBER: 2 OF 2																										