

BTH-XXX-XX-X-D-EMX

EDGE MOUNT THICKNESS	"A"	"B"	"C"	BODY	CONTACT
-EM2	.130[3.30]	.0670[1.702]	.058[1.47]	BTH-XXX-01-D-EM2	T-1S42-01-X
* -EM3	.160[4.06]	.0980[2.489]	.088[2.24]	BTH-XXX-01-D-EM3	T-1S42-02-X

No OF POSITIONS
 -030, -050, -060, -090,
 *-120, *-150
 (PER ROW)

EDGE MOUNT THICKNESS
 -EM2: .062[1.57] PCB
 (USE BTH-XXX-01-D-EM2 &
 T-1S42-01-X)

**SEE NOTE 11

* -EM3:
 (USE BTH-XXX-01-D-EM3 &
 T-1S42-02-X)

SEE NOTE 10

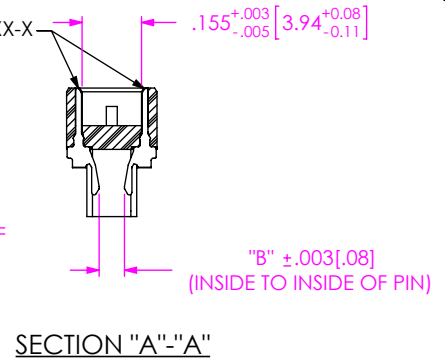
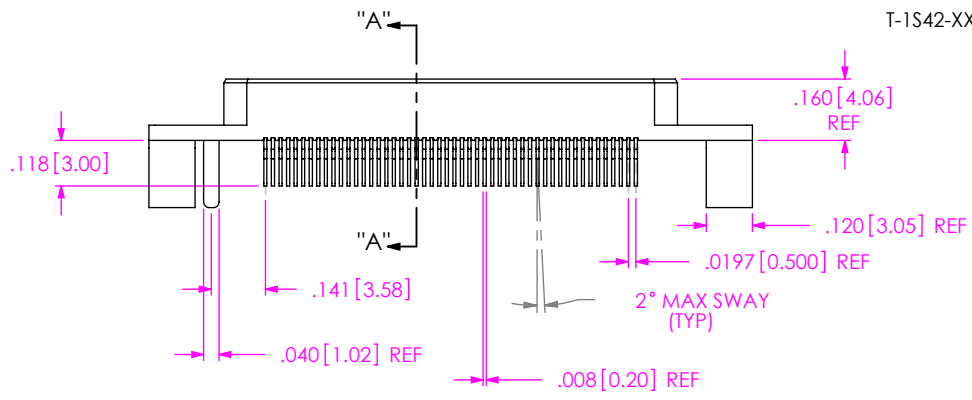
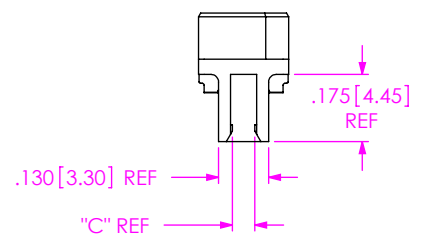
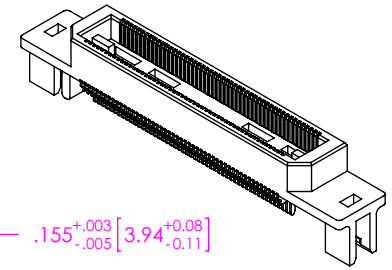
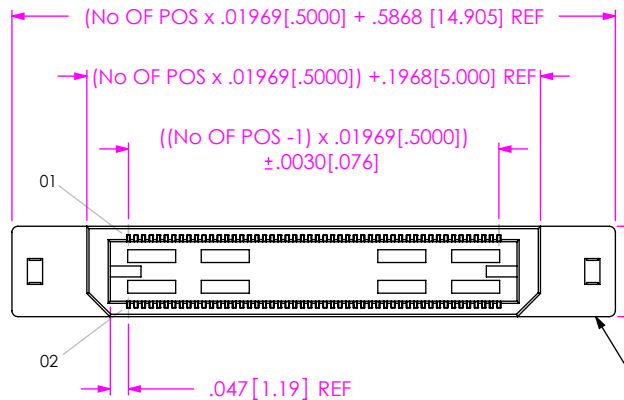
LEAD STYLE
 -01

PLATING SPECIFICATION
 -F: FLASH SELECTIVE GOLD WITH
 MATTE TIN TAILS
 (USE T-1S42-XX-F) [SEE NOTE 6]
 -L: LIGHT SELECTIVE GOLD WITH
 MATTE TIN TAILS
 (USE T-1S42-XX-L)
 -H: HEAVY GOLD
 (USE T-1S42-XX-H)

ROW SPECIFICATION
 -D: DOUBLE
 (USE BTH-XXX-01-D-EMX)

* = NOT RELEASED FOR PRODUCTION
 SEE NOTE 10

DO NOT
 SCALE FROM
 THIS PRINT



- NOTES:
- ⊕ REPRESENTS A CRITICAL DIMENSION.
 - BURR ALLOWANCE: .0015 MAX.
 - MINIMUM PUSHOUT FORCE: 5 OZ.
 - MAXIMUM ALLOWABLE BOW: SEE TABLE 2.
 - PARTS TO BE MOLDED TO POSITION.
 - L PLATING CAN BE SUBSTITUTED FOR -F PLATING.
 - NOTE DELETED.
 - BOARD THICKNESS TO BE MEASURED FROM SOLDER PAD TO SOLDER PAD.
 - SEE TEK TALK GUIDE FOR PROCESSING EDGE MOUNT PARTS TO BOARD.
 - EM3 IS NOT A STANDARD OFFERING; AVAILABLE AS AN ASP ONLY. PLEASE CONTACT SAMTEC INTERCONNECT PROCESSING GROUP WITH ORDER INQUIRIES
 - FOR NEW APPLICATIONS REQUIRING THESE POSITIONS, PLEASE CONTACT SAMTEC INTERCONNECT PROCESSING GROUP.
 - ORDERS WILL BE PACKAGED ACCORDING TO THE SAMTEC PACKAGING EFFICIENCY STANDARDS (SPES) FOUND ON WWW.SAMTEC.COM.

PACKAGING VIEW
 (PARTS TO HAVE POSITION #1 LOADED IN SAME DIRECTION AS ARROW ON TUBE)

TUBE: PT-1-24-01-95
 PLUG: TP-03

No OF POSITIONS	TOP/BOTTOM	SIDE/SIDE
-030, -060, -090	.003 [.08]	.003 [.08]
-120, -150	.004 [.10]	.003 [.08]

UNLESS OTHERWISE SPECIFIED, DIMENSIONS ARE IN INCHES. TOLERANCES ARE:
 DECIMALS .XX: ±.01 [.3]
 .XXX: ±.005 [.13]
 .XXXX: ±.0020 [.051]

PROPRIETARY NOTE
 THIS DOCUMENT CONTAINS INFORMATION CONFIDENTIAL AND PROPRIETARY TO SAMTEC, INC. AND SHALL NOT BE REPRODUCED OR TRANSFERRED TO OTHER DOCUMENTS OR DISCLOSED TO OTHERS OR USED FOR ANY PURPOSE OTHER THAN THAT WHICH IT WAS OBTAINED WITHOUT THE EXPRESSED WRITTEN CONSENT OF SAMTEC, INC.



MATERIAL: DO NOT SCALE DRAWING SHEET SCALE: 2:1
 INSULATOR: LCP, COLOR: BLACK
 TERMINAL: PHOS BRONZE

DESCRIPTION:
 .5mm TERMINAL ASSEMBLY, EDGE MOUNT
 DWG. NO. **BTH-XXX-XX-X-D-EMX**