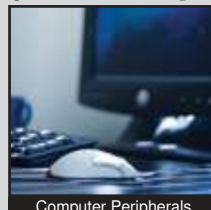
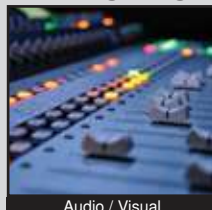


# TL3253 SERIES TACT SWITCH

ANTI-VANDAL SWITCHES  
 DETECTOR SWITCHES  
 DIP SWITCHES  
 KEYLOCK SWITCHES  
 NAVIGATION SWITCHES  
 PUSHBUTTON SWITCHES  
 ROCKER SWITCHES  
 ROTARY SWITCHES  
 SLIDE SWITCHES  
 SNAP ACTION SWITCHES  
**TACTILE SWITCHES**  
 TOGGLE SWITCHES  
 CAP OPTIONS



## APPLICATIONS / MARKETS



**RoHS**

## SPECIFICATIONS

**Electrical Rating:** 50mA @ 12V DC  
**Life Expectancy:** 500,000 Cycles  
**Contact Resistance:** 100mΩ Max.  
**Insulation Resistance:** 100 MΩ Min. at 100V DC  
**Dielectric Strength:** 250V AC for 1 min.  
**Operating Temperature:** -20°C to 70°C  
**Storage Temperature:** -30°C to 80°C  
**Operating Force:** 160 gf  
**Travel:** 0.25mm  
**Contact Arrangement:** SPST, Normally Open

## FEATURES & BENEFITS

- Illumination options
- Dual stacked LEDs
- Right angle mount

## PART NUMBER CONFIGURATOR

Series	Model	Upper Actuator Height	Upper Actuator LED	Upper Actuator Cap	Lower Actuator Height	Lower Actuator LED	Lower Actuator Cap	Operating Force	Contact Material
TL	3253	A - 6.60mm B - 8.55mm	Y - Yellow R - Red G - Green B - Blue W - White N - No LED	A - Stepped Transparent B - Round Transparent N - No Cap	A - 6.60mm B - 8.55mm	Y - Yellow R - Red G - Green B - Blue W - White N - No LED	A - Stepped Transparent B - Round Transparent N - No Cap	F160	Q - Silver

*Specifications subject to change without notice*



**E-SWITCH®**

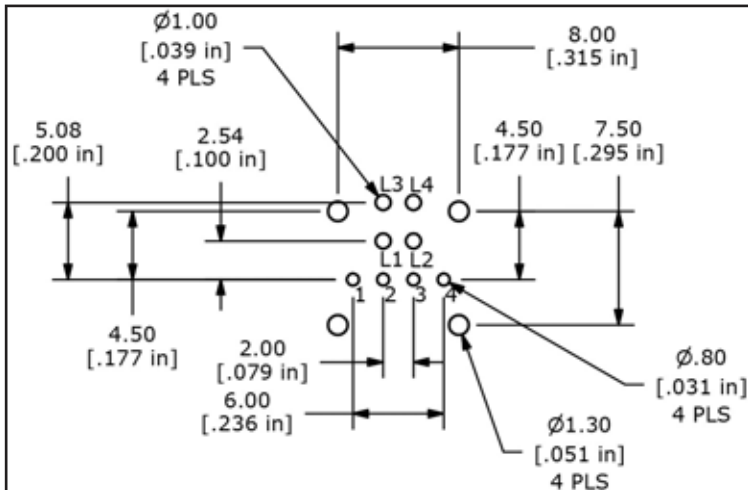
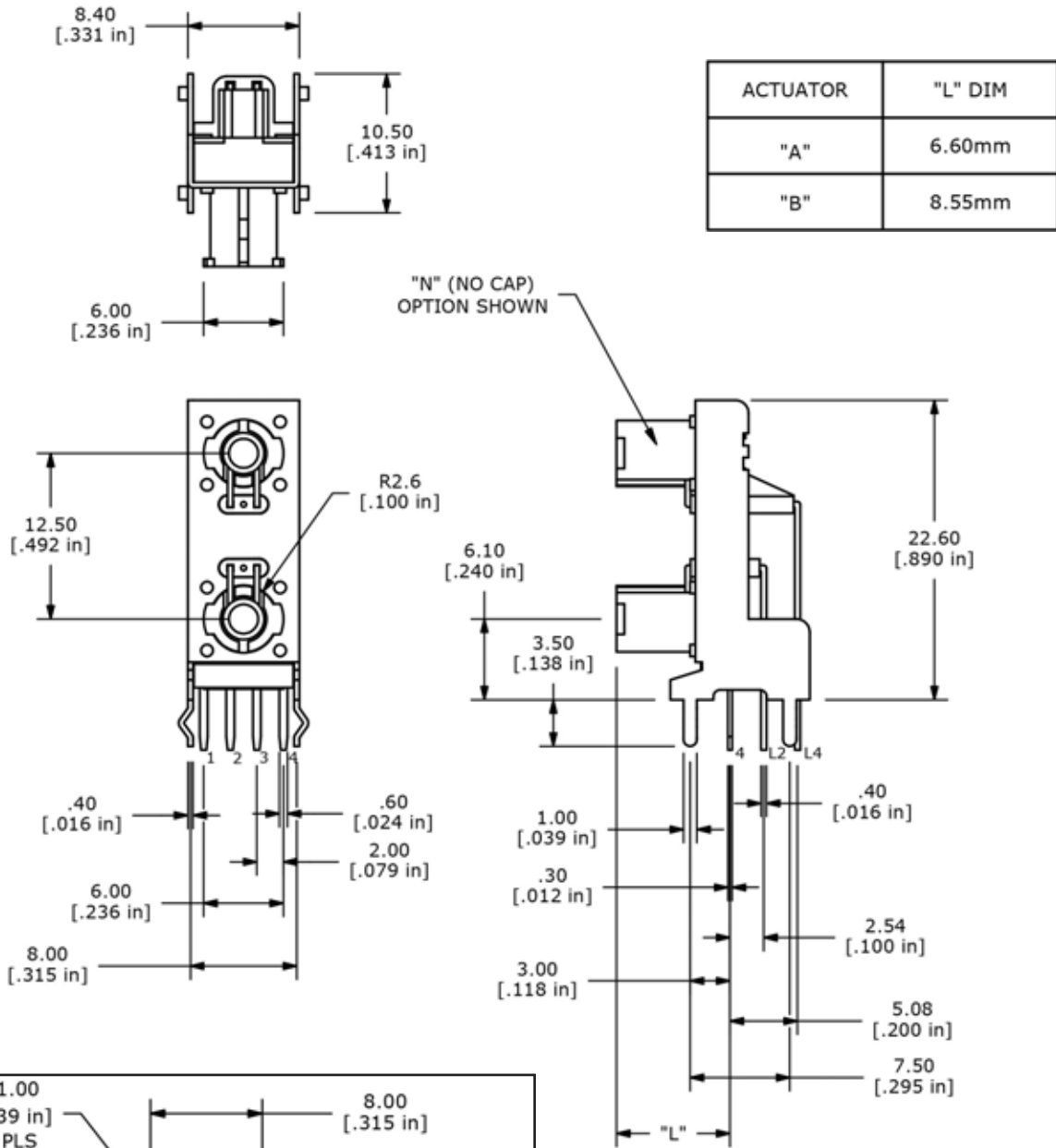
www.e-switch.com

800.867.2717

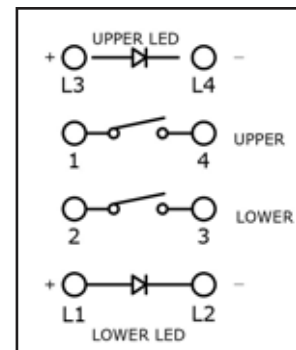
2

# TL3253 SERIES TACT SWITCH

## BODY DIMENSIONS



PCB LAYOUT



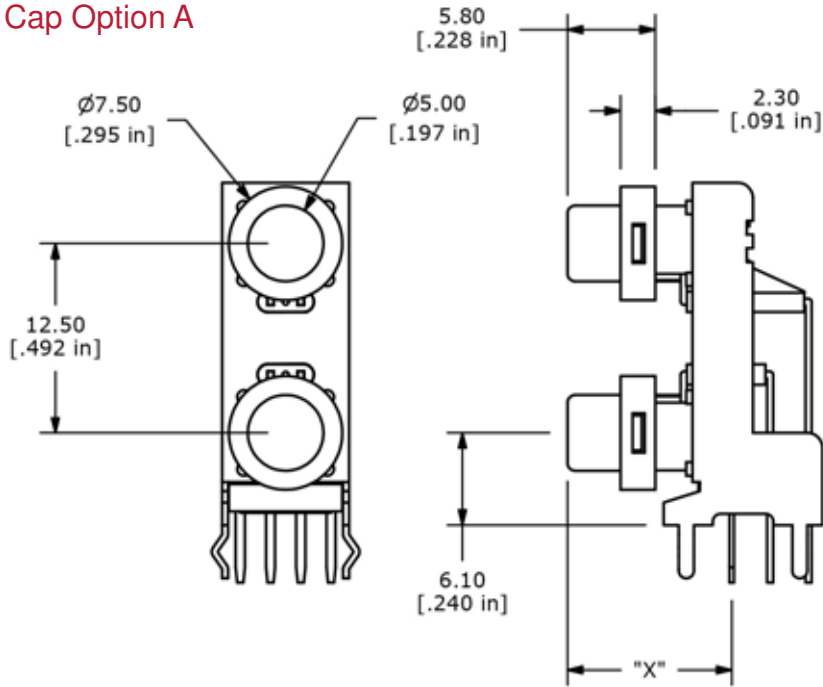
SCHEMATIC



# TL3253 SERIES TACT SWITCH

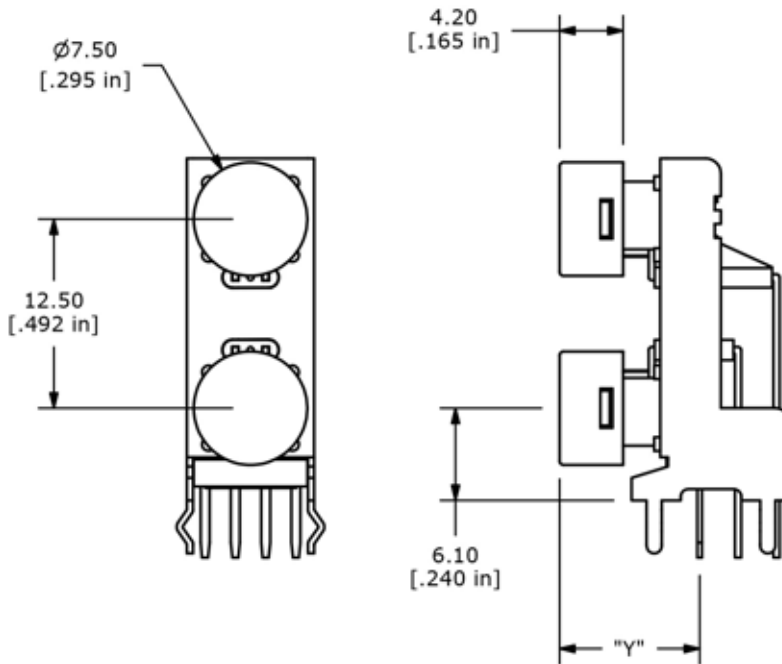
## CAP OPTIONS

### Cap Option A



ACTUATOR	"X" DIM
"A"	10.85mm
"B"	12.80mm

### Cap Option B



ACTUATOR	"L" DIM
"A"	9.25mm
"B"	11.2mm

