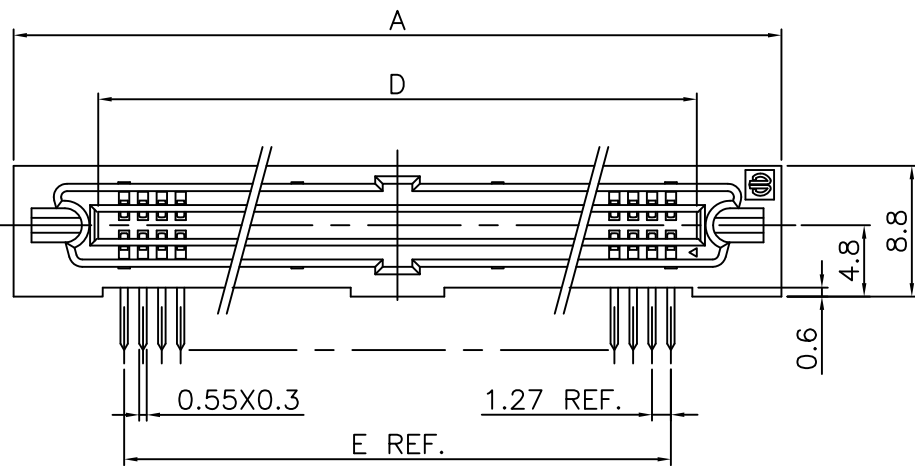
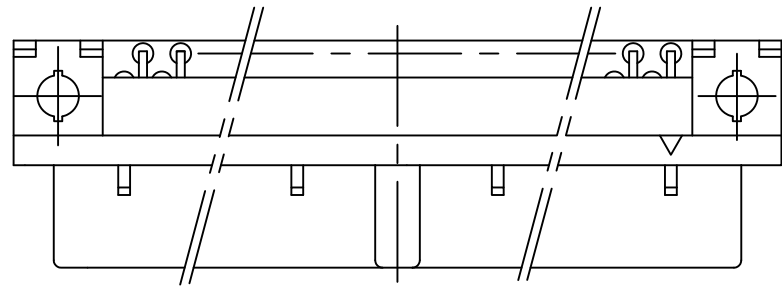
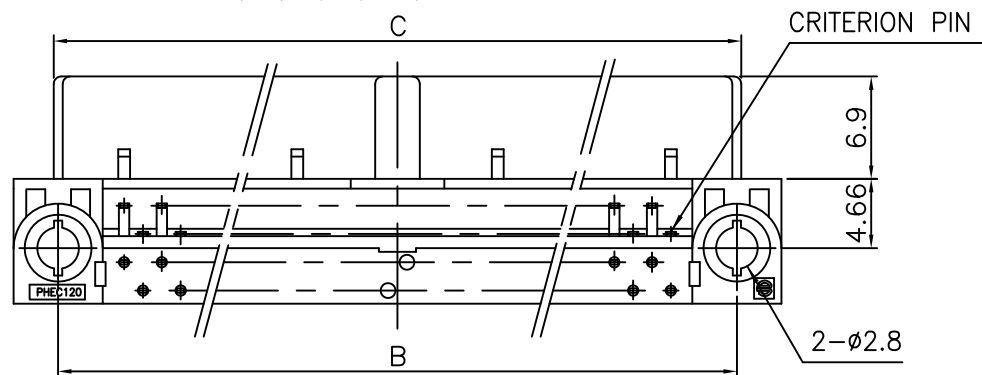


PRODUCT NO.

JSC 96359

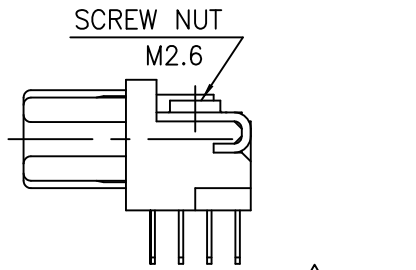


NO. OF CONTACTS:40,60,68,80,100,120

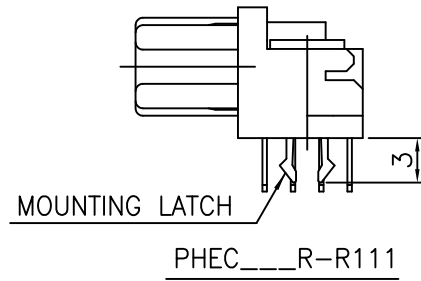


NOTES

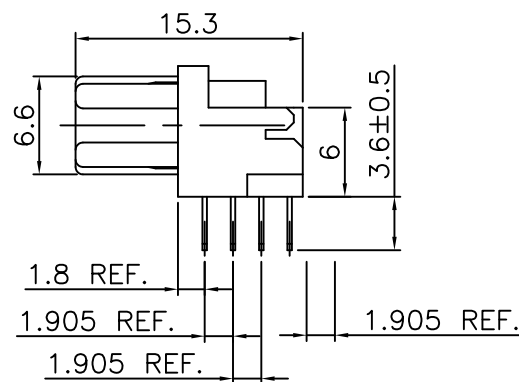
- BODY, LOCATOR MATERIAL : PBT GLASS FILLED (UL94V-0), COLOR BLACK
- TERMINAL MATERIAL : PHOSPHOR BRONZE
- MOUNTING LATCH MATERIAL : PHOSPHOR BRONZE
- SCREW NUT : STEEL
- TERMINAL FINISH
CONTACT AREA : GOLD FLASH 0.1μm min. OVER NICKEL UNDERLAYER
SOLDER TAILS : PURE Sn 2μm min. OVER NICKEL UNDERLAYER
- MOUNTING LATCH FINISH : PURE Sn 2μm min. OVER NICKEL UNDERLAYER
- SCREW NUT FINISH : NICKEL
- THIS PRODUCT MEETS EUROPEAN UNION DIRECTIVES AND OTHER COUNTRY REGULATIONS AS DESCRIBED IN GS-22-008
- THE HOUSING WILL WITHSTAND EXPOSURE TO 260 DEGREE PEAK TEMPERATURE FOR 10 SECONDS IN A WAVE SOLDER APPLICATION WITH A 1.6mm MINIMUM THICK CIRCUIT BOARD.



SCREW NUT M2.6
PHEC__R-R112 Obsolete

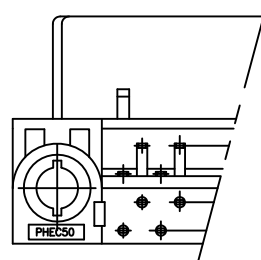


MOUNTING LATCH
PHEC__R-R111



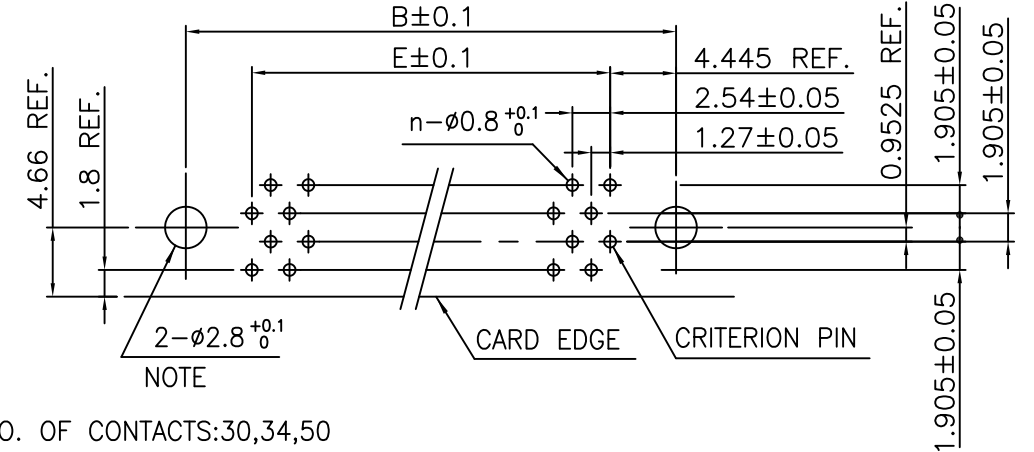
PHEC__R-R110

NO. OF CONTACTS:30,34,50

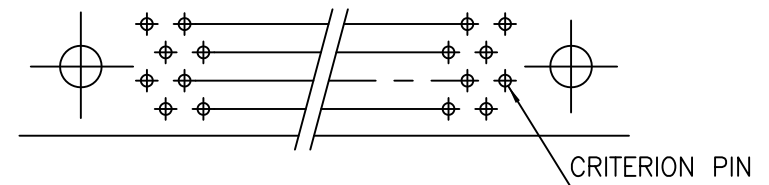


RECOMMENDED PC BOARD
THICKNESS:1.6 ±0.2
HOLE PATTERN (COMPONENT SIDE)

NO. OF CONTACTS:40,60,68,80,100,120 (n:NO. OF CONTACTS)



NO. OF CONTACTS:30,34,50



NOTE : THROUGH-HOLES FOR MOUNTING LATCHES ALSO SHOULD BE PLATED.

| CAT. NO. | NO. OF CONTACTS (MATING SIDE) | DIMENSIONS | | | | |
|-----------------|-------------------------------|------------|-------|-------|-------|-------|
| | | A | B | C | D | E |
| PHEC30R-R11_LF | 15/ROW X 2 ROWS | 32.67 | 26.67 | 27.26 | 21.26 | 17.78 |
| PHEC34R-R11_LF | 17/ROW X 2 ROWS | 35.21 | 29.21 | 29.80 | 23.80 | 20.32 |
| PHEC40R-R11_LF | 20/ROW X 2 ROWS | 39.02 | 33.02 | 33.61 | 27.61 | 24.13 |
| PHEC50R-R11_LF | 25/ROW X 2 ROWS | 45.37 | 39.37 | 39.96 | 33.96 | 30.48 |
| PHEC60R-R11_LF | 30/ROW X 2 ROWS | 51.72 | 45.72 | 46.31 | 40.31 | 36.83 |
| PHEC68R-R11_LF | 34/ROW X 2 ROWS | 56.80 | 50.80 | 51.39 | 45.39 | 41.91 |
| PHEC80R-R11_LF | 40/ROW X 2 ROWS | 64.42 | 58.42 | 59.01 | 53.01 | 49.53 |
| PHEC100R-R11_LF | 50/ROW X 2 ROWS | 77.12 | 71.12 | 71.71 | 65.71 | 62.23 |
| PHEC120R-R11_LF | 60/ROW X 2 ROWS | 89.82 | 83.82 | 84.41 | 78.41 | 74.93 |

| | | | | | | | | | | | |
|-------------|--|----------------|--|-------------|--|------------|--|----------------|--|------------------------------|--|
| mat'l. code | | surface | | tolerance | | projection | | product family | | CODE | |
| --- | | ISO 1302 | | ISO 406 | | MM | | PHEC | | JP | |
| ltr | | description | | ecn no | | dr | | date | | title | |
| A | | RELEASED | | J05-0186 | | S.O | | 3/29/'05 | | PRINTED CIRCUIT CONNECTOR | |
| B | | REVISED | | J07-0047 | | S.O | | 1/25/'07 | | (CAT.NO.PHEC _ _ _ R-R11_LF) | |
| C | | REVISED | | J07-0458 | | S.O | | 9/11/'07 | | dwg no | |
| D | | EOL of R112LF | | ELX-J-17067 | | S.W | | 2/27/'14 | | sheet 1 of 1 size | |
| | | | | | | dr | | S.Watanabe | | 2/27/'14 | |
| | | | | | | enr | | S.Watanabe | | 2/27/'14 | |
| | | | | | | chr | | K.Ito | | 2/27/'14 | |
| | | | | | | appd | | Y.Kameda | | 2/27/'14 | |
| sheet index | | revision sheet | | D | | 1 | | | | Rev. D | |