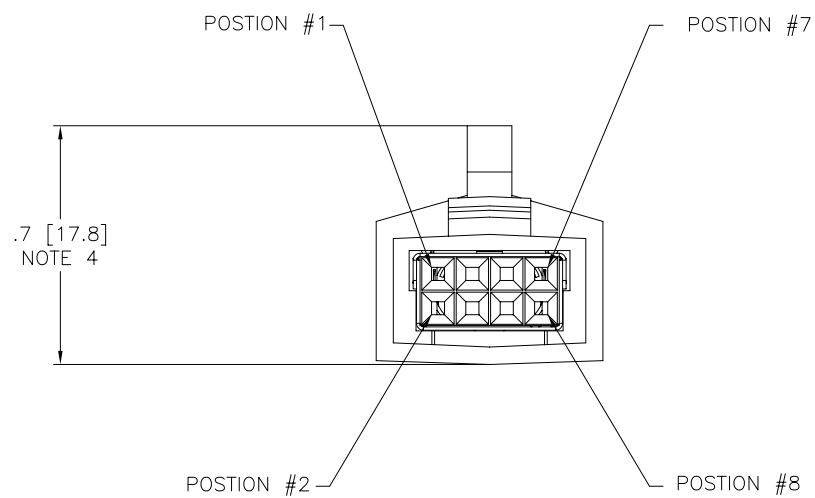
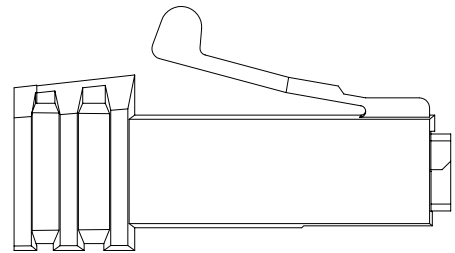
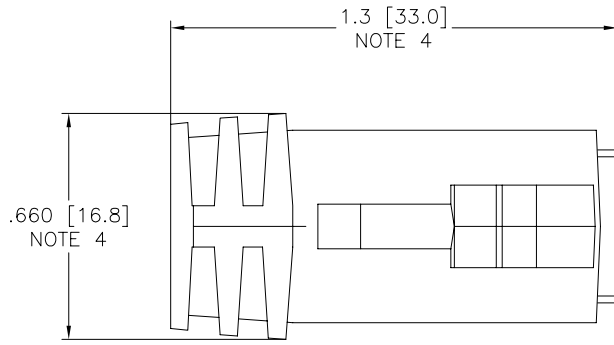


PRODUCT NO.
SEE SHT. 2



FCIconnect.com

Copyright FCI

mat'l. code				surface ISO 1302		tolerance ISO 406 ISO 1101		projection 		product family LATCH-N-LOK			
tr				tolerances unless otherwise specified		angles		linear		title			
A	v90622	CGC	3/4/99					.XX±.01/.3		2X4 LNL 360° SHIELDED PLUG CONN. KIT W/O PV'S			
B	v91818	RGD	8/12/99					.xxx±.005/.13		INCH/MM			
C	v92065	RGD	11/2/99	0°±2'				.xxxx±.0020/.051		scale 2:1			
D	v01093	TFG	7/6/00	dr	M.HERNANDEZ	12/03/04				dwg no sheet 1 of 3 size			
E	M04-0229	MHT	12/03/04	enr	M. BARRIOS	12/03/04				98028 A3			
F	M06-0365	AGS	9/21/06	chr	M. BARRIOS	12/03/04				type Product Customer Drawing			
sheet				revision		F	F	F					
index				sheet		1	2	3					

form: A3

98028-WXYZLF

Z key position

1	POSITION 1
2	POSITION 2
3	NO KEY

XY color

01	LT. GRAY	---	---	---	obs
02	OFF WHITE				
03	DK. GRAY	---	---	---	obs
04	BLACK				
05	SLATE GRAY	---	---	---	obs
06	D. GRAY	---	---	---	obs
07	SILVER GRAY				
08	PEARL WHITE	---	---	---	obs
09	PEBBLE GRAY				

W cable o.d.

7	.250/6.35
8	.280/7.11

EXAMPLE

98028-7013LF: IS A 2X4 REAR EXIT PLUG IN LIGHT GRAY WITH A CABLE EXIT HOLE SIZE OF .250[6.35] CABLE RANGE, WITH NO KEYING OPTION.



Copyright FCI

mat'l. code		surface ISO 1302 <input checked="" type="checkbox"/>		tolerance ISO 406 ISO 1101		projection 		product family LATCH-N-LOK	
ltr	ecn	no	dr	date		tolerances unless otherwise specified		title	
F						angles	.XX±.01/.3	2X4 LNL 360° SHIELDED PLUG CONN. KIT W/O PV'S	
						linear	.xxx±.005/.13	INCH/MM	
						0'±2'	.xxx±.0020/.051	scale 2:1	
			dr	M.HERNANDEZ 12/03/04				dwg no	
			enfr	M. BARRIOS 12/03/04				sheet 2 of 3 size	
			chr	M. BARRIOS 12/03/04				98028 A3	
			appd	M. BARRIOS 12/03/04				type Product Customer Drawing	
sheet index	revision sheet								

1

2 3

4

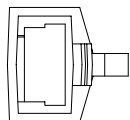
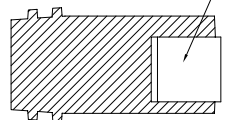
5

6

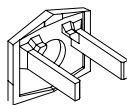
VIEWS OF BOTTOM OF PLUG

KEY POSITION 1

SHIELD CAN



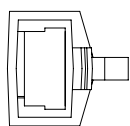
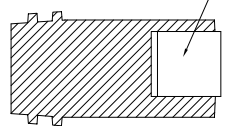
REAR CAP



MATES WITH P/N 74355-XXX1
MATES WITH P/N 87316-XXX1

KEY POSITION 2

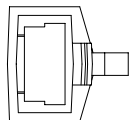
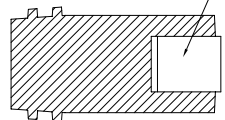
SHIELD CAN



MATES WITH P/N 74355-XXX2
MATES WITH P/N 87316-XXX2

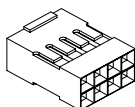
NO KEY

SHIELD CAN

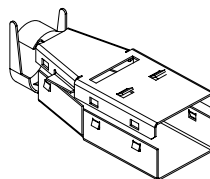


MATES WITH P/N 74355-XXX
MATES WITH P/N 87316-XXX

MINI LATCH HOUSING

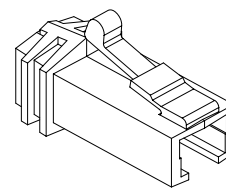


TOP SHIELD



BOTTOM SHIELD

PLUG FRONT



NOTES:

- EACH KIT CONTAINS ONE OF EACH OF THE FOLLOWING COMPONENTS
LATCH -N- LOK PLUG
LATCH -N- LOK END CAP
MINI LATCH HOUSING
360° SHIELD CANS.
- COMPONENTS ARE BULK PACKAGED WITH 100 pcs. OF A COMPONENT PER BAG. PV'S MUST BE ORDERED SEPERATELY.
- MATERIALS USED: PLUGS AND CAPS ARE MOLDED IN POLYCARBONATE. THE MINI LATCH HOUSINGS ARE MOLDED IN NYLON. COLOR IS BLACK. THE SHIELD CAN IS 3/4 HARD BRASS PLATED WITH 2.5um MIN. BRIGHT TIN. 1.0um MIN. NICKEL UNDERPLATE.
- DIMENSIONS ARE APPROXIMATE AND REFLECT PLUG IN UNLATCHED STATE.
- PART NUMBERS WITH LF IN THE END ARE LEAD FREE.
- THIS PRODUCT MEETS EUROPEAN UNION DIRECTIVES AND OTHER COUNTRY REGULATION AS DESCRIBED IN GS-22-008.

mat'l. code		surface ISO 1302 ✓		tolerance ISO 406 ISO 1101		projection ⊕		product family LATCH-N-LOK	
ltr	ecn	no	dr	date		tolerances unless otherwise specified		title	
F						angles	linear	2X4 LNL 360° SHIELDED PLUG CONN. KIT W/O PV'S	
						0°±2'	.XX±.01/.3 .xxx±.005/.13 .xxx±.0020/.051	sheet 3 of 3 size A3	
						dr	M.HERNANDEZ	12/03/04	
						enr	M. BARRIOS	12/03/04	
						chr	M. BARRIOS	12/03/04	
						app	M. BARRIOS	12/03/04	
sheet index		revision sheet						type Product Customer Drawing	



FCJconnect.com

Copyright FCJ