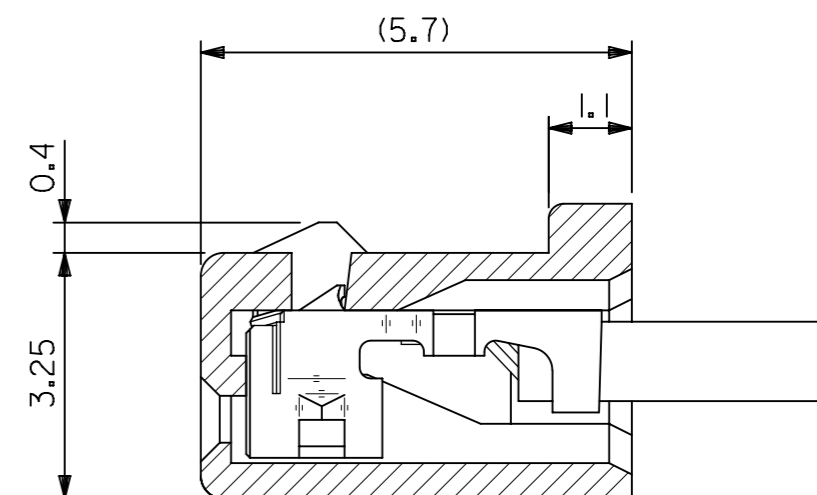
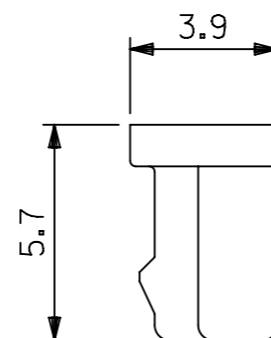
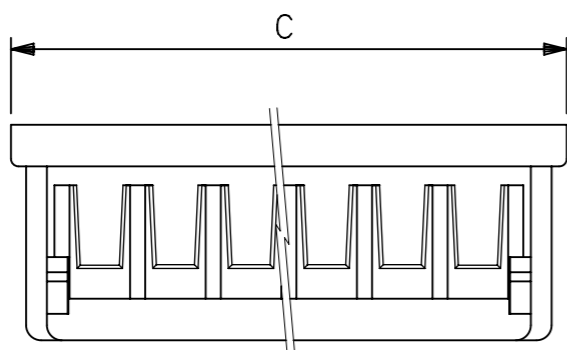
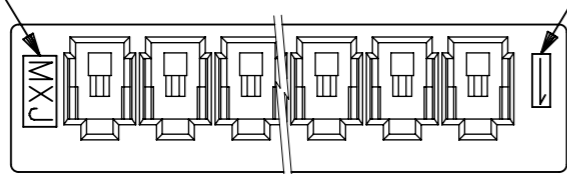
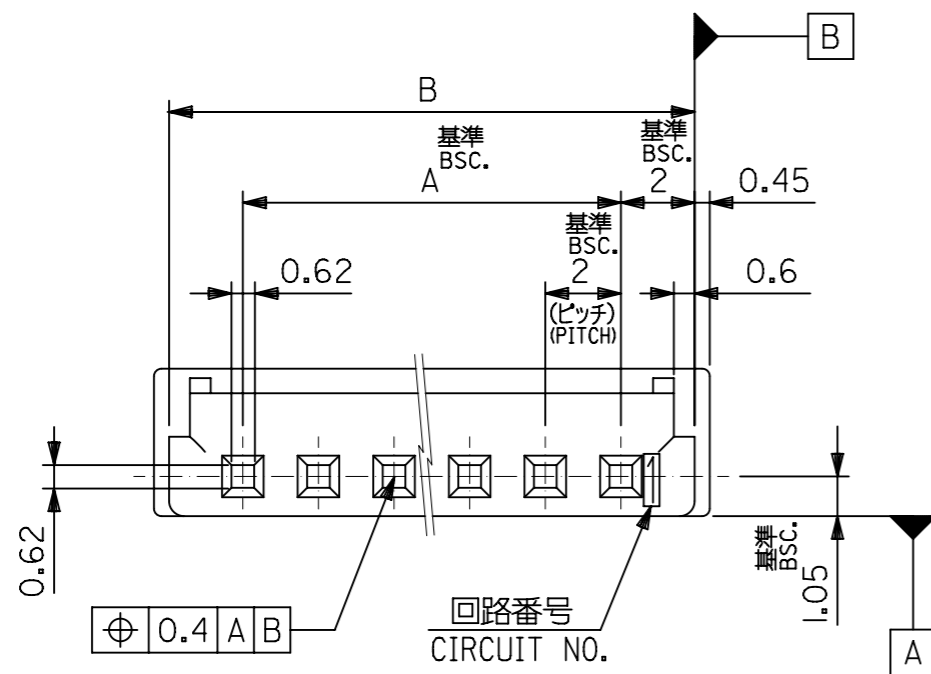


トレードマーク
TRADE MARK.

回路番号
CIRCUIT NO.



ターミナル装着状態図
FIGURE OF TERMINAL WHEN ASSEMBLED



注記 NOTES

- 適合ターミナル: 50212-8*00, 50372-8*00, 59354-8***
APPLICABLE TERMINAL
- 嵌合相手: 53324-***0, 53325-***0, 53358-***0, 501708-0801
MATES WITH
- 材質: PBT, UL94V-0
MATERIAL: PBT, UL94V-0
- ELV 及び RoHS 適合品
ELV AND RoHS COMPLIANT

| | | | | |
|------|----|----|------------|--------|
| 30.9 | 30 | 26 | 51090-1400 | 14 |
| 28.9 | 28 | 24 | -1300 | 13 |
| 26.9 | 26 | 22 | -1200 | 12 |
| 24.9 | 24 | 20 | -1100 | 11 |
| 22.9 | 22 | 18 | -1000 | 10 |
| 20.9 | 20 | 16 | -0900 | 9 |
| 18.9 | 18 | 14 | -0800 | 8 |
| 16.9 | 16 | 12 | -0700 | 7 |
| 14.9 | 14 | 10 | -0600 | 6 |
| 12.9 | 12 | 8 | -0500 | 5 |
| 10.9 | 10 | 6 | -0400 | 4 |
| 8.9 | 8 | 4 | -0300 | 3 |
| 6.9 | 6 | 2 | 51090-0200 | 2 |
| C | B | A | ENG. NO. | 極数CKT. |

GENERAL TOLERANCES (UNLESS SPECIFIED)

| | |
|------------------|-------|
| 10 UNDER | ±0.2 |
| 10 OVER 30 UNDER | ±0.25 |
| 30 OVER | ±3 |

THIS DRAWING CONTAINS INFORMATION THAT IS PROPRIETARY TO MOLEX ELECTRONIC TECHNOLOGIES, LLC AND SHOULD NOT BE USED WITHOUT WRITTEN PERMISSION

SCALE: mm NTS

GENERAL TOLERANCES (UNLESS SPECIFIED)

| | |
|----------|---|
| 4 PLACES | ± |
| 3 PLACES | ± |
| 2 PLACES | ± |
| 1 PLACE | ± |
| 0 PLACES | ± |

ANGULAR TOL ± 3.0°

DRAFT WHERE APPLICABLE MUST REMAIN WITHIN DIMENSIONS

THIRD ANGLE PROJECTION

CURRENT REV DESC: OBSOLETE PART NO

EC NO: 619468
DRWN: RPRABHUM 2019/05/09
CHK'D: GB 2019/06/24
APPR: GGA 2019/06/27

INITIAL REVISION:
DRWN: NITO 2011/12/22
APPR: YOITO 2011/12/26

molex

2.0 W/B CONN REC HSG

PRODUCT CUSTOMER DRAWING

DOCUMENT NUMBER: SD-51090-001
DOC TYPE: PSD
DOC PART: 001
REVISION: D1

MATERIAL NUMBER: SEE CHART
CUSTOMER: GENERAL MARKET
SHEET NUMBER: 1 OF 1