

# ACCESSORIES

## Tie Wraps:TY-8



8 inch plastic Tie Wraps.  
Sold in bags of 100.  
Clear color only.

## Ground Clamp



ZINC with SS bolts  
Brass Option Available  
(Special Order Item)  
Call for Min. Order Qty - Leadtime - Pricing

## Electrical Tape



Durable and Strong  
65' L x 3/4" W  
Available: White or Black  
Sold in sleeves of 10

## SPADE BITS



Assorted sizes

## JAMBSTICK



The JambStick is used to ensure proper drill angles for alarm wiring.

## Pre-Wire Plugs



STB-10 Plug= 3/8" Plug  
SD-70 Plug= 3/4" Plug  
reusable in Brown and White

## Telephone Block and 18" Cord



### Type

RJ31

RJ31-DUAL

### Part Number

TJ-8

(8 wire block w/1 male jack)

TJ-8 DUAL

(8 wire block w/2 male jacks)



## PPD-11 (Push Pull Disconnect)

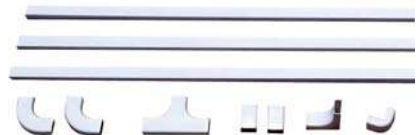


This 2 wire connector features 2 holes used to either mount the PPD-11 or to take the pressure off the wires.

Available: White, Brown, Gray & Clear

## EZ DUCT-IT

Low Voltage Wire Raceway  
Sold in 5 packs. Each pack contains five strips 3/8"x5/8"x5'. Total of 125'.



EZ DUCT-IT connectors sold separately in 25 piece combo-packs.



The Best Guarantee Since 1984 : \$50-1

## TANE ALARM PRODUCTS

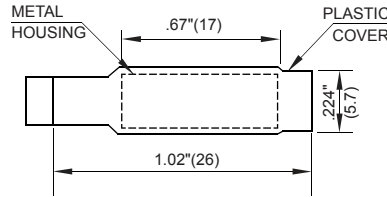
906 JERICHO TURNPIKE, NEW HYDE PARK, NY 11040

Tel: 800-852-5050 • 516-328-3351 • Fax: 516-326-9125

www.tanealarm.com • E-MAIL: info@tanealarm.com

# ACCESSORIES

## B-Connector (DRY FILLED w/WHITE SLEEVE) (SILICONE FILLED w/BLUE SLEEVE)



### MATERIALS:

Outer Shell: Plastic Heat Shrink Tubing

Metal Housing: Brass

Inner Sleeve: Beryllium Copper plated with Bright Nickel

Contact Resistance: 10 Milli Ohms Initial

Dielectric: 1000 V

Strength of Joint: 9 lbs

## TANE WS-1 (Water Sensor with Leads)



Color: White

Size: 2 1/2" L x 1/2" W x 1/2" H

P/N TANE WS-1 WH Packed 5

Early water damage warning w/6' foot jacketed leads

Longer Leads available, 12V Operating @10 ma

Output 9V DC minimum

The WS-1 is a low cost reliable water sensor that works on 12VDC alarm panels, on a 24 hr zone, open loop circuit.

The wiring works similar to a two wire smoke detector. You have a red + and black - wire inside the cable jacket. The sensor draws a very small current from the alarm panel's 24 hr open loop circuit. When the terminals get wet the internal transistor flip flops and locks down to close the circuit, causing the alarm panel to send an alarm.

**Note:** If the Panel uses an EOL resistor, then 6VDC is the minimum requirement.

**Note:** Not compatible with wireless transmitters.

**Always test system for compatibility.**

## TANE BOX WSPR66A · 20 Watt Stainless Steel Box with Dual Tampers and Dual Tone Siren



AVAILABLE SPECIAL  
ORDER ONLY

### Specifications:

- **Housing Material:**  
Stainless Steel with Dual Reed Tampers
- **Speaker Type:**  
Voice coil impedance-8 ohm
- **Rated Input Voltage:** 12 VDC
- **Range Voltage:** 6-15VDC
- **Sound Level:** 115db/m
- **Current Draw:**  
280mA @ 12VDC 8 ohm load
- **Tone Frequency:**  
Steady-1200HZ  
Warble-800HZ to 1200HZ  
1 second ramp cycle
- **Operating Temp:** -20°C to 60°C
- **Dimensions:**  
5.67"Hx5.63"Wx4"D  
(144mmx143mmx100mm)
- **Color:** Stainless Steel

The TANE BOX WSPR66A Stainless-Steel Siren, can be fitted with a TANE LED STROBE (sold separately), to provide visual as well as acoustic warnings and alerts.

