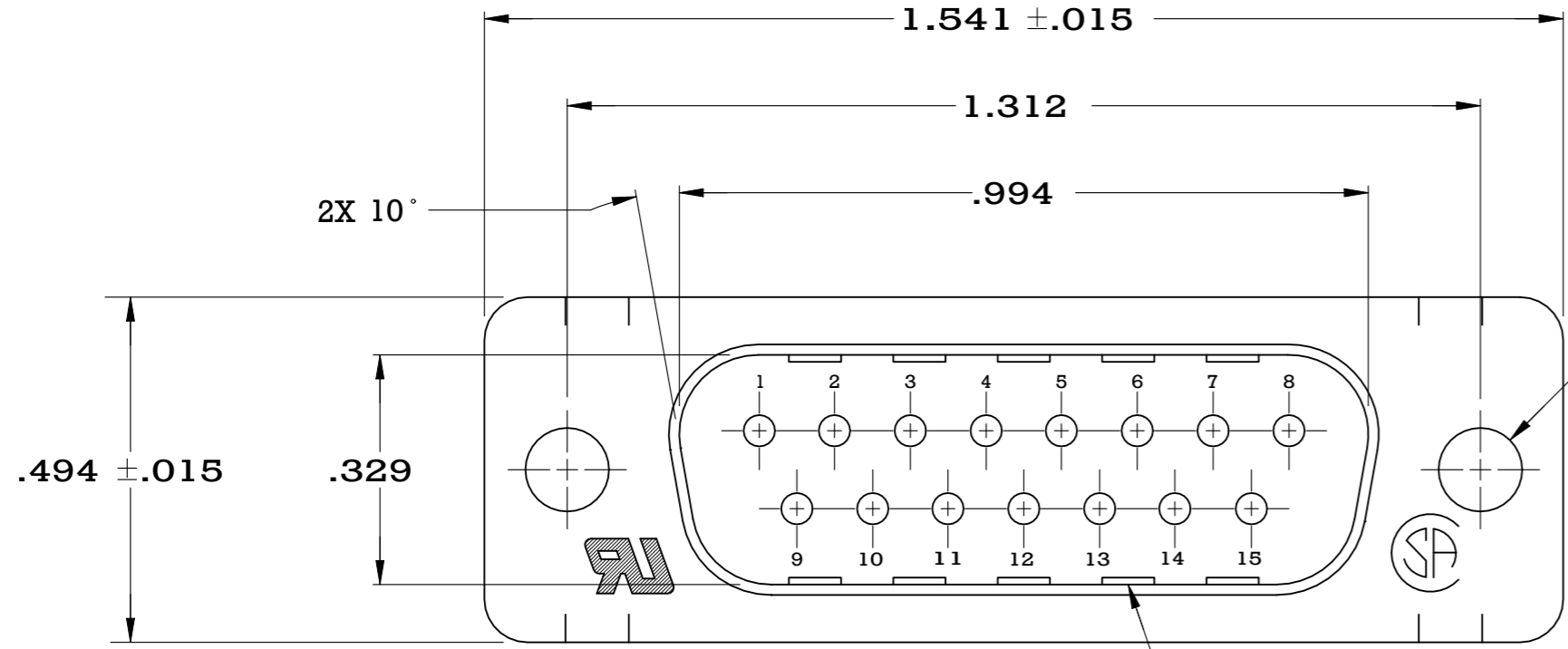
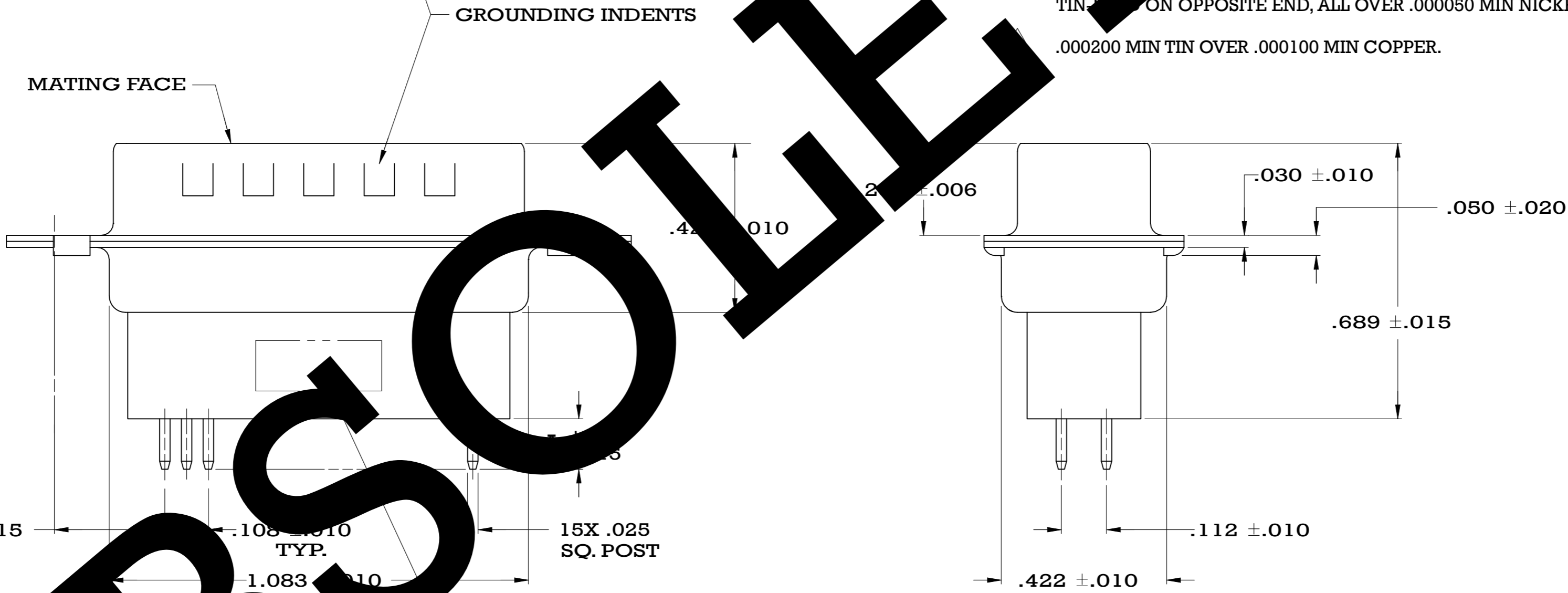


© TE Connectivity. All Rights Reserved.

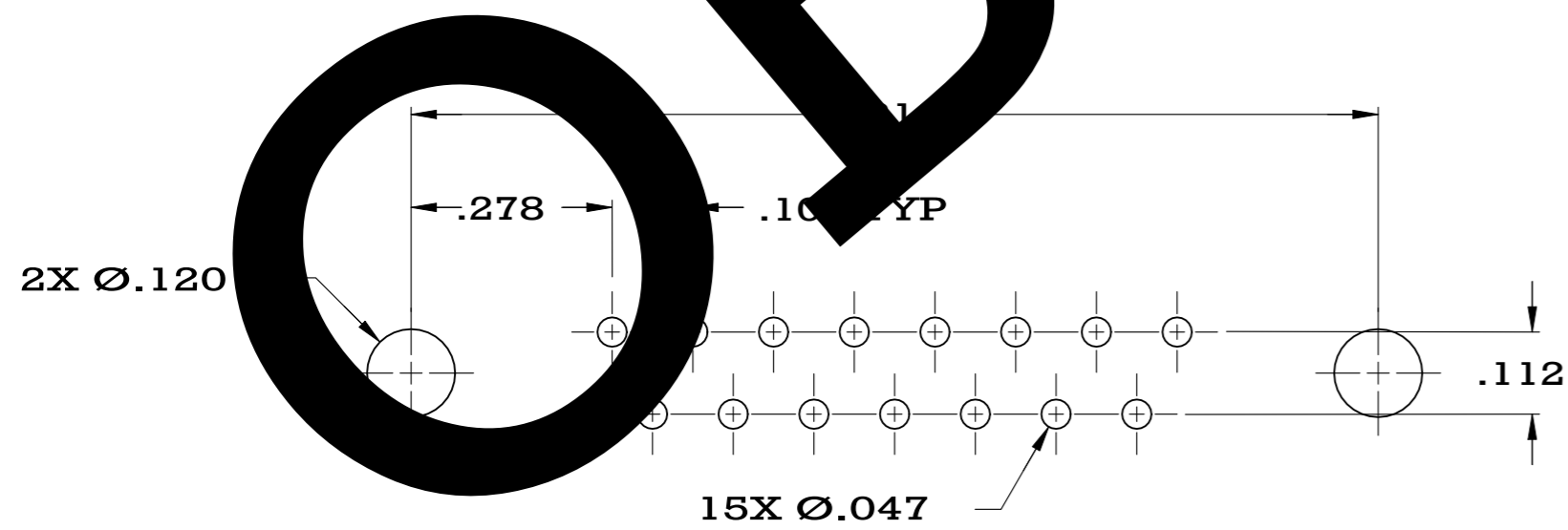
REVISIONS				
P	LTR	DESCRIPTION	DATE	APVD
K1		REVISED PER ECN-22-190736	25NOV2022	KH SZ



- NOTE DELTA
- MOLD PARTS: GLASS-FILLED PBT OR GLASS-FILLED NYLON, UL 94V-0 RATED. COLOR: BLACK. CONTACT MASS: .000100 MIN. SHELLS: STAINLESS STEEL.
- CONTACT FLASH FROM LENGTH OF .000100 MIN FROM MATING END, .000100 MIN TIN-LEAD ON OPPOSITE END, ALL OVER .000100 MIN NICKEL.
- CONTACTS: GOLD PLATED FOR A LENGTH OF .150 FROM MATING END, .000030 MIN THICKNESS. GOLD IN MATED AREA, .000100 MIN TIN-LEAD ON OPPOSITE END, ALL OVER .000050 MIN NICKEL.
- CONTACTS: GOLD OVER PALLADIUM-NICKEL PLATED FOR LENGTH OF .150 MIN FROM MATING END, .000030 MIN TOTAL IN MATED AREA, .000100 MIN TIN-LEAD ON OPPOSITE END, ALL OVER .000050 MIN NICKEL.
- .000200 MIN TIN OVER .000100 MIN COPPER.



"AMP", PART NO. & DATE CODE, STAMPED IN AREA INDICATED, ON FAR SIDE



P.C. BOARD MOUNTING DIMENSIONS

SUPSD BY 745411-1	3	.188	745411-8
SUPSD BY 745411-1	4	.188	745411-7
OBSOLETE	3	.651	745411-6
OBSOLETE	4	.651	745411-5
OBSOLETE	3	.427	745411-4
OBSOLETE	4	.427	745411-3
SUPSD BY 745411-1	3	.125	745411-2
	4	.125	745411-1
CONTACT FINISH	DIMENSION A	PART NUMBER	

THIS DRAWING IS A CONTROLLED DOCUMENT.		DWN	J. GERACE	10-29-83
DIMENSIONS: INCHES		CHK	J. GERACE	10-29-83
TOLERANCES UNLESS OTHERWISE SPECIFIED:		APVD	B. TAYLOR	1-4-84
0 PLC	± -	PRODUCT SPEC	108-40025	
1 PLC	± -	APPLICATION SPEC	114-40013	
2 PLC	± .005	WEIGHT	0.000000	
3 PLC	± -	CUSTOMER DRAWING		
4 PLC	± -	SHELLS: 5		
ANGLES	± 2°	CONTACTS: SEE TABLE		
MATERIAL		TE Connectivity		
FINISH		PLUG ASSEMBLY, SIZE 2, 15 POS, VERTICAL, W/ GROUNDING INDENTS, AMPLIMITE		
SCALE		SIZE	CAGE CODE	DRAWING NO
NTS		A2	00779	C=745411
SHEET		RESTRICTED TO		REV
1 OF 1		-		K1