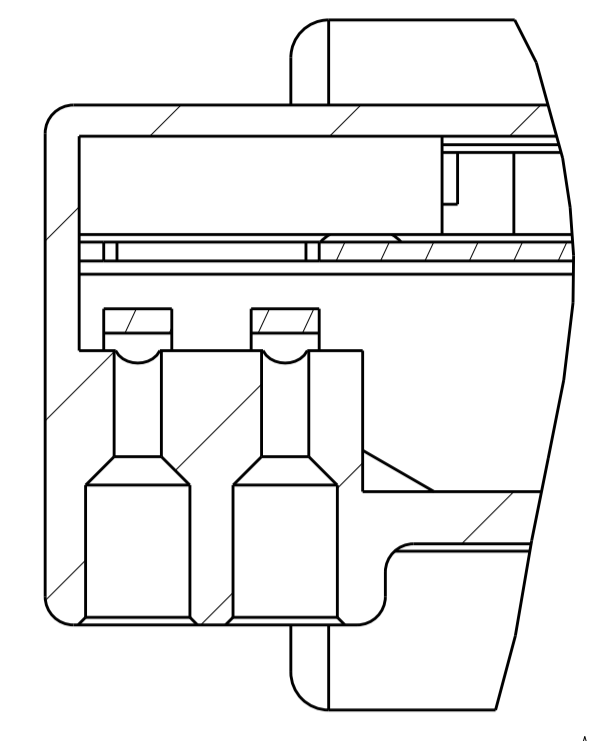


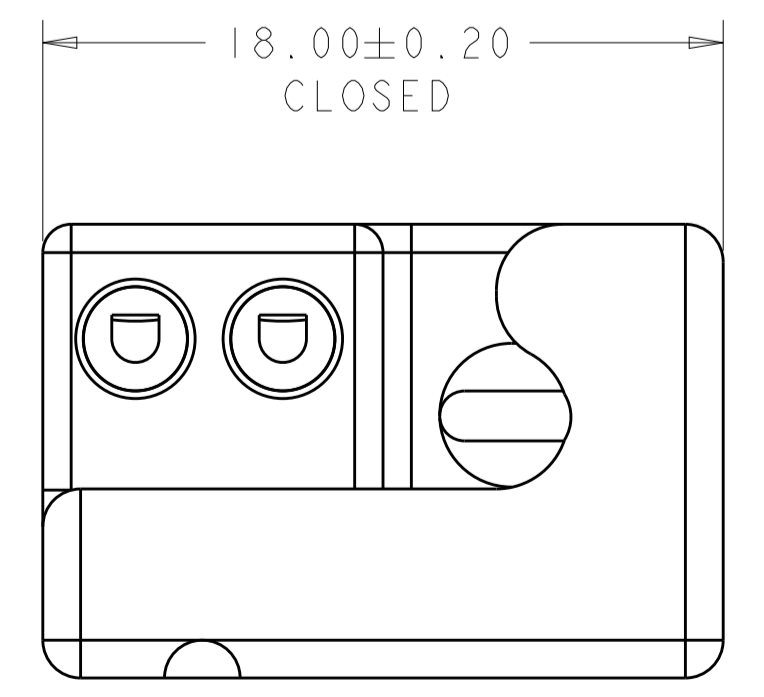
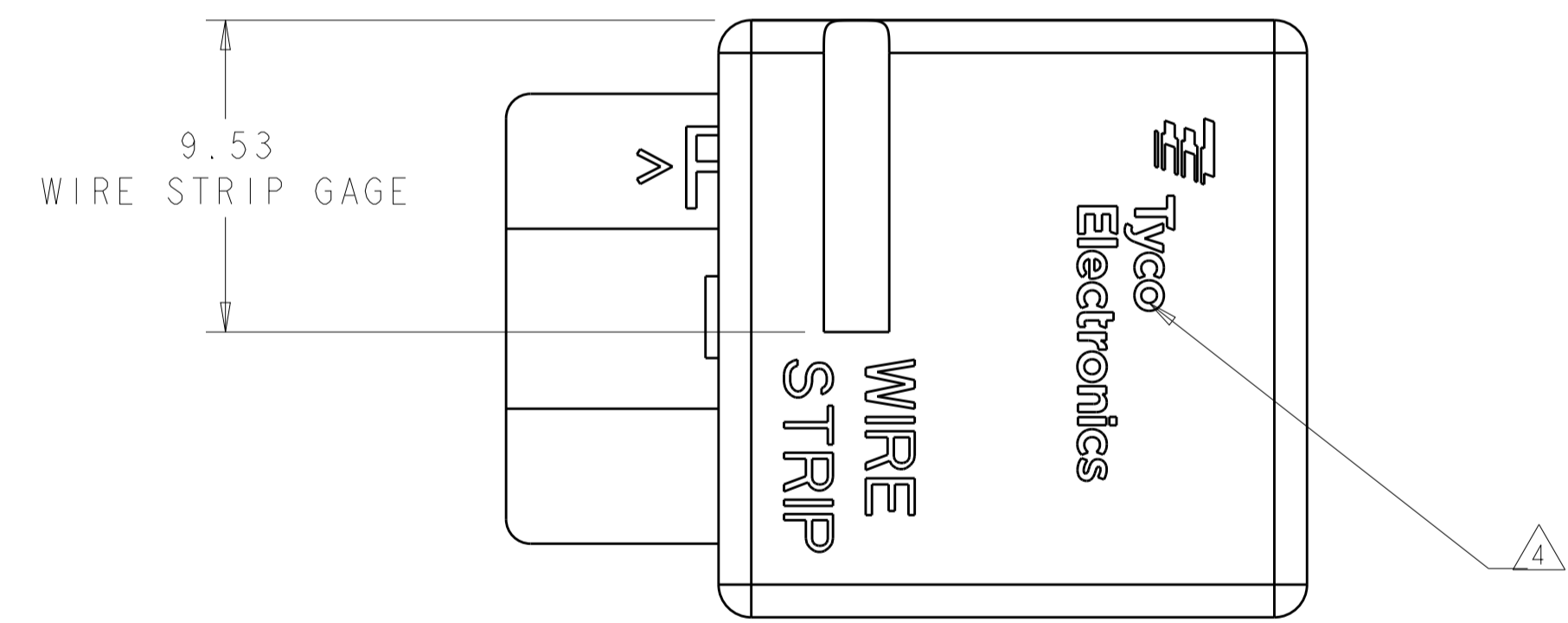
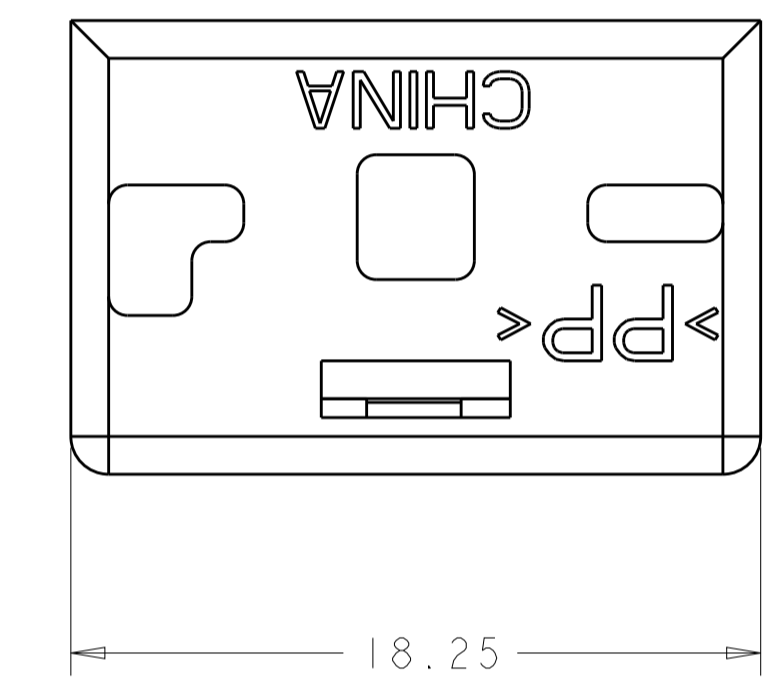
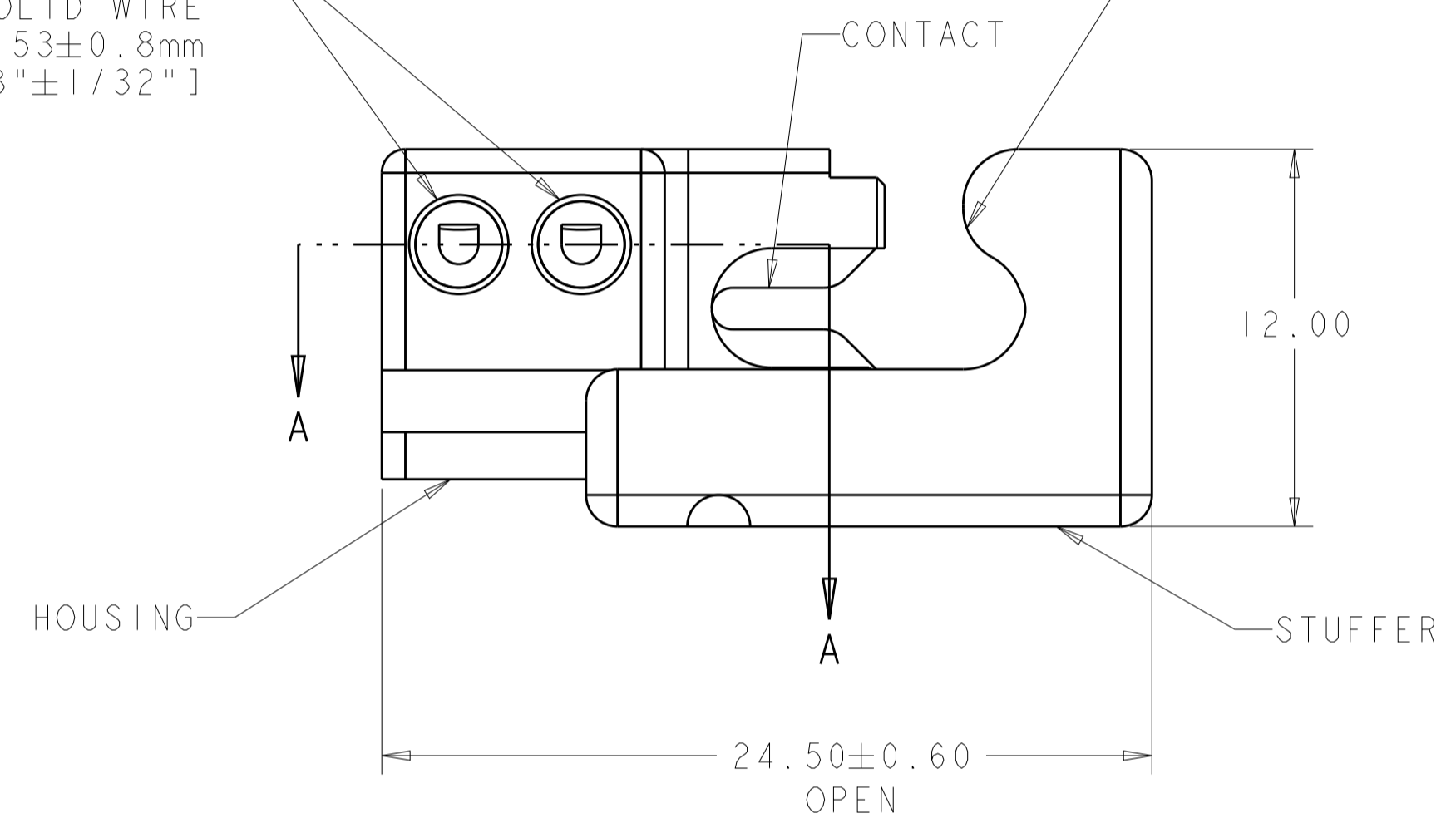
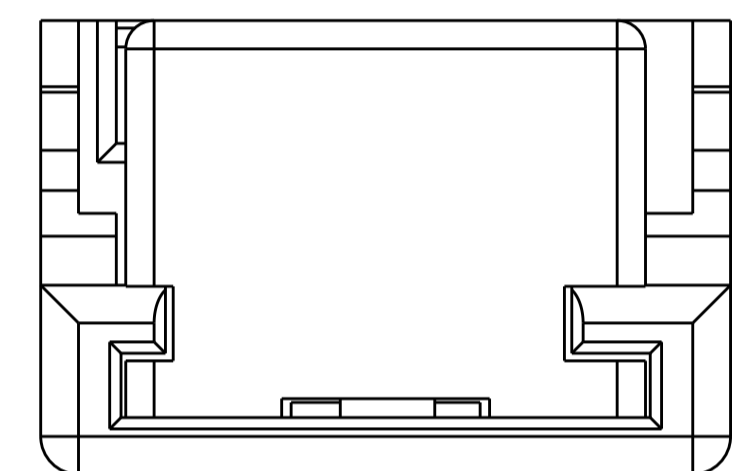
| REVISONS | | DATE | DWN | APVD |
|----------|-----|---------------------------|-----------|-------|
| P | LTN | DESCRIPTION | | |
| B2 | | REVISED PER ECO-17-012433 | 24AUG2017 | SK DD |



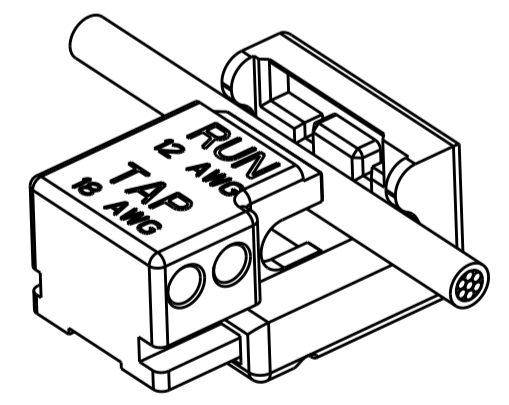
SECTION A-A

POKE-IN CAVITIES
 ACCEPTS 18 AWG PRE-STRIPPED
 SOLID WIRE
 STRIP LENGTHS: 9.53±0.8mm
 [3/8"±1/32"]

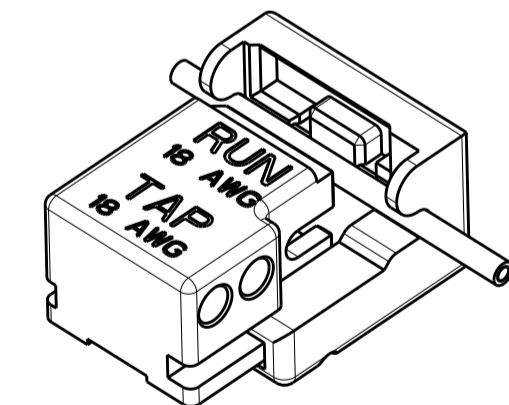
IDC AREA
 1811027-1 ACCEPTS 12 AWG SOLID OR STRANDED (19 STRANDS MAX), THHN WIRE
 1811027-2 ACCEPTS 18 AWG SOLID TFN/TEWN WIRE
 CONTINUOUS (FEEDTHRU) WIRE



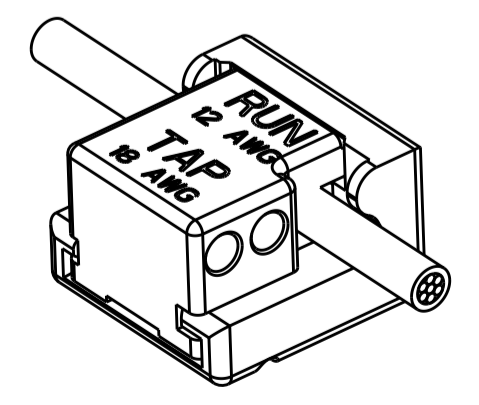
TERMINATED DETAIL



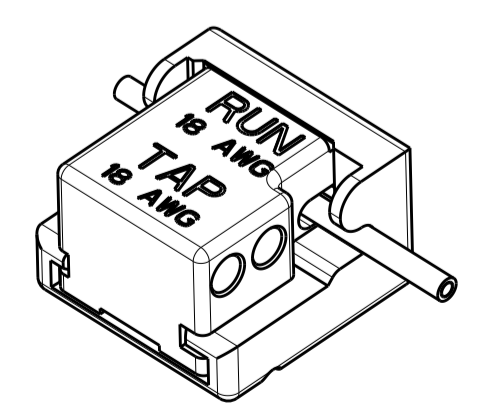
SCALE 2:1



SCALE 2:1



SCALE 2:1



SCALE 2:1

1811027-1

1811027-2

- △ MATERIAL:
 HOUSING: THERMOPLASTIC, COLOR: SEE TABLE
 STUFFER: THERMOPLASTIC, COLOR: SEE TABLE
 CONTACT: COPPER ALLOY, 0.50 THICK
- △ FINISH:
 CONTACT: TIN PLATE
- 3. PRODUCT SPECIFICATION: 108-2219
 APPLICATION SPECIFICATION: 114-13151
- △ THE LOGO MAY BE JUST "TYCO" UNTIL COMPONENTS
 ARE CONVERTED.

| | | |
|--------------------|------------------------|-------------|
| GRAY | 14 AWG | 1811027-3 |
| BLUE | 18 AWG | 1811027-2 |
| BROWN | 12 AWG | 1811027-1 |
| CONNECTOR COLOR | FEED THRU WIRE SIZE | PART NUMBER |

| | | | | |
|--|--------------|-------------------------------|--|--|
| THIS DRAWING IS A CONTROLLED DOCUMENT. | | DWN D. FABIAN 28-Oct-04 | TE Connectivity | |
| DIMENSIONS: | | CHK J. ALLISON 16-Nov-07 | | |
| mm | 0 PLC ± | APVD 16-Nov-07 16-Nov-07 | NAME ASSEMBLY, WIRE SPLICE IDC / POKE-IN | |
| | 1 PLC ±0.13 | PRODUCT SPEC 108-2219 | SIZE CAGE CODE DRAWING NO A100779C=1811027 | |
| | 2 PLC ±0.013 | APPLICATION SPEC 114-13151 | RESTRICTED TO | |
| | 3 PLC ± | WEIGHT | SCALE 5:1 SHEET 1 OF 1 REV B2 | |
| | 4 PLC ± | FINISH | CUSTOMER DRAWING | |
| | ANGLES ±1 | | | |