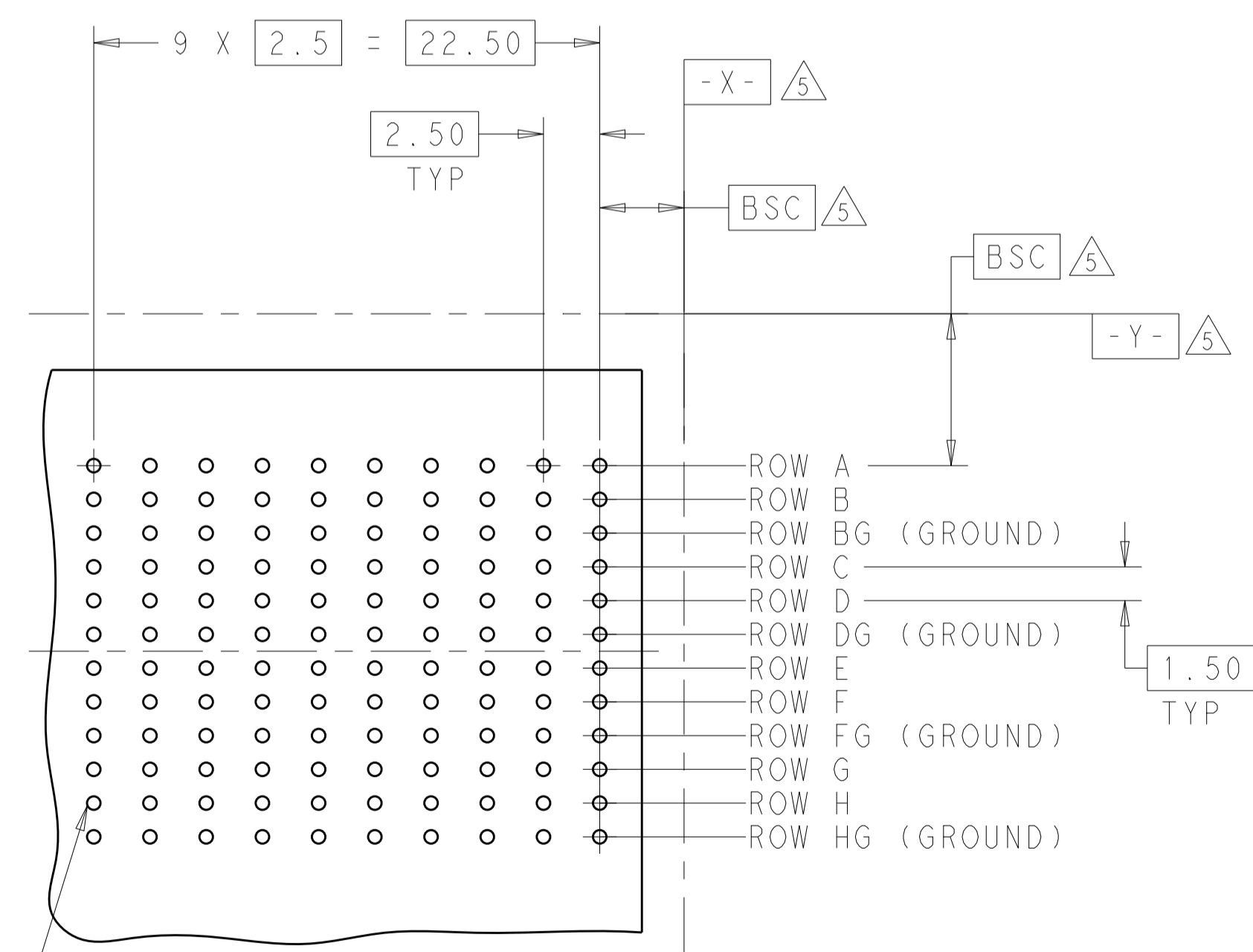
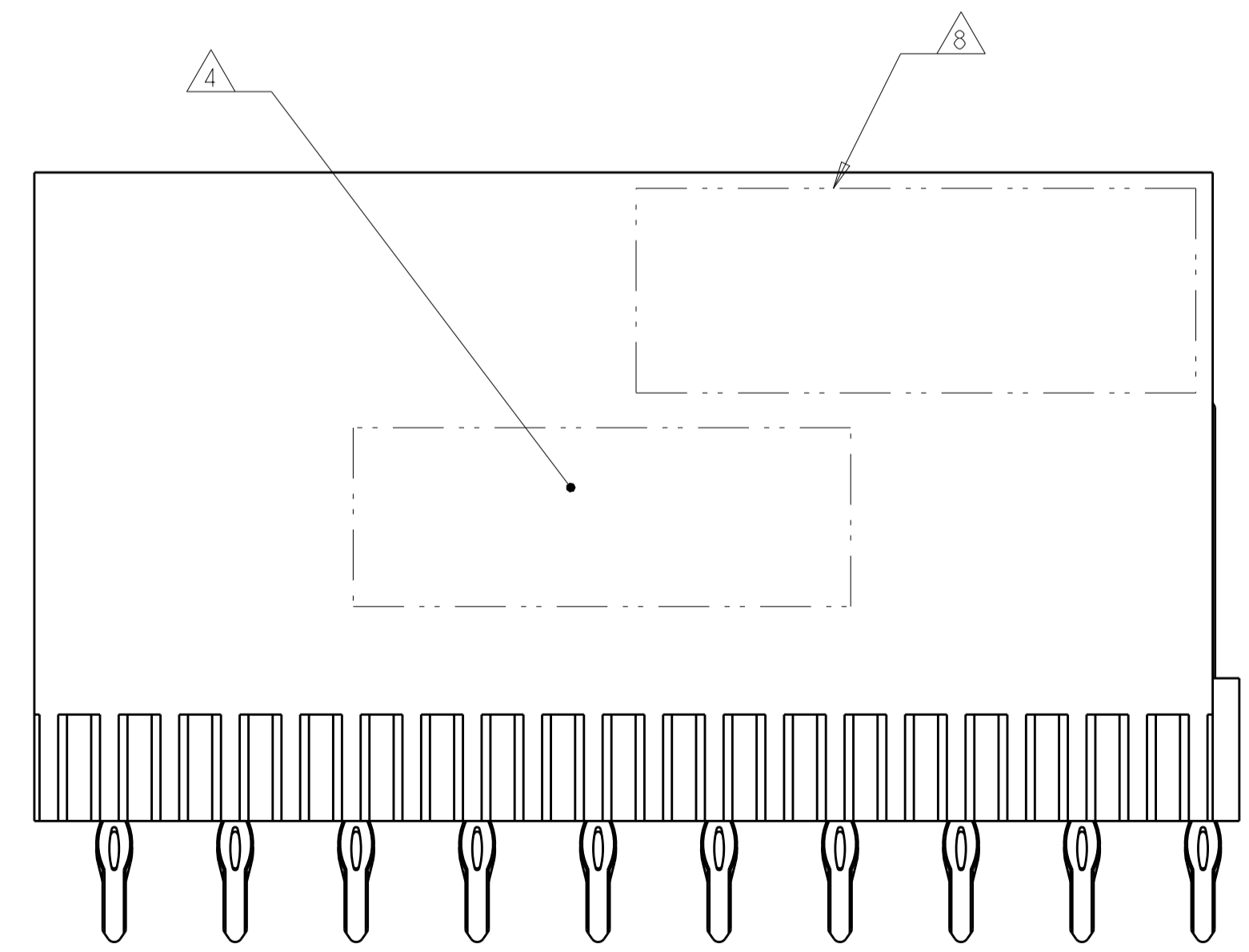
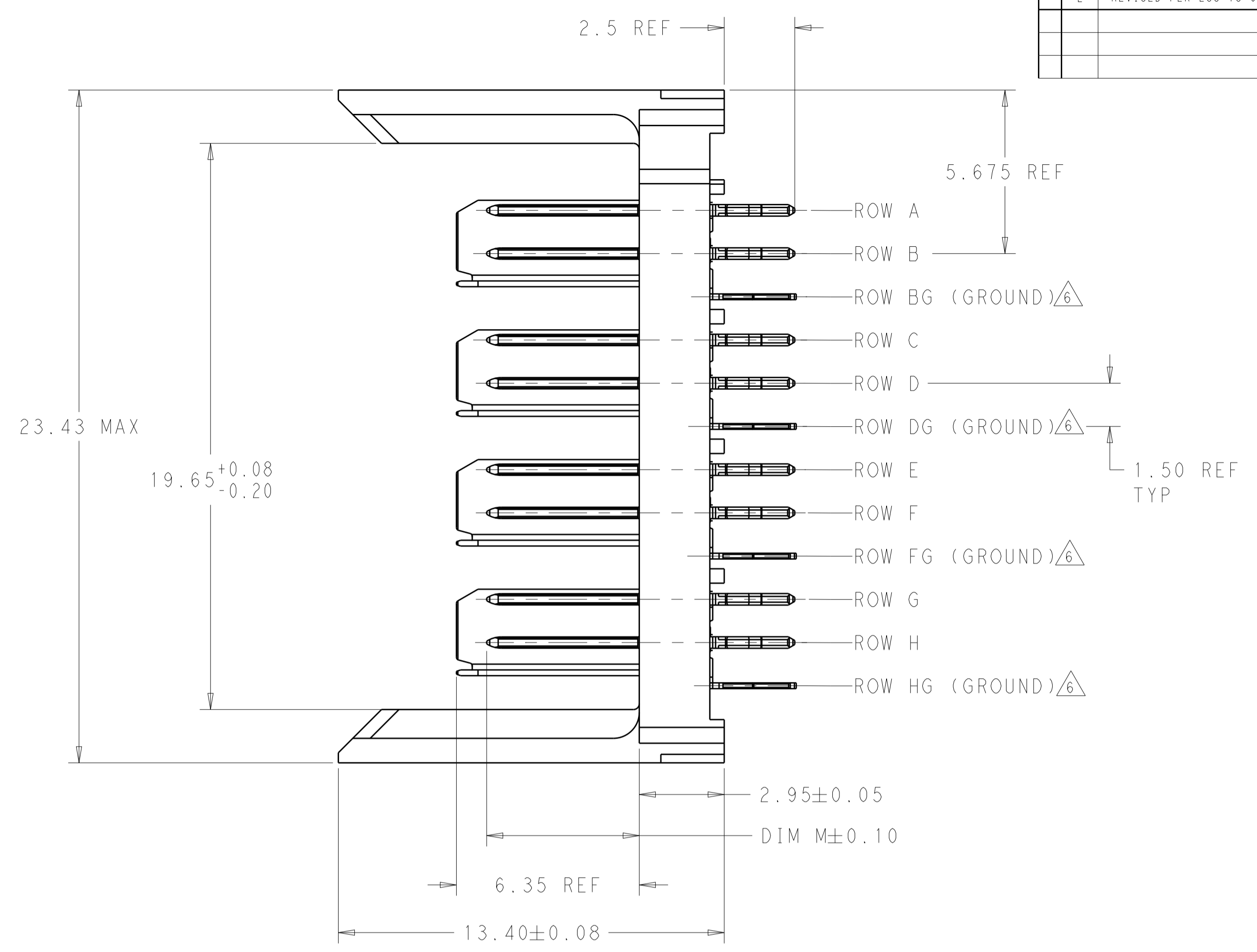
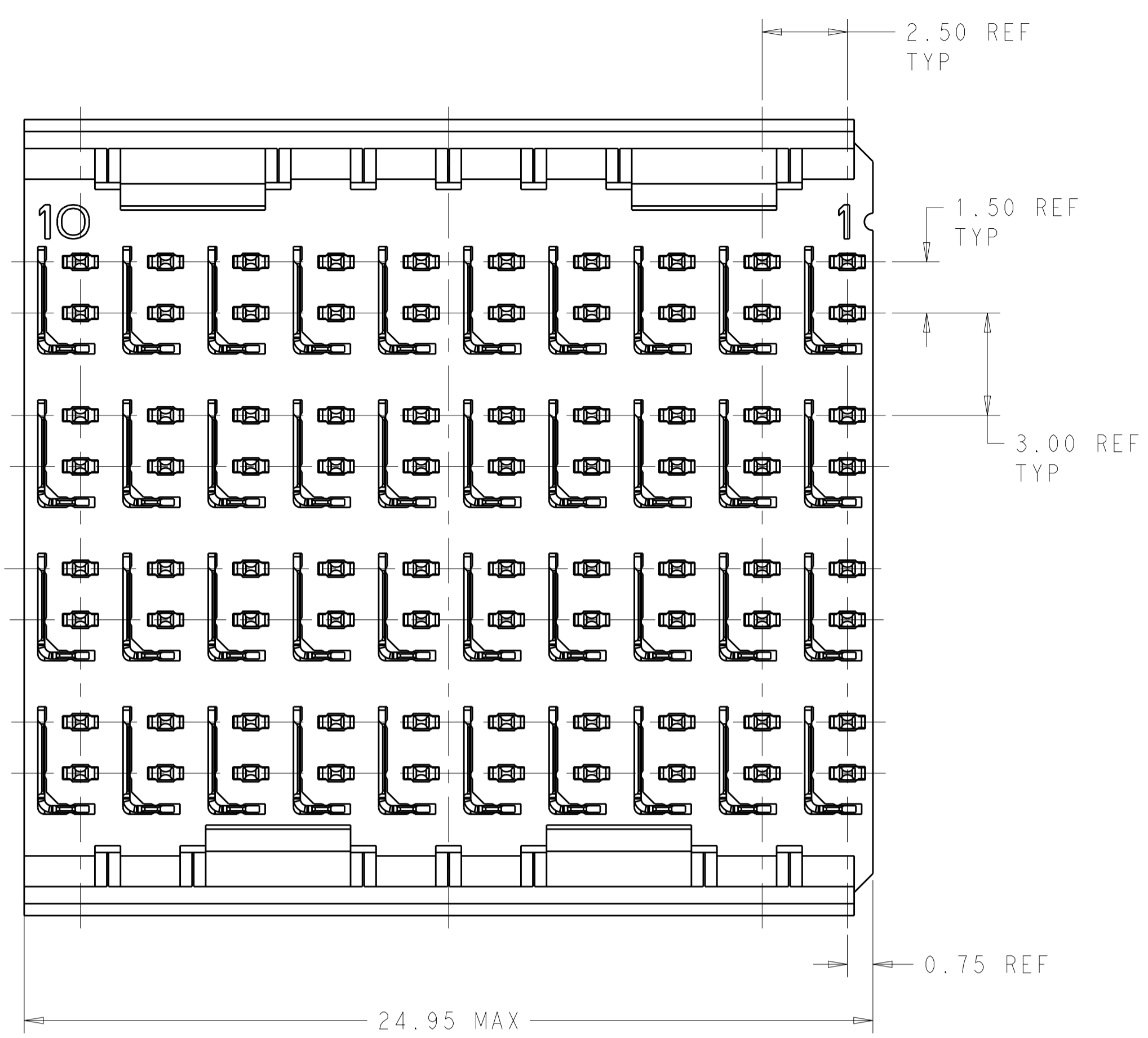


REVISIONS				
P.	LTN.	DESCRIPTION	DATE	APVD.
E		REVISED PER ECO-18-018129	09OCT2019	AP DS



- 1 REFERENCE APPLICATION SPEC 114-13059 FOR RECOMMENDED PLATED THRU HOLE DIAMETER AND PLATING THICKNESSES.
- 2 MATERIAL:
CONTACT AND SHIELD - PHOSPHOR BRONZE
HOUSING - GLASS FILLED POLYESTER, UL 94V-0.
- 3 FINISH: CONTACT AND SHIELD
MATING AREA-1.27 μm MIN GOLD OVER 1.27 μm MIN NICKEL
COMPLIANT PIN AREA-0.5 μm MIN TIN OVER 1.27 μm MIN NICKEL.
- 4 CONNECTOR MARKED WITH PART NUMBER AND DATE CODE.
- 5 DATUMS AND BASIC DIMENSIONS ESTABLISHED BY CUSTOMER.
- 6 THE FOUR GROUNDS IN EACH COLUMN ARE COMMONED.
- 7. CONTACT AREA LUBRICATED WITH BELLCORE APPROVED LUBRICANT. TECHNICAL REFERENCE: GR-1217-CORE, ISSUE 1, NOVEMBER 1995.
- 8 TE OR TE CONNECTIVITY LOGO IS LOCATED.

⊕ ∅ 0.05 Ⓢ X Y
ALL PLATED THRU HOLES

RECOMMENDED PC BOARD LAYOUT, BACKPLANE, COMPONENT SIDE SHOWN
SCALE 4:1

5.30	6469628-1
DIM M	PART NUMBER

THIS DRAWING IS A CONTROLLED DOCUMENT.		DWN: D. HUMBERT 30MAR2010 CHG: J. EARY 30MAR2010 APVD: -	TE TE Connectivity
DIMENSIONS: mm 	TOLERANCES UNLESS OTHERWISE SPECIFIED: 0 PLC ± 1 PLC ±0.1 2 PLC ±0.01 3 PLC ±0.001 4 PLC ±0.0001 ANGLES ±	PRODUCT SPEC APPLICATION SPEC WEIGHT CUSTOMER DRAWING	NAME: HEADER ASSEMBLY, 4 PAIR, 2.5mm TAIL, 25mm HMZd SIZE: CAGE CODE: DRAWING NO: A100779C=6469628 RESTRICTED TO: SCALE 8:1 SHEET 1 OF 1 REV E