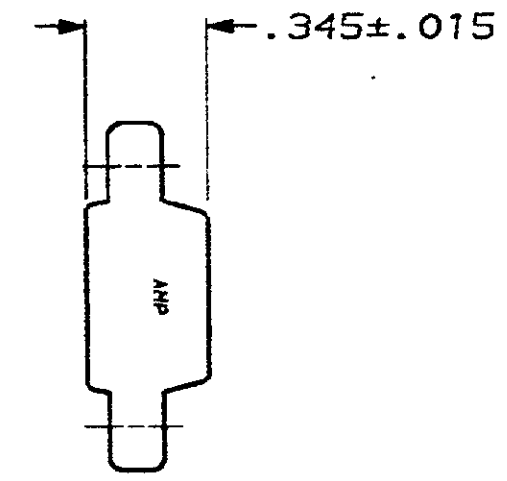
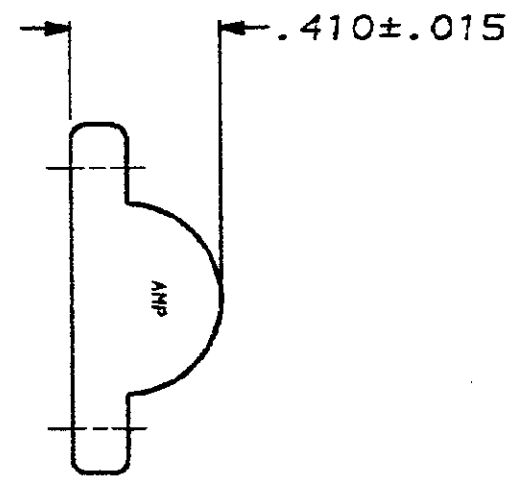
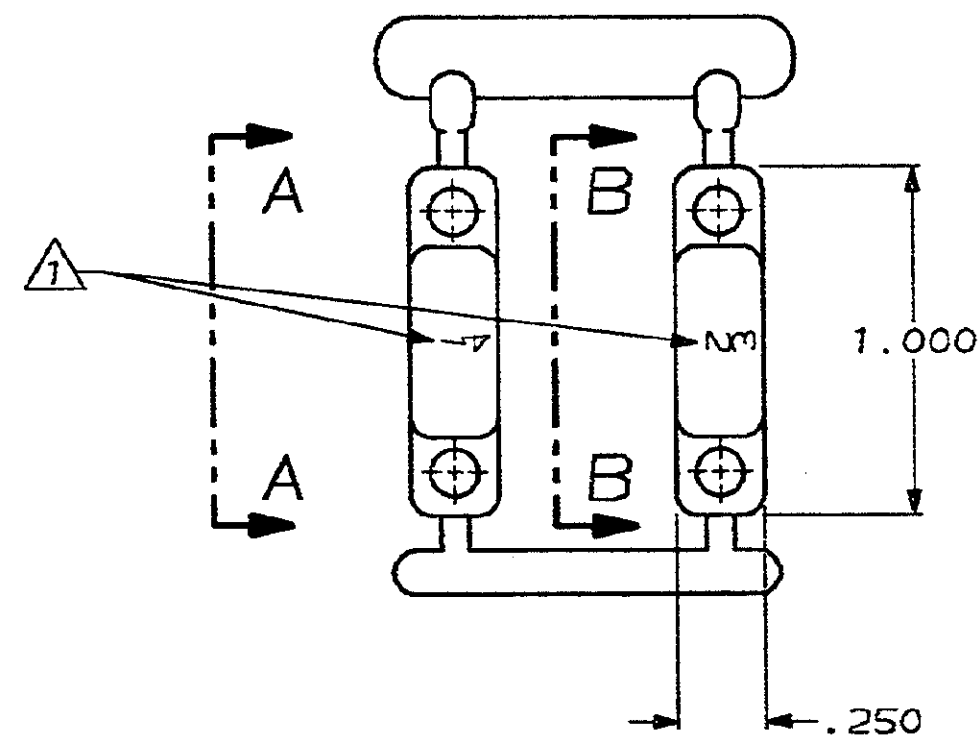


DRAWING MADE IN THIRD ANGLE PROJECTION

THIS DRAWING IS UNPUBLISHED. RELEASED FOR PUBLICATION, 19
 © COPYRIGHT 19 BY AMP INCORPORATED. ALL INTERNATIONAL RIGHTS RESERVED.

MOO	LOC	DIST	P	F	ZONE	LTR	REVISIONS	DATE	APPD
23	BD	39				C	REDRAWN	4/23/91	-



VIEW A-A

VIEW B-B

207681-1
 PART NUMBER

1 MOLDDED CHARACTER FOR IDENT, .125 MAX HIGH LOCATED APPROX. AS SHOWN (1 & 2 ON FRONT FACE 3 & 4 ON REAR FACE)

DO NOT SCALE PRINT. UNLESS SPECIFIED DIMENSIONS IN INCHES TOLERANCES ON: 2 PLC DEC ± - 3 PLC DEC ± .010 ANGLES ± -		DR 4/23/91 A GRAFF CHK 3-4-92 M. LEFKER APPD 3-4-92 K. BEAVER APPD 3-4-92 C. ROIDE PRODUCT SPEC - APPLICATION SPEC - WEIGHT -	AMP AMP Incorporated Harrisburg, PA 17105-3608 NAME CABLE CLAMP INSERT, SHELL SIZE 17, CPC	
MATERIAL THERMOPLASTIC BLACK	FINISH -	SIZE B	CAGE CODE 00779	DRAWING NO 207681
		SCALE 2:1	SHEET 1 OF 1	

CUSTOMER DRAWING