

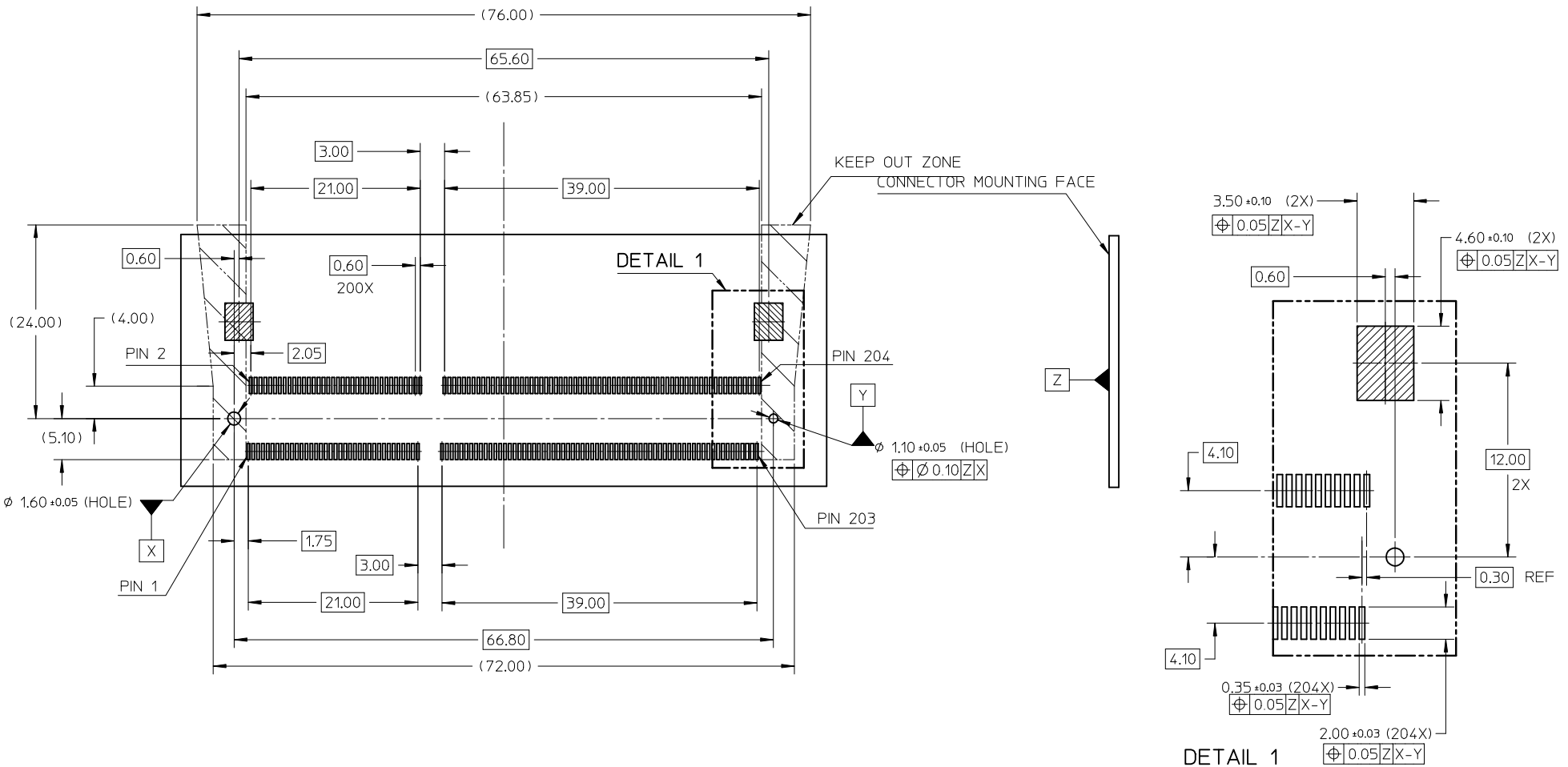
- NOTE :
- SECTION Z-Z**
- MATERIAL:
HOUSING : LCP - UL94V-0. COLOR: BLACK
CONTACTS : COPPER ALLOY
LOCK LEVER : STAINLESS STEEL
 - FINISHES:
CONTACT AREA : REFER TABLE IN SHT 6
SOLDER TAIL AREA : REFER TABLE IN SHT 6
LOCK LEVER SOLDER PAD: 100 MICRINCH / 2.54 MICROMETER MATTE TIN OVER 50 MICRINCH / 1.27 MICROMETER NICKEL.
 - RECOMMENDED MODULE LAYOUT SHALL BE AS PER JEDEC MO-268
 - PRODUCT SPECIFICATION : REFER TABLE IN SHT 6
 - PACKAGING SPECIFICATION : PART SHALL BE PACKED IN TRAY / TAPE & REEL
 - EDGE OF CONTACT PADS SHALL BE FREE OF BURRS AND EXTERNAL TIE BARS
 - THE ADDITION OF THIS BEVEL IS A FABRICATION OPTION AND IS NOT REQUIRED. THE BEVEL AIDS THE INSERTION OF THE MODULES INTO THE CONNECTOR. THE BEVEL MUST NOT ENCORACH ONTO GOLD PADS.
 - COPLANARITY INCLUDES HOLD DOWN 0.1 MAX

THIS DESIGN IS BASED ON DESIGN OBJECTIVES AND IS STRICTLY TENTATIVE IT MAY CHANGE BASED ON RESULTS OF ADDITIONAL DESIGN REVIEWS AND VERIFICATIONS.

| | | | | | | | |
|----|---------------------------|-----------------|--|------------------|-------|--------------|------------------------|
| A4 | CUST REQ DIM ADD | QUALITY SYMBOLS | GENERAL TOLERANCES (UNLESS SPECIFIED) | DIMENSION STYLE | SCALE | DESIGN UNITS | THIRD ANGLE PROJECTION |
| | EC NO: S2010-0146 | ▽=0 | mm INCH | MM ONLY | NTS | METRIC | |
| | DRWN:VMANICKAM 2009/08/18 | ∠=0 | 4 PLACES ± --- ± --- | DRAWN BY DATE | | | |
| | CHKD:CCTEH 2009/08/20 | | 3 PLACES ± --- ± --- | CHECKED BY DATE | | | |
| | APPR:SHLENI 2009/08/20 | | 2 PLACES ± 0.2 ± --- | APPROVED BY DATE | | | |
| | | | 1 PLACE ± --- ± --- | GGLEE 2006/09/12 | | | |
| | | | ANGULAR ± 1 ° | MATERIAL NO. | | | |
| | | | DRAFT WHERE APPLICABLE MUST REMAIN WITHIN DIMENSIONS | SEE TABLE | | | |

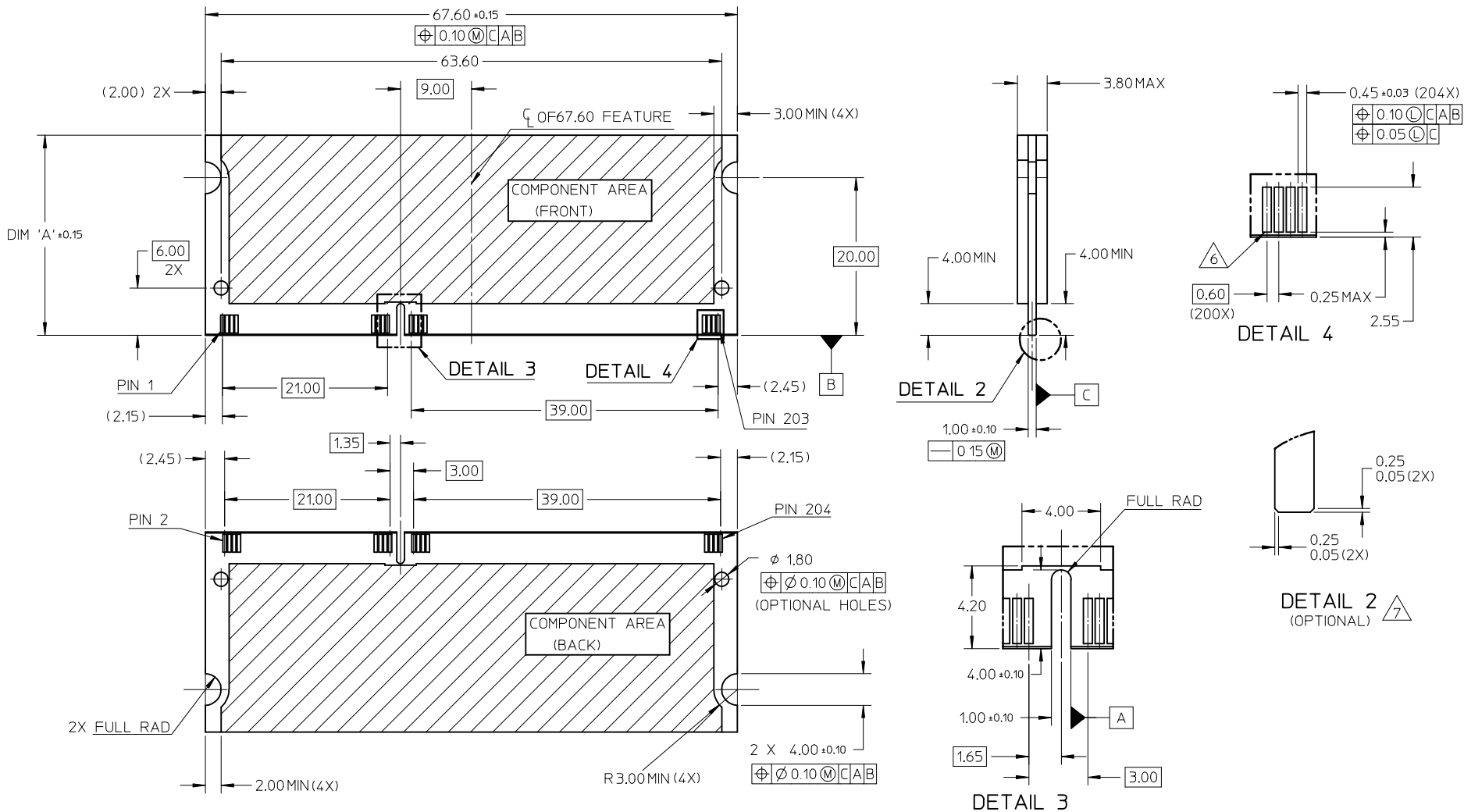
| | | | |
|------------------|---|------------------------|--|
| DRAWN BY DATE | | TITLE | |
| VMANICKAM | 2006/08/08 | DDR3 SO DIMM, 204 CKTS | |
| CHECKED BY DATE | | 5.2MM HEIGHT | |
| SHLENI | 2006/09/12 | STANDARD ORIENTATION | |
| APPROVED BY DATE | | MOLEX INCORPORATED | |
| GGLEE | 2006/09/12 | MOLEX INCORPORATED | |
| MATERIAL NO. | | DOCUMENT NO. | |
| SEE TABLE | | SD-78121-001 | |
| SIZE | | SHEET NO. | |
| A3 | THIS DRAWING CONTAINS INFORMATION THAT IS PROPRIETARY TO MOLEX INCORPORATED AND SHOULD NOT BE USED WITHOUT WRITTEN PERMISSION | 1 OF 6 | |

RECOMMENDED PCB LAYOUT FOR STANDARD ORIENTATION (TOP VIEW)



| | | | | | | | |
|---|--|---|---|---|--|---|---------------------|
| CUST REQ DIM ADD EC NO: S2010-0146 DRWN:VMANICKAM 2009/08/18 CHKD:CCTEH 2009/08/20 APPR:SHLENI 2009/08/20 | QUALITY SYMBOLS ▽=0 ◻=0 | GENERAL TOLERANCES (UNLESS SPECIFIED) mm INCH 4 PLACES ± --- ± --- 3 PLACES ± --- ± --- 2 PLACES ± 0.2 ± --- 1 PLACE ± --- ± --- ANGULAR ± 1° | DIMENSION STYLE MM ONLY DRAWN BY: VMANICKAM CHECKED BY: SHLENI APPROVED BY: GGLEE MATERIAL NO. | SCALE NTS DATE: 2006/08/08 DATE: 2006/09/12 DATE: 2006/09/12 | DESIGN UNITS METRIC THIRD ANGLE PROJECTION | TITLE DDR3 SO DIMM, 204 CKTS 5.2MM HEIGHT STANDARD ORIENTATION MOLEX INCORPORATED | SHEET NO. 2 OF 6 |
| | DRAFT WHERE APPLICABLE MUST REMAIN WITHIN DIMENSIONS | SEE TABLE | DOCUMENT NO. SD-78121-001 | THIS DRAWING CONTAINS INFORMATION THAT IS PROPRIETARY TO MOLEX INCORPORATED AND SHOULD NOT BE USED WITHOUT WRITTEN PERMISSION | | | |
| | A4 | REV | | | | | |
| | | | | | | | |

RECOMMENDED MATING PCB CONFIGURATION



| SDRAM VARIATIONS FROM JEDEC MO-268 | | | |
|------------------------------------|-------|-------|-------|
| | AA | BB | CC |
| DIM 'A' | 25.40 | 31.75 | 30.00 |

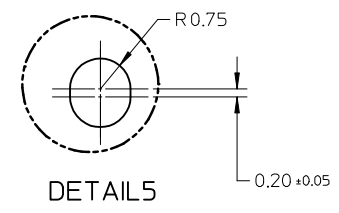
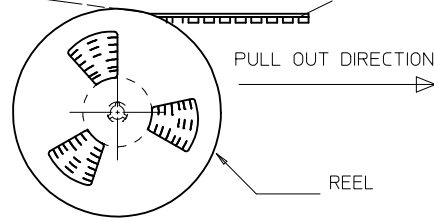
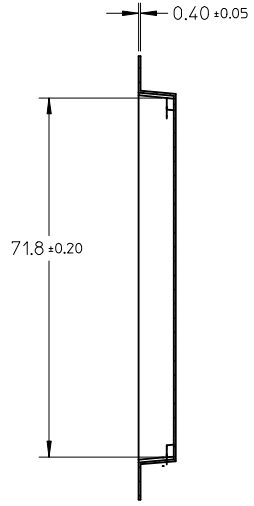
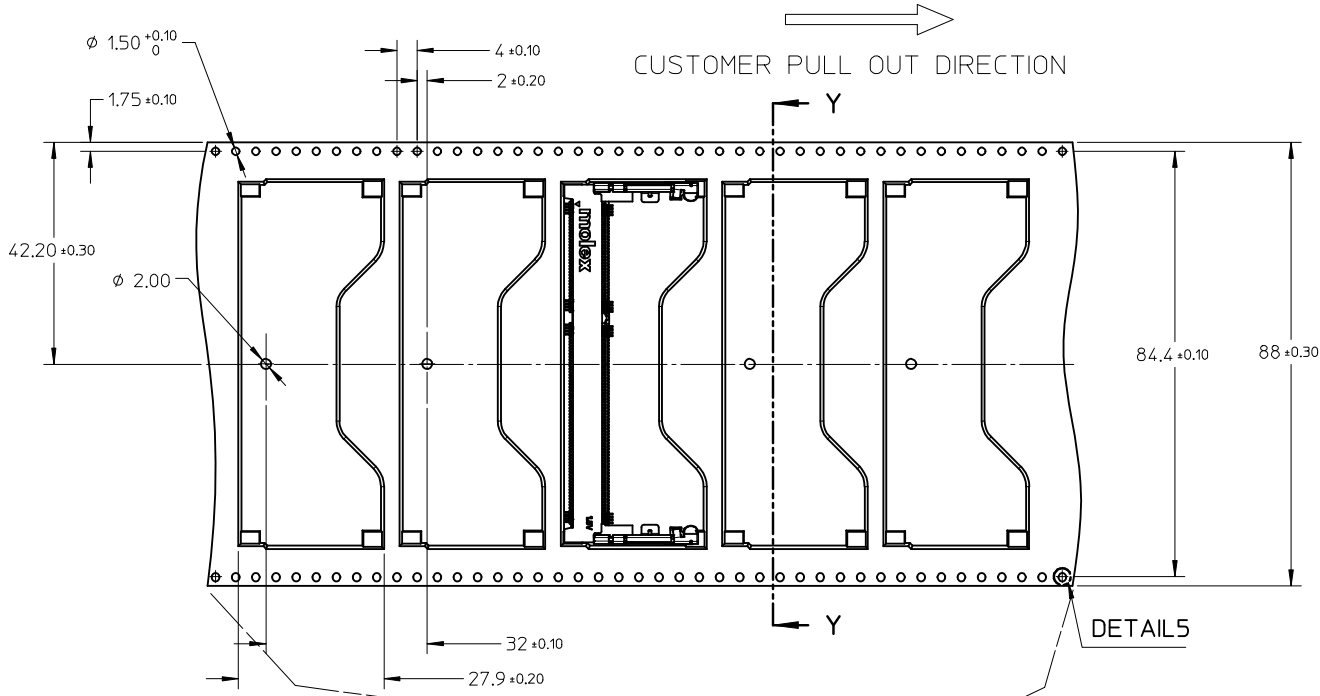
| | |
|-------------------|-------------|
| CUST REQ DIM ADD | 2009/08/18 |
| EC NO: S2010-0146 | 2009/08/20 |
| DRWN: VMANICKAM | 2009/08/20 |
| CHKD: CCTEH | 2009/08/20 |
| APPR: SHLENI | 2009/08/20 |
| REV | DESCRIPTION |
| A4 | |

| QUALITY SYMBOLS | GENERAL TOLERANCES (UNLESS SPECIFIED) | |
|-----------------|--|-------|
| | mm | INCH |
| ▽=0 | 4 PLACES ± --- | ± --- |
| ∇=0 | 3 PLACES ± --- | ± --- |
| | 2 PLACES ± 0.2 | ± --- |
| | 1 PLACE ± --- | ± --- |
| | ANGULAR ± 1 ° | |
| | DRAFT WHERE APPLICABLE MUST REMAIN WITHIN DIMENSIONS | |

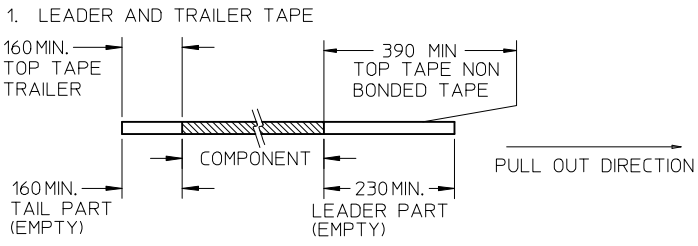
| DIMENSION STYLE | | SCALE | DESIGN UNITS | THIRD ANGLE PROJECTION |
|-----------------|------------|------------------------|--------------|------------------------|
| MM ONLY | | NTS | METRIC | |
| DRAWN BY | DATE | TITLE | | |
| VMANICKAM | 2006/08/08 | DDR3 SO DIMM, 204 CKTS | | |
| CHECKED BY | DATE | 5.2MM HEIGHT | | |
| SHLENI | 2006/09/12 | STANDARD ORIENTATION | | |
| APPROVED BY | DATE | MOLEX INCORPORATED | | |
| GGLEE | 2006/09/12 | MATERIAL NO. | | |
| | | DOCUMENT NO. | | |
| | | SHEET NO. | | |

| | | |
|---|--------------|--------|
| SEE TABLE | SD-78121-001 | 3 OF 6 |
| THIS DRAWING CONTAINS INFORMATION THAT IS PROPRIETARY TO MOLEX INCORPORATED AND SHOULD NOT BE USED WITHOUT WRITTEN PERMISSION | | |

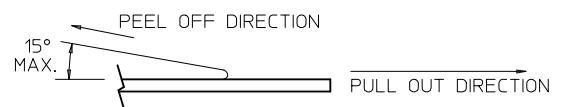
10 9 8 7 6 5 4 3 2 1



NOTES:



2. PEELING OFF FORCE OF THE TOP TAPE: 10 - 150gf. (PEELING DIRECTION AS SHOWN IN FOLLOWING FIGURE)

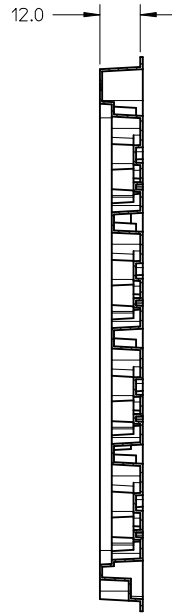


- 3. TAPE AND REEL SPECIFICATION IS AS PER EIA-481.
- 4. TAPE AND REEL QUANTITY : 200 PCS/ REEL.
- 5. THE TAPE IS TREATED FOR ANTI-STATIC.

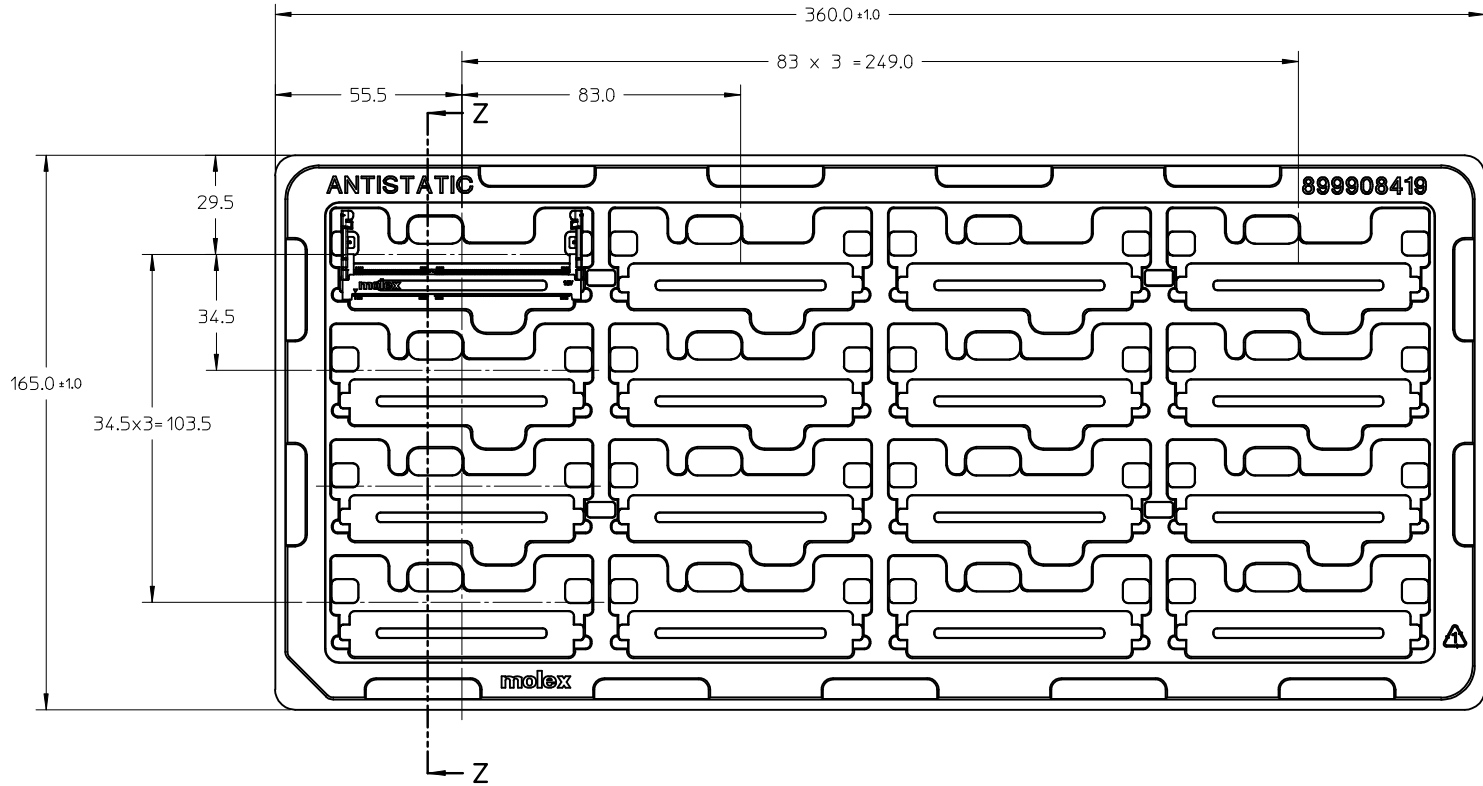
| | | | | | | | | | | |
|---|--|---------------------------------------|--------------|----------------------------|---|--------------------|---|------------------------|--|--|
| CUST REQ DIM ADD EC NO: S2010-0146 DRWN:VMANICKAM 2009/08/18 CHKD:CCTEH 2009/08/20 APPR:SHLENI 2009/08/20 | DESCRIPTION QUALITY SYMBOLS ▽=0 ◻=0 | GENERAL TOLERANCES (UNLESS SPECIFIED) | | DIMENSION STYLE MM ONLY | | SCALE NTS | DESIGN UNITS METRIC | THIRD ANGLE PROJECTION | | |
| | | | mm | INCH | DRAWN BY VMANICKAM | DATE 2006/08/08 | TITLE DDR3 SO DIMM, 204 CKTS 5.2MM HEIGHT STANDARD ORIENTATION | | | |
| | | 4 PLACES | ± --- | ± --- | CHECKED BY SHLENI | DATE 2006/09/12 | MOLEX INCORPORATED DOCUMENT NO. SD-78121-001 SHEET NO. 4 OF 6 | | | |
| | | 3 PLACES | ± --- | ± --- | APPROVED BY GGLEE | DATE 2006/09/12 | | | | |
| 2 PLACES | ± 0.2 | ± --- | MATERIAL NO. | | SEE TABLE | | | | | |
| 1 PLACE | ± --- | ± --- | ANGULAR ± 1° | | THIS DRAWING CONTAINS INFORMATION THAT IS PROPRIETARY TO MOLEX INCORPORATED AND SHOULD NOT BE USED WITHOUT WRITTEN PERMISSION | | | | | |
| DRAFT WHERE APPLICABLE MUST REMAIN WITHIN DIMENSIONS | | | | | | | | | | |

9 8 7 6 5 4 3 2 1

10 9 8 7 6 5 4 3 2 1



SECTION Z-Z



NOTES:

- 1. NO OF CAVITY : 4 X 4 = 16
- 2. UNSPECIFIED TOLERANCE FOR TRAY ±0.5

| | | | | | | | |
|---|--|---------------------------------------|----------------------|---|--------------------|--|------------------------|
| CUST REQ DIM ADD EC NO: S2010-0146 DRWN:VMANICKAM 2009/08/18 CHKD:CCTEH 2009/08/20 APPR:SHLENI 2009/08/20 | QUALITY SYMBOLS | GENERAL TOLERANCES (UNLESS SPECIFIED) | | DIMENSION STYLE | SCALE | DESIGN UNITS | THIRD ANGLE PROJECTION |
| | ▼=0 □=0 | mm | INCH | MM ONLY | NTS | METRIC | |
| | | 4 PLACES ± --- ± --- | 3 PLACES ± --- ± --- | DRAWN BY | DATE | TITLE | |
| | | 2 PLACES ± 0.2 ± --- | 1 PLACE ± --- ± --- | CHECKED BY | DATE | DDR3 SO DIMM, 204 CKTS 5.2MM HEIGHT STANDARD ORIENTATION | |
| | ANGULAR ± 1 ° | | APPROVED BY | DATE | MOLEX INCORPORATED | | |
| | DRAFT WHERE APPLICABLE MUST REMAIN WITHIN DIMENSIONS | | MATERIAL NO. | DOCUMENT NO. | | SHEET NO. | |
| A4 | REV | SEE TABLE | | SD-78121-001 | | 5 OF 6 | |
| | | SIZE A3 | | THIS DRAWING CONTAINS INFORMATION THAT IS PROPRIETARY TO MOLEX INCORPORATED AND SHOULD NOT BE USED WITHOUT WRITTEN PERMISSION | | | |

9 8 7 6 5 4 3 2 1

| PART NO | CONTACT AREA FINISH | SOLDER TAIL FINISH | PACKAGING | PRODUCT SPECIFICATION |
|------------|--|---|---------------------|-----------------------|
| 78121-0001 | 3µN GOLD OVER 50µN/1.27µM NICKEL | 100 MICROINCH /2.54 MICROMETER MATTE TIN OVER 50 MICEOINCH / 1.27 MICROMETER. | TRAY (360X165MM) | PS-78121-003 |
| 78121-1501 | 15µN/0.38µM GOLD OVER 50µN/1.27µM NICKEL | | | PS-78121-002 |
| 78121-3001 | 30µN/0.76µM GOLD OVER 50µN/1.27µM NICKEL | | | PS-78121-001 |
| 78121-0002 | 3µN GOLD OVER 50µN/1.27µM NICKEL | | | PS-78121-003 |
| 78121-1502 | 15µN/0.38µM GOLD OVER 50µN/1.27µM NICKEL | | | PS-78121-002 |
| 78121-3002 | 30µN/0.76µM GOLD OVER 50µN/1.27µM NICKEL | | | PS-78121-001 |
| 78121-0011 | 3µN GOLD OVER 50µN/1.27µM NICKEL | 100 MICROINCH /2.54 MICROMETER MATTE TIN OVER 50 MICEOINCH / 1.27 MICROMETER. | TAPE&REEL | PS-78121-003 |
| 78121-1511 | 15µN/0.38µM GOLD OVER 50µN/1.27µM NICKEL | | | PS-78121-002 |
| 78121-3011 | 30µN/0.76µM GOLD OVER 50µN/1.27µM NICKEL | | | PS-78121-001 |
| 78121-0012 | 3µN GOLD OVER 50µN/1.27µM NICKEL | | | PS-78121-003 |
| 78121-1512 | 15µN/0.38µM GOLD OVER 50µN/1.27µM NICKEL | | | PS-78121-002 |
| 78121-3012 | 30µN/0.76µM GOLD OVER 50µN/1.27µM NICKEL | | | PS-78121-001 |

| | | | | | | | | | | | | | | | | | | | | | |
|--|-------------------------------|--|------------------------------|---------------------|------|----------|-------|-------|----------|-------|-------|----------|-------|-------|---------|-------|-------|-----------------------------------|--------------|------------------------|------------------------|
| CUST REQ DIM ADD EC NO: S2010-0146 DRWN:VMANICKAM 2009/08/18 CHKD:CCTEH 2009/08/20 APPR:SHLENI 2009/08/20 | QUALITY SYMBOLS ▽=0 ◻=0 | GENERAL TOLERANCES (UNLESS SPECIFIED) <table border="1"> <tr> <td></td> <td>mm</td> <td>INCH</td> </tr> <tr> <td>4 PLACES</td> <td>± ---</td> <td>± ---</td> </tr> <tr> <td>3 PLACES</td> <td>± ---</td> <td>± ---</td> </tr> <tr> <td>2 PLACES</td> <td>± 0.2</td> <td>± ---</td> </tr> <tr> <td>1 PLACE</td> <td>± ---</td> <td>± ---</td> </tr> </table> | | mm | INCH | 4 PLACES | ± --- | ± --- | 3 PLACES | ± --- | ± --- | 2 PLACES | ± 0.2 | ± --- | 1 PLACE | ± --- | ± --- | DIMENSION STYLE MM ONLY | SCALE NTS | DESIGN UNITS METRIC | THIRD ANGLE PROJECTION |
| | | mm | INCH | | | | | | | | | | | | | | | | | | |
| | 4 PLACES | ± --- | ± --- | | | | | | | | | | | | | | | | | | |
| | 3 PLACES | ± --- | ± --- | | | | | | | | | | | | | | | | | | |
| 2 PLACES | ± 0.2 | ± --- | | | | | | | | | | | | | | | | | | | |
| 1 PLACE | ± --- | ± --- | | | | | | | | | | | | | | | | | | | |
| DRAWN BY VMANICKAM | DATE 2006/08/08 | TITLE DDR3 SO DIMM, 204 CKTS 5.2MM HEIGHT STANDARD ORIENTATION | | | | | | | | | | | | | | | | | | | |
| CHECKED BY SHLENI | DATE 2006/09/12 | MOLEX INCORPORATED | | | | | | | | | | | | | | | | | | | |
| APPROVED BY GGLEE | DATE 2006/09/12 | MATERIAL NO. SEE TABLE | DOCUMENT NO. SD-78121-001 | SHEET NO. 6 OF 6 | | | | | | | | | | | | | | | | | |