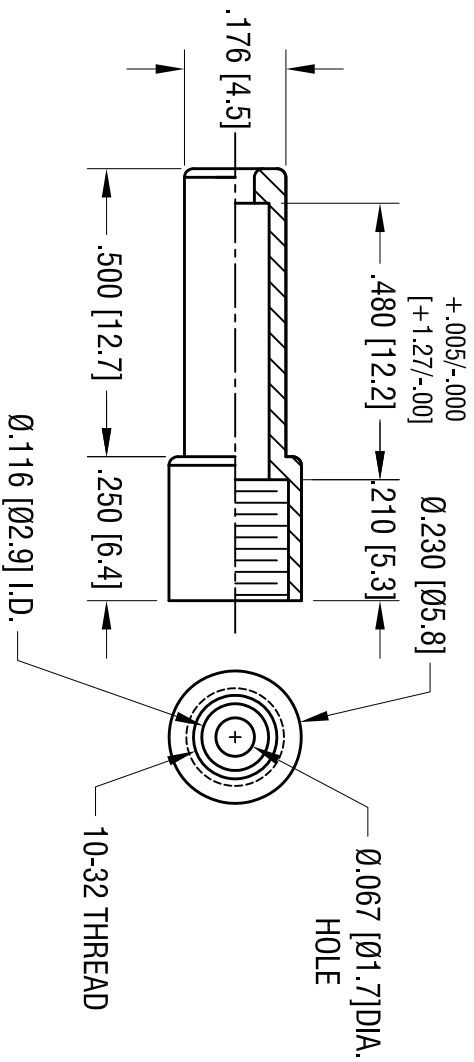
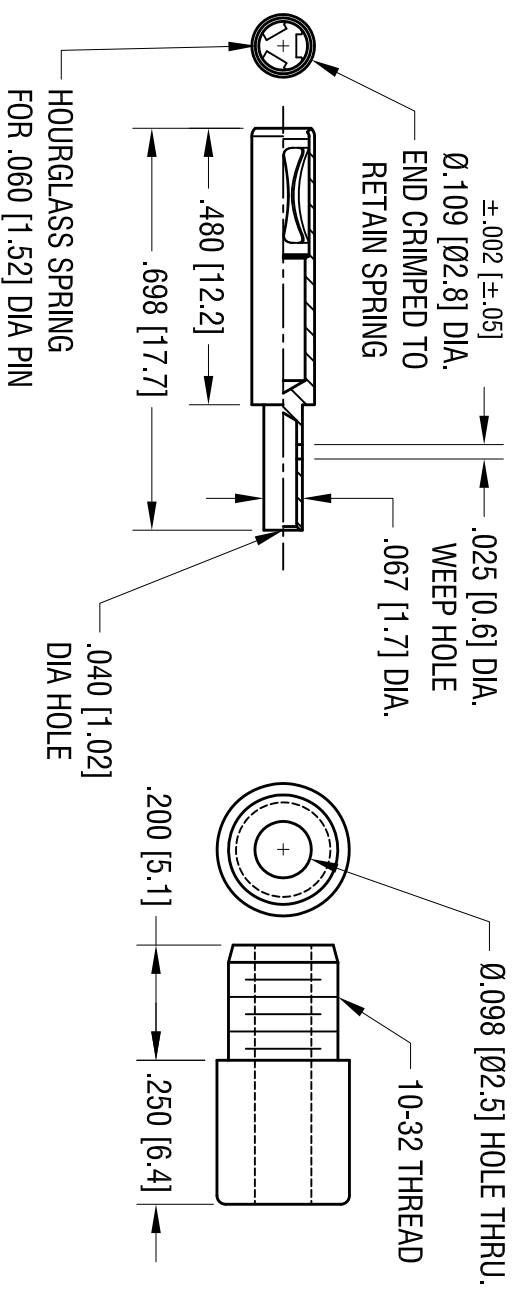


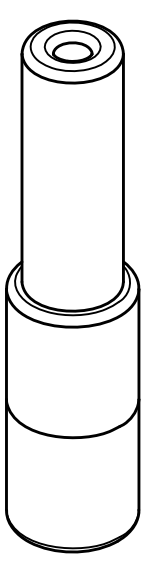
INSULATOR BASE



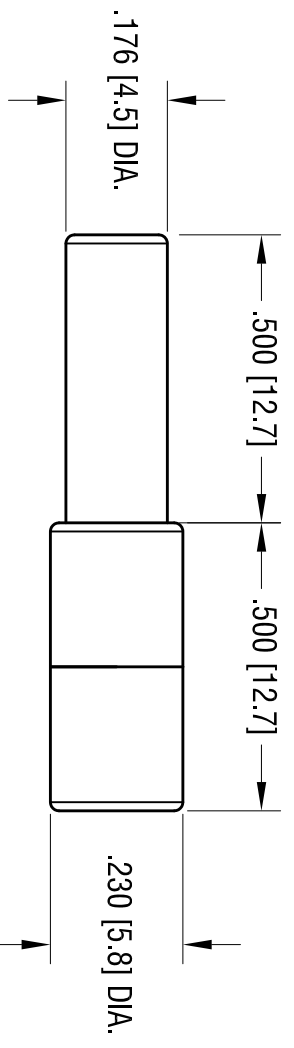
BODY



INSULATOR CAP



PART NUMBER	COLOR
9012	WHITE
9013	RED
9014	BLACK
9015	GREEN
9016	YELLOW
9017	BLUE



- NOTES:
- INSULATOR - POLYCARBONATE  
BODY - BRASS, GOLD PLATE  
CONTACT - BERYLLIUM COPPER, GOLD PLATE
  - SUPPLIED UNASSEMBLED

THIS DOCUMENT IS THE PROPERTY OF KEYSTONE ELECTRONICS CORP. AND SHALL NOT BE REPRODUCED, DISTRIBUTED OR USED AS A BASIS FOR MANUFACTURE WITHOUT PRIOR WRITTEN PERMISSION FROM KEYSTONE ELECTRONICS CORP.

**KEYSTONE ELECTRONICS CORP.**

www.keystec.com • ASTORIA, N.Y. 11105-2017 • Tel (718) 956-8900

PART NAME SHROUDED SPRING CONTACT

MATERIAL AS NOTED

FINISH AS NOTED

TOLERANCES	INCH	[MM]	CODE	DWG NO.
DECIMAL	$\pm .005$	[± 0.15]	C/M	9012-9017
ANGULAR	$\pm 1^\circ$			
UNLESS OTHERWISE SPECIFIED				

DRN BY	DATE
HAMILTON	28MAY09
APP'D	SCALE
	3X