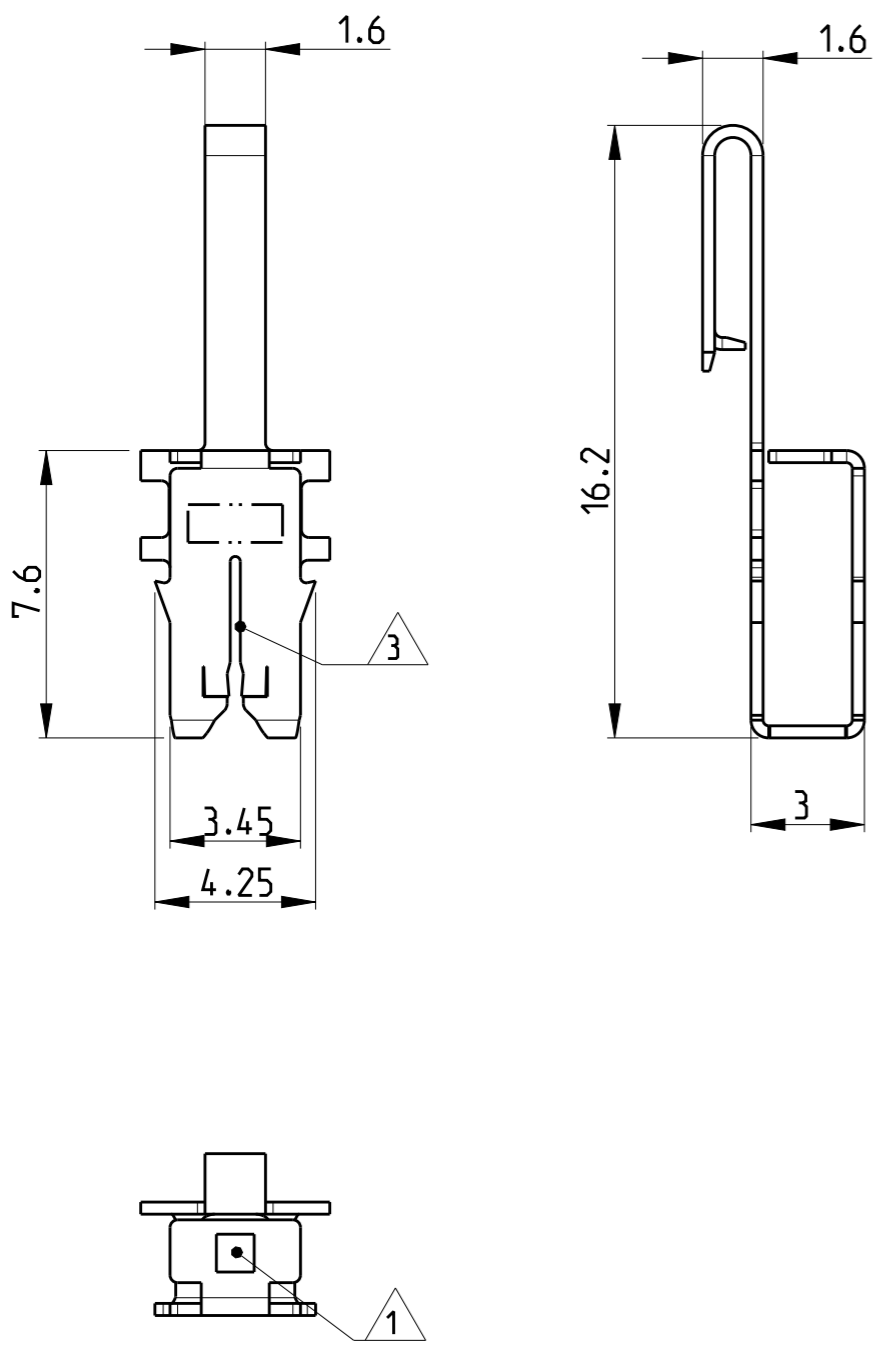


THIS DRAWING IS UNPUBLISHED
 VERTRAULICHE UNVERÖFFENTLICHTE ZEICHNUNG
 © COPYRIGHT 2009

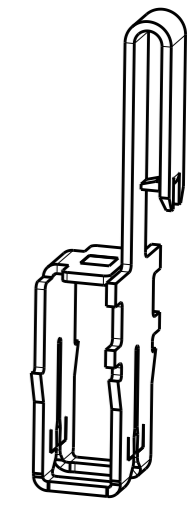
RELEASED FOR PUBLICATION
 FREI FUER VERÖFFENTLICHUNG
 2008 - 2009
 ALL RIGHTS RESERVED.
 ALLE RECHTE VORBEHALTEN

| | | | | | | | |
|--------------|------|-------------------------|-----|---|-----------|-----|------|
| LOC | DIST | REVISIONS ÄNDERUNGEN | | | | | |
| IR | - | P | LTR | DESCRIPTION BESCHREIBUNG | DATE | DWN | APVD |
| PROJEKT NR.: | | | B | PN 1394431-3 RELEASED | 02DEC2010 | PKS | MP |
| | | | B1 | -1 AND -2 VERSIONS RELEASED FOR GENERAL SALES | 19AUG2011 | PKS | RRP |
| | | | B2 | 1- VERSIONS ADDED. REELING INFO ADDED | 24JAN2013 | PKS | TK |
| | | | B3 | 1394431-5 ADDED AND NOTE 3 UPDATED | 29MAR2018 | SV | PKS |



- 7 PRELIMINARY PART- NOT FOR PRODUCTION. PN WILL BE SUPPLIED IN LOOSE PIECE.
Einleitende teil - NICHT FÜR DIE PRODUKTION. PN WIRD IN LOSE GELIEFERT WERDEN.
- 6 REELING PER FIG 2
Aufwickeln nach Bild 2
- 5 REELING PER FIG 1
Aufwickeln nach Bild 1
- 4 Materialdicke
0.32 ±0.012mm
STOCK THICKNESS
- 3 Schlitz geeignet fuer: Lackdraht, einzel Ø0.40....0.63mm
oder 2 Draehte gleichen Durchmessers Ø0.40....0.56mm
oder 2 Aluminiumdraehte gleichen Durchmessers Ø0.50...0.84.
ALUMINIUM IM BEREICH GILT FÜR POST VERZINNT ARTIKEL Nr. NUR
SLOT ACCEPTS: SINGLE Ø0.40....0.63mm OR DOUBLE MAGNET WIRE
SAME DIAMETERS Ø0.40....0.56mm OR DOUBLE ALUMINIUM WIRE
SAME DIAMETERS Ø0.50...0.84. ALUMINIUM WIRE RANGE APPLIES FOR
POST TIN PLATED PART NO'S ONLY
- 2 Kontaktkammer nach Zeichnung Nr.411-18517
CONTACT CAVITY ACCORDING
DRAWING No.411-18517
- 1 Kennziffer fuer Lackdrahtbereich (10)
IDENTIFICATION NO. FOR MAGNET WIRE RANGE (10)

DIE FEED 5.0±0.08

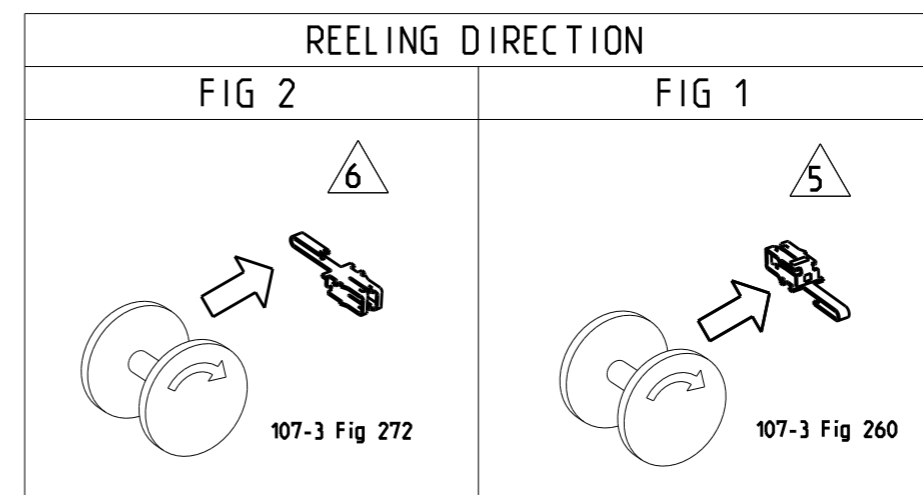


SEE SHEET 2 FOR TABLE

| | | | | | | |
|---|--|--|------------------------------|-----------|------------------------------|---------------------------|
| THIS DRAWING IS A CONTROLLED DOCUMENT. DIESES ZEICHNUNGSDOKUMENT WIRD DURCH APP. INCORPORATED KONTROLLIERT. ÄNDERUNGEN, DIE DEN TECHNISCHEN FORTSCHRITT DIENTEN, SIND VORBEHALTEN. DEN JEWEILS LETZTSTÄNDIGEN ÄNDERUNGSSTAND ERFAHREN SIE AUF ANFRAGE. | | DWN H. Ballmert 27FEB2008 | TE Connectivity | | | |
| DIMENSIONS: MASSEINHEITEN: MM | | CHK S. Zabeck 27FEB2008 | | | | |
| TOLERANCES UNLESS OTHERWISE SPECIFIED: ALLGEMEINTOLERANZEN | | APVD T. Klenner 27FEB2008 | | | | |
| | | NAME | MAG-MATE CONTACT RAST 5 D | | | |
| MATERIAL | | PRODUCT SPEC PRODUKTSPEZ. | SIZE | CAGE CODE | DRAWING NO ZEICHNUNGS-NR. | RESTRICTED TO NUR FUER |
| SEE TABLE | | APPLICATION SPEC VERARBEITUNGSSPEZ. | A3 | 00779 | G-1394431 | - |
| FINISH/OBERFLÄCHE/FARBE | | WEIGHT GEWICHT | Customer Drawing | | SCALE MASSSTAB | SHEET BLATT |
| SEE TABLE | | | /KUNDENZEICHNUNG | | 5:1 | 1 OF VON 2 |
| | | | | | | REV B3 |

THIS DRAWING IS UNPUBLISHED. RELEASED FOR PUBLICATION 2009
 © COPYRIGHT 2009 ALL RIGHTS RESERVED.

| LOC | DIST | REVISIONS | | | | | |
|-----|------|-----------|-----|-------------|------|-----|------|
| IR | - | P | LTR | DESCRIPTION | DATE | DWN | APVD |
| | | | - | SEE SHEET 1 | - | - | - |
| | | | | | | | |
| | | | | | | | |



| | | | | | |
|----------------|------------------------|----------------------------------|----------------------|------|------------------------------|
| | 6 | POST TIN PLATED POST VERZINNT | CuZn | B | 1-1394431-3 |
| | 6 | PRETINNE vorverzinnt | CuZn | B | 1-1394431-2 |
| 7 1394431-5 | 6 | PRETINNE vorverzinnt | CuNiSi | B | 1-1394431-1 |
| | 5 | POST TIN PLATED POST VERZINNT | CuZn | B | 1394431-3 |
| | 5 | PRETINNE vorverzinnt | CuZn | B | 1394431-2 |
| | 5 | PRETINNE vorverzinnt | CuNiSi | B | 1394431-1 |
| LOOSE PIECE PN | REMARKS Bemerkungen | SURFACE Oberflaeche | MATERIAL Material | REV. | PART NUMBER Bestellnummer |

| | | | | |
|--|--|--|--|--|
| THIS DRAWING IS A CONTROLLED DOCUMENT. | | DWN SENTHIL 24 JAN 2013 | | |
| | | CHK RAJENDRA 24 JAN 2013 | | |
| | | APVD T.KLENNER 24 JAN 2013 | | |
| DIMENSIONS: mm | | TOLERANCES UNLESS OTHERWISE SPECIFIED: 0 PLC ±0.2 1 PLC ±0.2 2 PLC ±0.2 3 PLC ±0.2 4 PLC ±0.2 ANGLES ±2° | | NAME MAG-MATE CONTACT RAST 5 D |
| MATERIAL | | FINISH | | PRODUCT SPEC - APPLICATION SPEC - WEIGHT - |
| SEE TABLE | | SEE TABLE | | SIZE A3 CAGE CODE 00779 DRAWING NO C-1394431 RESTRICTED TO - Customer Drawing SCALE 5:1 SHEET 2 OF 2 REV B3 |