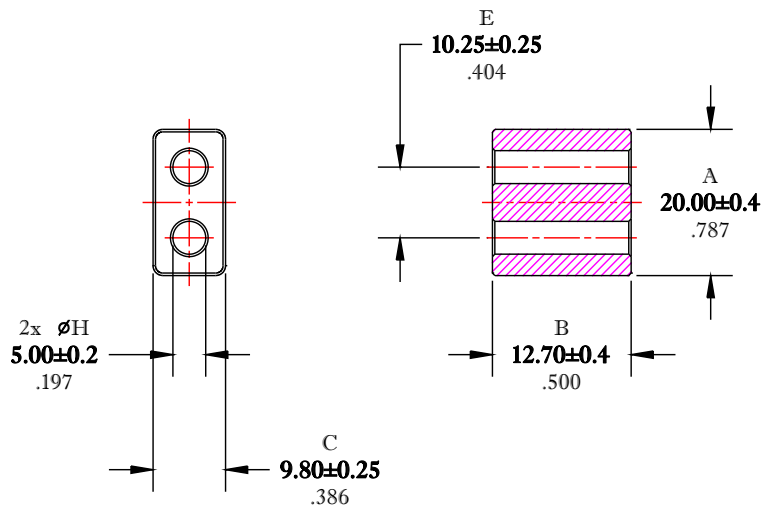


\*\* Not all features are shown in this drawing. For more detailed information, please contact your Fair-Rite representative.

UNCONTROLLED ~CATALOG~ DRAWING

SIZE	PART NO.	REV.
B	2861014302	~



DIMENSIONS  
**BOLD NUMBERS ARE IN MILLIMETERS**  
 LIGHT NUMBERS ARE IN INCHES

ELECTRICAL SPECIFICATIONS			
IMPEDANCE @ 250 MHz E4991A/16092A	$A_L$ (nH) @ 10 kHz	$\tan \delta/\mu$ @ 1 MHz	$\tan \delta/\mu_i$ @ 10 MHz
175 Min.	300 Min.	$\leq 75 \times 10^{-6}$	$\leq 350 \times 10^{-6}$
N=1T-2H, #22 AWG, WL=2"		N=5T-2H #26 AWG	

NOTES:

1 - BURNISH TO BREAK SHARP EDGES.

FR# 61

FAIR-RITE PRODUCTS CORP.				
TITLE MULTI-APERTURE CORE				
DRAWN BY D. FOOTE	DATE 3/23/2020	SIZE B	PART NO. 2861014302	REV. ~
CHKD BY		APPRVD BY	SCALE NONE	SHEET 1 of 1