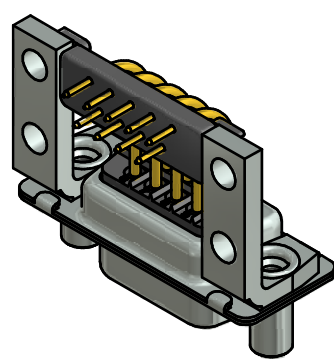


- NOTES:**
- METALSHELLS: STEEL; min. 315µm Tin over 40-8µm NICKEL
  - INSULATORS: PBT GF UL 94 V-0, BLACK
  - CONTACTS: COPPER ALLOY; PLATING (SEE PART NO.):
    - PLEASE ADD A for GOLD FLASH over NICKEL (PREFERRED TYPE)
    - PLEASE ADD B for 20µm HARD GOLD over min. 50µm NICKEL
    - PLEASE ADD C for 30µm HARD GOLD over min. 50µm NICKEL
  - METAL BRACKETS: STEEL; min. 320µm TIN over 80µm NICKEL
  - THREADED LOCKS: COPPER ALLOY; min. 200µm TIN over 80µm NICKEL
  - FIXING-PLATE: PBT GF UL 94 V-0; BLACK
  - MAXIMUM TORQUE VALUE FOR THREAD: 6 in.LB
  - CONNECTOR IS PART MARKED: 164□19679X CONEC ABC (see note 3)



Directive 2002/95/EC RoHS compliant

THIS DRAWING MAY NOT BE COPIED OR REPRODUCED IN ANY WAY, AND MAY NOT BE PASSED ON TO A THIRD PARTY WITHOUT WRITTEN PERMISSION. OWNERSHIP AND COPYRIGHT OF CONEC GmbH DO NOT ALTER CAD DRAWING BY HAND	tolerance		dim. in mm		scale: 2:1 (5:1)	
					material: SEE NOTES	
	date	name	title:			
	drawn 11.04.2014	Heinrich	<b>D-SUB FEMALE 90°</b> 9pos. SOLDER PIN ANGLED 0.590inch with metal bracket, threaded lock, fixing plate			
	appd. 11.04.2014	Lehmenkühler				
norm		dwg no:		DIN-A3		
d-old		16K1A3436		sh: 1		
rev. a	Original	part no: 164□19679X (see note 3)				
rev.	description	date	name			