

## UEGM 40/1

Order No.: 2792112

<http://eshop.phoenixcontact.de/phoenix/treeViewClick.do?UID=2792112>

Electronic housing, for PCB insertion, fully equipped with 3 screw or 6  
tab connections per side

Commercial data	
EAN	4017918072582
Pack	10 pcs.
Customs tariff	85369010
Weight/Piece	0.0741 KG
Catalog page information	Page 561 (CC-2009)

### Product notes

WEEE/RoHS-compliant since:  
01/01/2003



[http://  
www.download.phoenixcontact.com](http://www.download.phoenixcontact.com)  
Please note that the data given  
here has been taken from the  
online catalog. For comprehensive  
information and data, please refer  
to the user documentation. The  
General Terms and Conditions of  
Use apply to Internet downloads.

Technical data	
<b>General</b>	
Housing type	Complete housing
Housing material	polyamide (PA 6.6)
Color	green

**Dimensions / positions**

Length	79 mm
Width	40 mm
Number of positions	6
Pitch	5 mm

**Technical data**

Ambient temperature (operation)	-40 °C ... 105 °C
Connection in acc. with standard	CUL
Nominal voltage $U_N$	300 V
Nominal current $I_N$	10 A
AWG/kcmil	30-12
Indicator1	CUL1
Inflammability class acc. to UL 94	V0
Power dissipation at 20°C in the horizontal mounting position	5.2 W 11.2 W

**Connection data**

Conductor cross section solid min.	0.2 mm <sup>2</sup>
Conductor cross section solid max.	4 mm <sup>2</sup>
Conductor cross section stranded min.	0.2 mm <sup>2</sup>
Conductor cross section stranded max.	2.5 mm <sup>2</sup>
Conductor cross section AWG/kcmil min.	24
Conductor cross section AWG/kcmil max	12
Stripping length	8 mm

**Certificates / Approvals**

Certification

CUL, GOST, UL

**CUL**

Nominal voltage $U_N$	300 V
Nominal current $I_N$	10 A
AWG/kcmil	30-12

**UL**

Nominal voltage $U_N$	300 V
Nominal current $I_N$	10 A
AWG/kcmil	30-12

**Accessories**

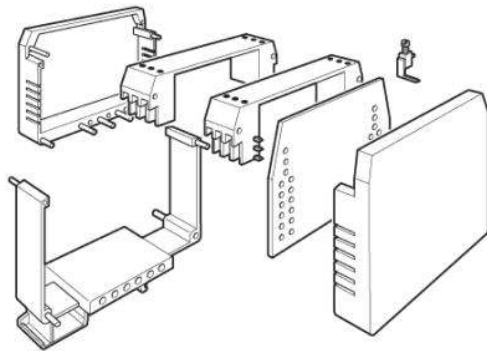
Item	Designation	Description
------	-------------	-------------

**Bridges**

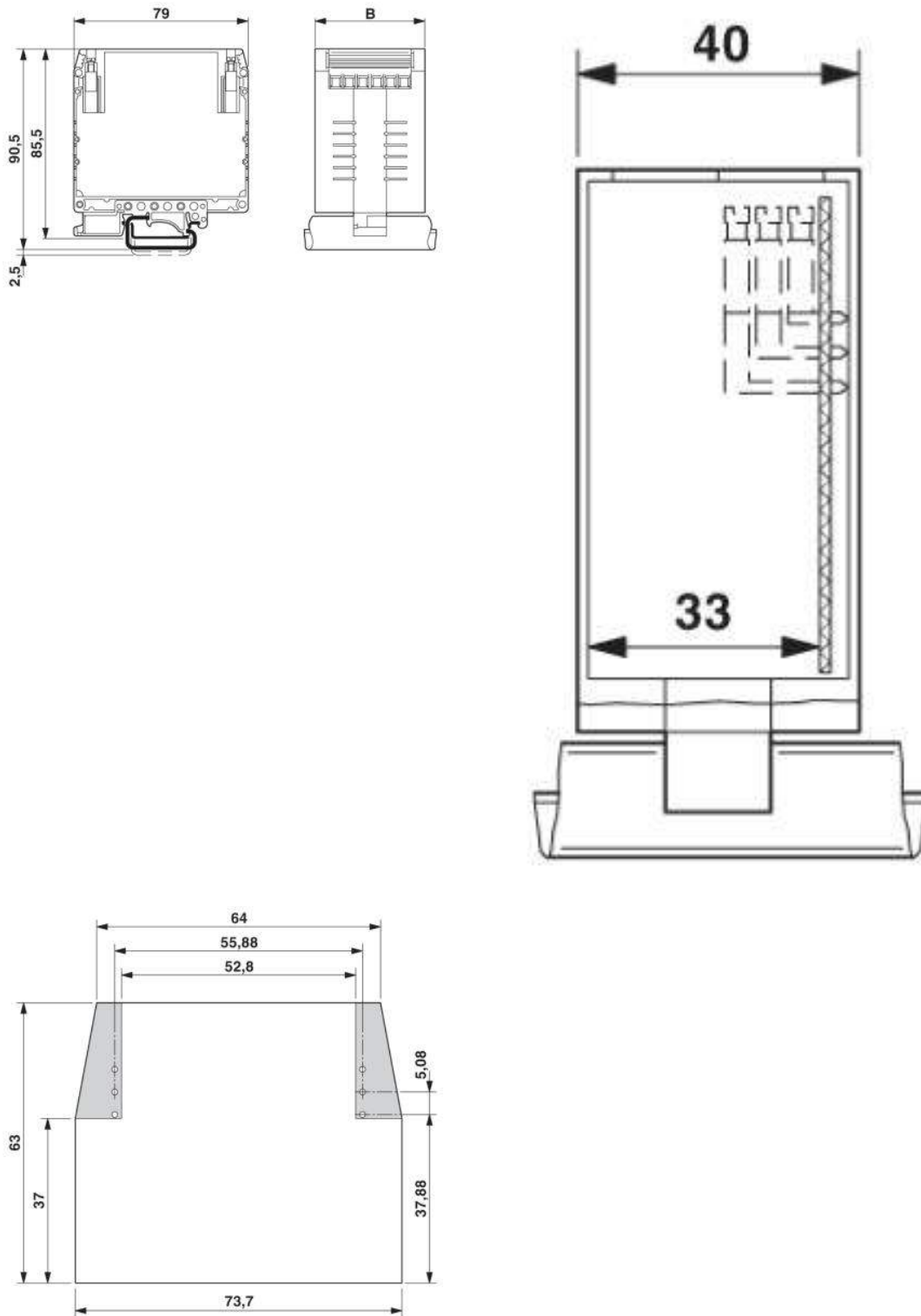
2820929	DB 50- 90 GY	Wire bridge, Color: gray
---------	--------------	--------------------------

**Diagrams/Drawings**

Explosion drawing

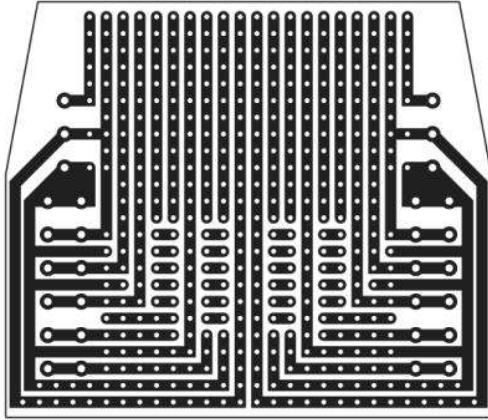


Dimensioned drawing



Schematic diagram

---



**Address**

PHOENIX CONTACT Inc., USA  
586 Fulling Mill Road  
Middletown, PA 17057, USA  
Phone (800) 888-7388  
Fax (717) 944-1625  
<http://www.phoenixcon.com>



© 2010 Phoenix Contact  
Technical modifications reserved;