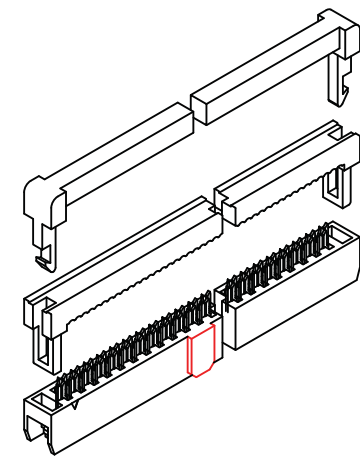
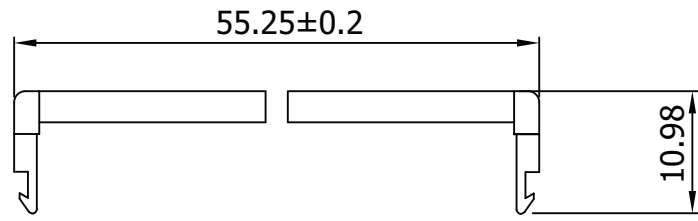
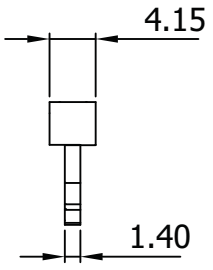


A



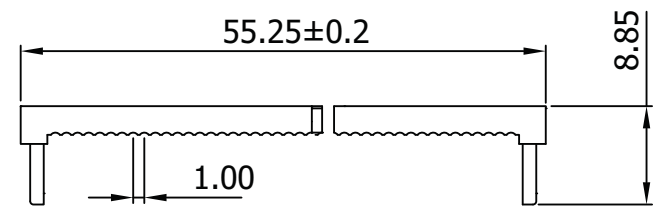
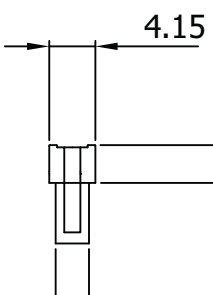
A

B

I.D.C SOCKET DUAL-ROW

SR

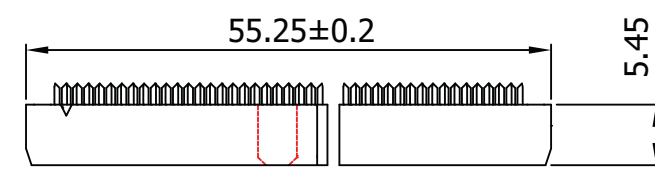
C



Material:

- Insulator: P.B.T. 30% Glass Fiber, UL 94V-0
- Contact Material: Phosphor Bronze, Gold flash over Nickel

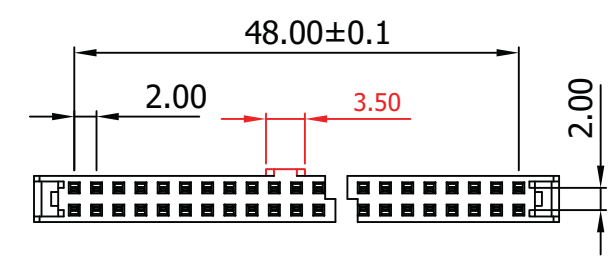
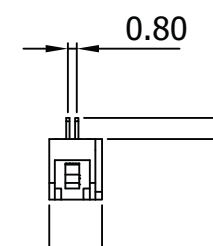
D



Electrical:

- Current Rating: 1Amp DC
- Insulation Resistance: 1,000MΩ Min.
- Dielectric Withstanding: 500V AC
- Operating Temperature: -55°C ~ +105°C

E



Unit: MM±0.30MM

F



G

Scale	1:1							Name	Item No.
TOLERANCE						Drawn	10.19.11	Chappell	AWP2-50-7241-T-R
X.X	±0.40					Approved			
X.XX	±0.25								
X.XXX	±0.15								
Angle	±3°								
								Drawing No.	
								rev00	
								Replace	
								Sheet	
				Modification		Date		Name	



H