



User's Guide

NHD-TS-12864CRNA#

TOUCH PANEL

Tel: (847) 844-8795 Fax: (847) 844-8796

Newhaven Display International
2511 Technology Drive, #101
Elgin, IL 60124

May 28, 2009

RECORDS OF REVISION

DOC. FIRST ISSUE

VERSION	DATE	REVISED PAGE NO.	SUMMARY
0	2007/8/9		First issue

1. General Specification

ITEM	STANDARD VALUE	UNIT
Outline dimension	71.35±0.3(L) x55.00±0.3(W) x1.1±0.1(T)	mm
View area	61.60 (L) x47.20 (W)	mm
Active area	59.00 (L) x 44.20(W)	mm

2. Absolute Maximum Ratings

ITEM	SYMBOL	MIN.	TYP.	MAX.	UNIT
Operating Temperature	T _{OP}	0	—	+50	°C
Storage Temperature	T _{ST}	-20	—	+70	°C
Operating temperature		20		85	%RH
Storage temperature		10		90	%RH
Light transmission			80		%

3. Reliability

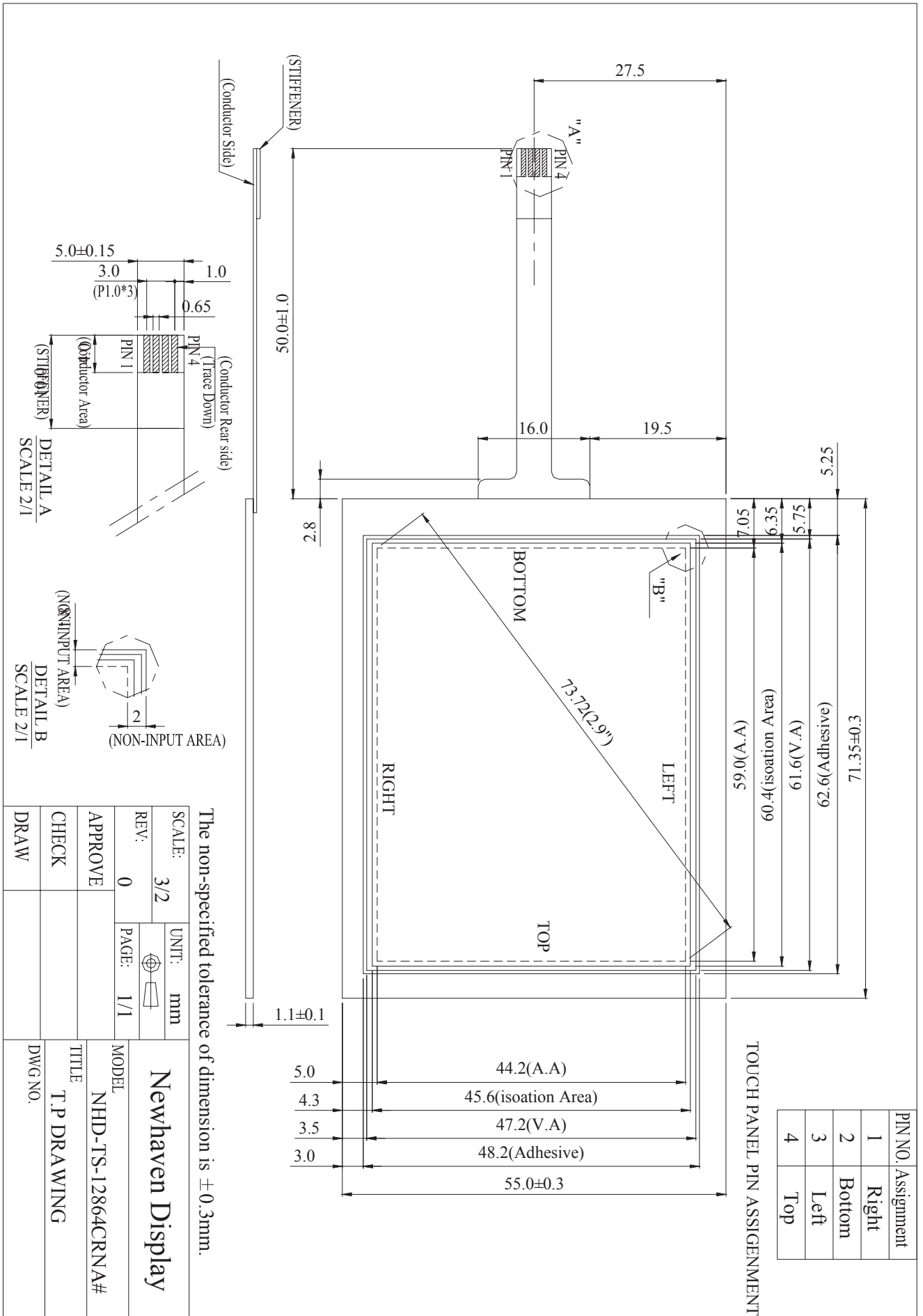
■ Content of Reliability Test

Environmental Test			
Test Item	Content of Test	Test Condition	Applicable Standard
High Temperature storage	Endurance test applying the high storage temperature and operating test .	70°C 120hrs	—
Low Temperature storage	Endurance test applying the high storage temperature for a long time.	-20°C 120hrs	—

***The test of above being finished, touch screen must satisfy the specification as below:

Resistance between leads :

- (1) Film : 570~920 Ohm , Glass: 220 ~ 330 Ohm
- (2) Linearity : Less than 1.5%
- (3) Insulation resistance: 10M Ohm or more.



LCD Panel Estimate Feedback Sheet

Panel Item Number : _____

1、Panel Specification :

1. Panel Type : Pass NG , _____
2. View Direction : Pass NG , _____
3. Numbers of Dots(Icon) : Pass NG , _____
4. Operating Temperature : Pass NG , _____
5. Storage Temperature : Pass NG , _____
6. Others : _____

2、Mechanical Specification :

1. Dots(Icon) Size : Pass NG , _____
2. VA Size : Pass NG , _____
3. AA Size : Pass NG , _____
4. Outline Dimension : Pass NG , _____
5. Others : Pass NG , _____

3、Summary :

Sales signature : _____

Customer Signature : _____

Date : / / _____