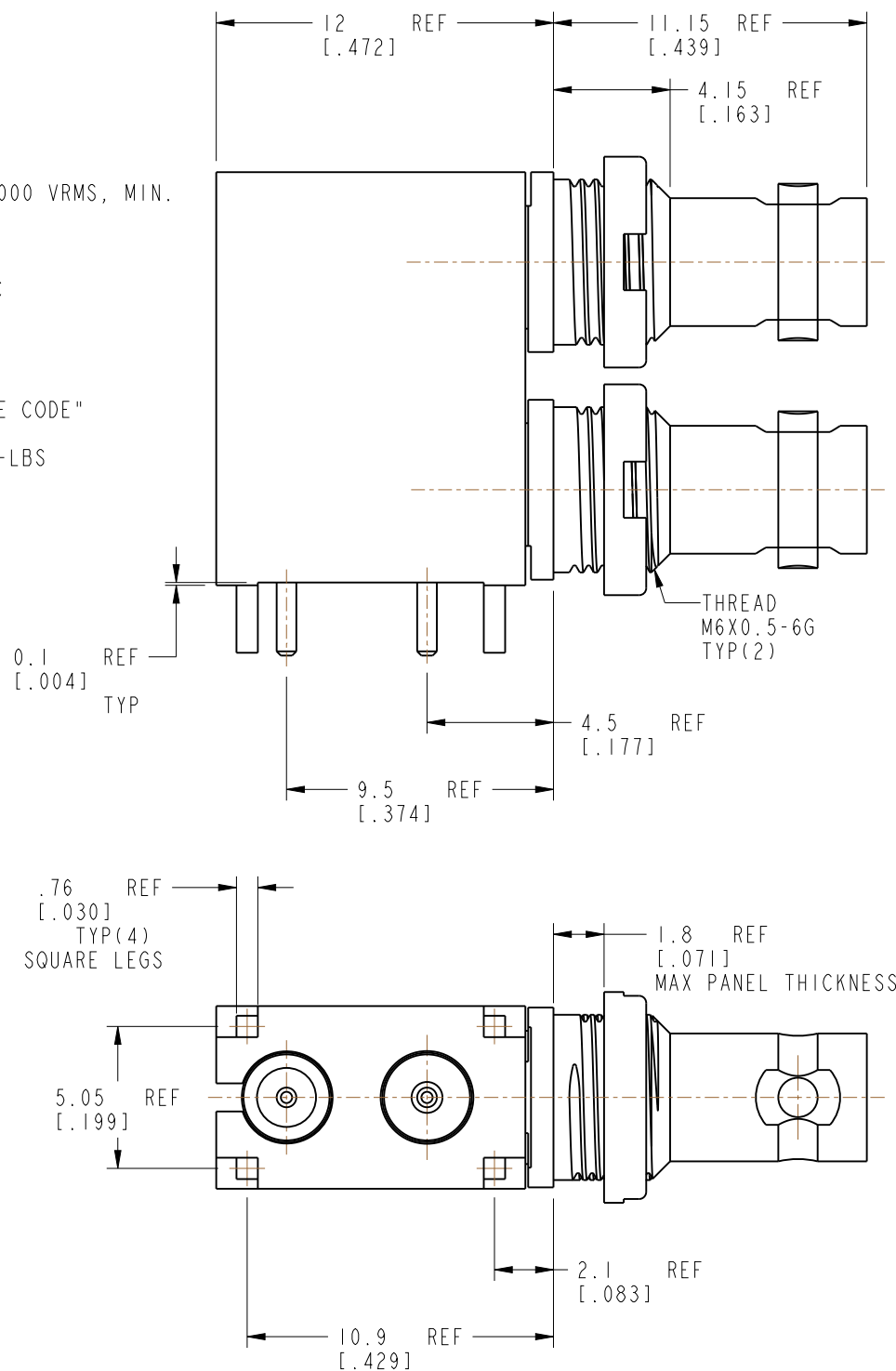


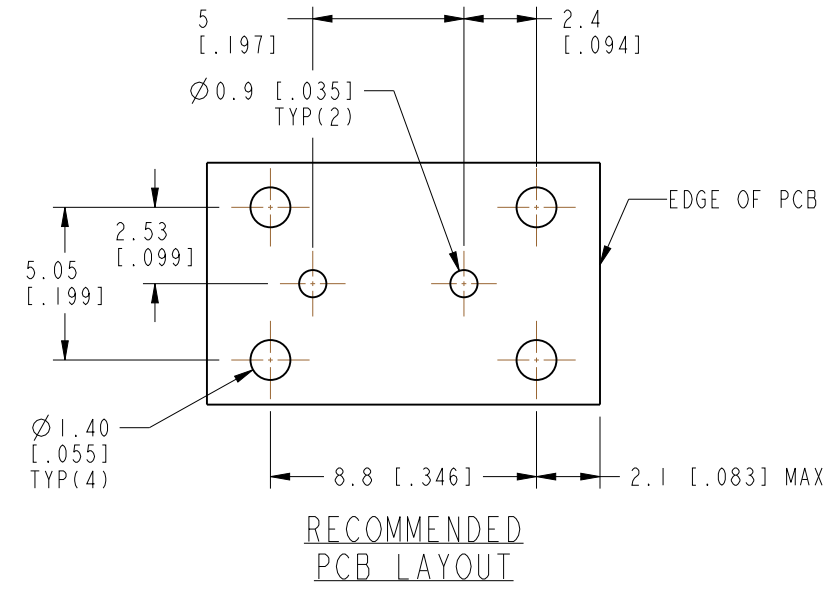
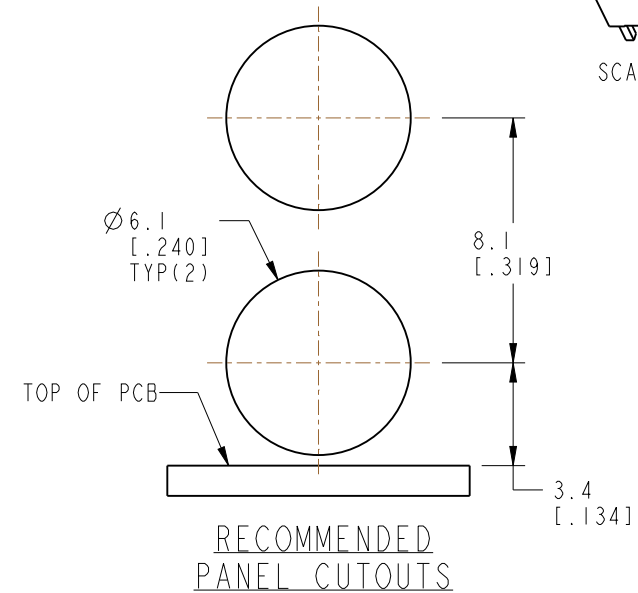
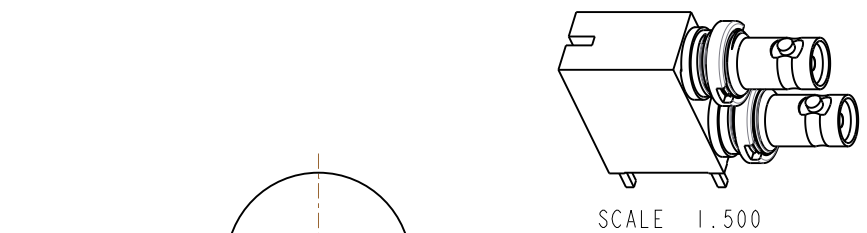
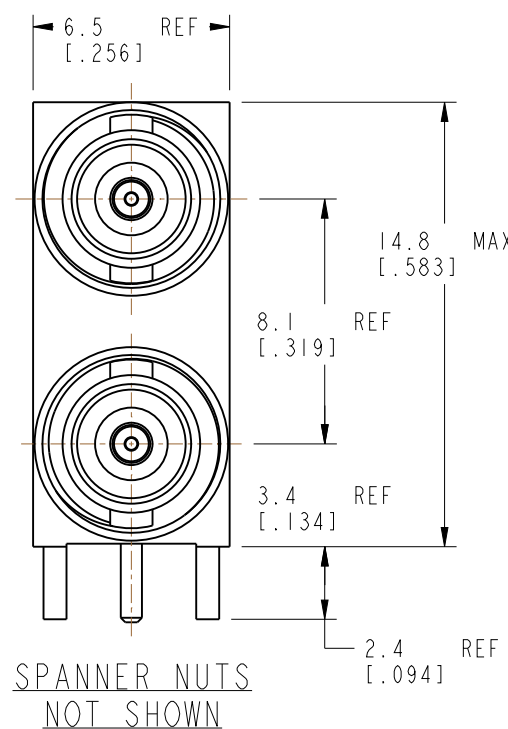
NOTES:

1. MATERIALS AND FINISHES:
 - HOUSING - BRASS, GOLD PLATING
 - BODIES - BRASS, ELECTROLESS NICKEL PLATING
 - CONTACTS - BERYLLIUM COPPER, GOLD PLATING
 - INSULATORS - PTFE, NATURAL
 - SPANNER NUTS - BRASS, NICKEL PLATING
2. ELECTRICAL:
 - A. IMPEDANCE: 75 OHM
 - B. FREQUENCY RANGE: DC-18 GHz
 - C. RETURN LOSS: 20 dB, MAX @ DC-6 GHz
15 dB, MAX @ 6-12 GHz
 - D. DIELECTRIC WITHSTANDING VOLTAGE: 1000 VRMS, MIN.
3. MECHANICAL:
 - A. DURABILITY: 500 CYCLES MIN.
 - B. TEMPERATURE RANGE: -65° C TO 165° C
4. PACKAGING:
 - A. QUANTITY: SINGLE PACK
 - B. MARKING: PACKAGING TO BE MARKED
"AMPHENOL RF, 34-1131-12G, AND DATE CODE"
5. RECOMMENDED SPANNER NUT TORQUE: 5-7 IN-LBS



THIRD ANGLE PROJ.

REVISIONS				
REV	DESCRIPTION	DATE	ECN	APPR
A	RELEASE TO MFG.	30-Mar-20	14801	EH
B	ADDED LEG DIMENSION 0.76 REF	28-MAR-22	16193	CC



CUSTOMER OUTLINE DRAWING
ALL OTHER SHEETS ARE FOR INTERNAL USE ONLY

UNLESS OTHERWISE SPECIFIED, DIMENSIONS ARE IN METRIC AND TOLERANCES ARE: <0.5mm ±0.05mm 0.5 - 6mm ±0.1mm 6 - 30mm ±0.2mm 30 - 120mm ±0.3mm ANGLES ±1°	MATERIAL	DRAWN	DATE	TITLE	Amphenol RF www.amphenolrf.com
	REFERENCE	STAR	11-Apr-20	HD-BNC JACK PCB THROUGH HOLE DUAL PORT	
NOTICE - These drawings, specifications, or other data (1) are, and remain the property of Amphenol corp. (2) must be returned upon request; and (3) are confidential and not to be disclosed to any person other than those to whom they are given by Amphenol Corp. the furnishing of these drawings, specifications, or other data by Amphenol Corp., or to any other person to anyone for any purpose is not to be regarded by implication or otherwise in any manner licensing, granting rights to permitting such holder or any other person to manufacture, use or sell any product, process or design, patented or otherwise, that may in any way be related to or disclosed by said drawings, specifications, or other data.	EAR# 8552	ENGINEER	DATE	SCALE: 4.0:1.0	DRAWING NO. 34-1131-12G ITEM NO. 34-1131-12G PART NO. 34-1131-12G
	REF: ---	B. WYMAN	02-Aug-18	SHEET 2 OF 2	
CONFIGURATION LEVEL: In Work	APPROVED	S. HSIEH	DATE	DWG SIZE	REV
FINISH	---	---	21-Apr-20	B	B