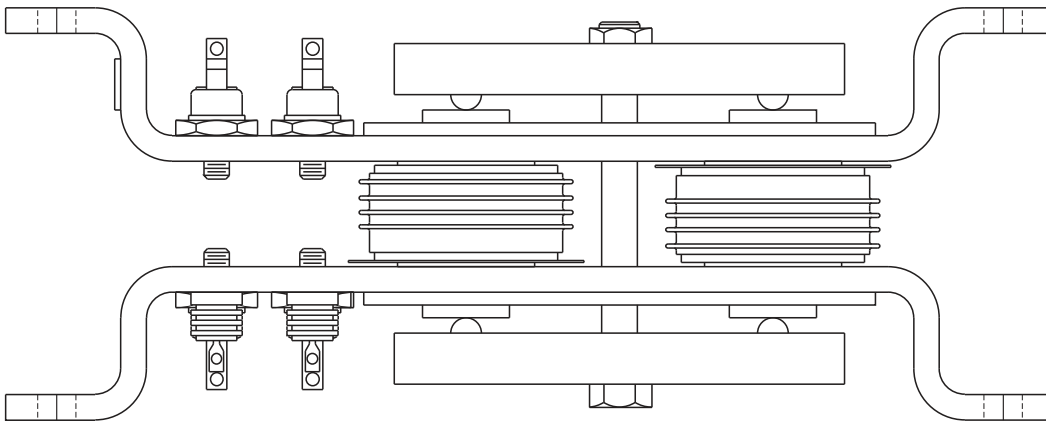
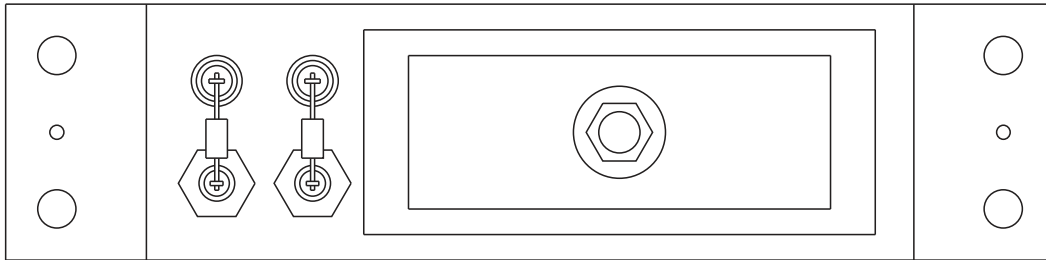


**PPI-600V**

**PARALLEL PATH ISOLATOR**

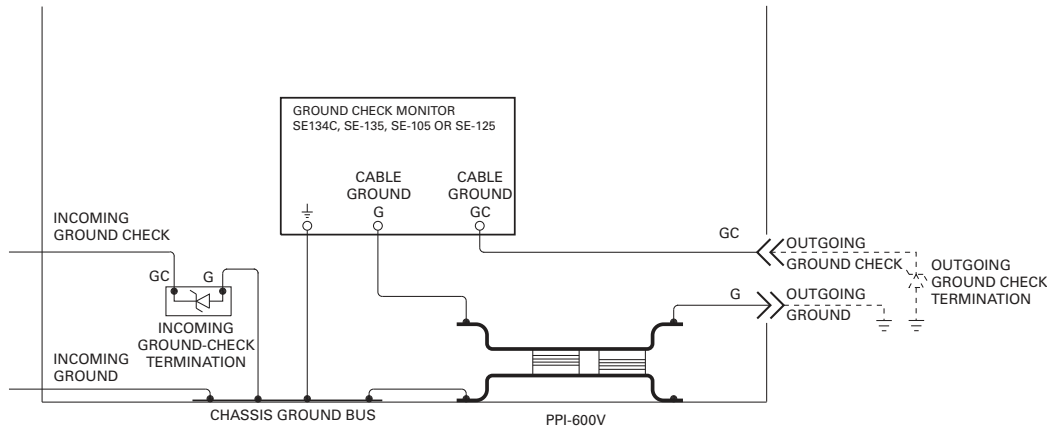
OCTOBER 13, 2011

REVISION 0



The PPI-600V is a ground-wire device that allows a trailing-cable ground to be monitored independently of the parallel ground path created when trailing-cable-fed equipment is in contact with the earth. It also allows a trailing-cable ground to be monitored in the presence of stray dc and it prevents inter-machine arcing caused by the voltages induced in the cables.

**TYPICAL APPLICATION**



**NOTES:**

1. PARALLEL PATH ISOLATOR IS NOT POLARIZED. EITHER FLANGE CAN BE CONNECTED TO CHASSIS.
2. THE OUTGOING GROUND MUST BE ISOLATED FROM THE CHASSIS GROUND BUS. IF A FLANGE-MOUNTED RECEPTACLE IS USED, VERIFY THAT THE FLANGE IS ISOLATED FROM THE GROUND PIN, AND
  - USE A MATING PLUG WITH A NON-METALLIC HOUSING, OR
  - ISOLATE THE FLANGE FROM THE CHASSIS IF THE MATING PLUG HAS A METALLIC HOUSING.
3. CABLE PLUGS AND RECEPTACLES WITH GROUNDED METAL HOUSINGS MUST BE ISOLATED FROM EARTH TO PREVENT PARALLEL GROUND PATHS.
4. FOR SYSTEMS ABOVE 600 VAC, CONNECT A V131DA40 MOV ACROSS THE PPI-600V.

**TECHNICAL SPECIFICATIONS**

Dimensions:

Height.....102 mm (4.0")  
 Width.....235 mm (9.3")  
 Depth.....64 mm (2.5")

Shipping Weight.....11.5 lb (5.5 kg)

Off-State Resistance .....>20 kΩ @ 125°C  
 and V < 10.0 V

On-State Voltage .....< 2 V @ 25°C  
 and I < 2000 A

Minimum Trigger Voltage .....20 V

Maximum Trigger Voltage .....25 V

Clamp Rating:

1 Cycle .....15 kA  
 10 second .....2.5 kA

Failure Mode.....Short Circuit

**DISCLAIMER**

Specifications are subject to change without notice. Littelfuse Startco is not liable for contingent or consequential damages, or for expenses sustained as a result of incorrect application, incorrect adjustment, or a malfunction.