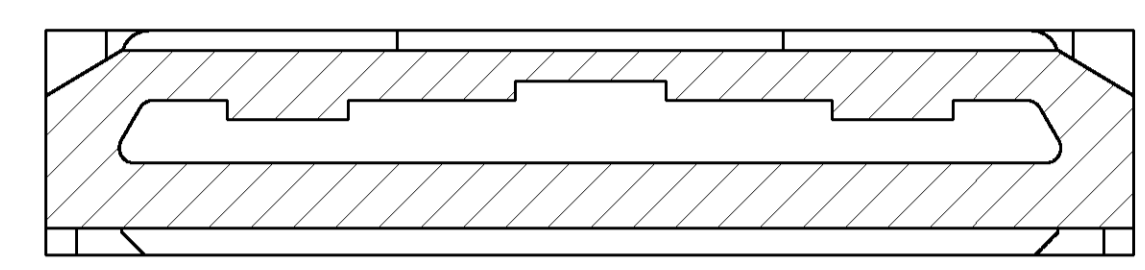
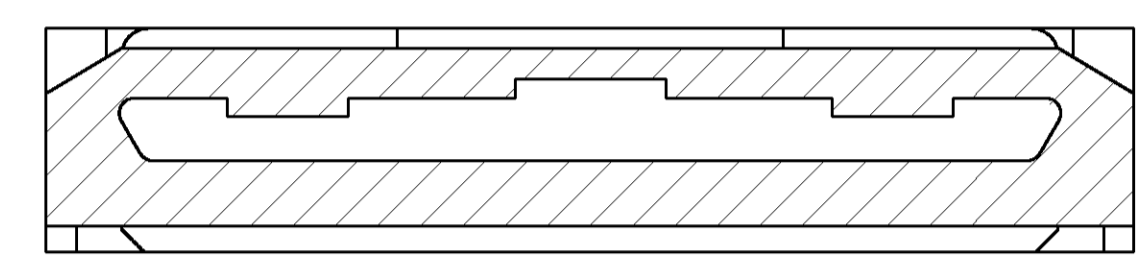


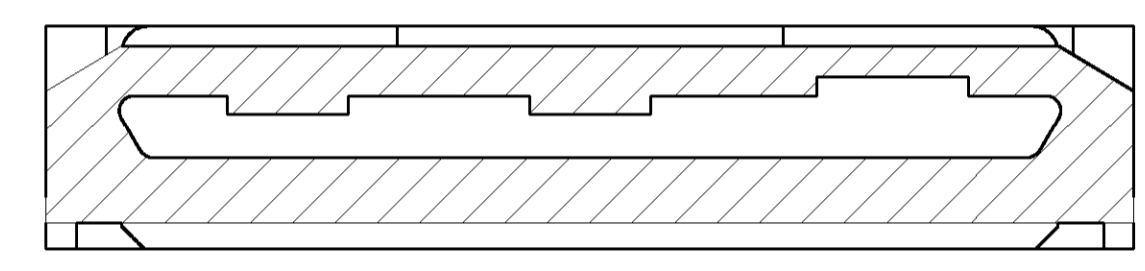
558666-5  
KEY 5  
TBD



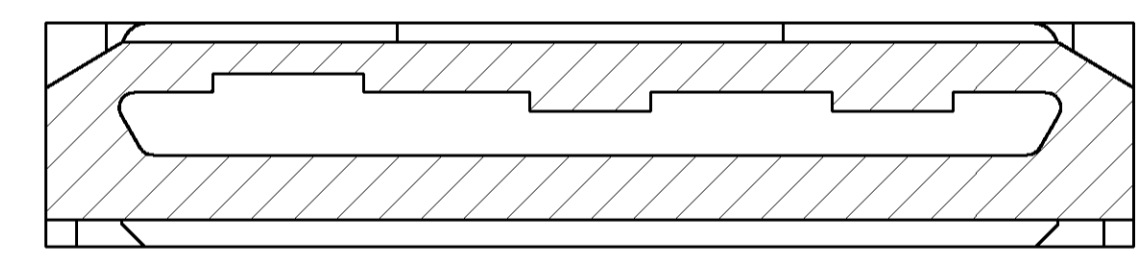
558666-4  
KEY 4  
LAN



558666-3  
KEY 3  
MODEM

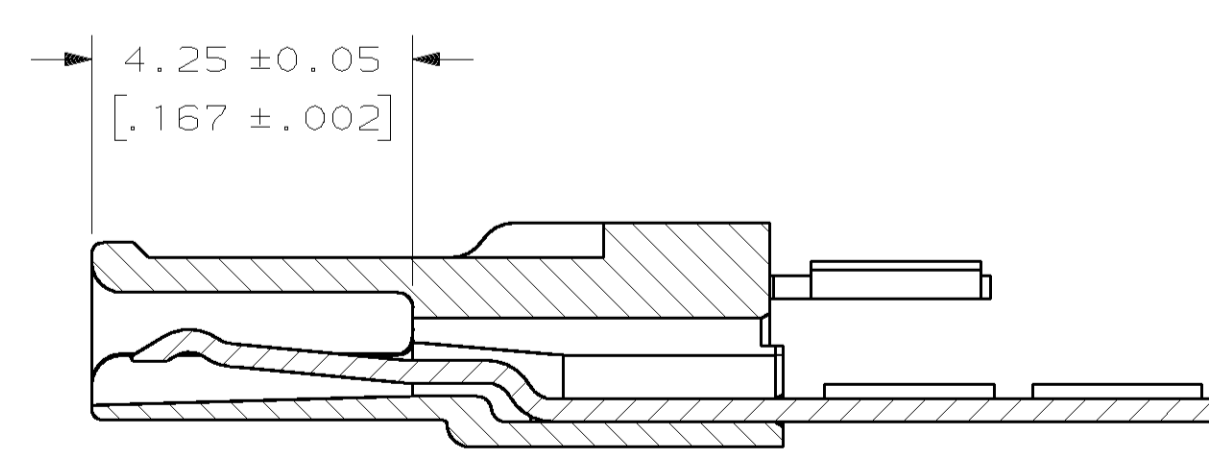


558666-2  
KEY 2  
MULTI-FUNCTION



558666-1  
KEY 1  
CLOSED

KEYING OPTIONS  
SOME DETAIL OMITTED FOR CLARITY



SECTION A-A

△ HOUSING: NYLON MOLDING COMPOUND, BLACK.  
 TERMINALS: 0.3[.012] THICK PH05 BRONZE.  
 PLATING: NICKEL UNDERPLATE OVER ENTIRE TERMINAL. 2.54μm[.000100] MINIMUM THICKNESS.  
 LOCALIZED PLATING AREA: 0.254μm[.000010] THICK GOLD OVER 1.016μm[.000040] MINIMUM THICK PALLADIUM NICKEL (OVER 0.051μm[0.000002] MINIMUM THICK GOLD WHEN REQUIRED BY PROCESS CONDITIONS).  
 2. 558666-1 KEY1 (CLOSED) AS SHOWN.

KEY 5	558666-5
KEY 4	558666-4
KEY 3	558666-3
KEY 2	558666-2
KEY 1	558666-1
DESCRIPTION	PART NUMBER

THIS DRAWING IS A CONTROLLED DOCUMENT.		DWN RK Barker	10/31/94	AMP Incorporated Harrisburg, PA 17105-3608
DIMENSIONS: mm [INCHES]		CHK B. FOX	10/31/94	
TOLERANCES UNLESS OTHERWISE SPECIFIED:		DWG D. WOLLA	10/31/94	
0 PLC ±.01 1 PLC ±.02 2 PLC ±.03 3 PLC ±.04 4 PLC ±.05 ANGLES ±.01		NAME WOLLA	10/31/94	
MATERIAL	FINISH	PRODUCT SPEC	APPLICATION SPEC	RESTRICTED TO
		SIZE	CAGE CODE	DRAWING NO
		WEIGHT	A1 00779	558666
CUSTOMER DRAWING		SCALE	10:1	SHEET 1 OF 1 REV C