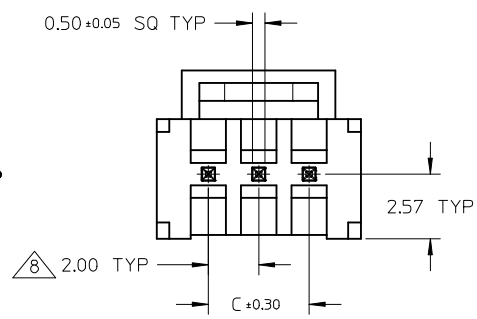
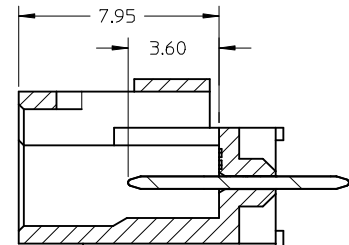
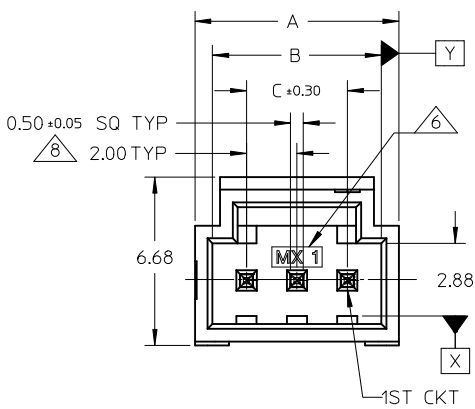
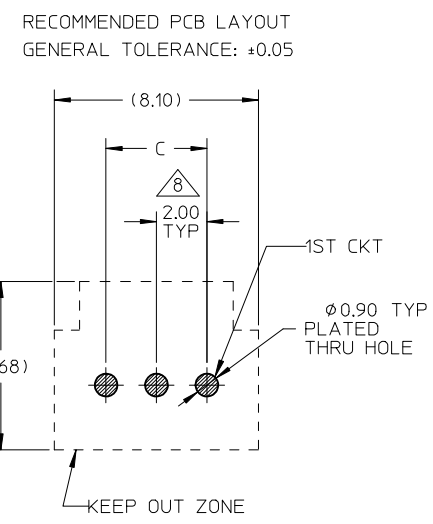
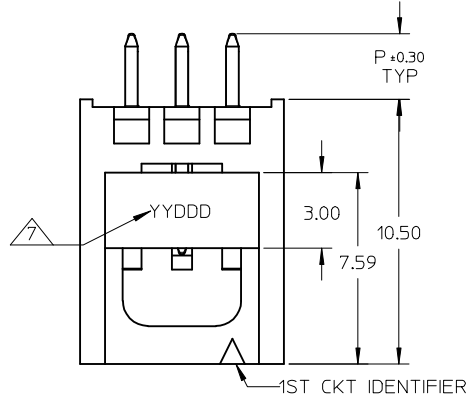


10 9 8 7 6 5 4 3 2 1

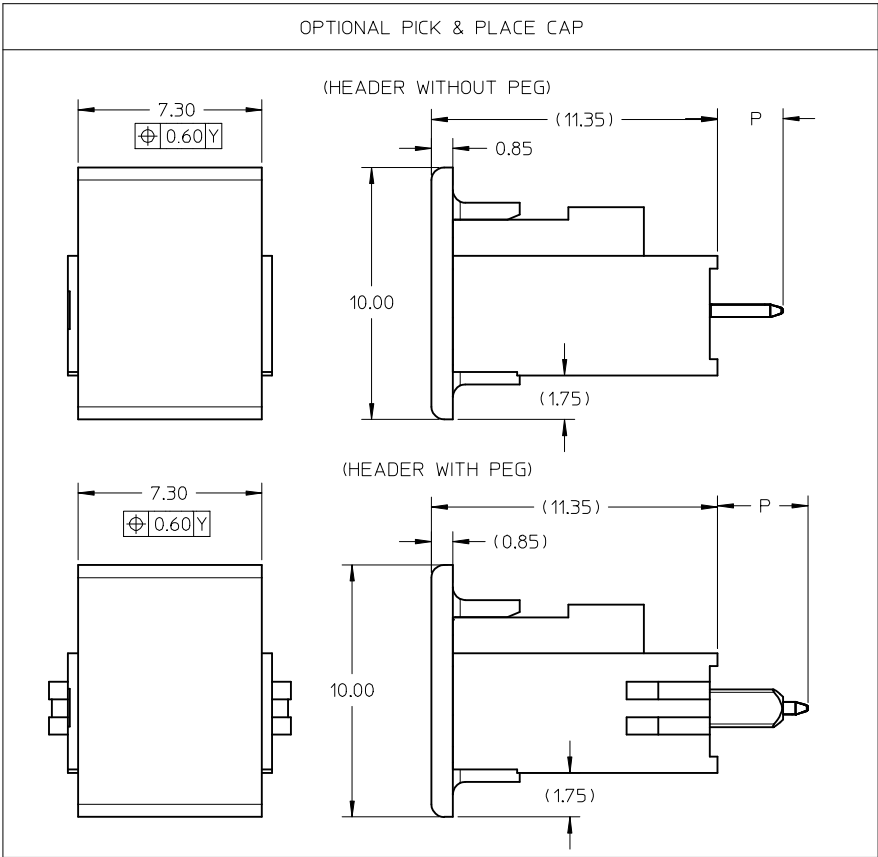
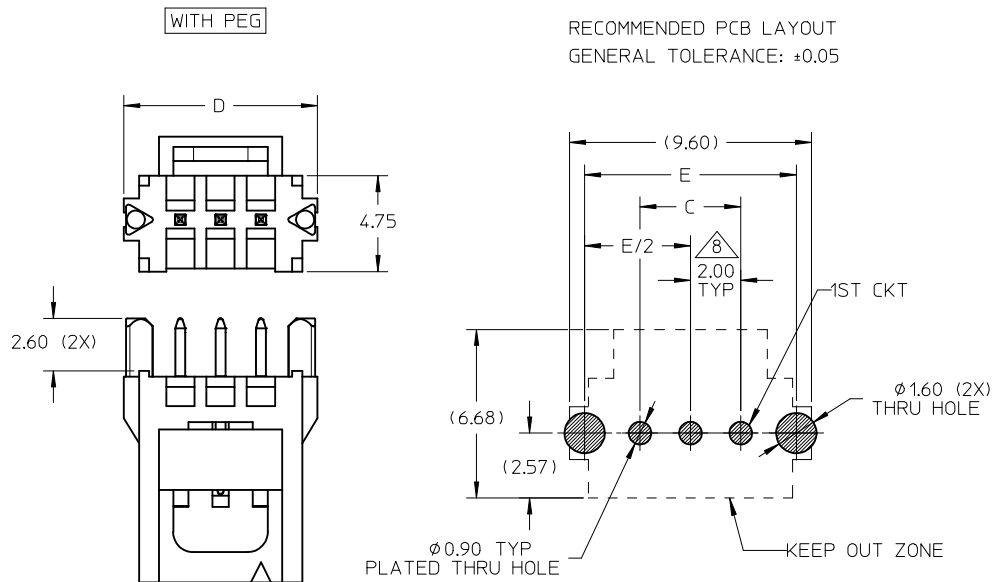
CKT SIZE	DIMENSION				
	A	B	C	D	E
2	6.10	4.70	2.00	7.60	6.40
3	8.10	6.70	4.00	9.60	8.40
4	10.10	8.70	6.00	11.60	10.40
5	12.10	10.70	8.00	13.60	12.40
6	14.10	12.70	10.00	15.60	14.40
7	16.10	14.70	12.00	17.60	16.40
8	18.10	16.70	14.00	19.60	18.40
9	20.10	18.70	16.00	21.60	20.40
10	22.10	20.70	18.00	23.60	22.40



- NOTES:
- MATERIAL:  
HOUSING: LIQUID CRYSTALLINE POLYMERS (LCP), GLASS FILLED, UL94V-0, BLACK.  
PIN: COPPER ALLOY, 0.50MM SQ  
PICK & PLACE CAP: POLYAMIDE (PA), GLASS FILLED, UL94V-0, BLACK.
  - PLATING: SEE TABLE.
  - PRODUCT SPECIFICATION: PS-151062-0001.
  - PACKAGING SPECIFICATION: PK-151062-0001.
  - TO BE MATED WITH MOLEX RECEPTACLES SERIES: 151100.
  - MANUFACTURING ID & CAVITY ID SHALL BE LOCATED APPROXIMATELY AS SHOWN.
  - DATE CODE: YYDDD IS LOCATED APPROXIMATELY AS SHOWN.
  - PITCH TOLERANCE SHALL BE NON ACCUMULATED.

<b>REVISE DATECODE</b> EC NO: S2016-0127 DRWN:FC500 CHKD:CGOH APPR:KHLIM	<b>DESCRIPTION</b> $F_A=0$ $F_C=0$ $F_B=0$	<b>GENERAL TOLERANCES (UNLESS SPECIFIED)</b>		<b>DIMENSION STYLE</b> MM ONLY	<b>SCALE</b> NTS	<b>DESIGN UNITS</b> METRIC	THIRD ANGLE PROJECTION																	
		<table border="1"> <thead> <tr> <th></th> <th>mm</th> <th>INCH</th> </tr> </thead> <tbody> <tr> <td>4 PLACES</td> <td><math>\pm</math> ---</td> <td><math>\pm</math> ---</td> </tr> <tr> <td>3 PLACES</td> <td><math>\pm</math> ---</td> <td><math>\pm</math> ---</td> </tr> <tr> <td>2 PLACES</td> <td><math>\pm 0.20</math></td> <td><math>\pm</math> ---</td> </tr> <tr> <td>1 PLACE</td> <td><math>\pm</math> ---</td> <td><math>\pm</math> ---</td> </tr> <tr> <td>0 PLACE</td> <td><math>\pm</math> ---</td> <td><math>\pm</math> ---</td> </tr> </tbody> </table>		mm	INCH	4 PLACES	$\pm$ ---	$\pm$ ---	3 PLACES	$\pm$ ---	$\pm$ ---	2 PLACES	$\pm 0.20$	$\pm$ ---	1 PLACE	$\pm$ ---	$\pm$ ---	0 PLACE	$\pm$ ---	$\pm$ ---	DRAWN BY: FCS00 DATE: 2014/12/16	<b>TITLE</b> SALES DRAWING PCB HEADER, VERTICAL TH SINGLE ROW MILLIGRID		
			mm	INCH																				
		4 PLACES	$\pm$ ---	$\pm$ ---																				
3 PLACES	$\pm$ ---	$\pm$ ---																						
2 PLACES	$\pm 0.20$	$\pm$ ---																						
1 PLACE	$\pm$ ---	$\pm$ ---																						
0 PLACE	$\pm$ ---	$\pm$ ---																						
DRAFT WHERE APPLICABLE MUST REMAIN WITHIN DIMENSIONS	APPROVED BY: KHLIM DATE: 2015/07/02	<b>DOCUMENT NO.</b> SD-151063-0001																						
<b>REV</b> 4	<b>SIZE</b> A3	<b>THIS DRAWING CONTAINS INFORMATION THAT IS PROPRIETARY TO MOLEX INCORPORATED AND SHOULD NOT BE USED WITHOUT WRITTEN PERMISSION</b>			<b>SHEET NO.</b> 1 OF 3																			

9 8 7 6 5 4 3 2 1



REVISE DATECODE EC NO: S2016-0127 DRWN:FCS00 CHKD:CGOH APPR:KHL IM	DESCRIPTION 2015/08/13 2015/09/18 2015/09/18	QUALITY SYMBOLS	GENERAL TOLERANCES (UNLESS SPECIFIED)		DIMENSION STYLE MM ONLY		SCALE NTS	DESIGN UNITS METRIC	THIRD ANGLE PROJECTION	
		$\nabla_A = 0$ $\nabla_C = 0$ $\nabla_P = 0$	mm    INCH 4 PLACES ± --- ± --- 3 PLACES ± --- ± --- 2 PLACES ± 0.20 ± --- 1 PLACE ± --- ± --- 0 PLACE ± --- ± ---	DRAWN BY FCS00	DATE 2014/12/16	TITLE SALES DRAWING PCB HEADER, VERTICAL TH SINGLE ROW MILLIGRID				
			ANGULAR ± 3 °	CHECKED BY	DATE	DOCUMENT NO. SD-151063-0001				
			DRAFT WHERE APPLICABLE MUST REMAIN WITHIN DIMENSIONS	APPROVED BY KHL IM	DATE 2015/07/02	SHEET NO. 2 OF 3				
4	REV		SEE TABLE	THIS DRAWING CONTAINS INFORMATION THAT IS PROPRIETARY TO MOLEX INCORPORATED AND SHOULD NOT BE USED WITHOUT WRITTEN PERMISSION						

ASSEMBLY

151063 - X X X X

02 - 10	2-10 CKT W/O PEG
52 - 60	2-10 CKT WITH PEG
	52 = 2CKT
	53 = 3CKT
	.
	59 = 9CKT
	60 = 10CKT

PLATING		CAP VERSION
0	FULL TIN	WITHOUT CAP
1	Au FLASH	
2	0.38 Au	
3	0.75 Au	
4	FULL TIN	WITH CAP
5	Au FLASH	
6	0.38 Au	
7	0.75 Au	
8	OTHER OPTIONS	
9		

	P TAIL LENGTH	PACKAGING
0	2.60	TAPE & REEL
1	3.60	
2	4.60	
3	2.60	
4	3.60	TUBE
5	4.60	
6		OTHER OPTIONS
7		
8		
9		

PLATING OPTIONS	
-*0** & -*4**	2.50µm MIN. TIN ON CONTACT AND 2.00µm MIN. TIN (MATTE) ON SOLDERTAIL OVER 1.25µm MIN. NICKEL OVERALL.
-*1** & -*5**	0.05µm MIN. GOLD PLATE ON CONTACT AND 2.00µm MIN. TIN(MATTE) ON SOLDERTAIL OVER 1.25µm MIN. NICKEL OVERALL.
-*2** & -*6**	0.38µm MIN. GOLD PLATE ON CONTACT AND 2.00µm MIN. TIN(MATTE) ON SOLDERTAIL OVER 1.25µm MIN. NICKEL OVERALL.
-*3** & -*7**	0.75µm MIN. GOLD PLATE ON CONTACT AND 2.00µm MIN. TIN(MATTE) ON SOLDERTAIL OVER 1.25µm MIN. NICKEL OVERALL.

PACKAGING OPTION AND CAP	
TAPE & REEL	151000-4***
PACKAGING TUBE	151000-3015 (WITHOUT CAP) 151000-3018 (WITH CAP)
CAP	151088-0001
P TAIL LENGTH	RECOMMENDED PCB THICKNESS
2.60	1.50
3.60	2.50
4.60	3.50

<b>REVISE DATECODE</b> EC NO: S2016-0127 DRWN:FCS00 2015/08/13 CHKD:CGOH 2015/09/18 APPR:KHLIM 2015/09/18	QUALITY SYMBOLS $F_A=0$ $F_G=0$ $F_P=0$	GENERAL TOLERANCES (UNLESS SPECIFIED)		DIMENSION STYLE <b>MM ONLY</b>		SCALE NTS	DESIGN UNITS METRIC	THIRD ANGLE PROJECTION			
		4 PLACES ± --- ± --- 3 PLACES ± --- ± --- 2 PLACES ± 0.20 ± --- 1 PLACE ± --- ± --- 0 PLACE ± --- ± ---	mm INCH ± --- ± --- ± 0.20 ± --- ± --- ± --- ± --- ± ---	DRAWN BY FCS00	DATE 2014/12/16	TITLE SALES DRAWING PCB HEADER, VERTICAL TH SINGLE ROW MILLIGRID					
		DRAFT WHERE APPLICABLE MUST REMAIN WITHIN DIMENSIONS		APPROVED BY KHLIM	DATE 2015/07/02	DOCUMENT NO. <b>SD-151063-0001</b>					
		MATERIAL NO. <b>SEE TABLE</b>	SIZE <b>A3</b>	THIS DRAWING CONTAINS INFORMATION THAT IS PROPRIETARY TO MOLEX INCORPORATED AND SHOULD NOT BE USED WITHOUT WRITTEN PERMISSION							