

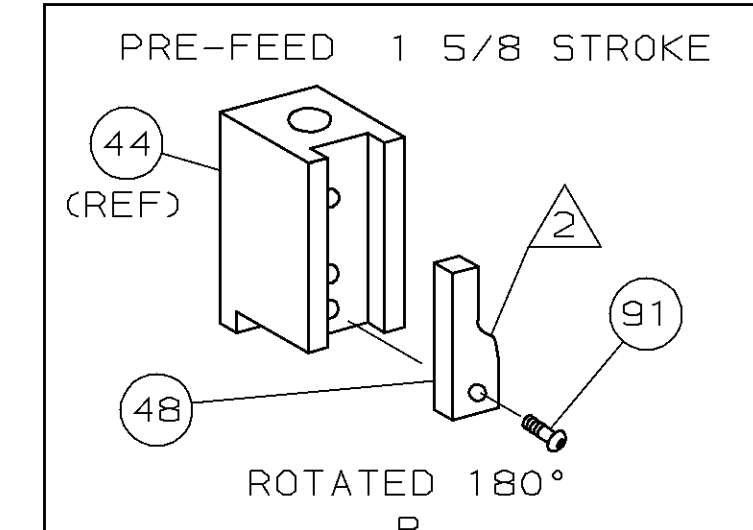
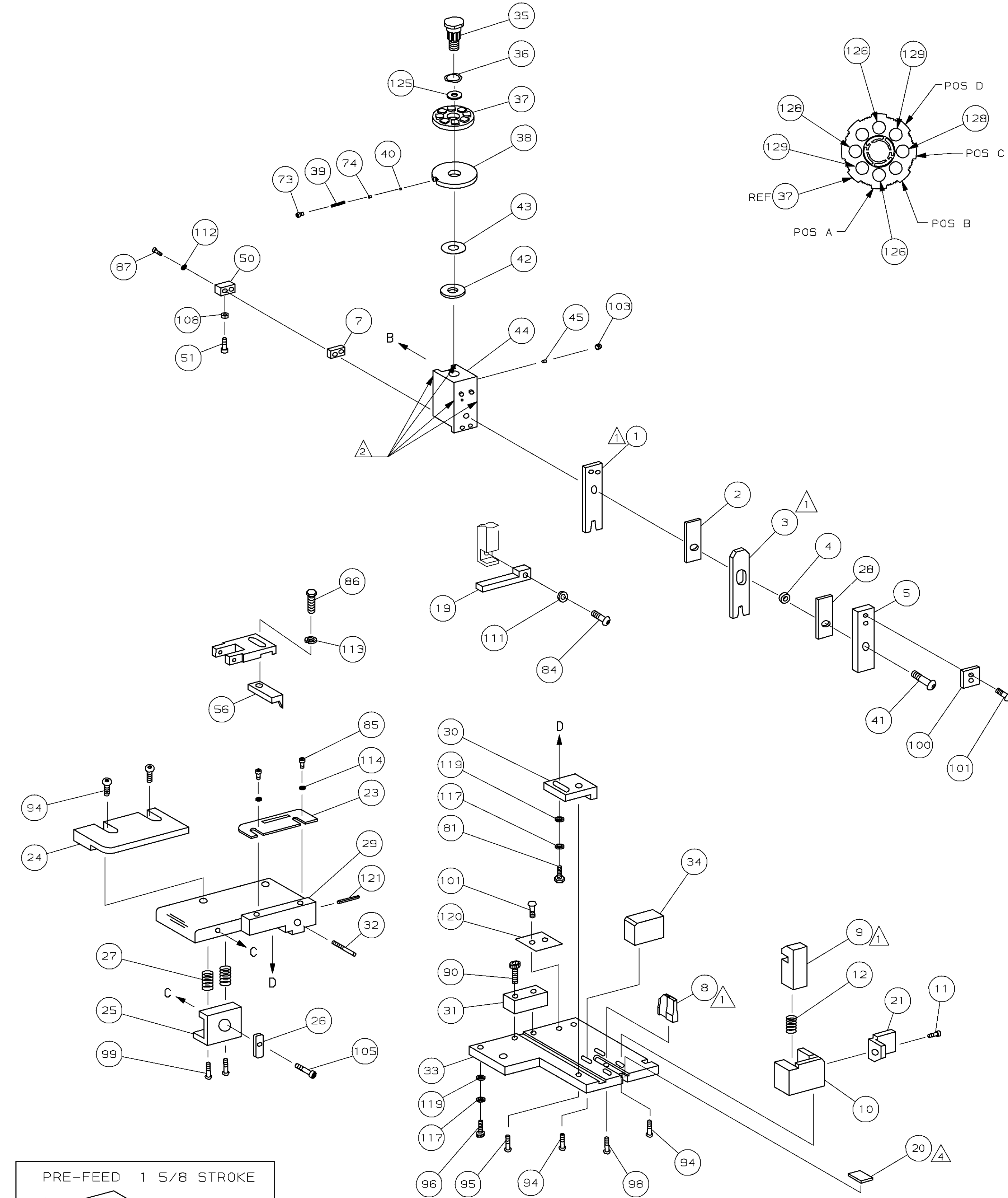
PART NUMBER	REV	FIRST USED
567941-1	A	854040-3

TERMINAL NAME: SOCKET & PIN		CRIMPING DATA	
PIN	SOCKET	VISIBLE PAD LTR	CRIMP HEIGHT
286632	286633	A	.055±.002 [1.40±0.05mm]
		B	.048 ±.002 [1.22 ±0.05mm]
		C	.044±.002 [1.12±0.05mm]
		D	NOT USED
WIRE	SIZE	TYPE	RANGE
.070	[1.78mm]	F	22-18
INSUL	SIZE	TYPE	RANGE
.140	[3.56mm]	F	.065-.110

QTY	REV	TERMINAL	APPL	SPEC	FEED	APPL INSTRUCTION	SET UP GAGE	LAYOUT
2	-	C	4-354779-6	PIN, WIRE DISC (.3220)D	129			
2	-	C	3-354779-2	PIN, WIRE DISC (.3150)C	128			
2	-	C	5-354779-5	PIN, WIRE DISC (.3265)A	126			
1	-	A	986950-1	WASHER, FLAT PRECISION	125			
1	-	A	217238-3	GENERAL INSTRUCTION PACKAGE	124			
1	-	A	4-21028-0	PIN, SLT SPR (Ø .093x.75) ST GDE PL	121			
1	-	B	690701-2	PLATE, SERIAL NO.	120			
2	-	A	21899-2	WASHER, FLAT (#10) S G ADJ BLK	119			
2	-	A	21024-5	WASHER, LOCK (#10) ADJ BLOCK	117			
2	-	A	21024-2	WASHER, LOCK (#4) FRONT STP GUIDE	114			
REF	-	A	21024-4	WASHER, LOCK (#8) FEED FINGER	113			
2	-	A	21024-4	WASHER, LOCK (#8) DEP-HOLD	112			
REF	-	A	21024-4	WASHER, LOCK (#8) STRIPPER	111			
1	-	A	21018-5	NUT, HEX (#6) HOLD DOWN	108			
1	-	A	22353-8	SCR, SHLD (Ø .187x.25) DRAG LEVER	105			
1	-	A	21009-2	SCR, SKT SET (1/4-20x.25 LW) RAM	103			
4	-	A	21017-2	SCR, DRIVE (#2x.19) ID PLATE	101			
1	-	B	819347-1	PLATE, IDENTIFICATION	100			
2	-	A	3-21002-0	SCR, BHC (10-32x.88) DRAG	99			
1	-	A	22733-8	SCR, BHC (8-32x.38 LW) ANVIL	98			
1	-	A	3-21000-8	SCR, SHC (10-32x.88) MOUNTING	96			
1	-	A	2-21002-7	SCR, BHC (10-32x.50) S G ADJ BLK	95			
6	-	A	2-21002-2	SCR, BHC (8-32x.50) SHEAR-TERM SUP	94			
1	-	A	1-21002-7	SCR, SHC (6-32x.50) CAM	91			
2	-	A	2-21000-7	SCR, SHC (8-32x.50) SCR BLK	90			
REF	-	A	2-22603-0	SCR, HEX HD (8-32x.31) FEED FINGER	86			
2	-	A	1-21000-3	SCR, SHC (4-40x.25) F ST GUIDE	85			
REF	-	A	22733-9	SCR, BHC (8-32x.50 SL) STRIPPER	84			
2	-	B	463310-6	BLADE, STRIPPING (#22)	77			
1	-	A	690603-1	SPRING, ASSIST	74			
1	-	A	23030-1	SCR, SKT CAP (6-32x.25) CP DSC	73			

SIM TO HDM NONE

QTY	REV	TERMINAL	APPL	SPEC	DESCRIPTION	ITEM NO
1	-	A	811242-2	BUMPER, HOLDDOWN	51	
1	-	A	690753-1	SPACER, TONKER	50	
1	-	A	690602-6	CAM, PRE-FEED 1.62 STROKE	48	
1	-	A	690191-1	PLUG, NYLON	45	
1	-	C	455673-1	RAM	44	
1	-	A	690125-1	WASHER, LAMINATED	43	
1	-	A	690124-1	WASHER, RAM	42	
1	-	A	7-21002-9	BOLT, CRIMPER (5/16x1.00)	41	
1	-	A	23241-6	BALL, STEEL	40	
1	-	A	690170-1	SPRING, COMPRESSION	39	
1	-	C	690142-1	DISC, INSULATION	38	
1	-	D	354777-1	WIRE DISC, PLASTIC	37	
1	-	A	22480-5	WASHER, SPRING	36	
1	-	B	690212-1	POST, RAM	35	
1	-	B	690786-3	SUPPORT, TERMINAL	34	
1	-	C	462544-1	PLATE, BASE SPECIAL	33	
1	-	A	690432-3	SCREW, ADJUSTMENT	32	
1	-	B	462543-1	BLOCK, SCREW SPECIAL	31	
1	-	B	455689-1	BLOCK, STRIP GUIDE ADJ	30	
1	-	C	458144-1	PLATE, STRIP GUIDE	29	
1	-	C	1-455888-5	SPACER, FRONT SHEAR DEP	28	
2	-	A	1-22284-0	SPRING, DRAG	27	
1	-	B	240793-1	LEVER, DRAG RELEASE	26	
1	-	B	240792-1	DRAG, TERMINAL	25	
1	-	D	856873-1	GUIDE, STRIP (REAR)	24	
1	-	A	690438-1	GUIDE, STRIP (FRONT)	23	
1	-	A	463756-1	GUIDE, SCRAP	21	
1	-	A	904275-1	SUPPORT, SPRING	20	
REF	-	C	462615-1	STRIPPER	19	
1	-	A	5-22280-0	SPRING, SHEAR	12	
1	-	B	1-690461-6	STOP, SHEAR (FRONT)	11	
1	-	B	462548-1	HOLDER, SHEAR (FRONT) SP	10	
1	-	B	462547-3	SHEAR, FLOAT (FRONT) SP	9	
1	-	C	662185-7	ANVIL	8	
1	-	C	1-240641-1	SPACER, DEPRESSOR (REAR)	7	
1	-	A	462838-1	DEPRESSOR, SHEAR (FRONT) SP	5	
1	-	B	238011-5	SPACER, BLOCK CRIMPER	4	
1	-	C	8-456134-2	CRIMPER, INSULATION	3	
1	-	C	455888-8	SPACER, CRIMPER	2	
1	-	C	3-456404-1	CRIMPER, WIRE	1	



- 1 RECOMMENDED SPARE PARTS.
- 2 GREASE LIGHTLY.
- 3 ITEM NOT SHOWN
- 4 ATTACH ITEM 20 TO ITEM 33 USING ADHESIVE PART NUMBER 28998-6.

- 5 STRIP GUIDE PLATE ADJUSTMENT REQUIRED WHEN SWITCHING TERMINALS. 1550-2060 CMA.
- 6 CUT TO LENGTH AT ASSY.
- 7 CORRECT CRIMP HEIGHT IS ACHIVED BY USING 1780 CMA (+/- 50 CMA) 18 GAUGE WIRE WHEN QUALIFYING.

QTY	REV	U/M	DWG SIZE	PART NO	DESCRIPTION	ITEM NO
1	-	U/M				

QTY	REV	U/M	DWG SIZE	PART NO	DESCRIPTION	ITEM NO
1	-	U/M				

REVISION OF EACH ASSY NO (WHEN BLANK, USE DWG REVISION)

REVISION RECORD

DATE

APPROVED

DATE

SCALE

DWG NO

567941

SHEET 1 OF 1

REV A

CUSTOMER AND ASSEMBLY DRAWING

THIS DRAWING IS A CONTROLLED DOCUMENT. ANY INCORPORATED. THE ORGANIZATION SHOULD BE CONTACTED FOR THE LATEST REVISION.

THIS INFORMATION IS CONFIDENTIAL AND IS DISTRIBUTED TO YOU ON THE CONDITION THAT YOU WILL NOT DISCLOSE IT TO OTHERS WITHOUT THE WRITTEN PERMISSION OF AMP. ALL RIGHTS RESERVED.