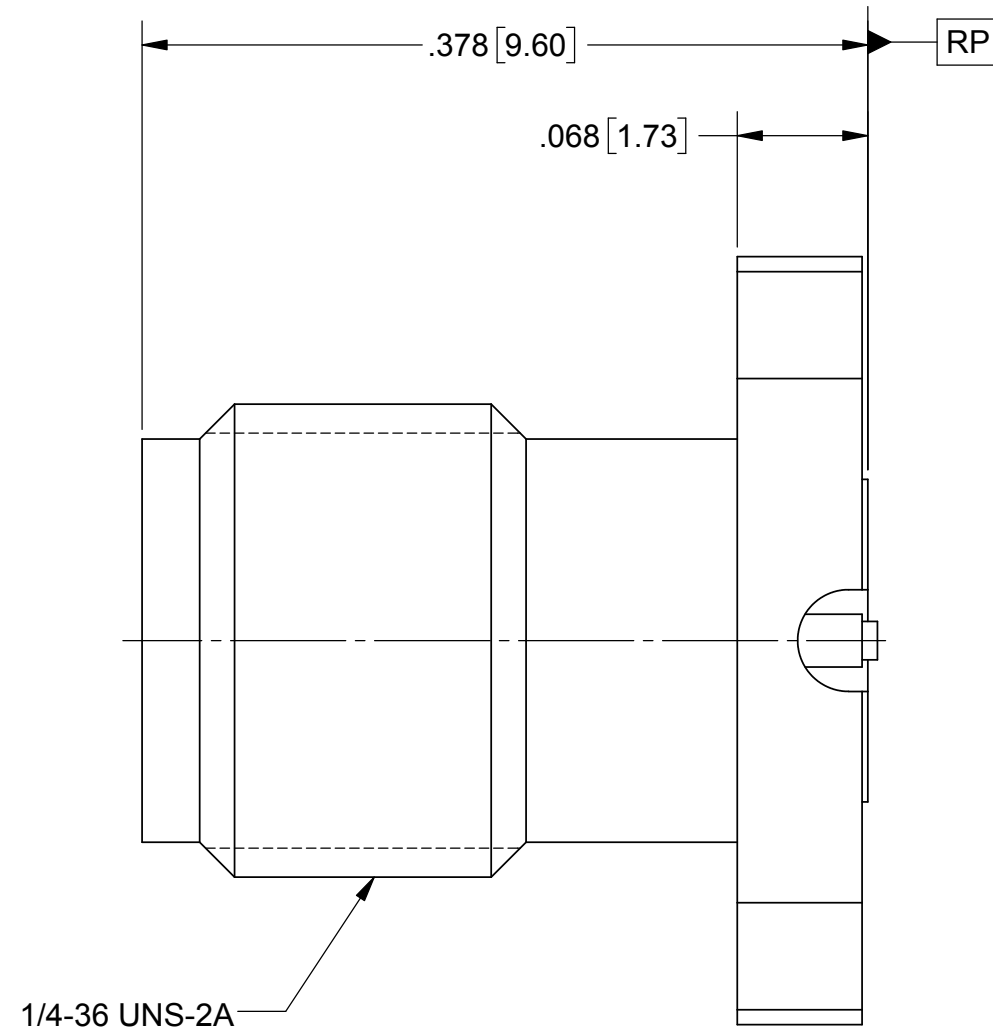
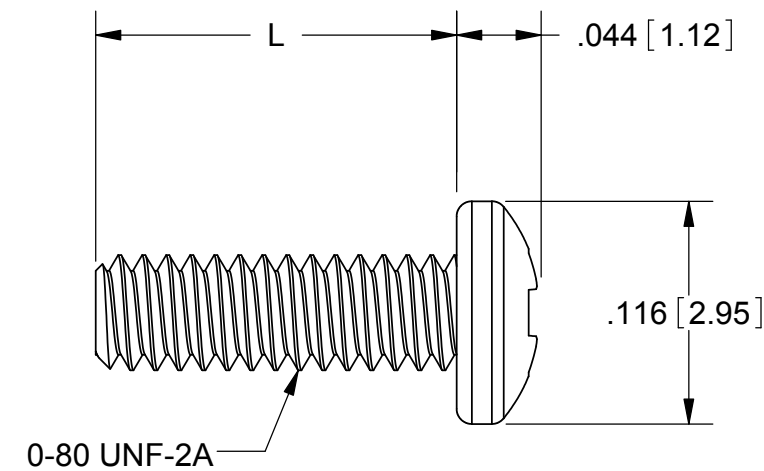
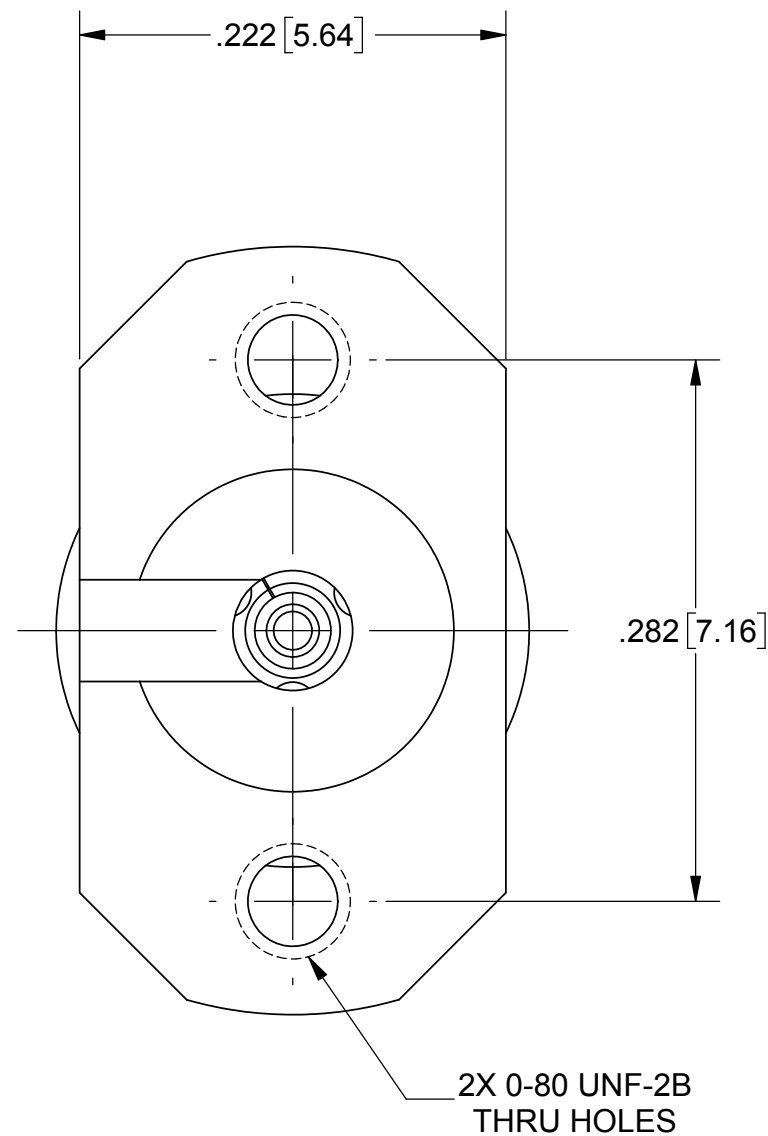


PRODUCT DATA DRAWING

| REVISION HISTORY | | | |
|------------------|-------------|-------|----------|
| REV | DESCRIPTION | DATE | APPROVED |
| 01 | PRELIMINARY | 12/16 | DAL |
| | | | |



1/4-36 UNS-2A



| SCREW OPTIONS | L |
|---------------|------|
| FOR -1S | .188 |
| FOR -2S | .250 |
| FOR -3S | .438 |

| SV P/N | DESCRIPTION | PCB THICKNESS |
|-----------------|-----------------------|---------------|
| SF1521-60070-1S | INCL. TWO .188 SCREWS | .023 TO .123 |
| SF1521-60070-2S | INCL. TWO .250 SCREWS | .085 TO .185 |
| SF1521-60070-3S | INCL. TWO .438 SCREWS | .273 TO .373 |
| SF1521-60070 | NO SCREWS | .023 TO .373 |

MATERIAL:

BODIES & SCREWS: STAINLESS STEEL
 CONTACT: BERYLLIUM COPPER
 INSULATOR: ULTEM
FINISH:
 BODIES & SCREWS: PASSIVATED
 CONTACT: GOLD OVER NICKEL

NOTES:

1. FOR A FOOTPRINT RECOMMENDATION SPECIFIC TO YOUR PCB, PLEASE CONTACT US AT applications@svmicro.com

| | | | |
|---|--|--|---|
| MATERIAL: SEE NOTES | DIMENSIONS ARE IN INCHES TOLERANCES: FRACTIONAL: ±1/64 ANGULAR: X° ±1'0" X'X' ±15' | UNLESS OTHERWISE SPECIFIED 1) ALL DIMENSIONS ARE IN INCHES (MILLIMETERS) 2) ALL DIMENSIONS ARE AFTER PLATING. 3) BREAK CORNERS & EDGES .005 R. MAX. 4) CHAM. 1ST & LAST THREADS. 5) SURFACE ROUGHNESS 63-MIL-STD-10. 6) DIA. 'S' ON COMMON CENTERS TO BE CONCENTRIC WITHIN T.I.R. 7) REMOVE ALL BURRS | 2400 Centrepark West Drive, Suite 100 West Palm Beach, FL 33409 TITLE: 2.92mm JACK 2 HOLE FLANGE WITH MOUNTING SCREWS |
| FINISH: SEE NOTES | DECIMAL: X ±.030 .XX ±.010 .XXX ±.005 | INTERPRET DIMENSIONS AND TOLERANCES PER ASME Y14.5M - 1994 | |
| SURFACE AREA: N/A | THIRD ANGLE PROJECTION | DRAWN: BNK 12/08/16 | SIZE: B |
| PROPRIETARY THE INFORMATION CONTAINED IN THIS DRAWING IS THE SOLE PROPERTY OF SV MICROWAVE, INC. ANY REPRODUCTION IN PART OR AS A WHOLE WITHOUT THE WRITTEN PERMISSION OF SV MICROWAVE, INC IS PROHIBITED. | | CHECKED: DAL 12/08/16 | CAGE CODE: 95077 |
| | | APPROVED: DAL 12/08/16 | DWG. NO. SF1521-60070-XS |
| | | | SCALE: 10:1 |
| | | | SHEET 1 OF 1 |