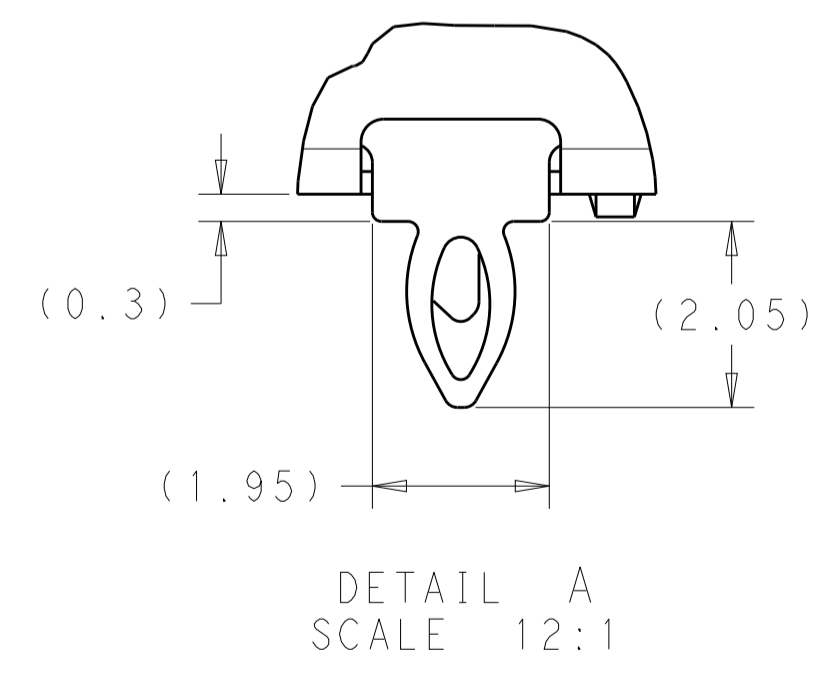
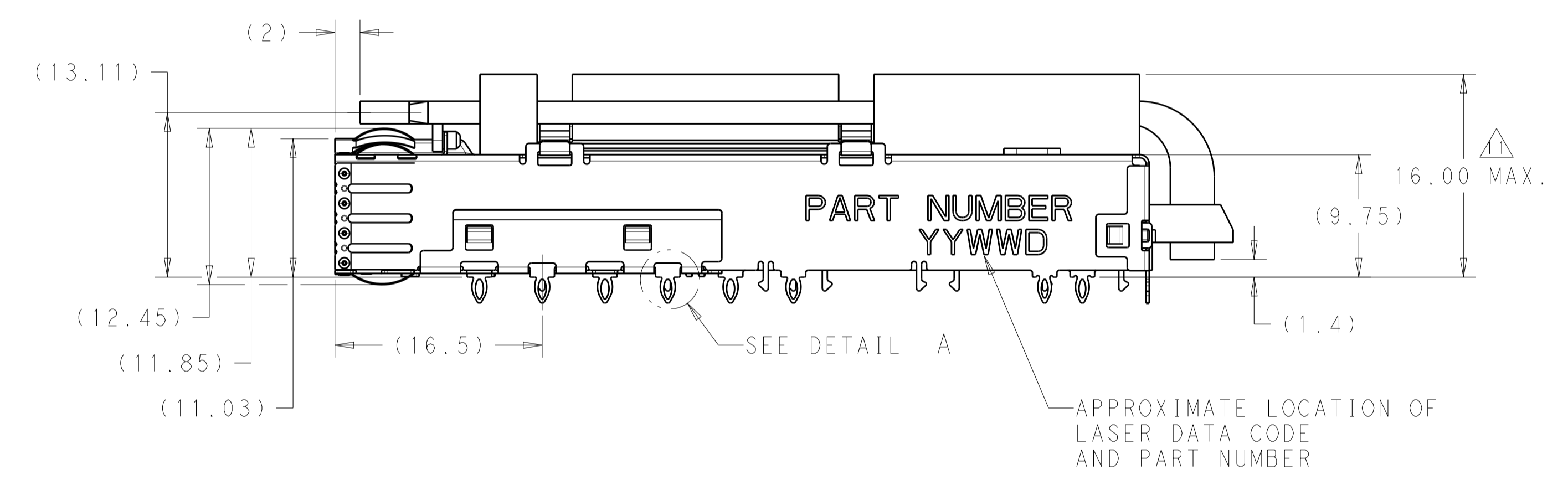


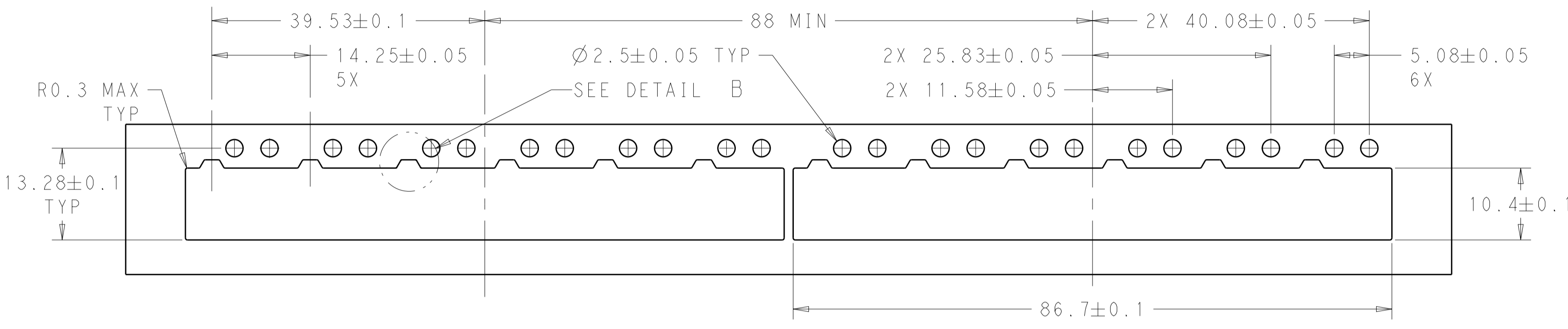
1. CAGE: 0.25mm THICK STAINLESS STEEL  
EMI SPRINGS: COPPER ALLOY  
HEAT SINK: ALUMINUM  
HEAT SINK CLIP: STAINLESS STEEL  
LIGHT PIPE: CLEAR POLYCARBONATE
  2. FINISH:  
SPRINGS: 0.8um NICKEL. NON-PLATED EDGES PERMISSIBLE.  
HEAT SINK: BLACK ANODIZATION
  3. MATES WITH SFP-DD MSA COMPLIANT TRANSCEIVERS.
  4. INTERPRETATION OF DATUM REFERENCE FRAME IN ACCORDANCE WITH SECT 4.4.1.1 OF ASME Y14.5M-1994.
  5. MINIMUM PC BOARD THICKNESS:  
SINGLE SIDED = 1.57mm  
DOUBLE SIDED = 2.20mm
  6. DATUM AND BASIC DIMENSION ESTABLISHED BY CUSTOMER.
  7. REFERENCE APPLICATION SPEC. 114-60027, HOLE A, FOR RECOMMENDED DRILL HOLE DIAMETER AND PLATING THICKNESS.
  8. REFERENCE APPLICATION SPEC. 114-60027, HOLE B, FOR RECOMMENDED DRILL HOLE DIAMETER AND PLATING THICKNESS.
  9. HOLE PATTERN REPEATS FOR EACH PORT. SPACING BETWEEN PORTS IS 14.25mm.
  10. DATUM -A- IS TOP SURFACE OF THE HOST BOARD.
- △ DIMENSION APPLIES WITH MODULE INSERTED INTO CAGE.

REVISIONS				
P.	LTN.	DESCRIPTION	DATE	APVD.
	A	INITIAL RELEASE	26OCT2020	AJ SH

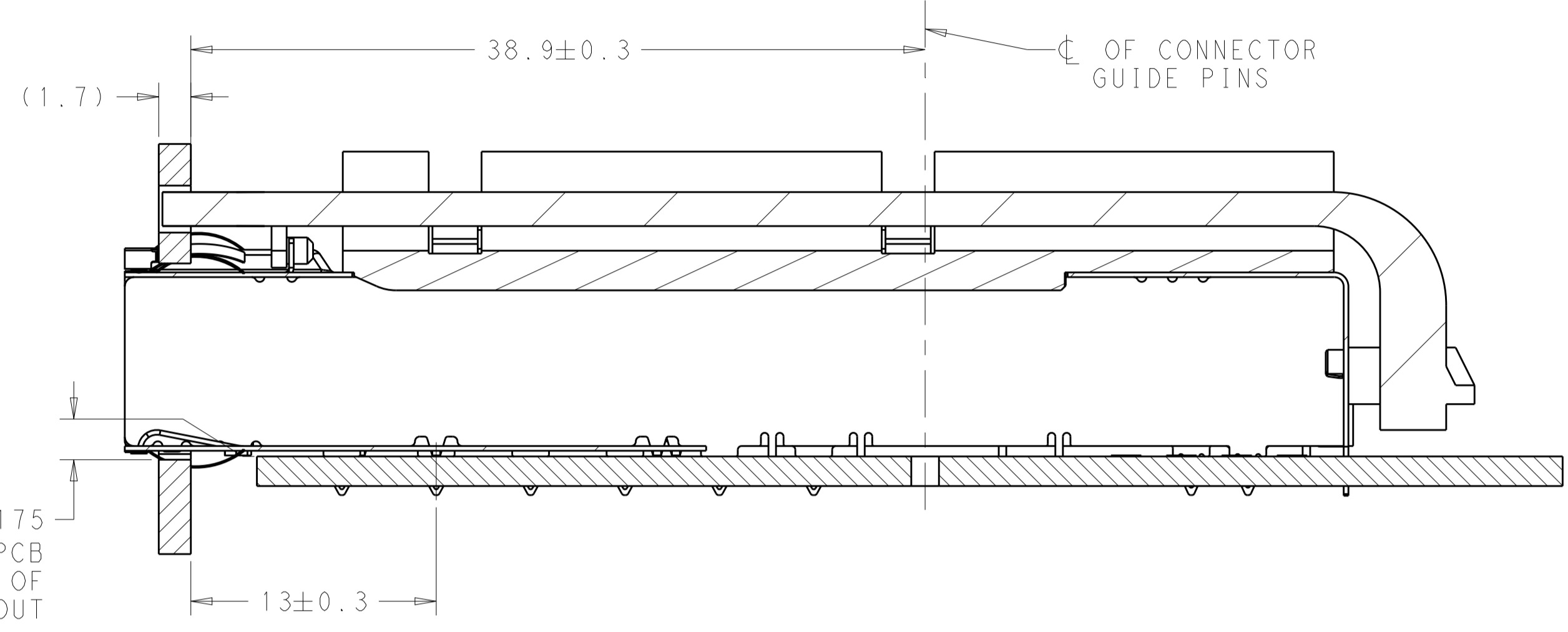


SAN		2	2	2364706-1
HEAT SINK		LIGHT PIPE # PER PORT	REAR PIN # PER PORT	PART NUMBER
THIS DRAWING IS A CONTROLLED DOCUMENT.		DWN: ARTHUR JIN 04NOV2019 CHK: SEAN HAN 04NOV2019 APVD:		TE Connectivity
DIMENSIONS:		PRODUCT SPEC: 108-60128 APPLICATION SPEC: 114-60027		
TOLERANCES UNLESS OTHERWISE SPECIFIED:		WEIGHT: -		RESTRICTED TO
MATERIAL:		CUSTOMER DRAWING		SCALE: 1:1 SHEET 1 OF 5 REV A

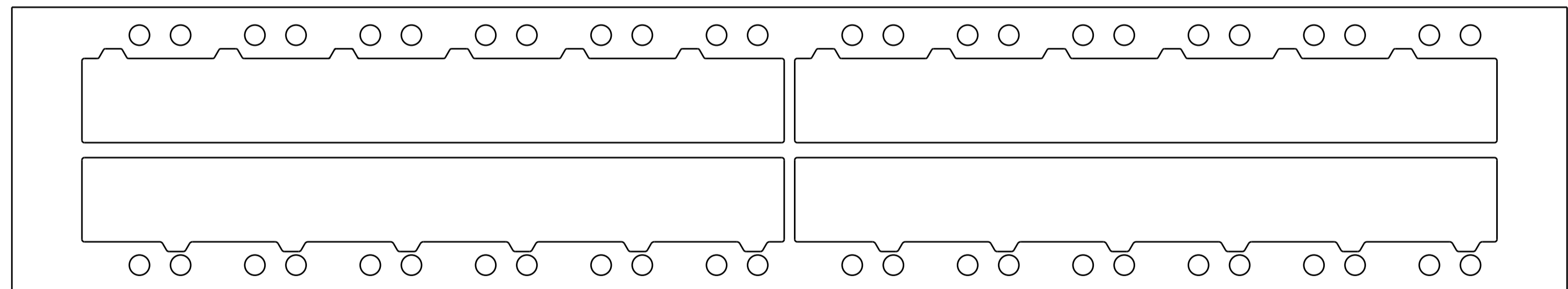
REVISIONS				
P.	LTN	DESCRIPTION	DATE	APVD
-	-	SEE SHEET 1	-	-



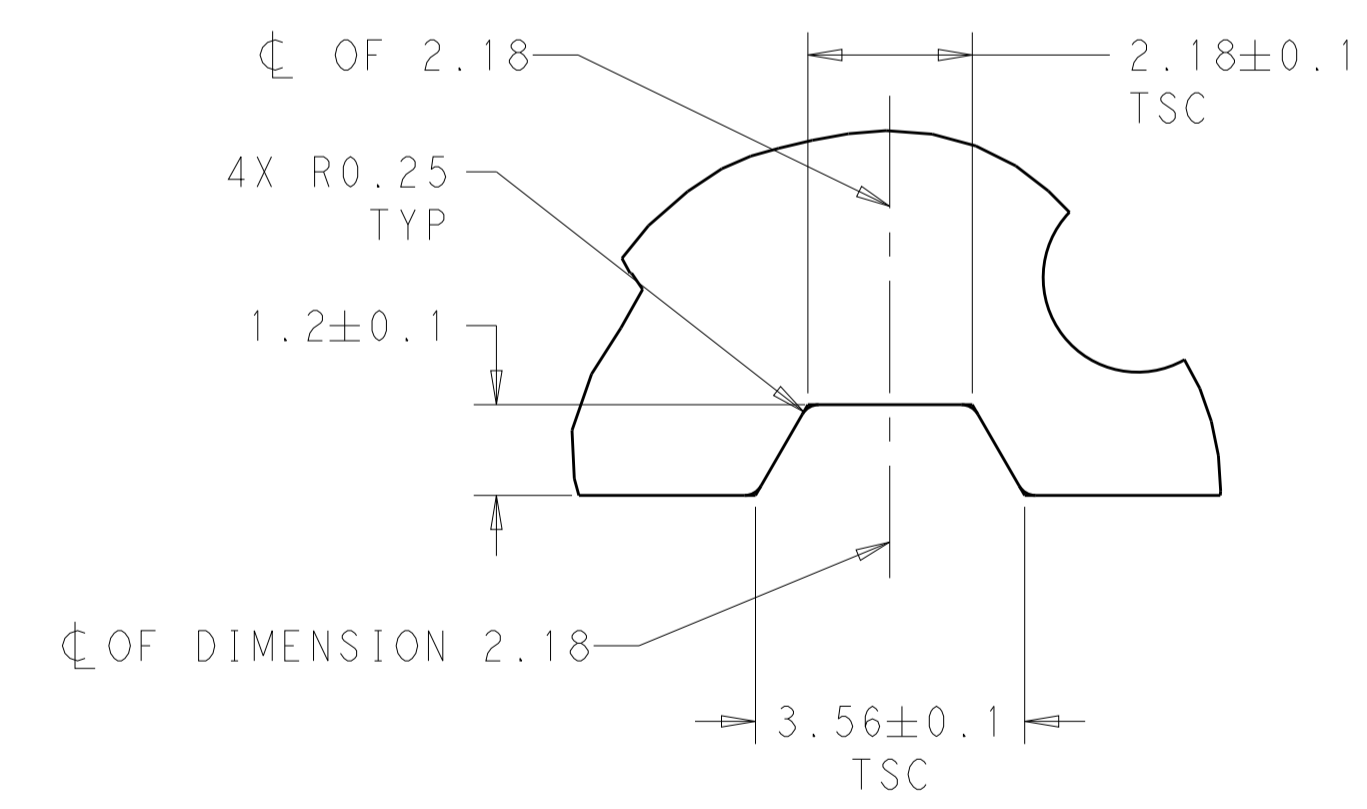
RECOMMENDED BEZEL CUT-OUT  
SINGLE SIDED APPLICATIONS  
SCALE 2:1



SINGLE SIDED MOUNTED ON PC BOARD  
SHOWN THRU RECOMMENDED BEZEL  
SECTION BEZEL-BEZEL  
SCALE 4:1



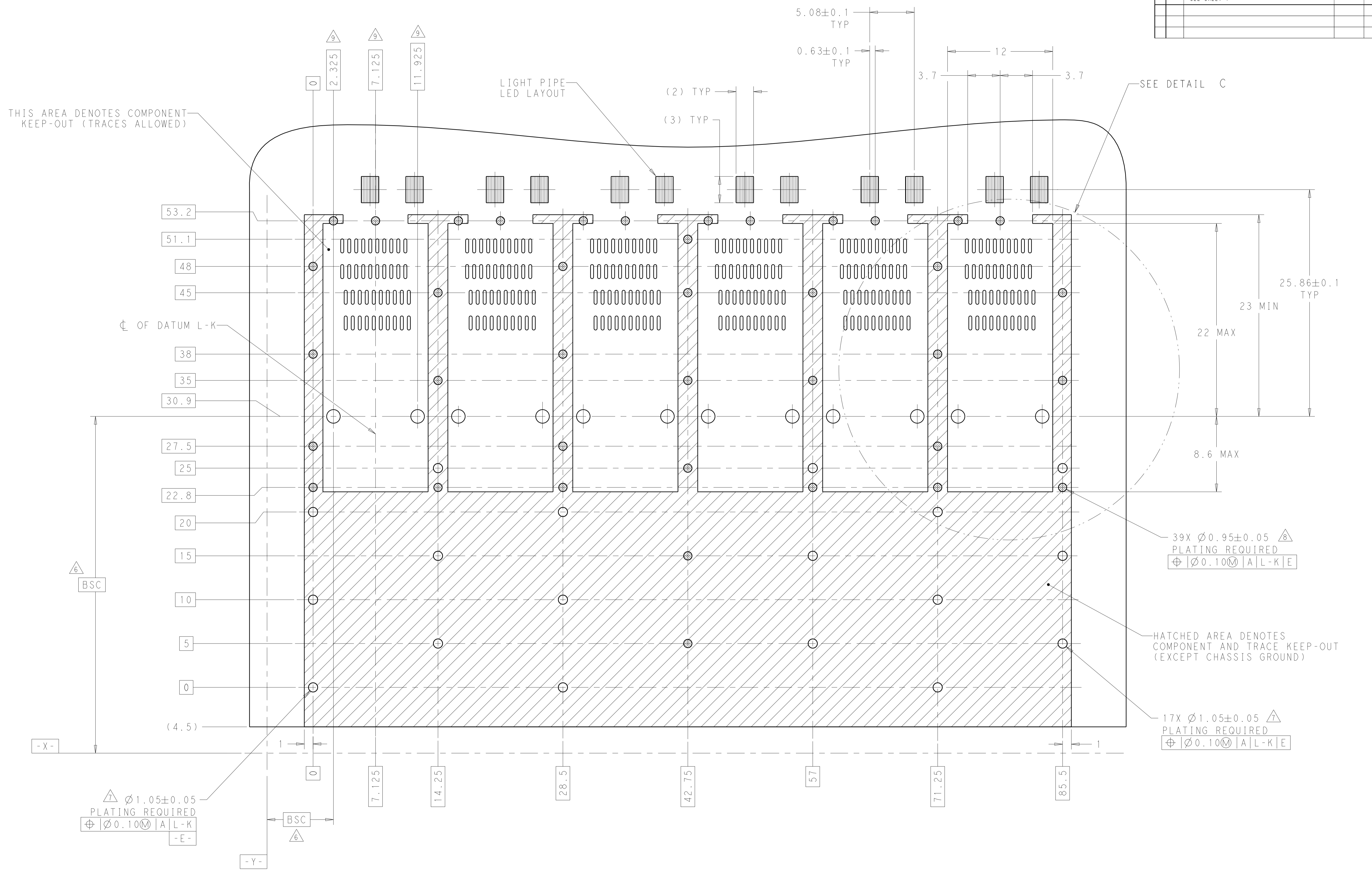
RECOMMENDED BEZEL CUT-OUT  
BELLY TO BELLY APPLICATIONS  
SCALE 2:1



DETAIL B  
SCALE 10:1

THIS DRAWING IS A CONTROLLED DOCUMENT.		OWN: ARTHUR JLN 04NOV2019	TE Connectivity
DIMENSIONS: mm		CHK: SEAN HAN 04NOV2019	
TOLERANCES UNLESS OTHERWISE SPECIFIED:		APVD:	NAME: SFPDD 1X6 CAGE ASSEMBLY W/LP HS PRESS-FIT, EXTERNAL EMI SPRINGS
0 PLC	±0.25	PRODUCT SPEC:	108-60128
1 PLC	±0.25	APPLICATION SPEC:	-
2 PLC	±0.20	SIZE: CAGE CODE DRAWING NO:	114-60027
3 PLC	±0.20	RESTRICTED TO:	A   00779   C=2364706
4 PLC	±	WEIGHT:	-
ANGLES:	±	CUSTOMER DRAWING:	SCALE 1:1 SHEET 2 OF 5 REV A
MATERIAL:	FINISH:		

REVISIONS				
P.	LTR.	DESCRIPTION	DATE	APPD.
-	-	SEE SHEET 1	-	-

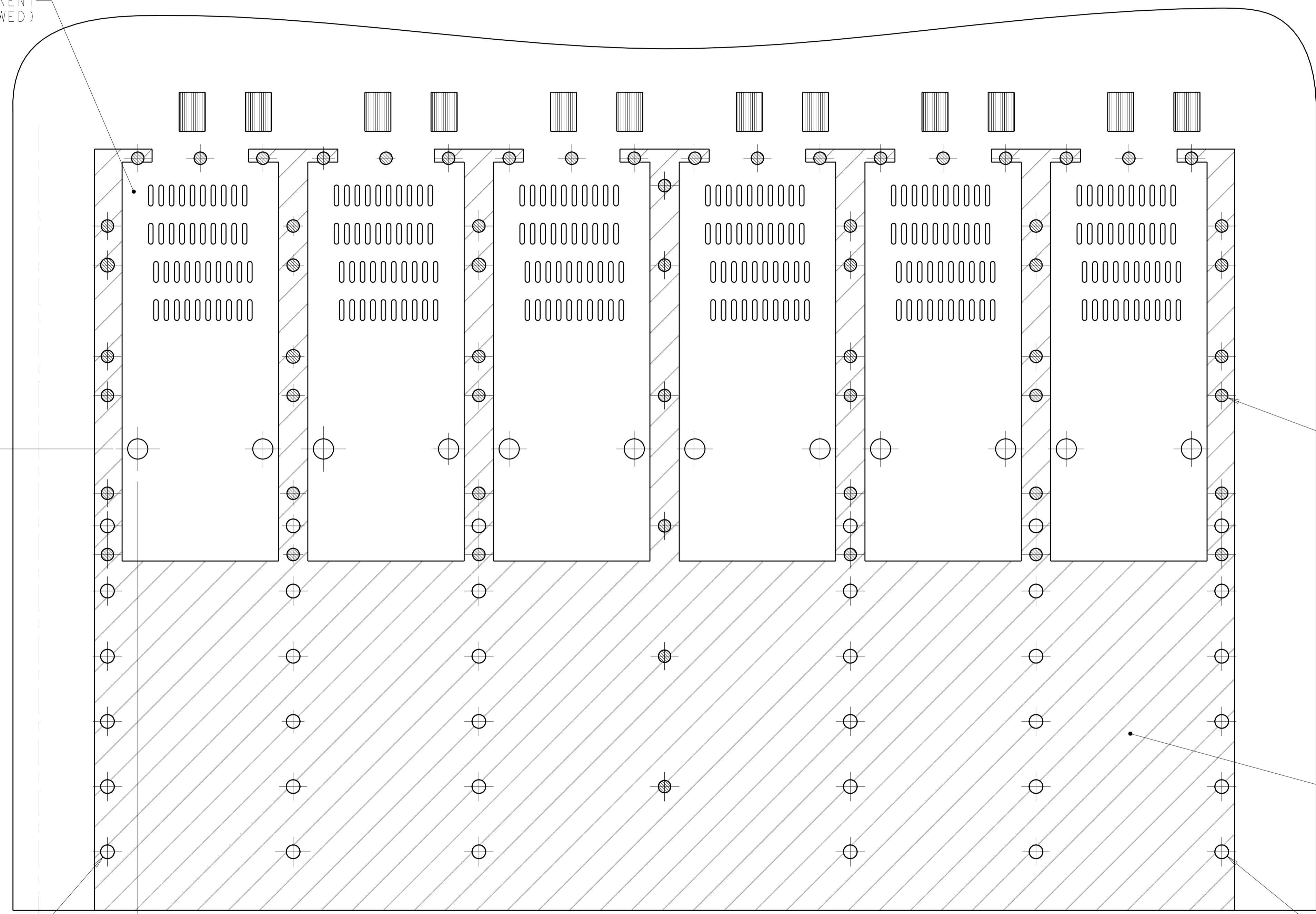


RECOMMENDED PCB CONFIGURATION  
WITH KEEP-OUT AREAS  
SINGLE SIDED APPLICATIONS  
SCALE 5:1

THIS DRAWING IS A CONTROLLED DOCUMENT.		DWN: ARTHUR_JLN 04NOV2019		TE Connectivity
DIMENSIONS: mm		CHK: SEAN_HAN 04NOV2019		NAME: SFPDD 1X6 CAGE ASSEMBLY W/LP HS PRESS-FIT, EXTERNAL EMI SPRINGS
TOLERANCES UNLESS OTHERWISE SPECIFIED:		APVD:	PRODUCT SPEC: 108-60128	RESTRICTED TO:
0 PLC ±0.25		APVD:	APPLICATION SPEC: 114-60027	SIZE: A
1 PLC ±0.25		APVD:	WEIGHT: -	SCALE: 1:1
2 PLC ±0.20		APVD:	CUSTOMER DRAWING	SHEET 3 OF 5
3 PLC ±0.20		APVD:	DATE: 04NOV2019	REV: A
4 PLC ±0.20		APVD:	00779C=2364706	
ANGLES: #		APVD:		
FINISH: #		APVD:		

REVISIONS				
P.	LTN	DESCRIPTION	DATE	APVD
-		SEE SHEET 1	-	-

THIS AREA DENOTES COMPONENT KEEP-OUT (TRACES ALLOWED)



6X Ø0.95±0.05  $\triangle$   
 PLATING REQUIRED  
 $\oplus$  | Ø0.10  $\text{\textcircled{M}}$  | A | L-K | E

HATCHED AREA DENOTES COMPONENT AND TRACE KEEP-OUT (EXCEPT CHASSIS GROUND)

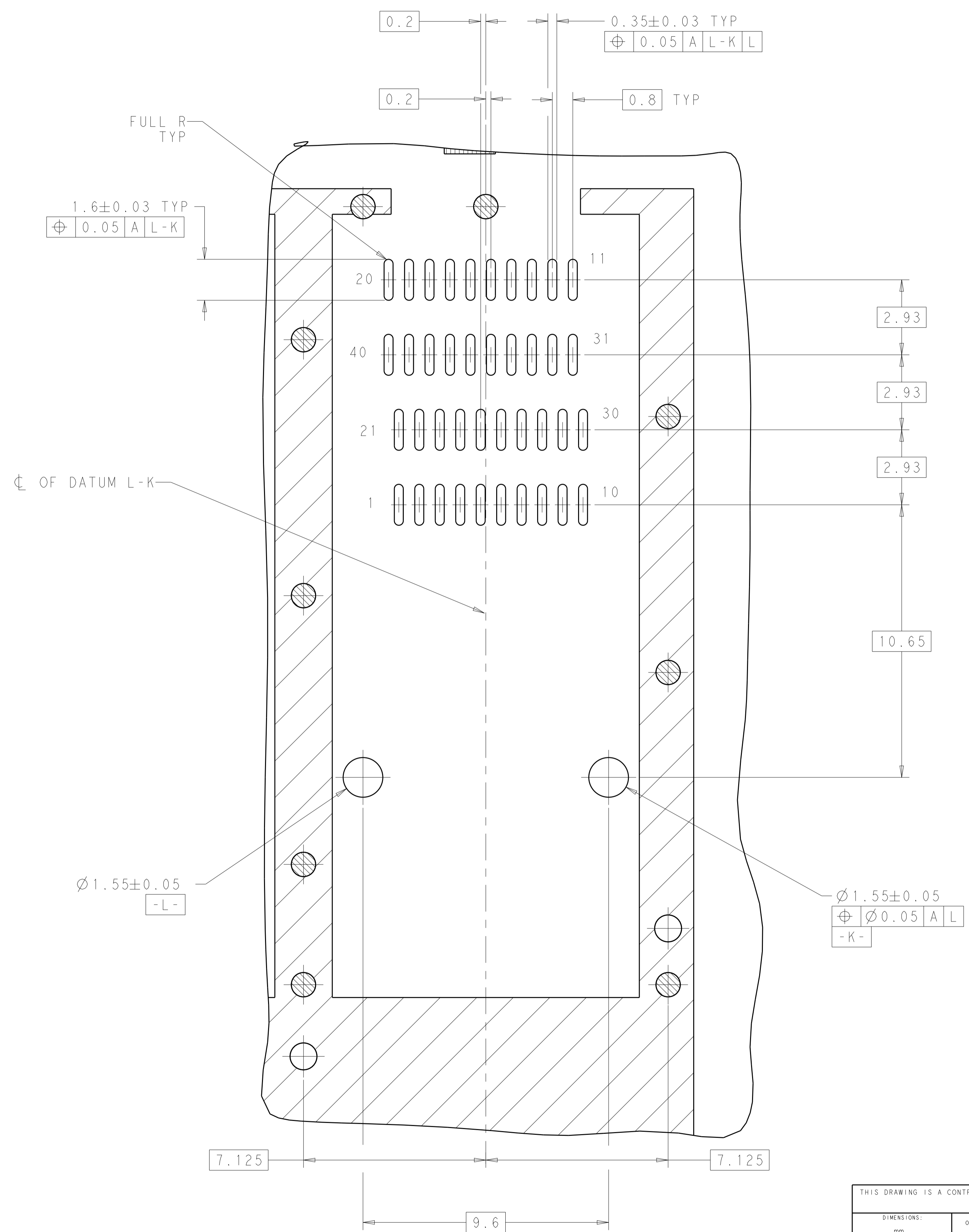
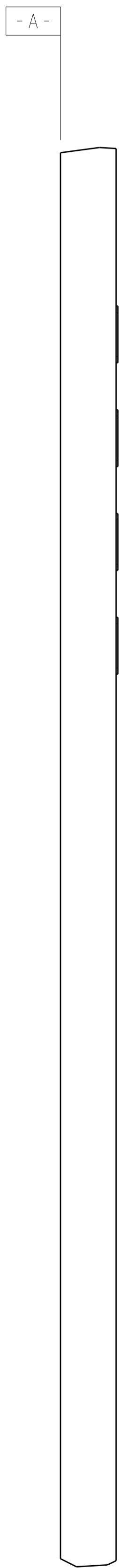
35X Ø1.05±0.05  $\triangle$   
 PLATING REQUIRED  
 $\oplus$  | Ø0.10  $\text{\textcircled{M}}$  | A | L-K | E

$\triangle$  Ø1.05±0.05  
 PLATING REQUIRED  
 $\oplus$  | Ø0.10  $\text{\textcircled{M}}$  | A | L-K | E

RECOMMENDED PCB CONFIGURATION WITH KEEP-OUTS FOR BELLY TO BELLY APPLICATIONS  
 SAME AS SINGLE SIDE APPLICATION, EXCEPT AS SHOWN  
 SCALE 5:1

THIS DRAWING IS A CONTROLLED DOCUMENT.		DWN: ARTHUR JIN 04NOV2019 CHK: SEAN HAN 04NOV2019 APVD:	TE Connectivity
DIMENSIONS: mm TOLERANCES UNLESS OTHERWISE SPECIFIED: 0 PLC ±0.25 1 PLC ±0.25 2 PLC ±0.20 3 PLC ±0.20 4 PLC ±0.20 ANGLES ±	PRODUCT SPEC: 108-60128 APPLICATION SPEC: 114-60027	NAME: SFPDD 1X6 CAGE ASSEMBLY W/LP HS PRESS-FIT, EXTERNAL EMI SPRINGS SIZE: 114-60027 CAGE CODE: 00779 DRAWING NO: 2364706	
MATERIAL: $\triangle$	FINISH: -	WEIGHT: -	RESTRICTED TO: - CUSTOMER DRAWING SCALE: 1:1 SHEET 4 OF 5 REV A

REVISIONS				
P.	LTN	DESCRIPTION	DATE	APVD
-	SEE SHEET 1			



DETAIL C  
SCALE 10:1

THIS DRAWING IS A CONTROLLED DOCUMENT.		DWN: ARTHUR JLN 04NOV2019 CHK: SEAN HAN 04NOV2019 APVD:	
DIMENSIONS: mm	TOLERANCES UNLESS OTHERWISE SPECIFIED: 0 PLC ±0.25 1 PLC ±0.25 2 PLC ±0.20 3 PLC ±0.20 4 PLC ±0.20 ANGLES ±	PRODUCT SPEC: 108-60128 APPLICATION SPEC: 114-60027 WEIGHT:	
MATERIAL:	FINISH:	CUSTOMER DRAWING SCALE: 1:1 SHEET: 5 OF 5 REV: A	