

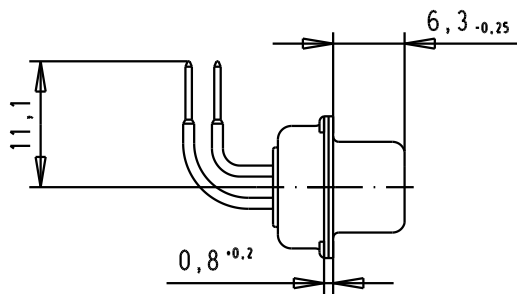
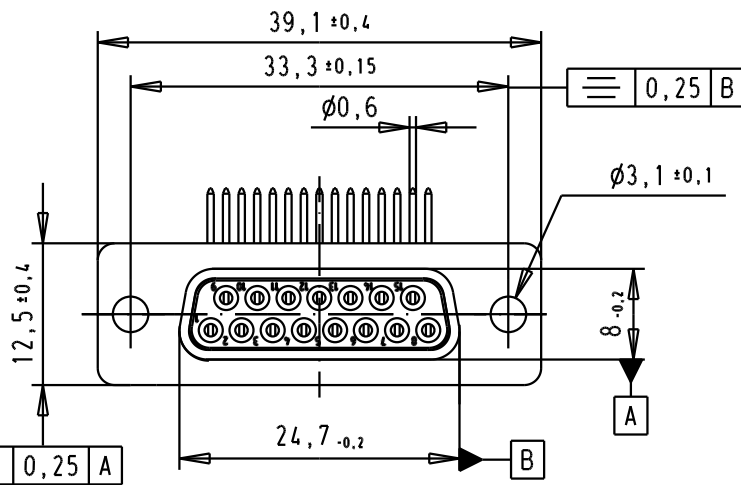
5

4

3

2

1

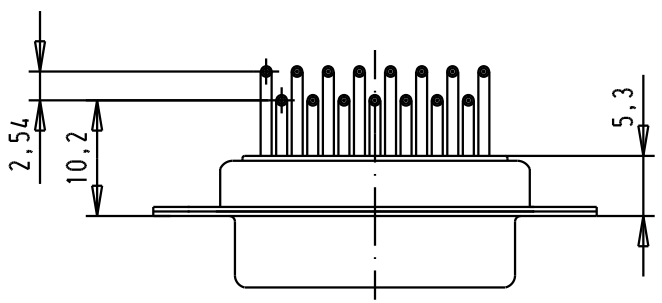
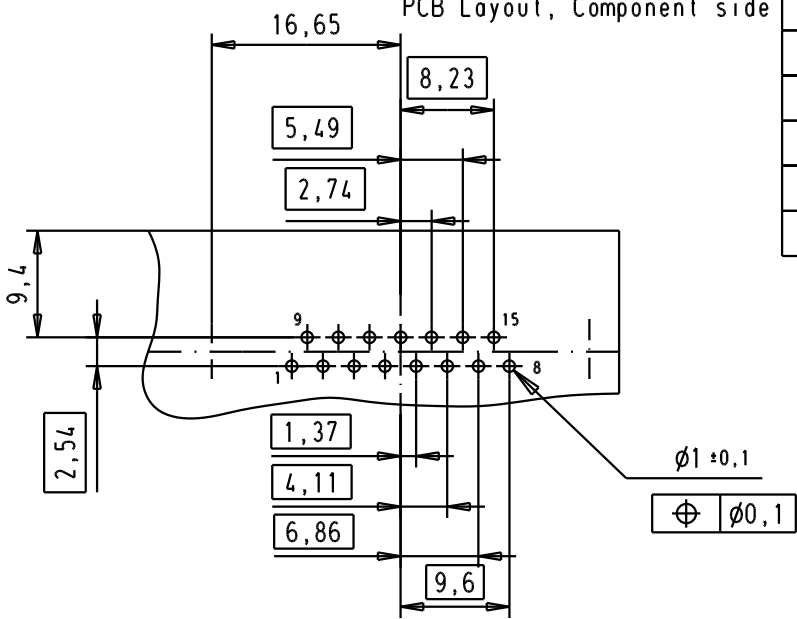


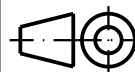
SPECIFICATION

Mating Cycles	500
Filter type	C
Capacitance	3900pf ± 20%
Working Voltage	100v
Current Rating	7.5A
Insulation Resistance	>1GΩ

FREQUENCY (MHz)	ATTENUATION dB
5	6dB
10	11dB
50	25dB
100	35dB
500	35dB
1000	32dB

PCB Layout, Component side



				Dat.	Name	 All Dim. in mm Orig. Size DIN A 4
			Detail.	8 - JUL - 02	CV	
			Insp.			
			Stand.			
33262	15/11/05	JMDR	HARTING EURL F-95972 Paris			
31058	8 - JUL - 02	CV				
Mod.	Dat.	Name				

Dsub, female, angled,
 15 poles, turned solder pins,
 tin plated shell with holes

Mo?MsLab/
Scale

1.5:1

TB 09642147240

Blatt/ Page

1 / 1

Sub.