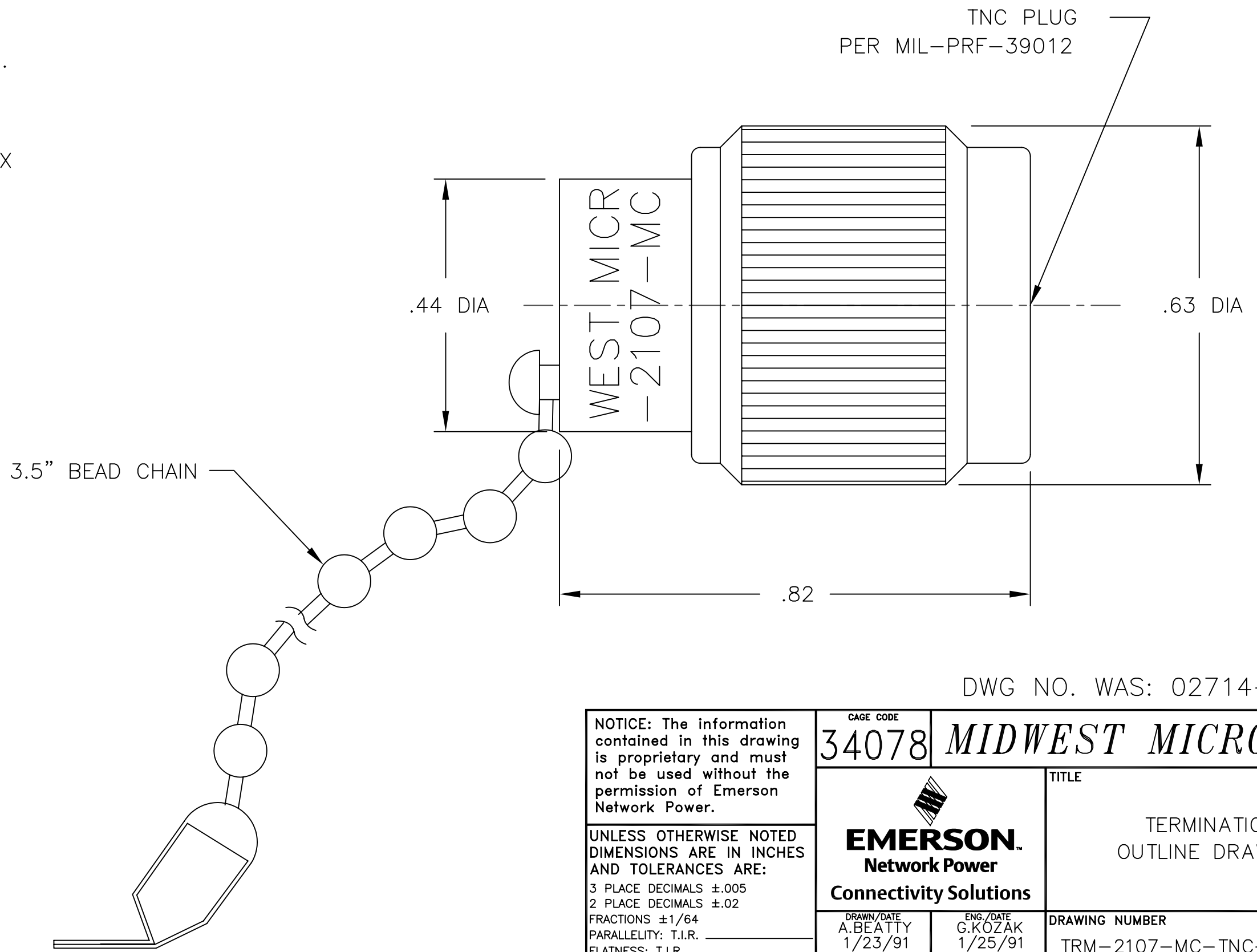


NOTES:

- 1.0 ELECTRICAL SPECIFICATIONS:
 - 1.1 FREQUENCY RANGE: DC TO 12.4GHZ
 - 1.2 INPUT POWER:
 - 1.2.1 AT +25°C: 2 WATTS MAX.
 - 1.2.2 AT +125°C: .05 WATTS MAX.
 - 1.3 VSWR:
 - 1.3.1 DC to 8.0GHZ: 1.20:1 MAX.
 - 1.3.2 8.0 to 12.4GHZ: 1.25:1 MAX
 - 1.4 IMPEDANCE: 50 OHMS
 - 1.5 OPERATING TEMP. RANGE:
 - 55°C to +125°C
- 2.0 MARKING:
 - 2.1 MARK UNIT AS SHOWN:
 - (REF: INK-02729-27-04)



DWG NO. WAS: 02714-01-00

| | | | |
|---|---|---|---|
| NOTICE: The information contained in this drawing is proprietary and must not be used without the permission of Emerson Network Power. UNLESS OTHERWISE NOTED DIMENSIONS ARE IN INCHES AND TOLERANCES ARE: 3 PLACE DECIMALS ±.005 2 PLACE DECIMALS ±.02 FRACTIONS ±1/64 PARALLELITY: T.I.R. _____ FLATNESS: T.I.R. _____ CONCENTRICITY: T.I.R. _____ ANGLES AND PERPENDICULARITY: ±1' | CAGE CODE 34078 | MIDWEST MICROWAVE | |
| | EMERSON Network Power Connectivity Solutions | | TITLE TERMINATION OUTLINE DRAWING |
| DRAWN/DATE A.BEATTY 1/23/91 | ENG./DATE G.KOZAK 1/25/91 | DRAWING NUMBER TRM-2107-MC-TNC-02-01 | REV. M |
| CHECKED/DATE D.ESTY 1/24/91 | APPROVED/DATE | SCALE: 5=1 | SHEET 1 of 1 |

| REV. | DESCRIPTION | DATE |
|------|------------------------|----------|
| - | RELEASED | 1/26/97 |
| A | ECR 1233 | 6/29/81 |
| B | ECR 6545 | 6/30/89 |
| B1 | CORP. TITLE | 12/31/89 |
| C | ECR 7129 | 2/20/89 |
| D | REDRAW ADD SPECS. | 1/23/91 |
| D1 | CORP F.C FROM 10 TO 02 | 6/10/91 |
| E | ECN 11006 | 9/12/91 |
| F | ECN 12202 | 11/9/92 |
| G | ECN 12918 | 9/9/93 |
| G1 | ADDED TITLEBLOCK | 11/2/05 |
| M | ECO 23234 | 1/24/11 |