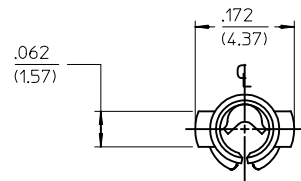
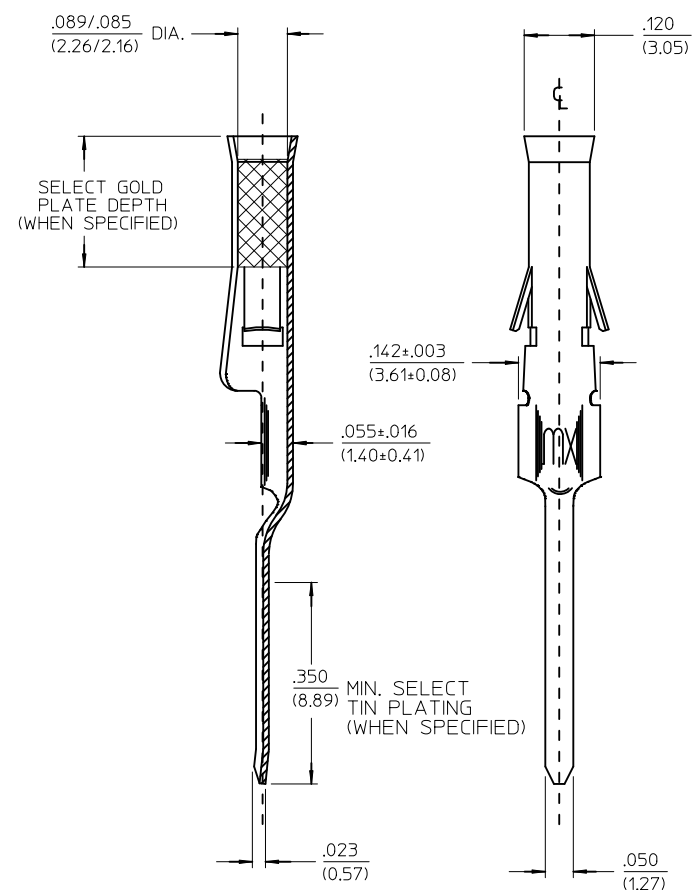
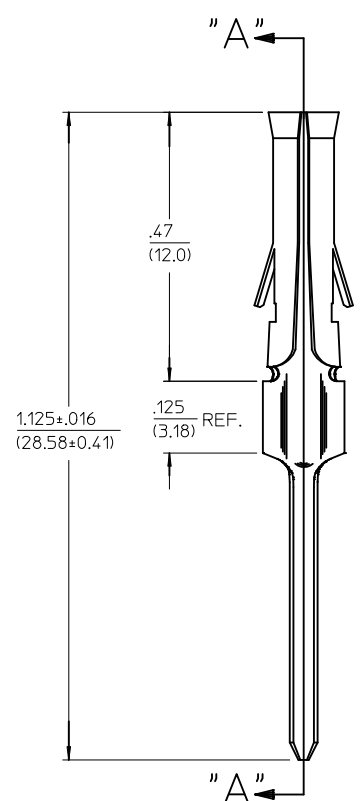


PART NO.	ENG. NO.	SUFFIX WAS
02-09-1134	1377-A(P909)L	-ATL
02-09-5132	1377-A(P228)L	-GL
50-34-8511	1377-A(P154)L	



**LEGEND**

1377-A(\*\*\*\*)\*  
 \* FORM L=LOOSE  
 P=PREPLATE BLANK=POSTPLATE  
 FINISH CODE



- NOTES:**
1. MATERIAL: BRASS
  2. FINISHES:
    - \* 909 HOT TIN DIP .000100/(0.00254) MIN.
    - \* 154 OVERALL TIN .000100/(0.00254) MIN. OVER .000050/(0.00127) MIN. NICKEL OVERALL.
    - \* 228 SELECT GOLD PLATE .000030/(0.00075) MIN. IN CONTACT AREA, SELECT TIN PLATE .000100/(0.00250) MIN. IN TAIL AREA OVER .000050/(0.00125) NICKEL OVERALL.
    - \* THE PRIMARY SHIPPING CARTON WILL BE LABELED, "COMPLIANT TO RoHS DIRECTIVE 2002/95/EC AND ELV ANNEX II OF DIRECTIVE 2000/53/EC", AND CARTONS WITHOUT THIS LABEL MAY CONTAIN PRODUCT WITH TIN-LEAD.
  3. PRODUCT SPECIFICATION: PS-02-09
  4. PACKAGING INFORMATION: NOT AVAILABLE.
  5. TERMINALS FOR USE WITH 0.093/(2.36) SERIES HOUSINGS.
  6. RECOMMENDED P.C. BOARD HOLE SIZE IS .062 .002/(1.57 0.05) DIA.
  7. INSERTION FORCE: 3.5 LBS. MAX. WHEN TERMINAL IS INSERTED INTO AN .093 SERIES HOUSING.

ADD P/N 1377 -A(P154)L EC NO: UCP2006-2524 DRWN: AELHAG 2006/05/15 CHKD: SCHMIDT 2006/05/22 APPR: FSMITH 2006/07/14 V1	QUALITY SYMBOLS	GENERAL TOLERANCES (UNLESS SPECIFIED)	SCALE 1:1	DESIGN UNITS INCH	THIRD ANGLE PROJECTION	REVISE ON CAD ONLY
	▽ - 0 ∇ - 0	mm	INCH	DIMENSION STYLE IN/MM		TITLE <b>P.C. TAIL TERMINAL FEMALE .093/(2.36)DIA</b>
		4 PLACES ± .010	± .010	DRAWN BY GC	DATE 1991/02/18	
		ANGULAR ±1/2°	DRAFT WHERE APPLICABLE	CHECKED BY RW	DATE 1991/02/18	MOLEX INCORPORATED MATERIAL NO. SEE CHART DOCUMENT NO. SD-1377-* SHEET NO. 1 OF 1
	MUST REMAIN WITHIN DIMENSIONS	THIS DRAWING CONTAINS INFORMATION THAT IS PROPRIETARY TO MOLEX INCORPORATED AND SHOULD NOT BE USED WITHOUT WRITTEN PERMISSION				