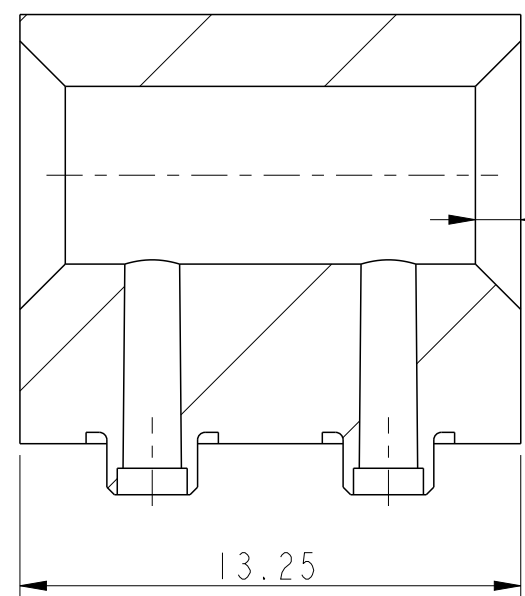
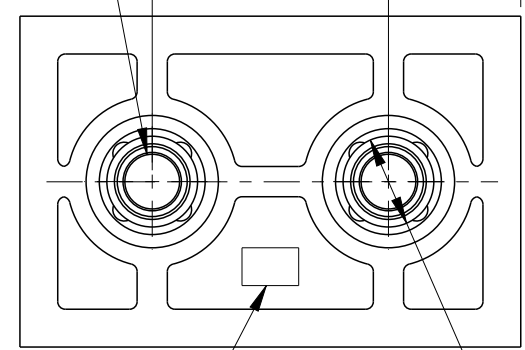
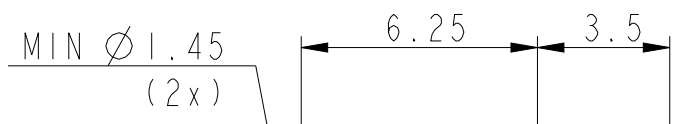
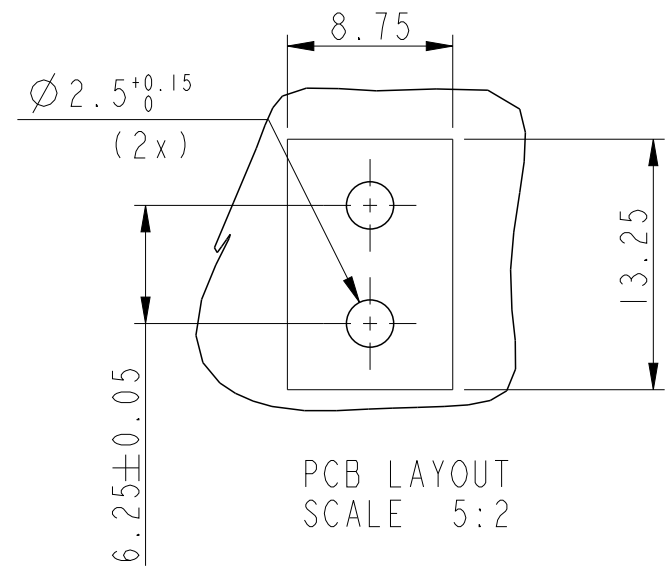
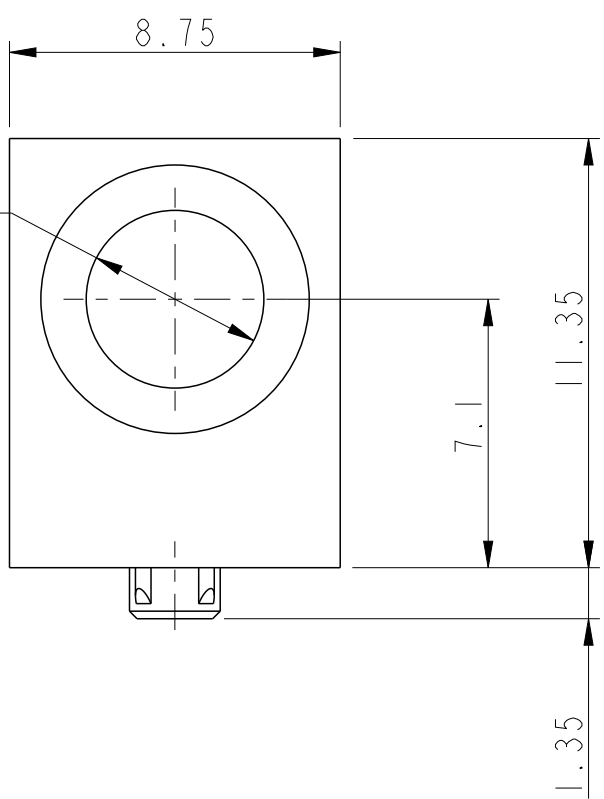


PART NUMBER
10035667-002LF



$\phi 4.7 \pm 0.05$

1.2x45°



Cavity ID
position
See note 7

$\phi 2.4$
(2x)

NOTES :

- Material PBT 30% GF; UL94 V0; Black
- Screw to use :
board thickness 1.6-2.4 mm : EJOT K18WNI452 (torx)
other board thickness : choose right length (rivet)
- Application :
1 - premount guide block on pcb holes
2 - push block in end position manually or with standard Metral flat rock tooling (not B-version)
3 - screw in the 2 screws with max torque 0.2 Nm
- Product requirements :
- 160 N perpendicular to board (see A)
- 160 N parallel to board (see B)
- Vibration, Shock, Rapid Change of Temperature, Climatic sequence acc. to IEC 61076-104 pl 1
- Minimum Order Quantity : 50 000 pcs
- Packaging : Bulk 500 pcs in plastic bag in box
- Marking : cavity no. only

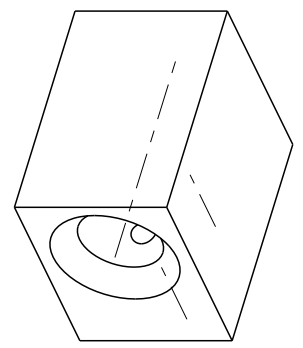
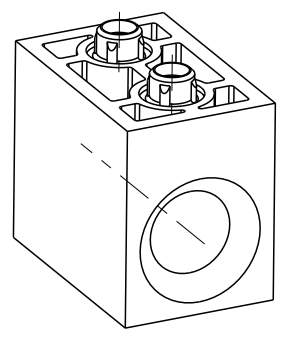
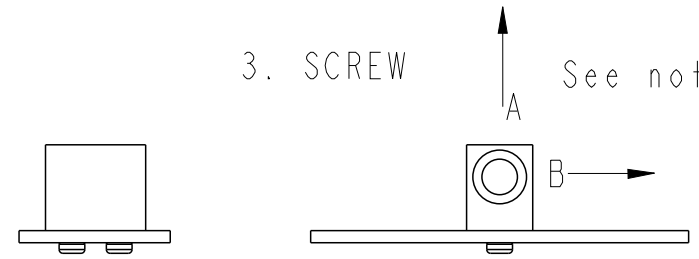
1. PREMOUNT



2. MOUNT TO END POSITION



3. SCREW



spec ref	*	dr	Louis Ng	2010/10/28	projection	mm	size	A3	scale	1:1
tolerance std	ISO 406 ISO 1101	eng	De-Feng, Qin	2011/11/09			ecn no	Released		
TOLERANCES UNLESS OTHERWISE SPECIFIED		chr	Charlie Liu	2011/11/10				product family	METRAL	rel level
surface	ISO 1302	appr	Pei-Ming Zheng	2011/11/10			title BOARD GUIDING METRAL	dwg no 10035667-002	rev E	cat. no. 10035667-002LF
linear	0.X ±0.10 0.XX ±0.05 0.XXX ±0.005			Product - Customer Drw		sheet 1 of 1				
angular	0° ± 2°	www.fci.com		PDS: Rev :E		STATUS:Released		Printed: Nov 15, 2011		



Copyright FCI.