

NOTES:

1.0 SPECIFICATIONS:

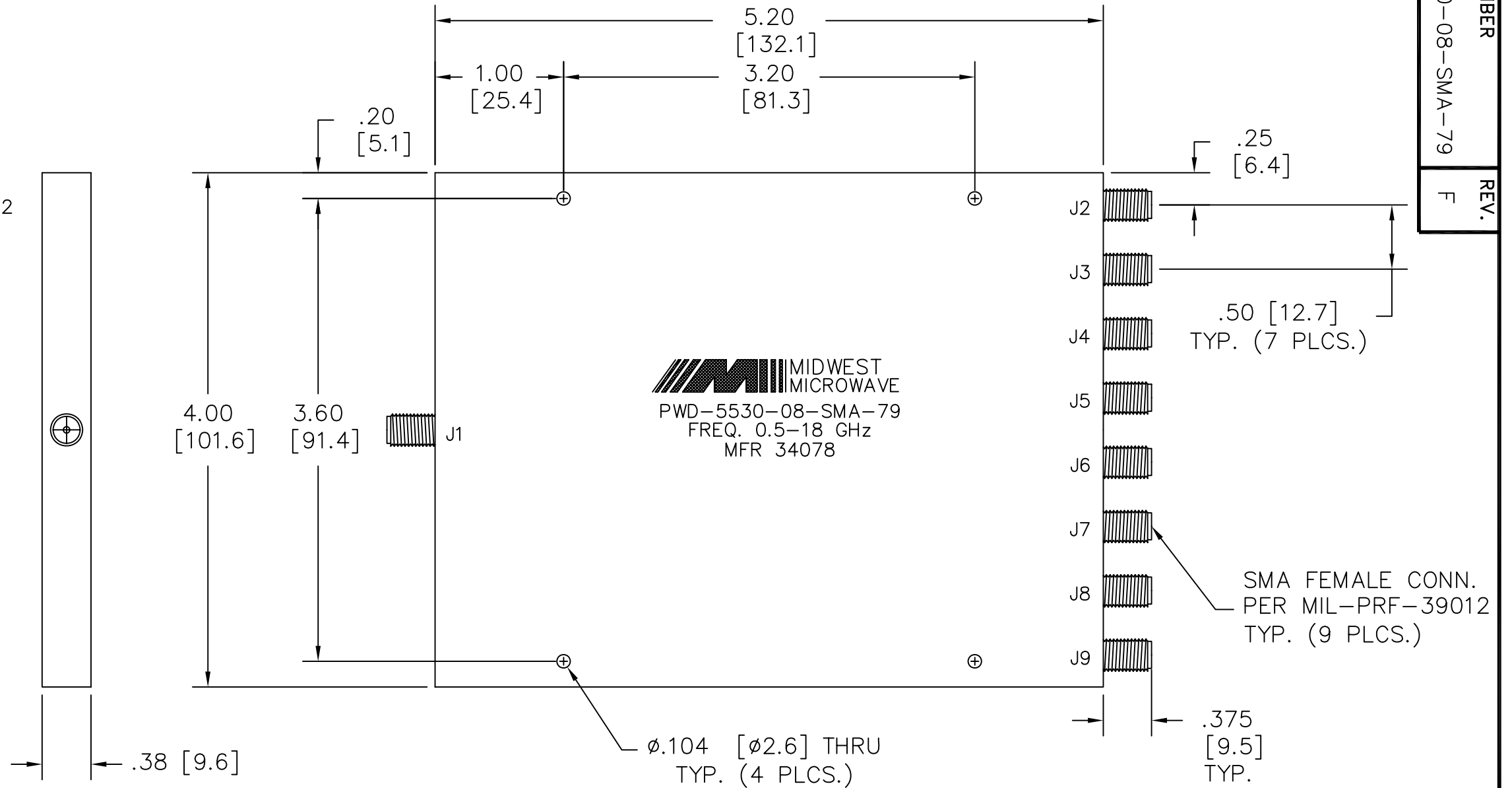
- 1.1 FREQUENCY RANGE: 0.5 to 18.0 GHz
- 1.2 INSERTION LOSS:  $(1.0+0.25f[\text{GHz}])\text{dB}$  MAX.
- 1.3 AMPLITUDE BALANCE: 1.0dB MAX.
- 1.4 PHASE BALANCE: 15° MAX.
- 1.5 VSWR: 1.50:1 MAX.
- 1.6 ISOLATION: 15dB MIN.
- 1.7 INPUT POWER: 30 WATTS MAX.

2.0 FINISHING:

GREY PER MIL-E-15090 TYPE II, CLASS 2  
 OVER MIL-C-5541 CLASS 3A  
 MEETS MIL-F-14072  
 MEETS MIL-E-5400

2.1 MARKING: MARK UNIT AS SHOWN  
 (REF.: SLK-09400-82-01)

3.0 DIMENSIONS IN BRACKETS ARE  
 IN MILLIMETERS.



MODEL NUMBER  
 PWD-5530-08-SMA-79  
 REV. F

REV.	DESCRIPTION	DATE
-	RELEASED	1/17/95
A	ECN 15972	5/1/97
B	ECN 17109	6/8/99
C	ECN 17500	4/24/00
D	ECN 18670	8/1/02
E	ECN 19794	4/22/04
F	ECN 21536	10/24/07

UNLESS OTHERWISE NOTED DIMENSIONS ARE IN INCHES AND TOLERANCES ARE:  3 PLACE DECIMALS ±.005 2 PLACE DECIMALS ±.02 FRACTIONS ±1/64 PARALLELITY: T.I.R. _____ FLATNESS: T.I.R. _____ CONCENTRICITY: T.I.R. _____ ANGLES AND PERPENDICULARITY: ±1°		FSCM NO. <b>34078</b>		<b>MIDWEST MICROWAVE</b>	
		NOTICE: The information contained in this drawing is proprietary and must not be used without the permission of Midwest Microwave		TITLE POWER DIVIDER	
DRAWN/DATE A. BEATTY 1/17/95		ENG./DATE P. GOODMAN 1/17/95		DRAWING NUMBER PWD-5530-08-SMA-79	
CHECKED/DATE		APPROVED/DATE		SCALE: FULL SHEET 1 of 1	