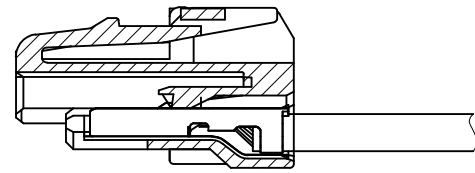
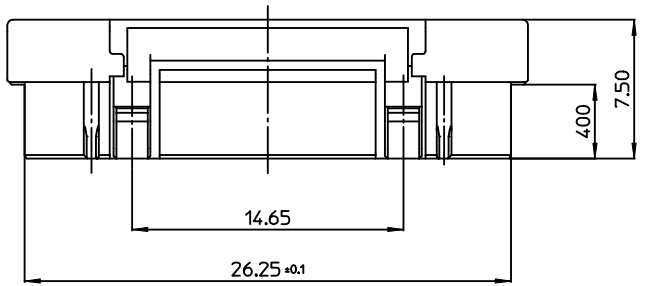
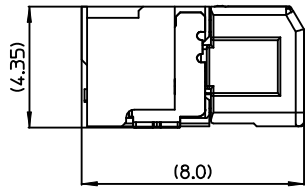
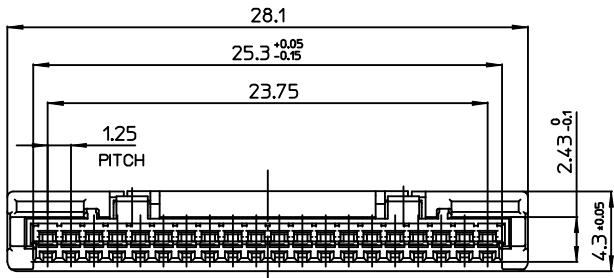
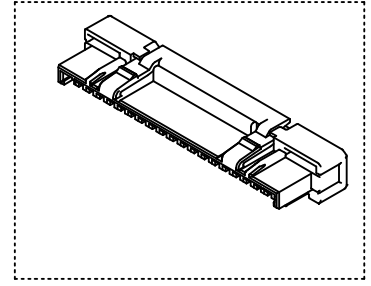


10 9 8 7 6 5 4 3 2 1



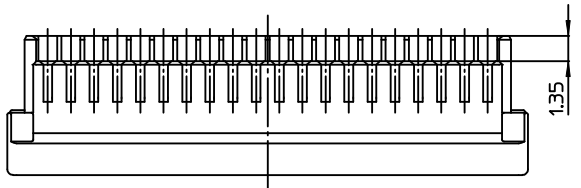
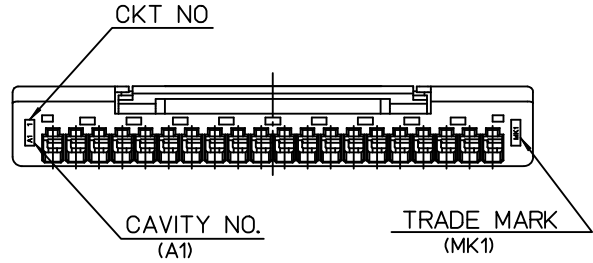
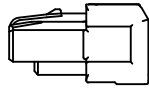
**TERMINAL ASSEMBLY DRAWING**  
[REFERENCE]



**MATED WITH HEADER ASSEMBLY**  
[REFERENCE]

NOTES.

1. MATED WITH : 104091-2020
2. MATERIAL : LCP, VECTRA E471i  
GLASS FILLED, UL94V-0,  
HALOGEN FREE, NATURAL COLOR
3. APPLICABLE TERMINAL : 104521-6001
4. PRODUCT SPECIFICATION : PS-104091-001



RELEASED  
EC NO: KOR2012-0022  
DRWN: JHPARK01 2010/06/10  
CHKD: SH. CHU  
APPR: YUNSIKKIM 2011/09/30

QUALITY SYMBOLS	▽=0	GENERAL TOLERANCES (UNLESS SPECIFIED)	DIMENSION STYLE	
	▽=0		MM ONLY	
			SCALE	DESIGN UNITS
			4:1	METRIC
			THIRD ANGLE PROJECTION	
			TITLE	
			1.25 W-T-B CONN PLUG HOUSING-20P	
			APPROVED BY DATE	
			YUNSIKKIM 2011/09/30	
			MATERIAL NO. DOCUMENT NO.	
			1040922000 SD-104092-001	
			SHEET NO.	
			1 OF 01	

ORDER No.	104092-2000
DRAWN BY	DATE
JH.PARK	2010/04/11
CHECKED BY	DATE
SH. CHU	2010/04/11
APPROVED BY DATE	
YUNSIKKIM 2011/09/30	
MATERIAL NO. DOCUMENT NO.	
1040922000 SD-104092-001	
SHEET NO.	
1 OF 01	

**MOLEX INCORPORATED**

DRAFT WHERE APPLICABLE MUST REMAIN WITHIN DIMENSIONS

THIS DRAWING CONTAINS INFORMATION THAT IS PROPRIETARY TO MOLEX INCORPORATED AND SHOULD NOT BE USED WITHOUT WRITTEN PERMISSION

9 8 7 6 5 4 3 2 1