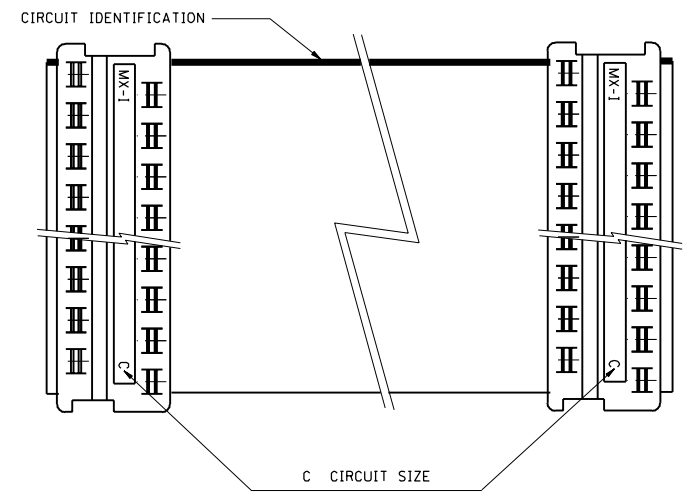
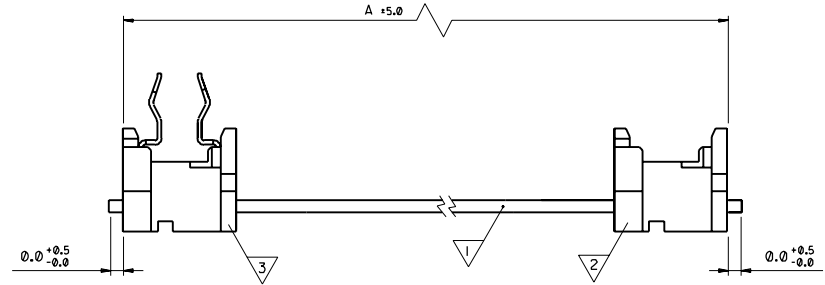


PART NUMBER	ITEM	COMPONENT	DESCRIPTION	QUANTITY	A	C	NOTE
MOLEX 92313-0001	▽	99026-0028	6 CKT 28 AWG STRANDED TINNED RIBBON CABLE	1	370.0	6 CCT	4, 5
SEMI-TECH 96010019	▽	90327-0357	PICOFLEX FEMALE IDT CONNECTOR	1			1, 2, 5
	▽	90584-2306	PICOFLEX BOARD-IN IDT CONNECTOR	1			1, 3, 5
MOLEX 92313-0002	▽	99026-0003	12 CKT 28 AWG STRANDED TINNED RIBBON CABLE	1	500.0	12 CCT	4, 5
SEMI-TECH 96010026	▽	90327-0369	PICOFLEX FEMALE IDT CONNECTOR	1			1, 2, 5
	▽	90584-2312	PICOFLEX BOARD-IN IDT CONNECTOR	1			1, 3, 5
MOLEX 92313-0003	▽	99026-0027	8 CKT 28 AWG STRANDED TINNED RIBBON CABLE	1	600.0	8 CCT	4, 5
SEMI-TECH 96010033	▽	90327-0361	PICOFLEX FEMALE IDT CONNECTOR	1			1, 2, 5
	▽	90584-2308	PICOFLEX BOARD-IN IDT CONNECTOR	1			1, 3, 5
MOLEX 92313-0004	▽	99026-0028	6 CKT 28 AWG STRANDED TINNED RIBBON CABLE	1	200.0	6 CCT	4, 5
SEMI-TECH 96010040	▽	90327-0357	PICOFLEX FEMALE IDT CONNECTOR	1			1, 2, 5
	▽	90584-2306	PICOFLEX BOARD-IN IDT CONNECTOR	1			1, 3, 5
MOLEX 92313-0005	▽	99026-0025	10 CKT 28 AWG STRANDED TINNED RIBBON CABLE	1	564.0	10 CCT	4, 5
SEMI-TECH 96010004	▽	90327-0365	PICOFLEX FEMALE IDT CONNECTOR	1			1, 2, 5
	▽	90584-2310	PICOFLEX BOARD-IN IDT CONNECTOR	1			1, 3, 5
MOLEX 92313-0010	▽	99026-0025	10 CKT 28 AWG STRANDED TINNED RIBBON CABLE	1	414.0	10 CCT	4, 5
SEMI-TECH 96010002	▽	90327-0365	PICOFLEX FEMALE IDT CONNECTOR	1			1, 2, 5
	▽	90584-2310	PICOFLEX BOARD-IN IDT CONNECTOR	1			1, 3, 5
MOLEX 92313-0011	▽	99026-0025	10 CKT 28 AWG STRANDED TINNED RIBBON CABLE	1	444.0	10 CCT	4, 5
SEMI-TECH 96010003	▽	90327-0365	PICOFLEX FEMALE IDT CONNECTOR	1			1, 2, 5
	▽	90584-2310	PICOFLEX BOARD-IN IDT CONNECTOR	1			1, 3, 5
MOLEX 92313-0006	▽	99026-0028	6 CKT 28 AWG STRANDED TINNED RIBBON CABLE	1	564.0	6 CCT	4, 5
SEMI-TECH 96010020	▽	90327-0357	PICOFLEX FEMALE IDT CONNECTOR	1			1, 2, 5
	▽	90584-2306	PICOFLEX BOARD-IN IDT CONNECTOR	1			1, 3, 5
MOLEX 92313-0007	▽	99026-0027	8 CKT 28 AWG STRANDED TINNED RIBBON CABLE	1	214.0	8 CCT	4, 5
SEMI-TECH 96010045	▽	90327-0361	PICOFLEX FEMALE IDT CONNECTOR	1			1, 2, 5
	▽	90584-1308	PICOFLEX BOARD-IN IDT CONNECTOR	1			1, 3, 5
MOLEX 92313-0008	▽	90327-0003	12 CKT 28 AWG STRANDED TINNED RIBBON CABLE	1	214.0	12 CCT	4, 5
SEMI-TECH 96010046	▽	90327-0369	PICOFLEX FEMALE IDT CONNECTOR	1			1, 2, 5
	▽	90584-2312	PICOFLEX BOARD-IN IDT CONNECTOR	1			1, 3, 5
MOLEX 92313-0009	▽	99026-0027	8 CKT 28 AWG STRANDED TINNED RIBBON CABLE	1	164.0	8 CCT	4, 5
SEMI-TECH 96010063	▽	90327-0361	PICOFLEX FEMALE IDT CONNECTOR	1			1, 2, 5
	▽	90584-1308	PICOFLEX BOARD-IN IDT CONNECTOR	1			1, 3, 5



- NOTES:
1. SEE PRODUCT SPECIFICATIONS PS-99020-0011.
 2. SEE TERMINATION SPECIFICATION ES-99033-0001.
 3. SEE TERMINATION SPECIFICATION ES-99033-0002.
 4. SEE CABLE SPECIFICATION ES-99027-0006.
 5. HARNESSES TO BE 100% ELECTRICALLY TESTED.

ORIGINAL ISSUE ECN: E71059 97-06-04 AMC	DIMENSIONS SHOWN (METRIC) INCH UNLESS OTHERWISE SPECIFIED TOLERANCES: ANGULAR ± 0.5° INCH (METRIC) 3 PLACE ± .001 ± .001 2 PLACE ± .005 ± .005 1 PLACE ± .015 ± .015 HOLE WHERE APPLICABLE MUST REMAIN WITHIN DIMENSIONS	DRAWN BY AMC	REVISE ONLY ON CAD SYSTEM		SHL	REV.
			CAD/CAM FILE NAME: SDA-92313.DGN		THIS DRAWING CONTAINS INFORMATION THAT IS PROPRIETARY TO MOLEX INC. & SHOULD NOT BE USED WITHOUT WRITTEN PERMISSION	
LTR	DESIGN DIMENSION (MM) <input type="checkbox"/> IN.	SCALE 1 : 1	TITLE PICOFLEX HARNESS 1.27 mm PITCH (VARIOUS CCT SIZES)		SHEET NO. DATE	
	EQUIVALENT DIMENSION (SECONDARY) <input type="checkbox"/> IN.		MOLEX EUROPE		IOF 1	97/04/24
C			PART NO. SEE CHART	DWG NO. SDA-92313	SIZE C	

PART NO. SEE CHART
DWG NO. SDA-92313