

REVISIONS			
REV	DESCRIPTION, ECN, EAR NO.	DATE	APP'D
A	PROPOSAL	JUN15/12	A.G
B	CORRECT GOLD PLATING SPEC.	SEP29/12	L.CHAN
C	CORRECT "AMPHENOL" LOGO DIRECTION	OCT29/13	L.CHAN
D	SPECIFIC THE 10P10C DRAWING	NOV15/13	L.CHAN
E	SPECIFIC THE SHIELDED DRAWING	APR10/14	L.CHAN
F	FIX THE ERROR PER ECN 160898	JAN 03/17	L.CHAN

1. MATERIALS:

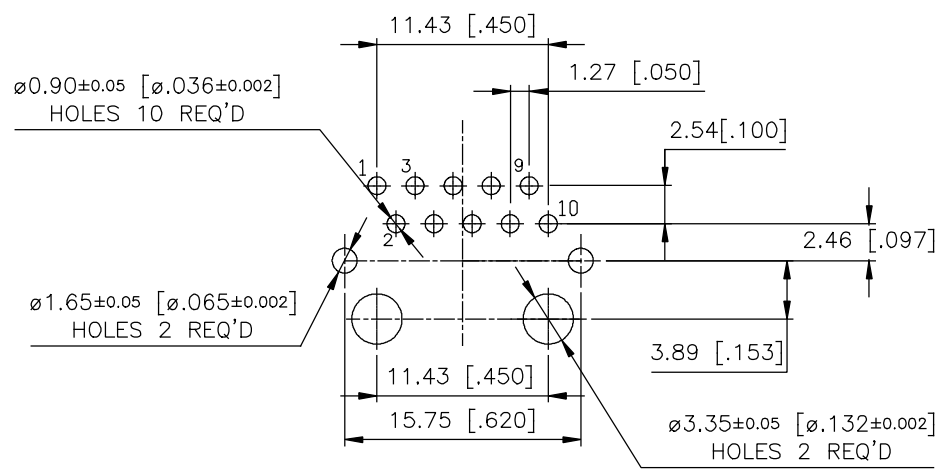
PLASTIC HOUSING: THERMOPLASTIC PER MATERIAL OPTION IN PART NO.
 FLAMMABILITY RATING UL 94V-0
 COLOUR: BLACK

CONTACTS: PHOSPHOR BRONZE
 PLATING: REFER TO PART NO. FOR GOLD THICKNESS ON MATING SURFACES.
 50 u" [1.27 MICRONS]
 MIN. NICKEL UNDERPLATE
 100 u" [2.54 MICRONS]
 MIN. MATTE TIN ON CONTACT TAILS.

SHIELD: STAINLESS STEEL WITH TIN DIPPED PCB TAILS.

AMPHENOL PART NUMBER: RJE74-1AA-1X11-X

NUMBER OF POSITION A= 10 POSITION
 NUMBER OF CONTACT A= 10 CONTACT
 SHIELD OPTION 1= FULL SHIELD
 BLANK= PBT, TRAY PACKAGING, W/O MYLAR
 A= HIGH TEMP. MATERIAL, TRAY PACKAGING, W/O MYLAR
 H= HIGH TEMP. MATERIAL TAPE/REEL PACKAGING, WITH MYLAR
 GOLD PLATING
 1 = 6u" 3 = 30u"
 2 = 15u" 4 = 50u"



LOCATE HOLES
 $\oplus \text{ } \varnothing .13 [0.005]$
 POSITION DIMENSIONS ARE BASIC

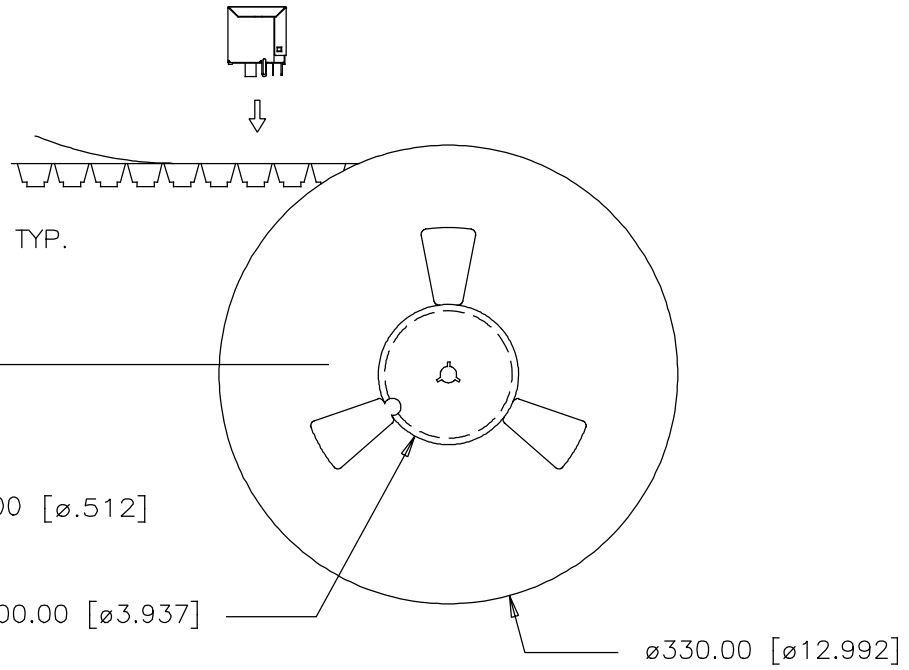
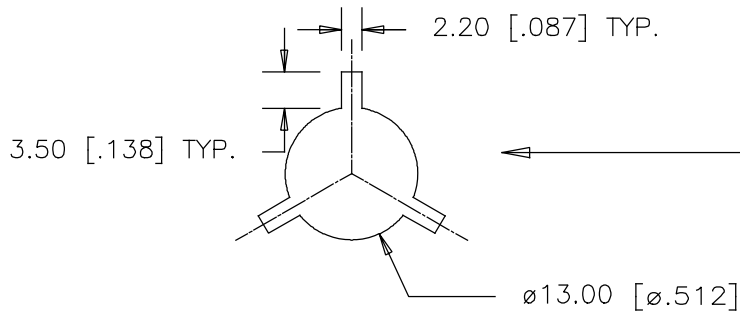
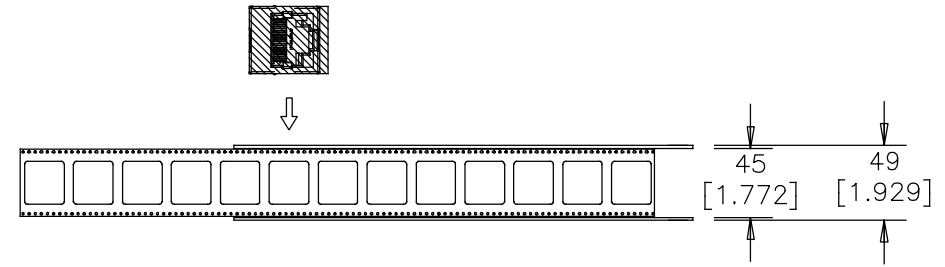
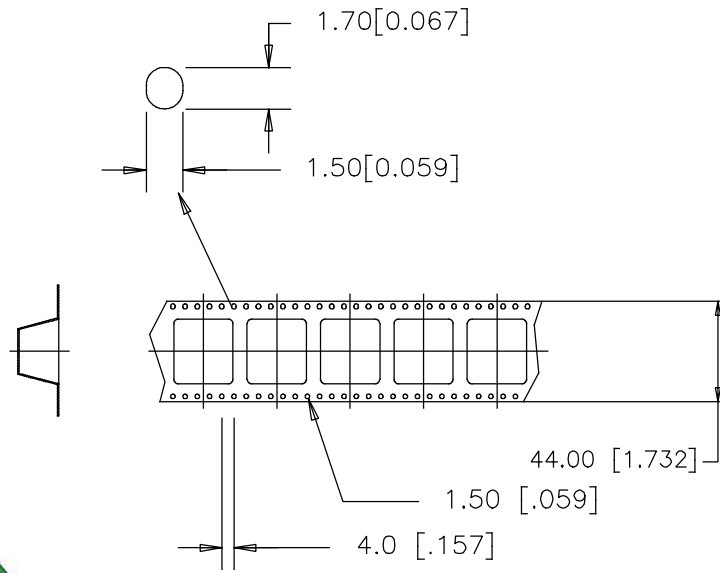
RECOMMENDED P.C.B LAYOUT
 (COMPONENT SIDE OF BOARD
 TOLERANCES: +/- 0.05 [.002],
 BASED ON PRODUCT WITH SHIELD)

PART NUMBER	DIM A	DIM B	MYLAR OPTIONS
RJE74-1AA-1X11	16.61 [.654]	16.26 [.640]	WITHOUT MYLAR
RJE74-1AA-1X11-A	16.61 [.654]	16.26 [.640]	WITHOUT MYLAR
RJE74-1AA-1X11-H	16.7 [.657]	16.35 [.644]	WITH MYLAR

UNLESS SPECIFIED OTHERWISE	DRAWN B.COPPING	JUN15/12
PRIMARY UNITS MILLIMETERS	CHECKED	
SECONDARY INCHES	M.E. APP'D	
REFERENCE IN PARENTHESES	Q.A. APP'D	
GENERAL TOLERANCES	DWG APP'D A.GREEN	JUN15/12
1 DECIMAL PLACE ±0.38	ENG. REL NO.	
2 DECIMAL PLACES ±0.25	REF.	
3 DECIMAL PLACES		
ANGULAR DEGREES ±1.5°	THIRD ANGLE PROJECTION	DO NOT SCALE DRAWING

Amphenol Canada Corp. www.amphenolcanada.com	
MODULAR JACK, 10 POSITION 10 CONTACTS, WITH SHIELD, KAPTON TAPE OPTION, WITH KEYING FEATURE—RoHS COMPLIANT	
DWG NO. P-RJE74-1AA-1X11-X	REV F
CODE ID NO. 03554	DWG SIZE: C
SCALE: N/A	SHEET 1 OF 2

REVISIONS			
REV	DESCRIPTION, ECN, EAR NO.	DATE	APP'D
A	PROPOSAL	JUN15/12	A.G
B	CORRECT GOLD PLATING SPEC	SEP29/12	L.CHAN
C	CORRECT "AMPHENOL" LOGO DIRECTION	OCT29/13	L.CHAN
D	SPECIFIC THE 10P10C DRAWING	NOV15/13	L.CHAN
E	SPECIFIC THE SHIELDED DRAWING	APR10/14	L.CHAN



PACKAGING NOTES:

- ONE REEL SHOULD HOLD 85 CONNECTORS.
- 10 EMPTY CAVITIES FOR BOTH TOP AND BOTTOM OF THE CARRIER.
- A FULLY LOADED CARTON SHOULD CONTAIN 5 REELS (425 PCS) OF CONNECTOR.

UNLESS SPECIFIED OTHERWISE	DRAWN	B.COPPING	JUN15/12
PRIMARY UNITS MILLIMETERS	CHECKED		
SECONDARY INCHES	M.E. APP'D		
REFERENCE IN PARENTHESES	Q.A. APP'D		
	DWG APP'D	A.GREEN	JUN15/12
	ENG. REL. NO.		
	REF.		
	THIRD ANGLE PROJECTION		
	DO NOT SCALE DRAWING		

Amphenol Canada Corp. www.amphenolcanada.com	
MODULAR JACK, 10 POSITION 10 CONTACTS, WITH SHIELD, KAPTON TAPE OPTION, WITH KEYING FEATURE—RoHS COMPLIANT	
DWG NO.	P-RJE74-1AA-1X11-X
CODE ID NO.	03554
DWG SIZE:	c
SCALE:	N/A
SHEET	2 OF 2