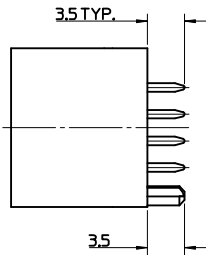
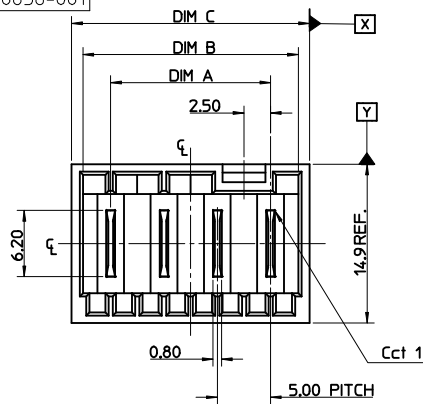
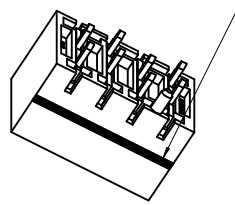


EM-90858-001

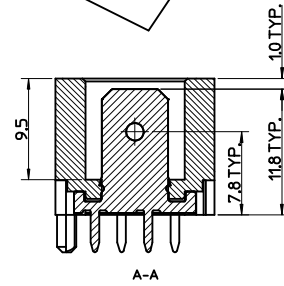
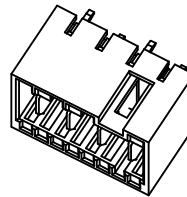
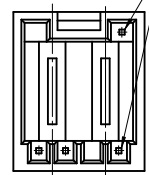
PCB PIN POLARISATION  
OPTION A AND B



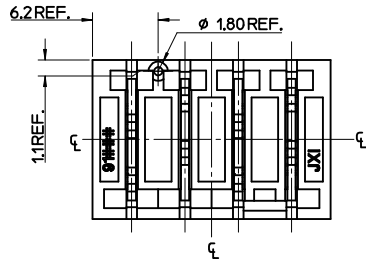
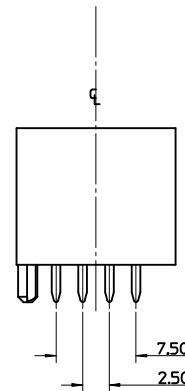
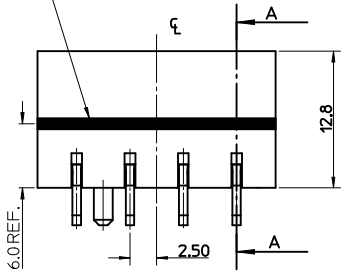
COLOUR STRIPE OPTION



HOLE ON SOME TOOLED VERSIONS



COLOUR STRIPE OPTION

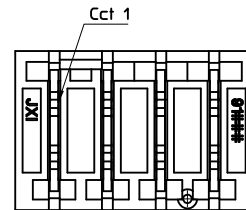


NOTES:

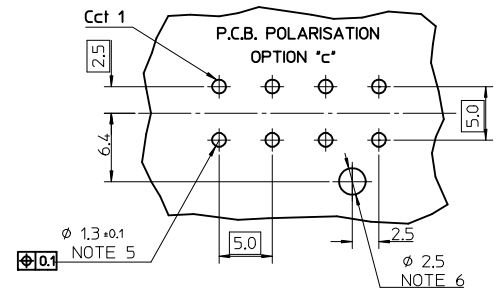
- MATERIALS  
HOUSING: PA 66, UL94 V-2 HALOGEN FREE  
TERMINAL: BRASS 0.80 REF. THICK  
PLATING: OPTIONAL (SEE CHARTS SHEET 2)  
TIN PLATING OPTION : 34µm TIN OVER  
1.27µm NICKEL ALL AREAS.  
SELECTIVE SILVER  
CONTACT AREA : 24µm SILVER OVER 1.27µm  
NICKEL. ALL OTHER AREAS FLASH OF SILVER 0.10µm
- PRODUCT CONFORMS TO SPECIFICATION PS-99020-0037/39
- MATES WITH MOLEX 91338, 90833, 90835, 91777, 91778, 91779, 91954 & 92000.
- SEE PACKAGING SPECIFICATION PK-90858-001  
TWO PACKAGING OPTIONS  
\*A\* LOOSE IN POLYBAGS IN SHIPPING CARTON  
\*B\* IN TUBES IN SHIPPING CARTON  
SEE TABLES IN FOLLOWING SHEETS FOR PACKAGING TYPE FOR EACH PART NUMBER
- PLATED THRU HOLE
- NON-PLATED THRU HOLE
- RECOMMENDED PCB THICKNESS: 15mm REF
- PCB VIEW IS FROM SOLDER SIDE

CCT	DIM A	DIM B	DIM C	TOL
2	5.00	10.20	12.30	
3	10.00	15.20	17.30	
4	15.00	20.20	22.30	
5	20.00	25.20	27.30	
6	25.00	30.20	32.30	
7	30.00	35.20	37.30	
8	35.00	40.20	42.30	
9	40.00	45.20	47.30	
10	45.00	50.20	52.30	
11	50.00	55.20	57.30	
12	55.00	60.20	62.30	+/-0.30

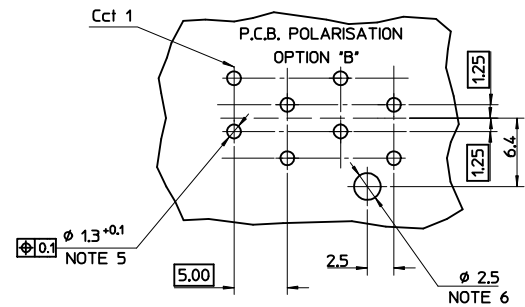
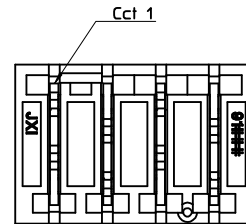
OPTION "C"



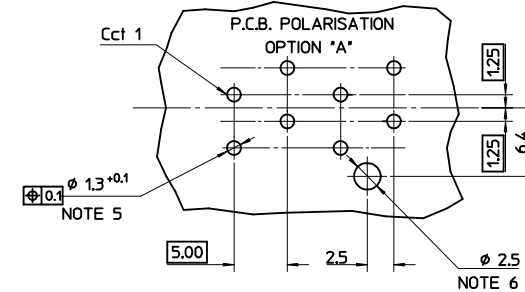
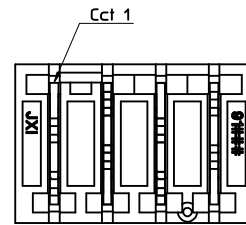
PCB LAYOUT



OPTION "B"



OPTION "A"



NOTE 7 PCB DIM CHANGE  
EC NO: IFC2016-1580  
DRAWN: CRAMER 2016/05/24  
CHKD: CHKD  
APPR: BRUTTLE 2016/08/30

QUALITY SYMBOLS  
▽=0  
▽=0

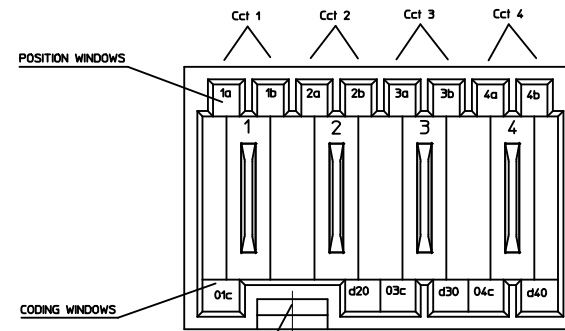
GENERAL TOLERANCES (UNLESS SPECIFIED)  
mm INCH  
4 PLACES ± --- ± ---  
3 PLACES ± --- ± ---  
2 PLACES ± 0.1 ± ---  
1 PLACE ± 0.2 ± ---  
ANGULAR ± 2°  
DRAFT WHERE APPLICABLE  
MUST REMAIN WITHIN DIMENSIONS

DIMENSION STYLE  
MM ONLY  
DRAWN BY DATE  
B. RUTTLE 2006/10/04  
CHECKED BY DATE  
T. TOURSH 2006/10/04  
APPROVED BY DATE  
BMAGUIRE 2011/02/07  
MATERIAL NO.  
SEE SHEET 2

SCALE 1:1  
DESIGN UNITS METRIC  
THIRD ANGLE PROJECTION  
TITLE  
RAST 5 VERT HDR  
PA 66 HOUSING  
HALOGEN FREE  
molex MOLEX INCORPORATED  
DOCUMENT NO. SD-93319-001  
SHEET NO. 1 OF 2  
THIS DRAWING CONTAINS INFORMATION THAT IS PROPRIETARY TO MOLEX INCORPORATED AND SHOULD NOT BE USED WITHOUT WRITTEN PERMISSION

# 4 CIRCUIT

SEE CODE DESIGNATION TABLE FOR NUMBERING FORMAT WHEN ADDING NEW PART NUMBERS											P.C.B. OPTION	PACKAGING OPTION *	COLOUR STRIPE
PART NO. (TIN)	TERM NO. (TIN)	MOLEX HOUSING NO.	COLOUR	UNBLOCKED POSITION KEYS	UNBLOCKED CODING KEYS	LATCH POSITION	CONFIGURATION (SEE NOTES)	TERMINAL VOID CKT	TERM NO. (SILVER)	PART NO. (SILVER)			
93319-1254	91703-0002	93318-2000	NATURAL	1b	03c d40	1/2 3/4		NONE	91703-0003	93319-1999	A	A	NONE



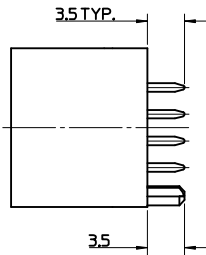
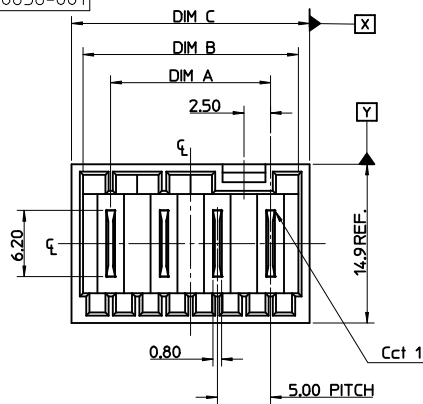
KEYING, CODING & LATCH POSITION  
(4CCT EXAMPLE SHOWN)  
VIEW INMATING DIRECTION

NOTES:  
\* SEE SHEET 1 NOTE 4

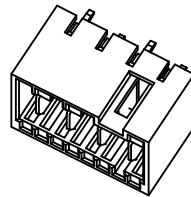
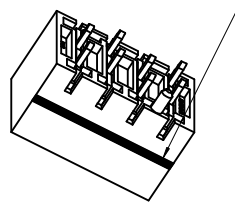
<b>SEE SHEET 1</b> EC NO: PC2076-1580 CHKD: DRW:WZGRAMER APPR:BRUTLE 2016/05/24 2016/08/30	QUALITY SYMBOLS	GENERAL TOLERANCES (UNLESS SPECIFIED)	DIMENSION STYLE	SCALE	DESIGN UNITS	THIRD ANGLE PROJECTION
	▽=0	m   INCH	MM ONLY	1:1	METRIC	
	▽=0	4 PLACES ± ---   ± ---	DRAWN BY	DATE	TITLE	
		3 PLACES ± ---   ± ---	B. RUTLE	2006/10/04	RAST 5 VERT HDR PA 66 HOUSING HALOGEN FREE	
	2 PLACES ± 0.1   ± ---	1 PLACE ± 0.2   ± ---	CHECKED BY	DATE	MATERIAL NO.	
	ANGULAR ± 2 °		T. TOURSH	2006/10/04	DOCUMENT NO.	
	DRAFT WHERE APPLICABLE MUST REMAIN WITHIN DIMENSIONS		APPROVED BY	DATE	SD-93319-001	
			BMAGUIRE	2011/02/07	SHEET NO.	
					2 OF 2	
					THIS DRAWING CONTAINS INFORMATION THAT IS PROPRIETARY TO MOLEX INCORPORATED AND SHOULD NOT BE USED WITHOUT WRITTEN PERMISSION	

EM-90858-001

PCB PIN POLARISATION  
OPTION A AND B

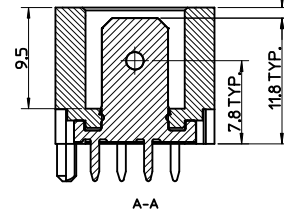
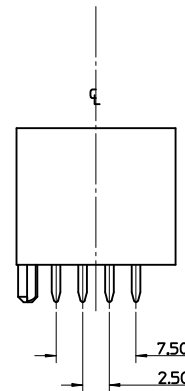
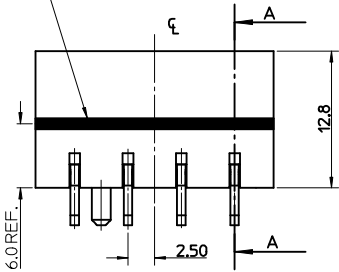


COLOUR STRIPE OPTION



HOLE ON SOME  
TOOLED VERSIONS

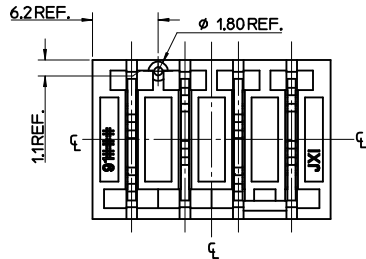
COLOUR STRIPE OPTION



CCT	DIM A	DIM B	DIM C	TOL
2	5.00	10.20	12.30	
3	10.00	15.20	17.30	
4	15.00	20.20	22.30	
5	20.00	25.20	27.30	
6	25.00	30.20	32.30	
7	30.00	35.20	37.30	
8	35.00	40.20	42.30	
9	40.00	45.20	47.30	
10	45.00	50.20	52.30	
11	50.00	55.20	57.30	
12	55.00	60.20	62.30	+/-0.30

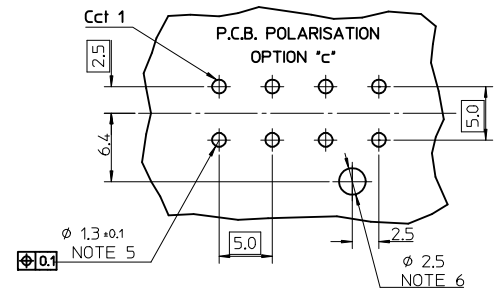
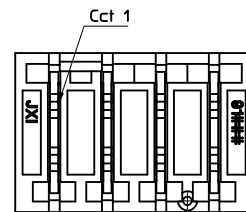
NOTES:

- MATERIALS  
HOUSING: PA 66, UL94 V-2 HALOGEN FREE  
TERMINAL: BRASS 0.80REF. THICK  
PLATING: OPTIONAL (SEE CHARTS SHEET 2)  
TIN PLATING OPTION : 34µm TIN OVER  
1.27µm NICKEL ALL AREAS.  
SELECTIVE SILVER  
CONTACT AREA : 24µm SILVER OVER 1.27µm  
NICKEL. ALL OTHER AREAS FLASH OF SILVER 0.10µm
- PRODUCT CONFORMS TO SPECIFICATION PS-99020-0037/39
- MATES WITH MOLEX 91338, 90833, 90835, 91777, 91778, 91779, 91954 & 92000.
- SEE PACKAGING SPECIFICATION PK-90858-001  
TWO PACKAGING OPTIONS  
\*A\* LOOSE IN POLYBAGS IN SHIPPING CARTON  
\*B\* IN TUBES IN SHIPPING CARTON  
SEE TABLES IN FOLLOWING SHEETS FOR PACKAGING TYPE FOR EACH PART NUMBER
- PLATED THRU HOLE
- NON-PLATED THRU HOLE
- RECOMMENDED PCB THICKNESS: 15mm REF
- PCB VIEW IS FROM SOLDER SIDE

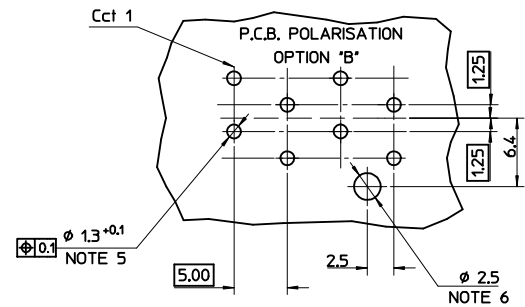
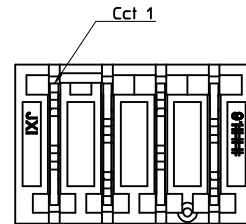


OPTION "C"

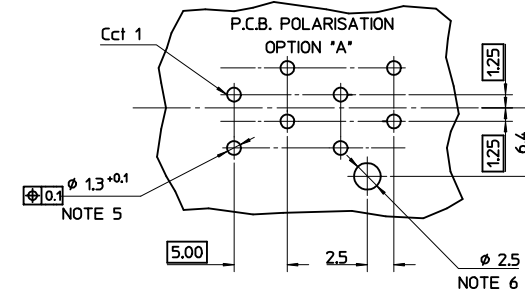
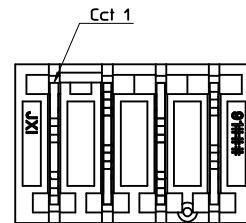
PCB LAYOUT



OPTION "B"



OPTION "A"



NOTE 7 PCB DIM CHANGE  
EC NO: IFC2016-1580  
DRAWN: CRAMER 2016/05/24  
CHKD: CHKD  
APPR: BRUTTLE 2016/08/30

QUALITY SYMBOLS  
=0  
=0

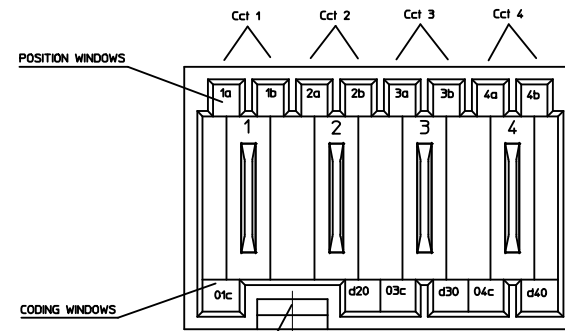
GENERAL TOLERANCES (UNLESS SPECIFIED)  
mm INCH  
4 PLACES ± --- ± ---  
3 PLACES ± --- ± ---  
2 PLACES ± 0.1 ± ---  
1 PLACE ± 0.2 ± ---  
ANGULAR ± 2°  
DRAFT WHERE APPLICABLE  
MUST REMAIN WITHIN DIMENSIONS

DIMENSION STYLE  
MM ONLY  
DRAWN BY B. RUTTLE  
DATE 2006/10/04  
CHECKED BY T. TOURSH  
DATE 2006/10/04  
APPROVED BY BMAGUIRE  
DATE 2011/02/07  
MATERIAL NO.  
SEE SHEET 2

SCALE 1:1  
DESIGN UNITS METRIC  
THIRD ANGLE PROJECTION  
TITLE  
RAST 5 VERT HDR  
PA 66 HOUSING  
HALOGEN FREE  
molex MOLEX INCORPORATED  
DOCUMENT NO. SD-93319-001  
SHEET NO. 1 OF 2  
THIS DRAWING CONTAINS INFORMATION THAT IS PROPRIETARY TO MOLEX INCORPORATED AND SHOULD NOT BE USED WITHOUT WRITTEN PERMISSION

# 4 CIRCUIT

SEE CODE DESIGNATION TABLE FOR NUMBERING FORMAT WHEN ADDING NEW PART NUMBERS											P.C.B. OPTION	PACKAGING OPTION *	COLOUR STRIPE
PART NO. (TIN)	TERM NO. (TIN)	MOLEX HOUSING NO.	COLOUR	UNBLOCKED POSITION KEYS	UNBLOCKED CODING KEYS	LATCH POSITION	CONFIGURATION (SEE NOTES)	TERMINAL VOID CKT	TERM NO. (SILVER)	PART NO. (SILVER)			
93319-1254	91703-0002	93318-2000	NATURAL	1b	03c d40	1/2 3/4		NONE	91703-0003	93319-1999	A	A	NONE



KEYING, CODING & LATCH POSITION  
(4CCT EXAMPLE SHOWN)  
VIEW INMATING DIRECTION

NOTES:  
\* SEE SHEET 1 NOTE 4

SEE SHEET 1 EC NO: IFC2076-1580 DR: DRWINZGRAMER CHKD: APPR: BRUTTLE DATE: 2016/05/24 DATE: 2016/08/30	QUALITY SYMBOLS	GENERAL TOLERANCES (UNLESS SPECIFIED)	DIMENSION STYLE	SCALE	DESIGN UNITS	THIRD ANGLE PROJECTION
	▽=0	m   INCH	MM ONLY	1:1	METRIC	
	▽=0	4 PLACES ± --- ± ---	DRAWN BY DATE	TITLE		
		3 PLACES ± --- ± ---	B. RUTLE 2006/10/04	RAST 5 VERT HDR PA 66 HOUSING HALOGEN FREE		
	2 PLACES ± 0.1 ± ---	CHECKED BY DATE	MOLEX INCORPORATED			
	1 PLACE ± 0.2 ± ---	T. TOURSH 2006/10/04	DOCUMENT NO.			
	ANGULAR ± 2 °	APPROVED BY DATE	SD-93319-001			
	DRAFT WHERE APPLICABLE MUST REMAIN WITHIN DIMENSIONS	BMAGUIRE 2011/02/07	SHEET NO. 2 OF 2			
	SEE CHART	MATERIAL NO.	THIS DRAWING CONTAINS INFORMATION THAT IS PROPRIETARY TO MOLEX INCORPORATED AND SHOULD NOT BE USED WITHOUT WRITTEN PERMISSION			