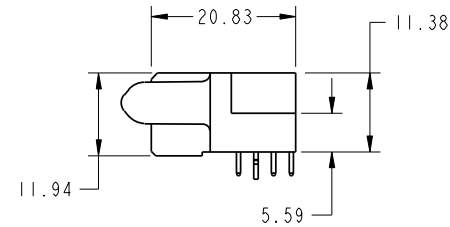
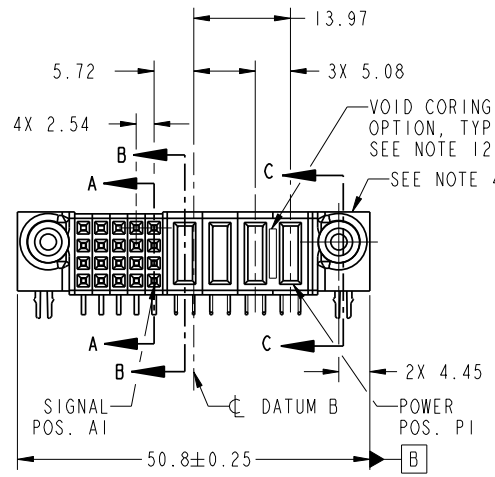


Tous droits strictement réservés. Reproduction ou communication a des tiers interdite sous quelque forme que ce soit sans autorisation écrite du propriétaire. Propriété de c FCI. Droits de reproduction FCI.



All rights strictly reserved. Reproduction or issue to third parties in any form whatever is not permitted without written authority from the proprietor. Property of FCI. Copyright FCI.

PRODUCT NO.	ROWS	SIGNAL				POWER								
		E2	5	4	3	2	1	P4	P3	P2	P1	E1		
51915-153-- NOTE 3	D C B A		H	H	H	H	H	H	H	PA	PA	PA	PA	
			G	G	G	G	G	G	G					
			F	F	F	F	F	F	F					
			E	E	E	E	E	E	E					



CODE	DIM "M" MATING LENGTH	CONTACT TYPE
PA	[1.07]	POWER
H	[N/A]	SIGNAL
G	[N/A]	SIGNAL
F	[N/A]	SIGNAL
E	[N/A]	SIGNAL
HA	[N/A]	HOLD-DOWN

mat'l code SEE NOTE 2				tolerances unless otherwise specified		CUSTOMER		FCI	
ltr	ecn no.	dr	date	linear	0.X ± 0.5	COPY		www.fciconnect.com	
A	DG08-0052	JC	04/02/08	linear	0.XX ± 0.25	projection	title 4P + 20S R/A SOLDER RECEPTACLE		
				angles	0.XXX ± 0.1				
				dr	0 ± 2	MM	product family	PwrBlade	code
				engr		1:1	size	dwg no	213
				chr			A	51915-153	sheet
				appd					1 of 4
sheet index	revision sheet	A	A	A	A				
		1	2	3	4				

Pro/E

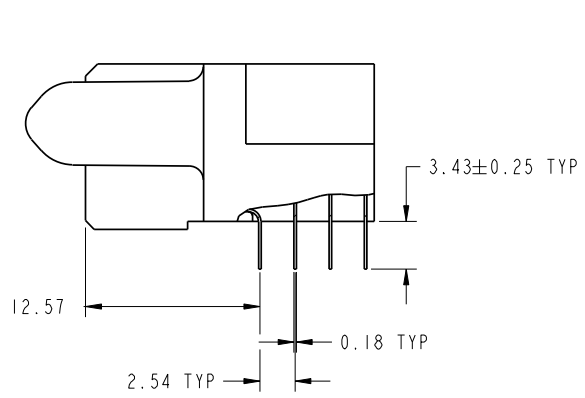
cage code 22526

Tous droits strictement réservés. Reproduction ou communication o des liens interdite sous quelque forme que ce soit sans autorisation écrite du propriétaire. Propriete de c FCI. Droits de reproduction FCI.

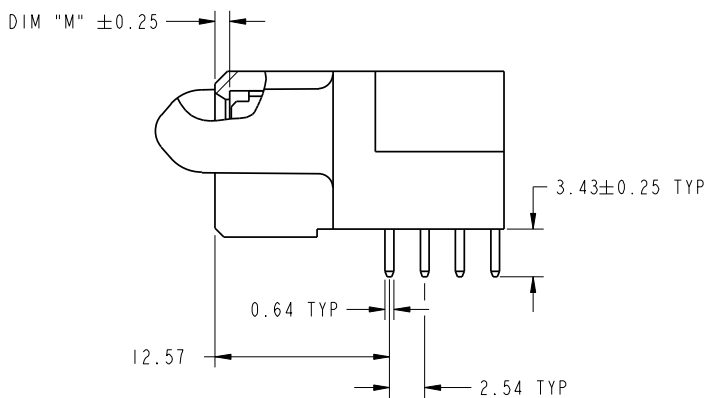
All rights strictly reserved. Reproduction or issue to third parties in any form whatever is not permitted without written authority from the proprietor. Property of FCI. Copyright FCI.



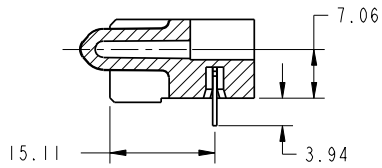
PRODUCT NUMBER  
51915-153..  
NOTE 3



BROKEN-OUT SECTION A-A  
SCALE 2:1



BROKEN-OUT SECTION B-B  
SCALE 2:1



SECTION C-C

sheet index		revision sheet		Pro/E		3		cage code 22526		4	
mail code SEE NOTE 2				tolerances unless otherwise specified		CUSTOMER		www.fciconnect.com			
ltr	ecr no.	dr	date	linear	0.X ± 0.5	COPY		title			
A				projection	0.XX ± 0.25			4P + 20S			
				angles	0.XXX ± 0.1			R/A SOLDER RECEPTACLE			
				dr	0° ± 2°	MM		product family		PwrBlade	code
				engr	Jerome Chen 02/19/08	scale		size		dwg no	213
				chr	Gary Hsieh 02/19/08	1:1		A		51915-153	sheet
				appd	Joseph Hsia 02/19/08						2 of 4

PDM: Rev:A

STATUS: Released

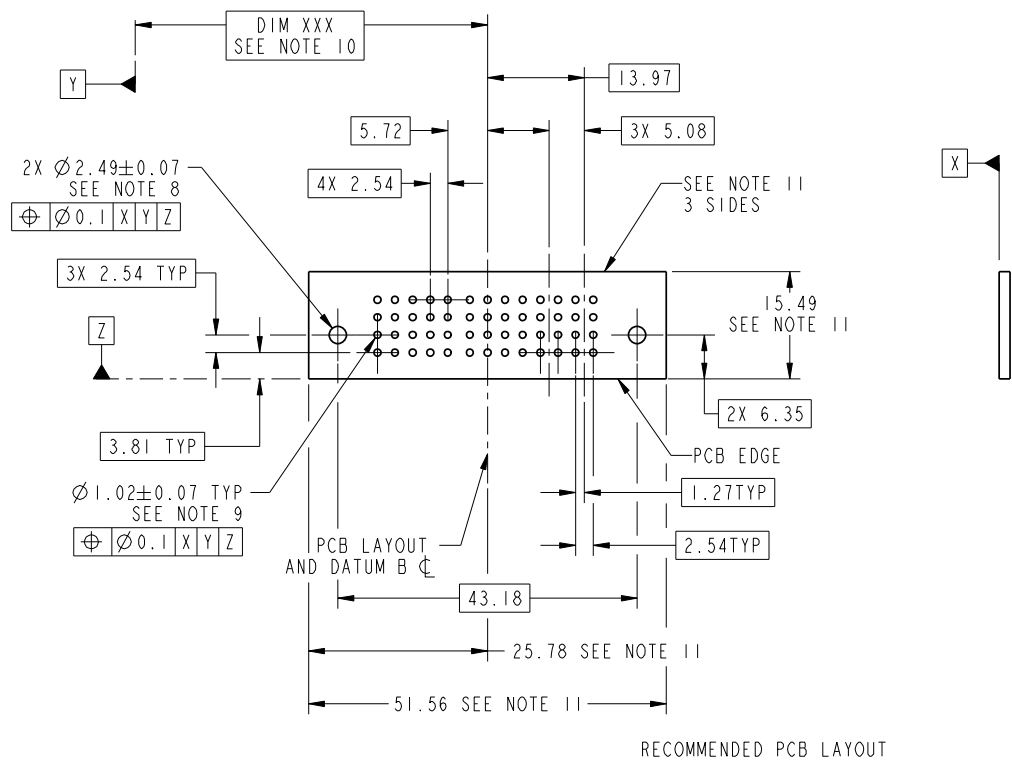
Printed: Dec 20, 2010

Tous droits strictement réservés. Reproduction ou communication o des liens interdite sous quelque forme que ce soit sans autorisation écrite du propriétaire. Propriete de c FCI. Droits de reproduction FCI.



All rights strictly reserved. Reproduction or issue to third parties in any form whatever is not permitted without written authority from the proprietor. Property of FCI. Copyright FCI.

PRODUCT NUMBER  
51915-153...  
NOTE 3



RECOMMENDED PCB LAYOUT

mat'l code		SEE NOTE		tolerances unless otherwise specified		CUSTOMER		FCI		www.fciconnect.com	
lfr	ecn no.	dr	date	linear	0.X ± 0.5	COPY		projection		title	
A					0.XX ± 0.25	MM		4P + 20S		R/A SOLDER RECEPTACLE	
				angles	0.XXX ± 0.1	1:1		product family		PwrBlade	
				dr	0° ± 2°			size		code	
				engr	Jerome Chen 02/19/08			51915-153		213	
				chr	Jerome Chen 02/19/08			A		sheet	
				appd	Gary Hsieh 02/19/08					3 of 4	
					Joseph Hsia 02/19/08						
sheet index	revision sheet										



MM

A

cage code 22526

Pro/E

PDM: Rev:A

STATUS: Released

Printed: Dec 20, 2010

Tous droits strictement réservés. Reproduction ou communication o des liens interdite sous quelque forme que ce soit sans autorisation écrite du propriétaire. Propriete de c FCI. Droits de reproduction FCI.



All rights strictly reserved. Reproduction or issue to third parties in any form whatever is not permitted without written authority from the proprietor. Property of FCI. Copyright FCI.

PRODUCT NUMBER  
51915-153\_\_  
NOTE 3

NOTES:

1. DIMENSIONS AND TOLERANCES ARE IN ACCORDANCE WITH ASME Y14.5M, 1994 UNLESS OTHERWISE SPECIFIED.
- CONNECTOR NOTES:
2. HOUSING MATERIAL: UL 94 V-0 GLASS FILLED HIGH-TEMP THERMOPLASTIC  
POWER CONTACT MATERIAL: COPPER ALLOY  
SIGNAL PIN MATERIAL: COPPER ALLOY
3. PLATING:  
51915-153, 51915-153LF PLATING SPEC. WAS SHOWN IN THE PRINT OF 10064183.
4. MANUFACTURER'S NAME, P/N, AND DATE CODE TO APPEAR ON THIS SURFACE.
5. PRODUCT SPECIFICATION GS-12-149.  
APPLICATION SPECIFICATION BUS-20-067.
6. PACKAGED IN TRAYS.
- PCB NOTES:
7. ALL HOLE DIAMETERS ARE FINISHED HOLE SIZE.
8. MOUNTING HOLES, WHERE APPLICABLE, ARE UNPLATED.
9.  $\varnothing 1.151 \pm 0.025$  DRILLED HOLES PLATED WITH  
0.008 MIN SnPb OR Sn OVER 0.03  
TO 0.08 Cu PLATING TO ACHIEVE  
 $\varnothing 1.02 \pm 0.07$  HOLE.
10. "DIM XXX" TO BE DETERMINED BY THE CUSTOMER.
11. CONNECTOR KEEP-OUT ZONE.
12. THE VOID CORING IN BETWEEN POWER MODULES, SIGNAL MODULES AND END MODULES ARE OPTIONAL AND THE SHAPE MAY BE DIFFERENT FOR OPTIMIZE THE MOLDING PROCESS. THE VOID CORING WILL NO EFFECT TO PRODUCT FUNCTION.

mat'l code				SEE NOTE 2		tolerances unless otherwise specified		CUSTOMER		FCI		www.fciconnect.com	
lfr	ecn no.	dr	date	linear	0.X ± 0.5	COPY		projection	title				
A					0.XX ± 0.25				4P + 20S				
				angles	0.XXX ± 0.1				R/A SOLDER RECEPTACLE				
				dr	0° ± 2°				product family	PwrBlade	code		
				engr	Jerome Chen 02/19/08			scale	size	dwg no	213	sheet	4 of 4
				chr	Gary Hsieh 02/19/08			1:1	A	51915-153			
				appd	Joseph Hsia 02/19/08								
sheet index	revision sheet												

Pro/E

cage code 22526

PDM: Rev:A

STATUS: Released

Printed: Dec 20, 2010