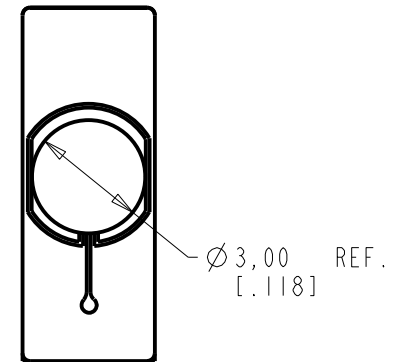
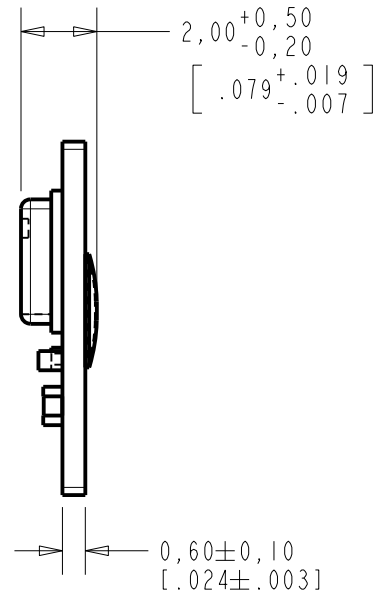
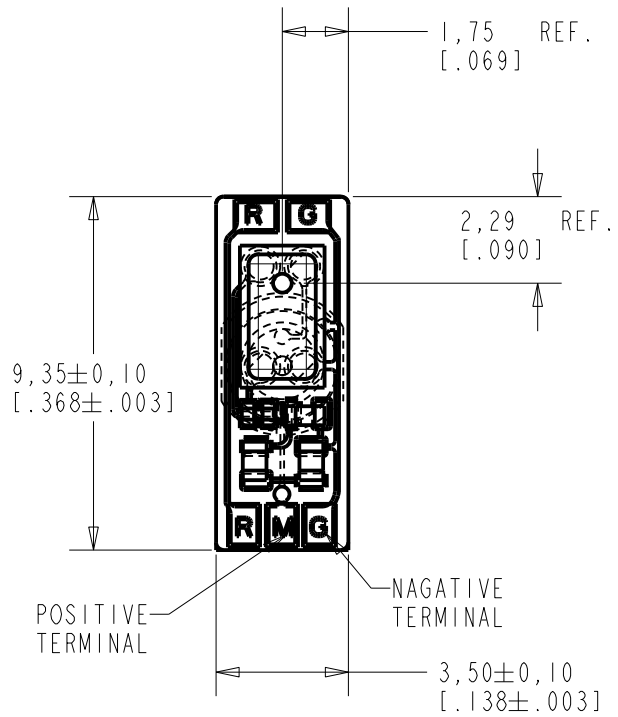


TC-32348-000
SHT 1.1

NOTES:

- TC-133 PASTE ON TC-132 AROUND THE ADHESIVE TAPE USE LOCTITE 460.



DIMENSIONS IN MILLIMETERS [INCHES]

KNOWLES ELECTRONICS
ITASCA, ILLINOIS U.S.A.

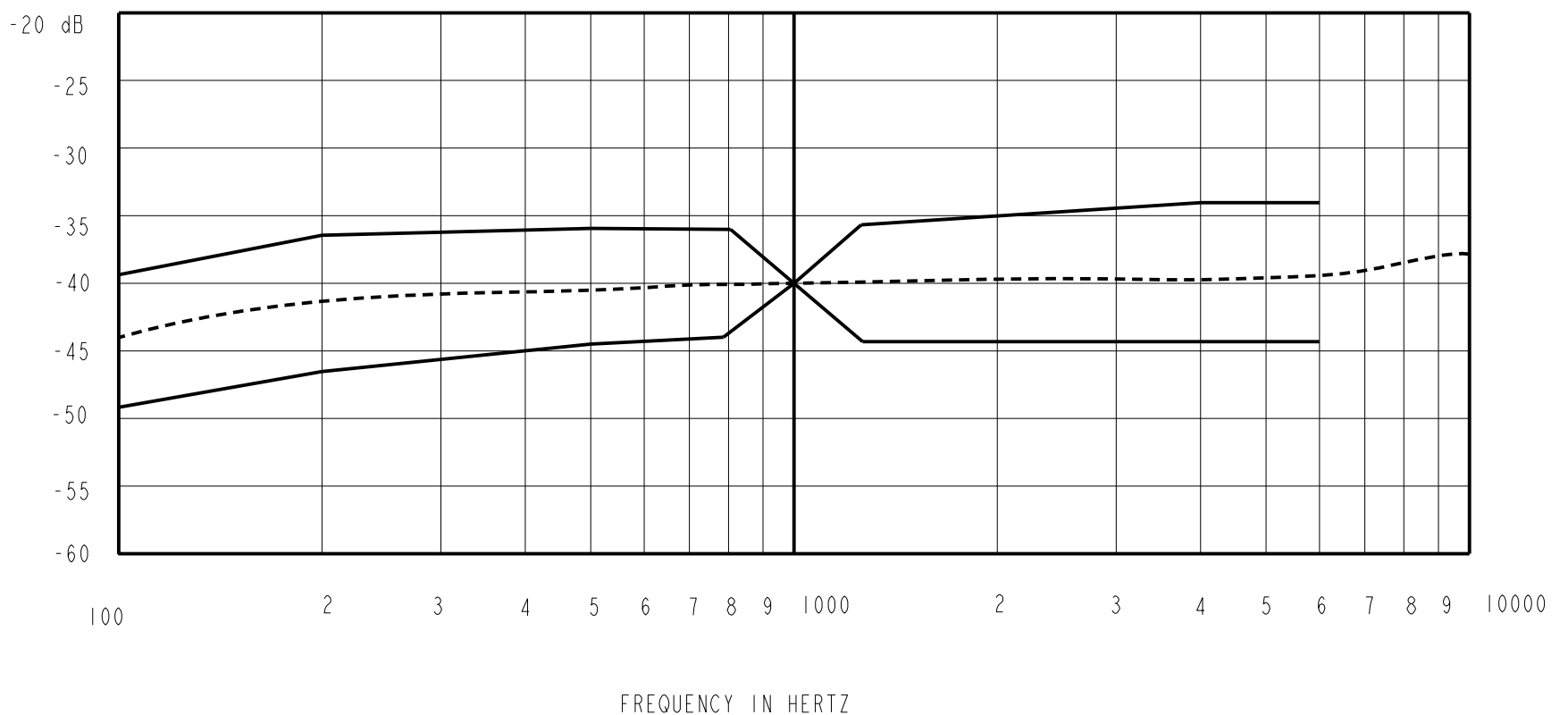
Revision	C.O. #	Implementation Date	RELEASE LEVEL	REVISION
			Entering	1
SCALE: 5:1			DR. BY	DATE
DO NOT SCALE DRAWING			LSY	8-12-13
TITLE: PCBA WITH DOME			CK. BY	DATE
OUTLINE DRAWING			---	---
TC-32348-000			APP. BY	DATE
SHT 1.1			---	---

THE INFORMATION CONTAINED IN THIS LITERATURE IS BASED ON OUR EXPERIENCE TO DATE AND IS BELIEVED TO BE RELIABLE AND IT IS SUBJECT TO CHANGE WITHOUT NOTICE. IT IS INTENDED AS A GUIDE FOR USE BY PERSONS HAVING TECHNICAL SKILL AT THEIR OWN DISCRETION AND RISK. WE DO NOT GUARANTEE FAVORABLE RESULTS OR ASSUME ANY LIABILITY IN CONNECTION WITH ITS USE. DIMENSIONS CONTAINED HEREIN ARE FOR REFERENCE PURPOSES ONLY. FOR SPECIFIC DIMENSIONAL REQUIREMENTS CONSULT MANUFACTURER. THIS PUBLICATION IS NOT TO BE TAKEN AS A LICENSE TO OPERATE UNDER, OR RECOMMENDATION TO INFRINGE ANY EXISTING PATENTS. THIS SUPERSEDES AND VOIDS ALL PREVIOUS LITERATURE.

TC-32348-000

SHEET 2.1

SENSITIVITY IN dB RELATIVE TO 1.0V VOLT/0.1 Pa (N/M²)
FOR CONTITIONS SHOWN BELOW



SENSITIVITY

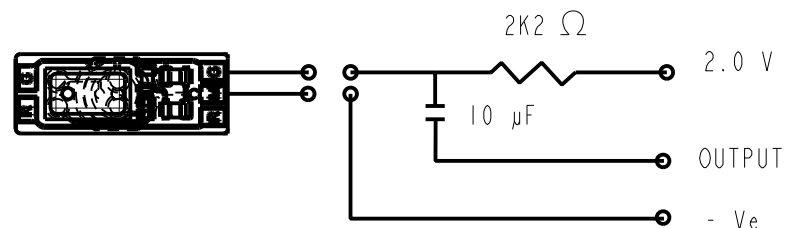
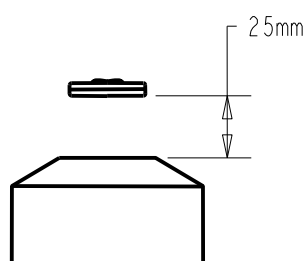
FREQ	MIN	NOR	MAX
100	---	-44.5	---
200	---	-41.5	---
800	---	-39	---
1000	-43	-40	-37
1500	---	-39.5	---
5000	---	-38.5	---
6000	---	-39.5	---

RANGE OF DEVIATION FROM 1 KHz

FREQ	DOWN	UP
100	-9.5	0.5
200	-6.5	3.5
800	-4	4
1000	-3	3
1500	-4.5	4.5
4000	-5	6.5
6000	-5	6.5

SENSITIVITY OF FINISHED GOODS. -40 dB RE 1.0V/Pa AT 1KHz

TEST CONTITION:
 INLINE MIC EXPOSED TO 94dB SPL SWEPT.
 SOUND FIELD AT 25mm FROM VOICE APERTURE.
 ARTIFICIAL VOICE: B&K 4227 MOUNTH SIMULATOR
 SOURCE VOLTAGE: 2.0V
 RESISTANCE: 2.2K ohm
 CURRENT DRAIN: 0.5 mA MAX.



LEAD IDENTIFICATION
& TEST CIRCUIT

Revision	C.O. #	Implementation Date	RELEASE LEVEL	REVISION
			Entering	1

WHEN TEST LIMITS ARE USED TO ESTABLISH INCOMING INSPECTION ACCEPTANCE/REJECTION CRITERIA, CORRELATION OF TEST EQUIPMENT WITH KNOWLES IS ALSO REQUIRED FOR ELIMINATION OF EQUIPMENT AND TEST METHOD VARIATION TITLE: PCBA WITH DOME PERFORMANCE SPECIFICATION	DR. BY	DATE
	LSY	8-12-13
	CK. BY	DATE
	---	---
	APP. BY	DATE
	---	---

TITLE: PCBA WITH DOME	TC-32348-000
PERFORMANCE SPECIFICATION	SHT 2.1

KNOWLES ELECTRONICS
 ITASCA, ILLINOIS U.S.A.

TC-32348-000		KNOWLES ELECTRONICS		TC-32348-000	
Sheet 4.1		ITASCA, ILLINOIS U.S.A.		Sheet 4.1	
Dr.	By LSY	Date 8-12-13	Subject:	Revision:	
Ch.	---	---	PCBA WITH DOME BOX OF 100	1	Release Level
App.	---	---			Entering
COL.	1	2	3	4	
Part or Dwg. no.		Tot. Req.	Nomenclature:	Applicable Specs or Remarks	Item No. Line No.
TC-159		100	PCBA WITH DOME, BOX OF 100		1 1

REVISION		TC-32348-000 Sheet 4.1
	<small>PROPRIETARY NOTE: THIS DOCUMENT CONTAINS INFORMATION WHICH IS THE PROPRIETARY PROPERTY OF KNOWLES ELECTRONICS, LLC. OR ITS AFFILIATED ENTITIES. IT IS ISSUED IN STRICT CONFIDENCE AND SHALL NOT BE REPRODUCED, COPIED, USED, OR DISCLOSED TO ANY THIRD PARTY PARTIALLY OR WHOLLY IN ANY MANNER WITHOUT PRIOR WRITTEN PERMISSION OF, AND MUST BE RETURNED UPON REQUEST BY, KNOWLES ELECTRONICS, LLC.</small>	

REV: BDC/PM REV: C