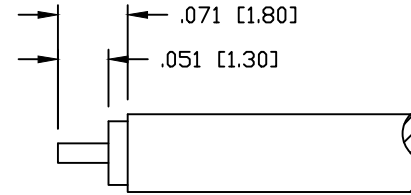
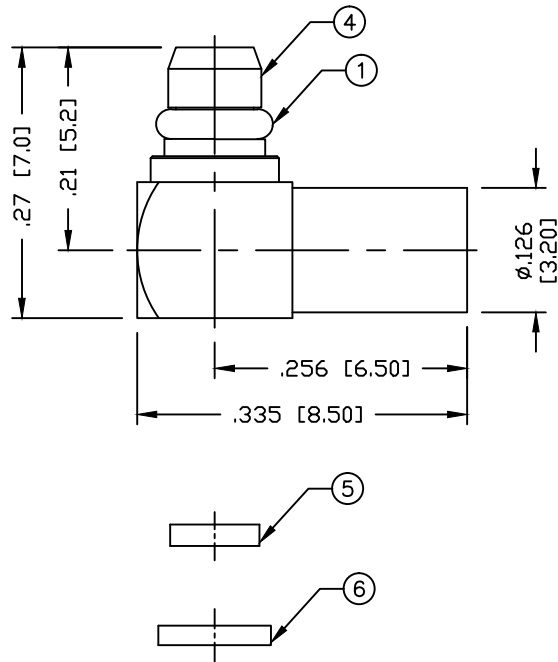


PART NO.		<b>RMX-9010-1SR1</b>		
REV	DESCRIPTION	DWN	DATE	APPROVED
-	ENGINEERING RELEASE	CZS	08/11/16	JDMc



RECOMMENDED STRIPPING DIMENSIONS  
PIN TO BE SOLDER

**SPECIFICATIONS:**

IMPEDANCE: 50 Ohms  
 FREQUENCY RANGE: 0-6 GHz  
 WORKING VOLTAGE: 170 V rms @ sea level  
 TEMPERATURE RANGE: -65°C TO 165°C  
 INSULATION RESISTANCE: 1k M Ohms min.  
 FOR .085 SEMI RIGID, RG-405/U & BELDEN 1671A CABLE

#	DESCRIPTION	QTY	MATERIAL	FINISH
6	PRESS CAP	1	BRASS	GOLD, 3μ <sup>m</sup>
5	INSULATOR	1	PTFE	---
4	RETAINING RING	1	Be.Cu.	GOLD, 3μ <sup>m</sup>
3	PIN	1	BRASS	GOLD, 30μ <sup>m</sup>
2	INSULATOR	1	PTFE	---
1	BODY	1	BRASS	GOLD, 3μ <sup>m</sup>

CUSTOMER OUTLINE DRAWING	
ALL DIMENSIONS ARE REFERENCE ONLY	
UNLESS OTHERWISE SPECIFIED: DIMENSIONS ARE IN INCHES AND [MILLIMETERS]	
DRAWN C. ZUNIGA	8/11/16
CHECKED	
ORJ DRAWN C. ZUNIGA	08/11/16

**RoHS COMPLIANT**

PROPRIETARY AND CONFIDENTIAL  
 THIS DRAWING CONTAINS INFORMATION PROPRIETARY TO RF INDUSTRIES. ANY UNAUTHORIZED USE OF THIS DRAWING IS EXPRESSLY PROHIBITED WITHOUT WRITTEN PERMISSION FROM RF INDUSTRIES. ANY VIOLATION IS PUNISHABLE UNDER U.S. COPYRIGHT LAWS.

**RFconnectors**  
 DIVISION OF RF INDUSTRIES, LTD. 7610 MIRAMAR RD. SAN DIEGO, CA 92126 (858) 549-6340 (858) 549-6345 FAX

<b>MMCX PLUG</b>			
RIGHT ANGLE FOR SEMI RIGID CABLE			
SIZE A	CABLE GROUP SR1	DWG NO. <b>RMX-9010-1SR1</b>	REV ---
SCALE: NTS	ENGINEERING ID: 000000	SHEET 1 OF 1	