

NOTES:

1. MATERIAL:

- A) BACKSHELL COPPER ALLOY 172 PER QQ-A-533
- B) BACKSHELL SCREW STAINLESS STEEL PER QQ-S-763, 300 SERIES
- C) CLAMP BAR STAINLESS STEEL PER QQ-S-763, 300 SERIES
- D) INSERT ALUMINUM ALLOY PER QQ-A-356
- E) CLAMP SCREW STAINLESS STEEL PER QQ-S-763, 300 SERIES
- F) BRAID COPPER ALLOY

2. FINISH:

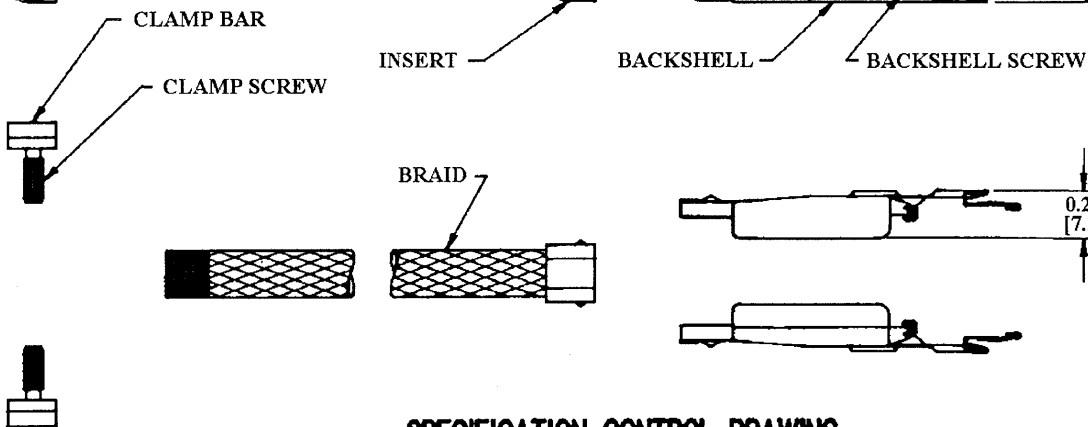
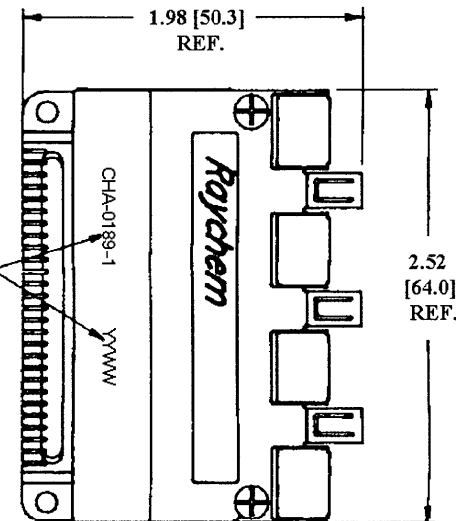
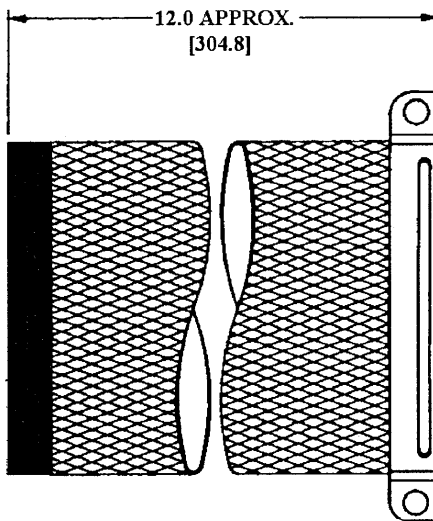
- A) BACKSHELL CADMIUM PLATED PER QQ-P-416
- B) BACKSHELL SCREW CADMIUM PLATED PER QQ-P-416
- C) CLAMP BAR CADMIUM PLATED PER QQ-P-416
- D) INSERT TIN PLATED PER MIL-T-10727
- E) CLAMP SCREW CADMIUM PLATED PER QQ-P-416
- F) BRAID TIN PLATED

3. RAYCHEM PART NUMBER CHA-0189 -1 AND DATE CODE ARE STAMPED APPROXIMATELY AS SHOWN.

4. WHEN A BUS IS REQUIRED FOR TERMINATING SHIELDS, REFER TO RAYCHEM SPECIFICATION CONTROL DRAWING CTA-0158 FOR BUS DETAILS.

REVISION			DATE	APPROVED
1	DESCRIPTION			
N/C	INITIAL RELEASE PER DCR# T28038		9/19/2000	M.HIGGY

0.285 MAX.
[7.24]



SPECIFICATION CONTROL DRAWING

UNLESS OTHERWISE SPECIFIED DIMENSIONS ARE IN INCHES. METRIC DIMENSIONS ARE IN BRACKETS. DECIMALS .XXX ± .005 1.13 mm .XX ± .02 1.3 mm ANGLES .X ±	DRAWN ZS.ORBAN 9/8/2000	Raychem RAYCHEM CORPORATION 300 OCEANVIEW DRIVE SHERLO PARK, CALIFORNIA 94628	
	CHECKED		TITLE BACKSHELL, PLUG, 2", EME, CADMIUM PLATED (FOR ROUND WIRE PLANAR-ARRAYED CABLES) MTC SERIES SPECIAL
	APPROVED		DATE CODE 06090 DWG. NO. CHA-0189-1 REV N/C
	APPROVED M.HIGGY 9/19/2000		DO NOT SCALE THIS DRAWING SHEET 1 OF 1
CAD NAME T28038.TIF	THIRD ANGLE PROJECTION		
WEIGHT 63.4 GRAMS MAX.			

If this document is printed it becomes uncontrolled. Check with the web for latest revision.