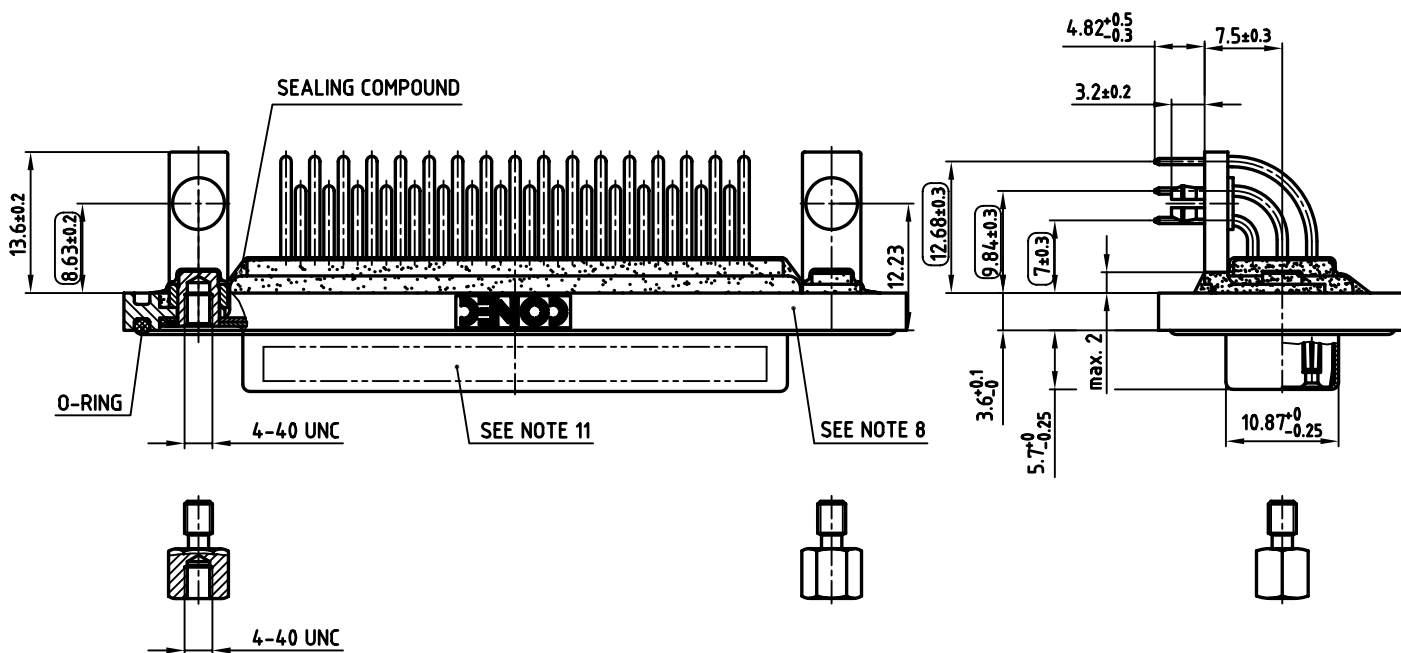
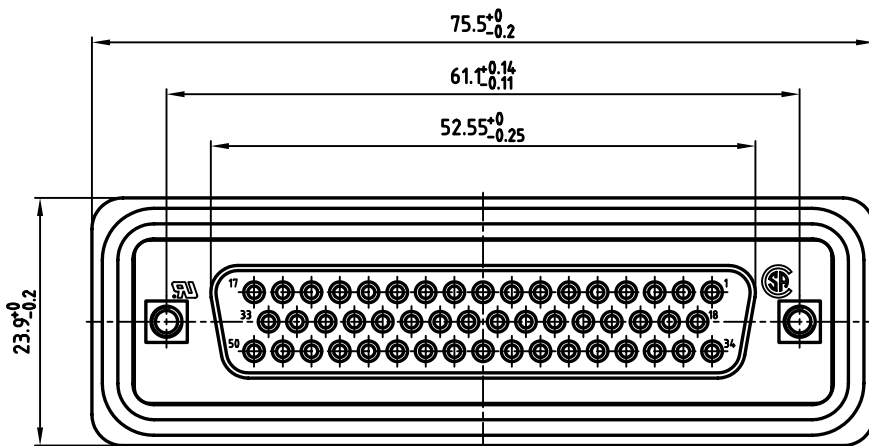


used for: D-SUB



NOTES:

1. METALSHELLS: COPPER ALLOY; min. 320µ" TIN
2. INSULATORS: PBT GF UL 94 V-0, BLACK
3. CONTACTS: COPPER ALLOY
PLATING: 8µ" HARD GOLD OVER min. 50µ" NICKEL
4. METAL BRACKET: STEEL; min. 320µ" TIN over 80µ" NICKEL
5. THREADED INSERT: COPPER ALLOY; min. 200µ" TIN over 80µ" NICKEL
6. PCB-SNAP: COPPER ALLOY; min. 200µ" TIN over 80µ" NICKEL
PCB-HOLE: $\varnothing 3.1 \pm 0.1$; PCB THICKNESS 1.6mm
7. HEXLOCKING SCREW: STAINLESS STEEL
8. FRAME: ZINC DIECAST; NICKEL PLATED
9. P.C.B. HOLE DRILLINGS ON SHEET 2
10. MAXIMUM TORQUE VALUE FOR THREAD: 6" LBS
11. CONNECTOR IS PART MARKED: 6STD50SAU99R40X CONEC ABC
12. = CHECK DIMENSION

Directive 2002/95/EC
RoHS
Compliant

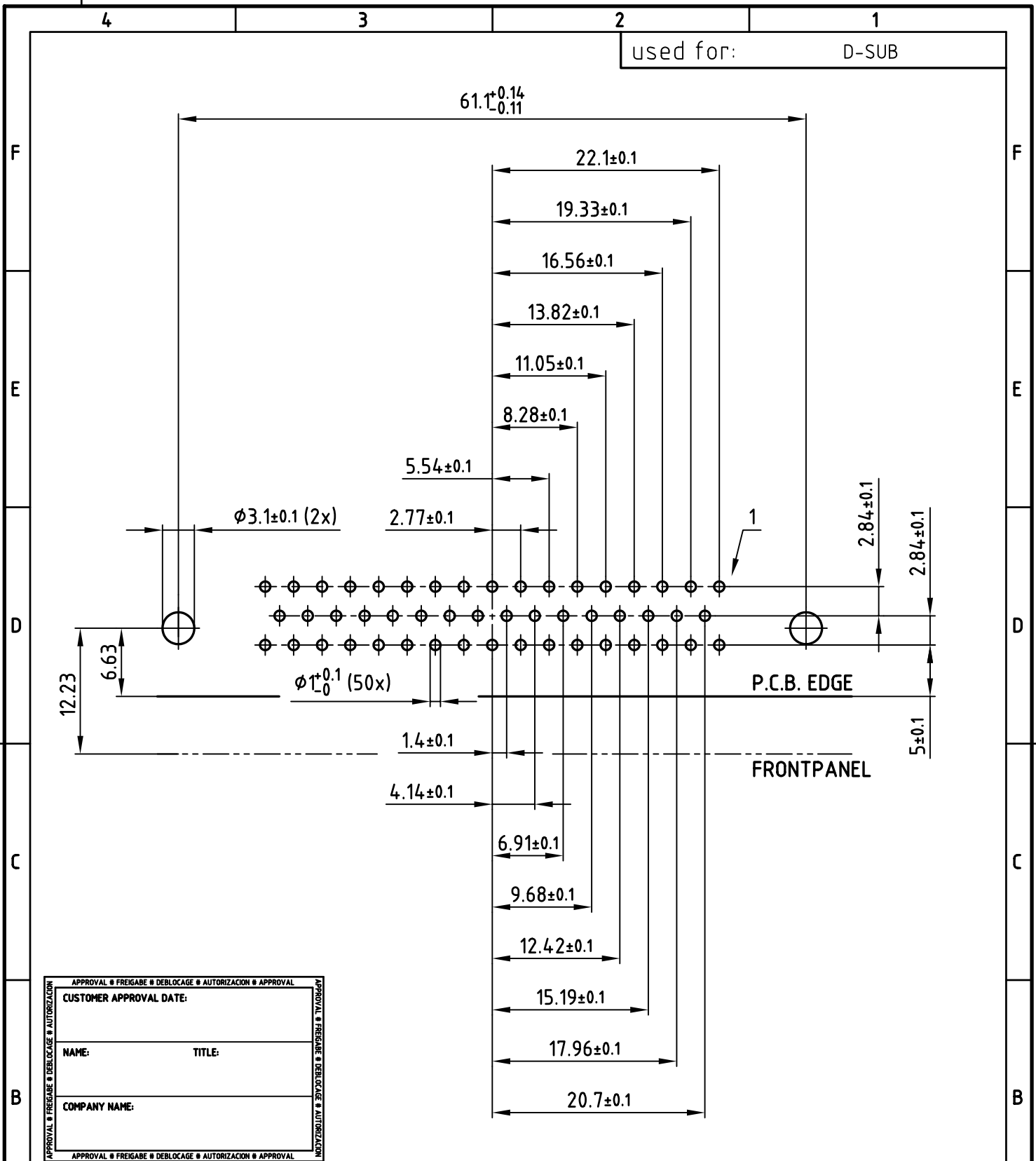
APPROVAL # FREIGABE # DEBLOCAGE # AUTORIZACION # APPROVAL	
CUSTOMER APPROVAL DATE:	
NAME:	TITLE:
COMPANY NAME:	
APPROVAL # FREIGABE # DEBLOCAGE # AUTORIZACION # APPROVAL	

THIS DRAWING MAY NOT BE COPIED OR REPRODUCED IN ANY WAY, AND MAY NOT BE PASSED ON TO A THIRD PARTY, WITHOUT WRITTEN PERMISSION. OWNERSHIP AND COPYRIGHT OF CONEC GmbH DO NOT ALTER CAD DRAWING BY HAND

rev.	description	date	name

tolerance		dim. in mm
2005	date	
drawn	12.04.	name
appd.	12.04.	Kühle
norm	DIN 41652	
d-old		
CONEC		

scale:	2:1	
material:	SEE NOTES	
title:	D-SUB FEMALE 90° 50pos. SOLDER PIN ANGLED with threaded insert, metal bracket and clip	
dwg no:	AutoCAD 2004	DIN-A
	18K1A345	3
		sh:1/2
part no:	6STD50SAU99R40X	



APPROVAL # FREIGABE # DEBLOCAGE # AUTORIZACION # APPROVAL	
CUSTOMER APPROVAL DATE:	
NAME:	TITLE:
COMPANY NAME:	
APPROVAL # FREIGABE # DEBLOCAGE # AUTORIZACION # APPROVAL	

THIS DRAWING MAY NOT BE COPIED OR REPRODUCED IN ANY WAY, AND MAY NOT BE PASSED ON TO A THIRD PARTY WITHOUT WRITTEN PERMISSION.
 OWNERSHIP AND COPYRIGHT OF CONEC GmbH
 DO NOT ALTER CAD DRAWING BY HAND

tolerance		dim. in mm	
2005	date	name	
drawn	12.04.	Schmidt	
appd.	12.04.	Kühle	
norm	DIN 41652		
d-old			
rev.	description	date	name



scale:	2:1
material:	SEE SHEET 1
title:	P.C.B. HOLE DRILLINGS D-SUB FEMALE 90°, 50pos., SOLDER PIN ANGLED with threaded insert, metal bracket and clip
dwg no:	AutoCAD 2004
part no:	SEE SHEET 1

DIN-A
4
sh:2/2