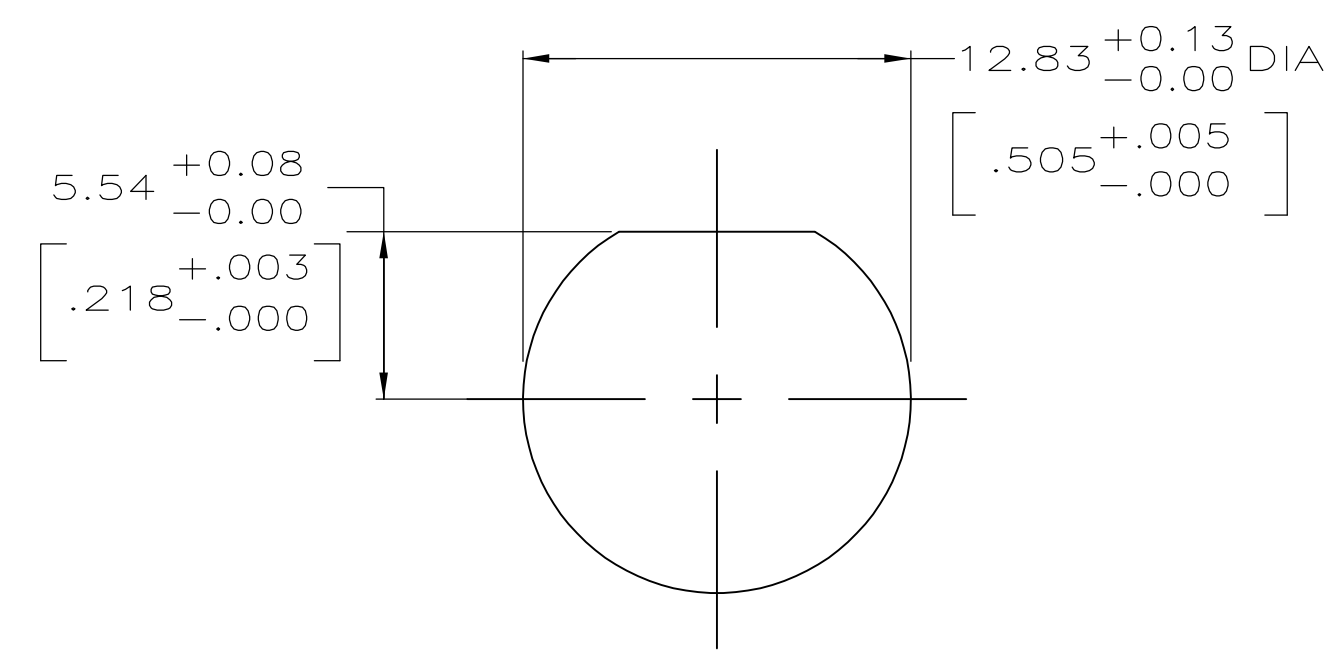
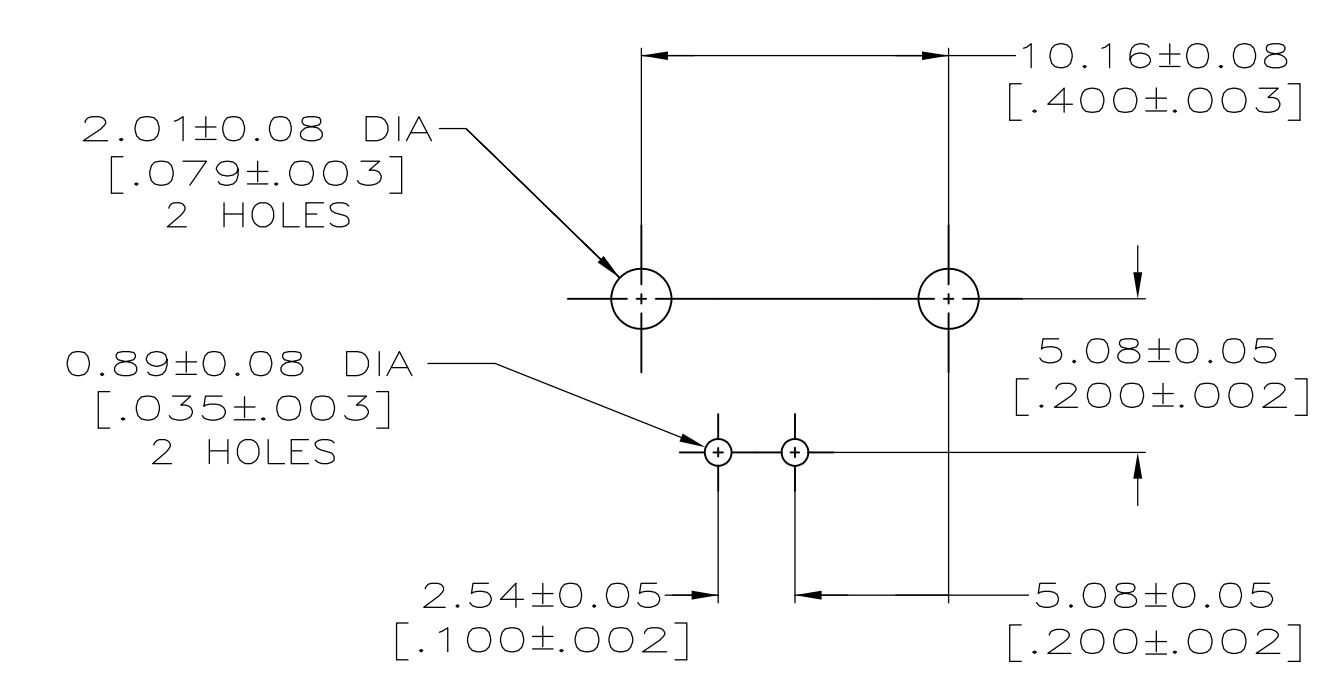


- 1 ZINC PER QQ-Z-363.
- 2 POLYMETHYLPENTENE PER ASTM-D-1238.
- 3 PHOSPHOR BRONZE PER QQ-B-750.
- 4 BRASS PER ASTM-B-453.
- 5 BRASS PER ASTM-B-16.
- 6 NICKEL PLATE PER QQ-N-290, 3.81 μm [.000150] MINIMUM THICK.
- 7 TIN PLATE PER ASTM-B-545, 3.81 μm [.000150] MINIMUM THICK.
- 8 GOLD PLATE PER MIL-G-45204, 1.27 μm [.000050] MINIMUM THICK.
- 9 GOLD PLATE PER MIL-G-45204, 0.76 μm [.000030] MINIMUM THICK.
- 10. SEE INSTRUCTION SHEET 408-2769.



RECOMMENDED PANEL CUTOUT



PCB CONFIGURATION

| | |
|----------------|-------------|
| | 5413879-2 |
| | 5413879-1 |
| CONTACT FINISH | PART NUMBER |

| | | | | | |
|--|--|---------------------------------|--|------------------------|--|
| THIS DRAWING IS A CONTROLLED DOCUMENT. | | DIN A FERNANDEZ-DOCK5 22APR2005 | | 5413879-2 | |
| DIMENSIONS: mm [INCHES] | | C/K J. HAVENER 22APR2005 | | 5413879-1 | |
| TOLERANCES UNLESS OTHERWISE SPECIFIED: | | APVD J. LIPPERT 22APR2005 | | NAME | |
| 0 PLC ± - | | PRODUCT SPEC | | JACK, RIGHT ANGLE, PCB | |
| 1 PLC ± - | | APPLICATION SPEC | | 50 OHM, SERIES BNC | |
| 2 PLC ± 0.20 [.008] | | SIZE | | CAGE CODE | |
| 3 PLC ± - | | DRAWING NO | | RESTRICTED TO | |
| 4 PLC ± - | | A1 00779 | | 5413879 | |
| ANGLES ± - | | WEIGHT | | SCALE | |
| MATERIAL SEE NOTES 1-5 | | FINISH SEE NOTES 6-9 | | CUSTOMER DRAWING | |
| | | 4:1 | | SHEET 1 OF 1 | |
| | | | | REV A1 | |