

4

3

2

1

THIS DRAWING IS UNPUBLISHED. RELEASED FOR PUBLICATION  
© COPYRIGHT ALL RIGHTS RESERVED.

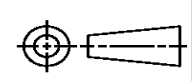
LOC	DIST	REVISIONS			
P	LTR	DESCRIPTION	DATE	DWN	APVD
	B1	ECR-14-002334	18FEB2014	GK	HMR

# REPLACED BY OCEAN STYLE APPLICATOR PART NUMBER 2151022-1

FOR REPLACEMENT PARTS FOR APPLICATOR 1855467  
REFER TO ADDITIONAL PAGE(S). SPARE PARTS KIT (IF LISTED)  
WILL REMAIN AVAILABLE.

THE REPLACEMENT OCEAN STYLE APPLICATOR HAS THE  
SAME TERMINATOR/PRESS INTERFACE AS APPLICATOR  
1855467

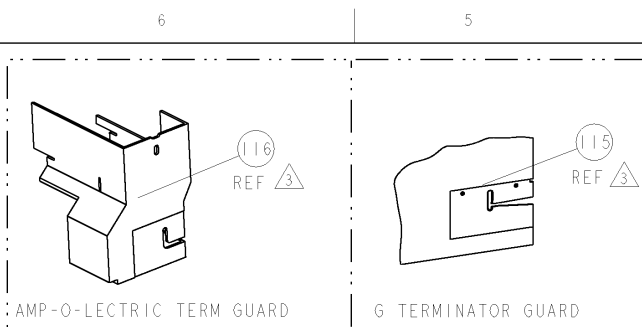
THIS DRAWING IS A CONTROLLED DOCUMENT.		DWN	GOPALAKRISHNA HV														
DIMENSIONS:		CHK	RAGHAVENDRA														
TOLERANCES UNLESS OTHERWISE SPECIFIED:		APVD	RAGHAVENDRA														
<table border="0"> <tr><td>0 PLC</td><td>±</td></tr> <tr><td>1 PLC</td><td>±</td></tr> <tr><td>2 PLC</td><td>±</td></tr> <tr><td>3 PLC</td><td>±</td></tr> <tr><td>4 PLC</td><td>±</td></tr> <tr><td>ANGLES</td><td>±</td></tr> </table>		0 PLC	±	1 PLC	±	2 PLC	±	3 PLC	±	4 PLC	±	ANGLES	±	PRODUCT SPEC	NAME		
0 PLC	±																
1 PLC	±																
2 PLC	±																
3 PLC	±																
4 PLC	±																
ANGLES	±																
MATERIAL		APPLICATION SPEC	FINE ADJUST SIDE FEED HDM APPLICATOR														
FINISH		WEIGHT	SIZE	CAGE CODE	DRAWING NO												
			A3		©- 1855467												
		CUSTOMER DRAWING	SCALE	SHEET 1 OF 2	REV B1												



PART NUMBER	REV	FIRST USED	POWER UNIT	FEED TYPE	DESCRIPTION
1855467-1	A	122500-1	LEADMAKER	POST FEED	CUTS CARRIER
1855467-2	A	565435-5	BENCH MODEL K	PRE FEED	CUTS CARRIER
1855467-3	A	354500-1	BENCH MODEL G	PRE FEED	CUTS CARRIER
1855467-6	B	122500-1	LEADMAKER	POST FEED	CONTINUOUS CARRIER
7-1855467-7	A	-	-	-	SPARE PARTS

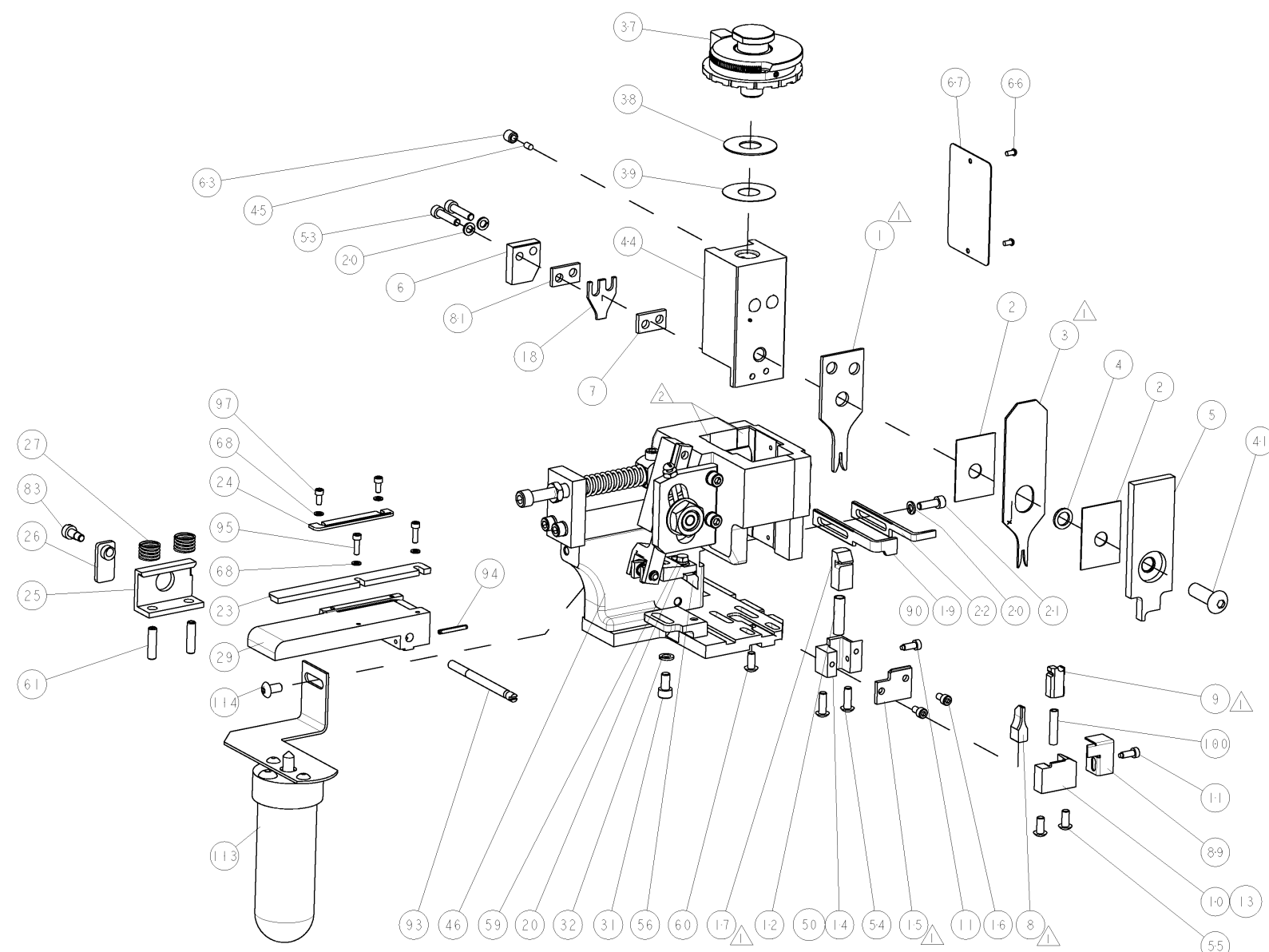
- △ RECOMMENDED SPARE PARTS
- △ GREASE LIGHTLY
- △ GUARD MUST BE IN PLACE WHEN OPERATING APPLICATOR IN A BENCH MACHINE

**\* WARNING**  
ON INSTALLATION, SET WIRE DISC TO LARGEST WIRE SIZE SETTING. USE OF SETTINGS BELOW MIN. REQUIRED CRIMP HEIGHT SETTING WILL CAUSE DAMAGE TO CRIMP TOOLING.

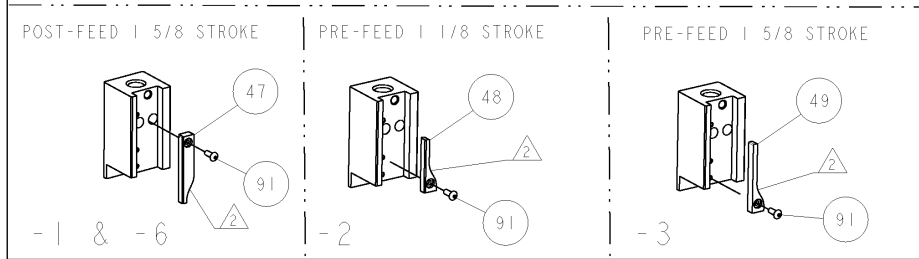


TERMINAL NAME: CONTACT, RECEPTACLE, MICRO MATE-N-LOCK			
TE PN	TE TERMINAL - TE CRIMP SPECS	CRIMP HEIGHT	WIRE SIZE
794606	-	.89mm+.05/- .05 [.035+.002/- .002]	20AWG
-	-	.79mm+.05/- .05 [.031+.002/- .002]	22AWG
-	-	.69mm+.05/- .05 [.027+.002/- .002]	24AWG
CRIMP	SIZE	TYPE	RANGE
-	WIRE 1.40mm [.055]	F	20-24 AWG
-	INSUL 1.78mm [.070]	F	∅.889 - 1.524
WIRE STRIP LENGTH	TERM APPL SPEC	FEED	APPLICATOR INSTRUCTIONS
2.90-3.53	114-13000	6.35	408-8040
			SET UP GAGE 458637-1

REVISONS		DATE	BY	APPV
A	RELEASED	04FEB2009	RK	GB
B	ECR-09-012984	08JAN2009	MY	GB



QTY	REF	DESCRIPTION	ITEM NO
1	116	GUARD WINDOW	116
1	115	INSERT, GUARD	115
2	2	SCR, BTN SKT HD CAP 10-32 X .375	114
1	1	LUBRICATOR ASSY	113
6	2	SPRING, COMPRESSION	100
1	2	SCR, SKT HD CAP 4-40 X .250	97
1	2	SCR, SKT HD CAP 4-40 X .375	95
1	1	PIN, SLOTTED SPRING .094 X .750	94
1	1	ADJUSTMENT SCREW	93
1	1	SCR, BTN SKT HD CAP 6-32 X .375	91
1	1	GUARD, FRONT CHIP	89
1	1	SCR, SHLD, SLOT HD, 3/16 DIA	83
1	1	SPACER	81
1	1	SF APPL INST 408-8040	72
1	1	GENERAL INSTRUCTION PKG	71
4	4	WASHER, SPRG LOCK, REG NO 4	68
1	1	PLATE, IDENTIFICATION	67
2	2	SCREW, DRIVE	66
1	1	SCR, SET, SELF LOCKING 1/4-20 X .250	63
2	2	SCR, SET, CUP POINT 10-32 X .750	61
1	1	SCR, BHSC, SELF-LOCKING, 8-32 X .375	60
1	1	SCREW, MACH, HEX HD, 8-32 X .312	59
1	1	FEED PAWL	56
2	2	SCR, BTN SKT HD CAP 8-32 X .375	55
2	2	SCR, BTN SKT HD CAP 8-32 X .500	54
2	2	SCR, SKT HD CAP 8-32 X .750	53
1	1	SHEAR HOLDER, REAR	50
1	1	CAM, PRE FEED, 1 5/8	49
1	1	CAM, PRE FEED, 1 1/8	48
1	1	CAM, POST-FEED 1 5/8	47
1	1	APPL, BASIC SUB ASSY (SIDE WISE MOCA)	46
1	1	PLUG, NYLON	45
1	1	RAM, SIDE FEED	44
1	1	SCR, BTN SKT HD CAP 5/16-24 X 1.00	41
1	1	SHIM SUB-ASSY	39
1	1	SHIM	38
1	1	FINE ADJUST HEAD ASSEMBLY	37
1	1	WASHER, SPRG LOCK, REG NO 10	32
1	1	SCR, SKT HD CAP 10-32 X .375	31
1	1	PLATE, REAR STRIP GUIDE	29
1	1	SPACER, CRIMPER	28
2	2	SPRING, COMPRESSION	27
1	1	LEVER, DRAG RELEASE	26
1	1	DRAG, TERMINAL	25
1	1	FRONT STRIP GUIDE	24
1	1	GUIDE, FRONT STRIP	23
1	1	STRIPPER	22
1	1	SCR, SKT HD CAP 8-32 X .500	21
4	4	WASHER, SPRG LOCK, REG NO 8	20
1	1	STRIPPER	19
1	1	HOLD DOWN, TERMINAL	18
1	1	FLOATING SHEAR, REAR	17
2	2	SCR, SKT HD CAP 6-32 X .250	16
1	1	PLATE, REAR SHEAR	15
1	1	SHEAR HOLDER, REAR	14
1	1	SHEAR HOLDER, FRONT (NO CUT)	13
1	1	SPRING, COMPRESSION	12
2	2	STOP, SHEAR	11
1	1	HOLDER, SHEAR, FRONT	10
1	1	FLOATING SHEAR, FRONT	9
1	1	ANVIL, COMBINATION	8
1	1	SPACER	7
1	1	DEPRESSOR SHEAR, REAR	6
1	1	DEPRESSOR, SHEAR	5
1	1	BLOCK, CRIMPER SPACER	4
1	1	CRIMPER, INSULATION PREMIUM	3
1	1	SPACER, CRIMPER	2
1	1	CRIMPER, WIRE PREMIUM	1



DIMENSIONS: INCHES		TOLERANCES UNLESS OTHERWISE SPECIFIED:	
0 PLC	± .01	1 PLC	± .01
2 PLC	± .01	3 PLC	± .01
4 PLC	± .001	5 PLC	± .001
6 PLC	± .0001	7 PLC	± .0001
MATERIAL:		FINISH:	
CUSTOMER DRAWING		SCALE: 3:5 SHEET 1 OF 1 REV B	