

	20	19	18	17	16	15	14	13	12	11	10	9	8	7	6	5	4	3	2	1
	PART NO.	CKT SIZE	DIM 'A'	DIM 'B'	DIM 'C'	DIM 'D' REF	DIM 'E'													
M	75730-0104	4	13.78/1.543	12.00/1.472																
	75730-0105	5	17.78/1.700	16.00/1.630																
	75730-0106	6	21.78/1.857	20.00/1.787																
	75730-0107	7	25.78/1.015	24.00/1.945																
L	75730-0108	8	29.78/1.172	28.00/1.102																
	75730-0109	9	33.78/1.330	32.00/1.260																
	75730-0110	10	37.78/1.487	36.00/1.417																
	75730-0111	11	41.78/1.645	40.00/1.575																
	75730-0112	12	45.78/1.802	44.00/1.732																
K	75730-0113	13	49.78/1.960	48.00/1.890																
	75730-0114	14	53.78/2.117	52.00/2.047																
	75730-0115	15	57.78/2.275	56.00/2.205	3.06/1.120	7.06/2.78	1.60/0.62 TO 2.44/0.96													
	75730-0116	16	61.78/2.433	60.00/2.362																
	75730-0117	17	65.78/2.590	64.00/2.520																
J	75730-0118	18	69.78/2.747	68.00/2.677																
	75730-0119	19	73.78/2.905	72.00/2.835																
	75730-0120	20	77.78/3.062	76.00/2.992																
	75730-0121	21	81.78/3.220	80.00/3.150																
	75730-0122	22	85.78/3.377	84.00/3.307																
I	75730-0123	23	89.78/3.535	88.00/3.465																
	75730-0124	24	93.78/3.692	92.00/3.622																
	75730-0150	MIXED CL	83.78/3.298	82.00/3.228																
H	75730-0204	4	13.78/1.543	12.00/1.472																
	75730-0205	5	17.78/1.700	16.00/1.630																
	75730-0206	6	21.78/1.857	20.00/1.787																
	75730-0207	7	25.78/1.015	24.00/1.945																
G	75730-0208	8	29.78/1.172	28.00/1.102																
	75730-0209	9	33.78/1.330	32.00/1.260																
	75730-0210	10	37.78/1.487	36.00/1.417																
	75730-0211	11	41.78/1.645	40.00/1.575																
	75730-0212	12	45.78/1.802	44.00/1.732																
F	75730-0213	13	49.78/1.960	48.00/1.890																
	75730-0214	14	53.78/2.117	52.00/2.047																
	75730-0215	15	57.78/2.275	56.00/2.205	3.81/1.150	7.82/3.08	3.18/1.125													
	75730-0216	16	61.78/2.433	60.00/2.362																
	75730-0217	17	65.78/2.590	64.00/2.520																
E	75730-0218	18	69.78/2.747	68.00/2.677																
	75730-0219	19	73.78/2.905	72.00/2.835																
	75730-0220	20	77.78/3.062	76.00/2.992																
	75730-0221	21	81.78/3.220	80.00/3.150																
	75730-0222	22	85.78/3.377	84.00/3.307																
D	75730-0223	23	89.78/3.535	88.00/3.465																
	75730-0224	24	93.78/3.692	92.00/3.622																
	75730-0250	MIXED CL	83.78/3.298	82.00/3.228																
	75730-0251	MIXED CL	83.78/3.298	82.00/3.228																

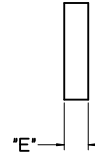
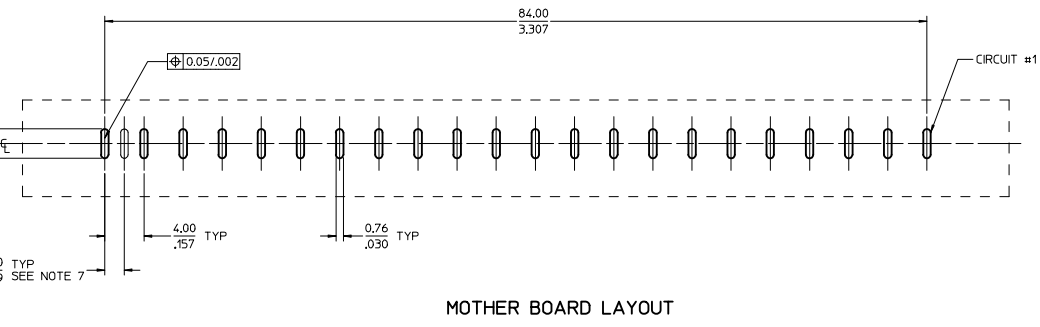
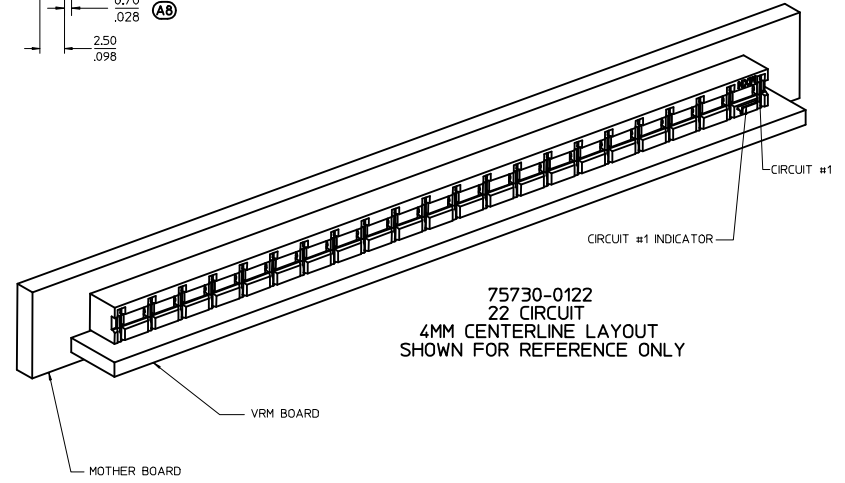
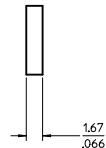
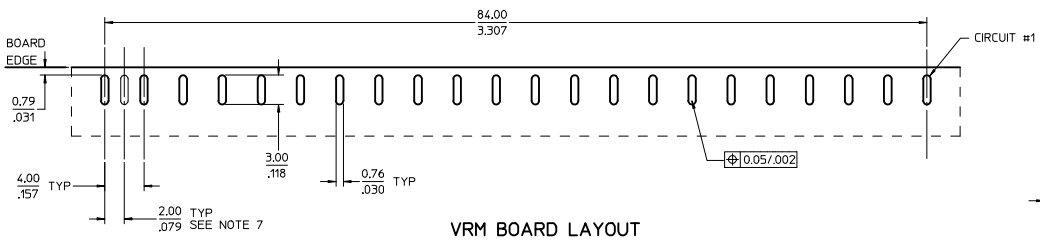
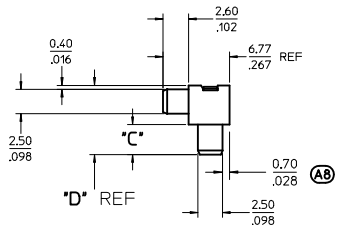
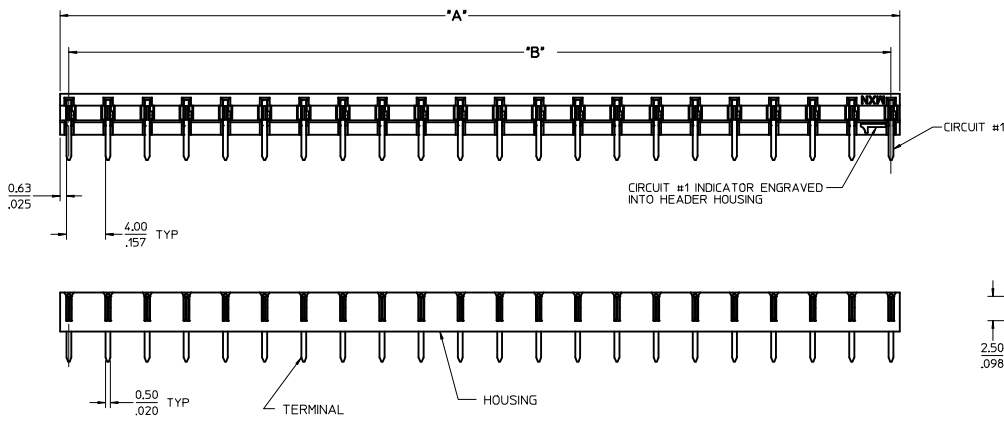
NOTES:
1. MATERIALS:
- HOUSING: LCP, 30% GLASS FILLED, 94V-0, COLOR: BLACK
- TERMINAL: COPPER ALLOY
PLATING:
- 2.50 μ m/100 μ m MIN TIN OVER
- 1.25 μ m/50 μ m MIN NICKEL OVERALL
2. PRODUCT SPEC: PS-75730
3. MODULE IS DESIGNED FOR SOLDERING TO THE PCB
4. MODULE IS RoHS COMPLIANT
5. BOW, FLATNESS AND CAMBER SPECIFICATIONS ARE 0.25/0.10 PER INCH
6. PARTS TO BE PACKAGED PER MOLEX PACKAGING SPEC PK-75730-118

(A9)

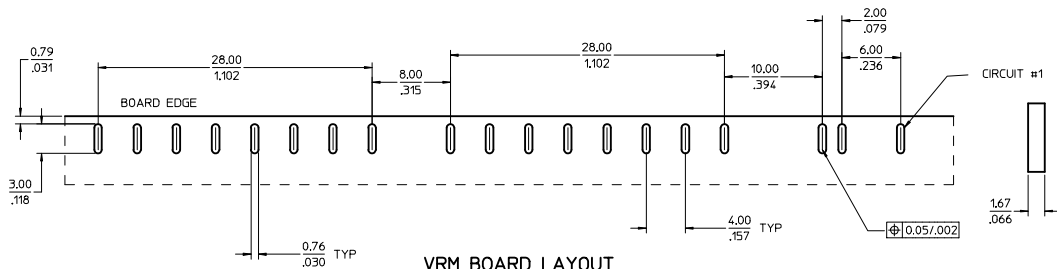
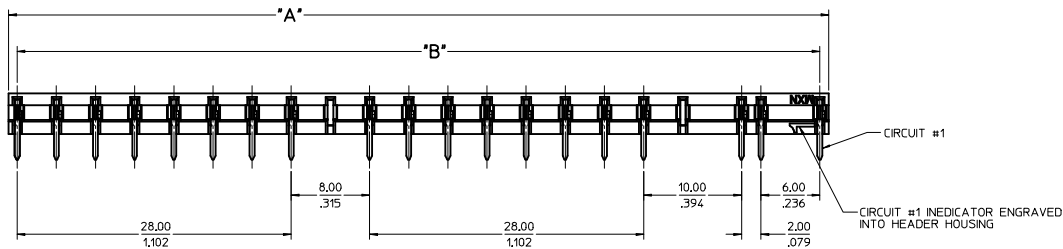
(A9)

(A9)

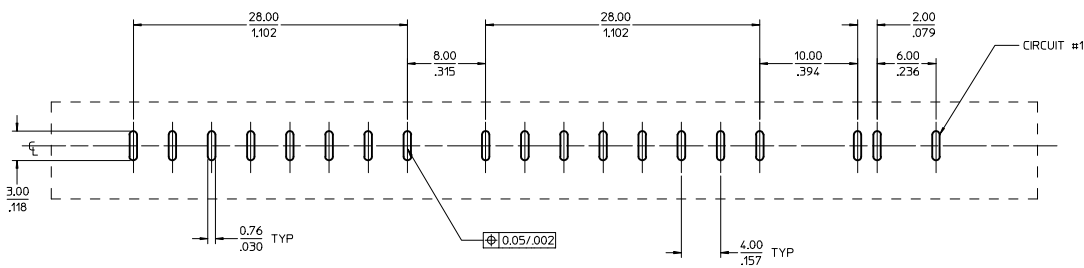
REMOVE -0147 EC NO: UCP2012-2242 DRAWN: BANDURA 2012/01/17 CHKD: APPR: APATEL REV:	QUALITY SYMBOLS	GENERAL TOLERANCES (UNLESS SPECIFIED)	DIMENSION STYLE	SCALE	DESIGN UNITS	THIRD ANGLE PROJECTION
	▽=0	4 PLACES ±.005 ±.005	MM/IN	1:1	METRIC	ASSEMBLY VRM HEADER FOR BOARD TO BOARD
	▽=0	3 PLACES ±.013 ±.010				MOLEX INCORPORATED
	▽=0	1 PLACE ±0.25 ±.005				SD-75730-118
		DRAFT WHERE APPLICABLE MUST REMAIN WITHIN DIMENSIONS	SEE CHART			
			SIZE D			



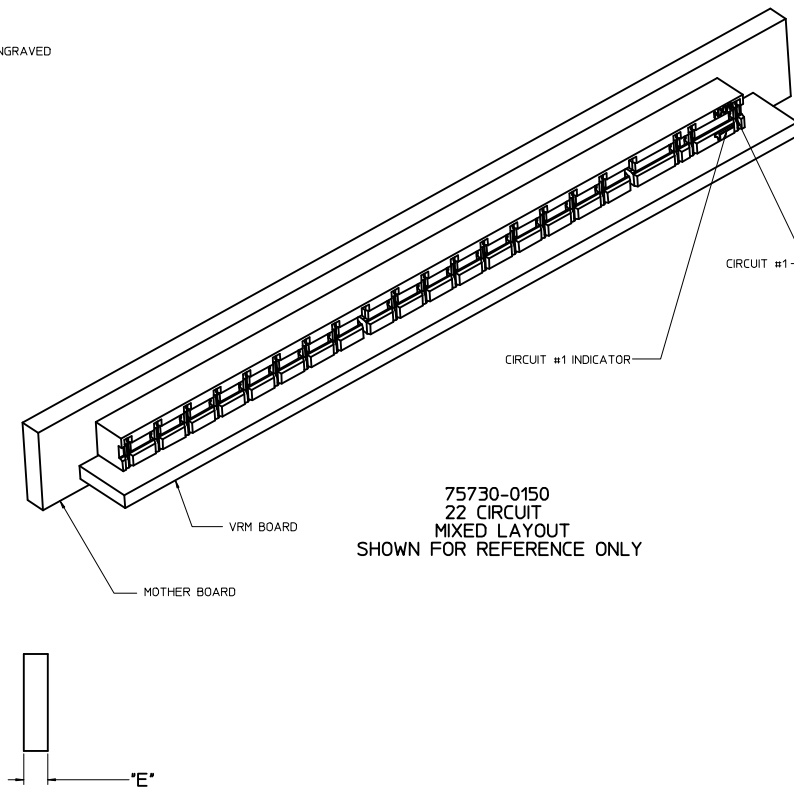
SEE SHEET 1 IEC NO: UCP2012-2242 DRAWN BY: DRW:RABANDURA CHKD: CHYD: APPR: APATEL DATE: 2012/01/17 2013/12/19	QUALITY SYMBOLS	GENERAL TOLERANCES (UNLESS SPECIFIED)	DIMENSION STYLE	SCALE	DESIGN UNITS	THIRD ANGLE PROJECTION	
	4 PLACES ± 0 3 PLACES ± 0.005 2 PLACES ± 0.13 1 PLACE ± 0.25	mm INCH --- --- --- --- --- --- --- --- ANGULAR $\pm 1/2^\circ$	MM/IN 4:1	METRIC	DATE 2005/05/03 DATE 2005/05/03 DATE 2005/05/03	TITLE ASSEMBLY VRM HEADER FOR BOARD TO BOARD	MOLEX INCORPORATED
	DRAFT WHERE APPLICABLE MUST REMAIN WITHIN DIMENSIONS	MATERIAL NO. SEE CHART	DOCUMENT NO. SD-75730-118	SHEET NO. 2 OF 4			



VRM BOARD LAYOUT



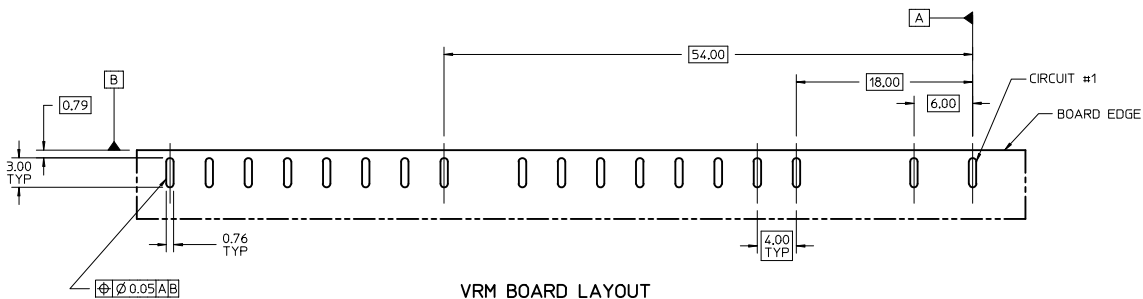
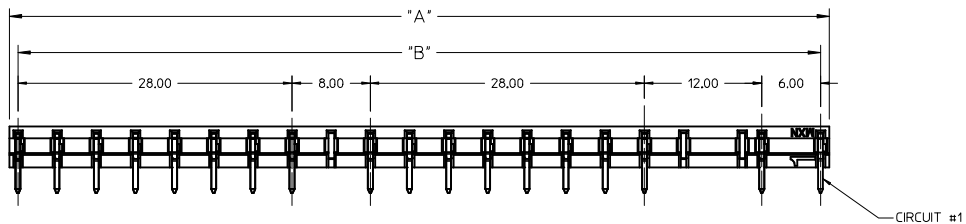
MOTHER BOARD LAYOUT



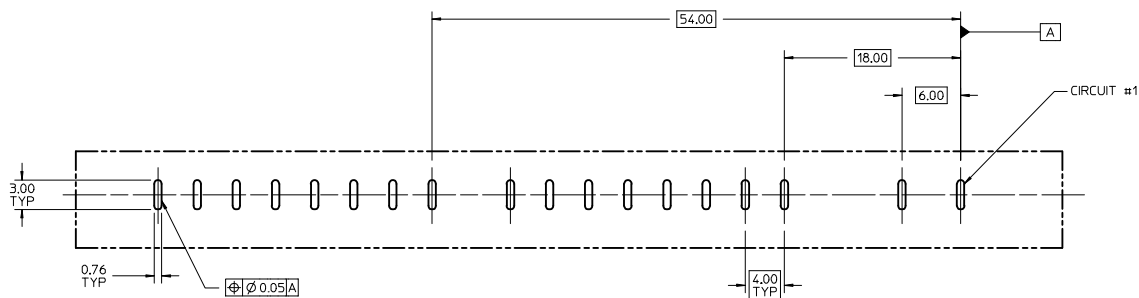
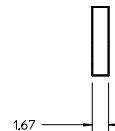
75730-0150
22 CIRCUIT
MIXED LAYOUT
SHOWN FOR REFERENCE ONLY

SEE SHEET 1 IEC NO. UCF2012-2242 DRAWN BY: DRW:MBANDURA CHKD: APATL APPR: APATL DATE: 2012/01/17 2013/12/19	QUALITY SYMBOLS	GENERAL TOLERANCES (UNLESS SPECIFIED)	DIMENSION STYLE	SCALE	DESIGN UNITS	THIRD ANGLE PROJECTION	
	$\nabla=0$	mm INCH	MM/IN	4:1	METRIC		
	$\nabla=0$	4 PLACES ± --- ± --- 3 PLACES ± --- ± .005 2 PLACES ± 0.13 ± .010 1 PLACE ± 0.25 ± ---	DRAWN BY: ADRA TNOL CHECKED BY: DATE APATEL 2005/05/03 APATEL 2005/05/03	TITLE	ASSEMBLY VRM HEADER FOR BOARD TO BOARD		
	$\nabla=0$	DRAFT WHERE APPLICABLE MUST REMAIN WITHIN DIMENSIONS	APPROVED BY: DATE APATEL 2005/05/03	MATERIAL NO. SEE CHART	DOCUMENT NO. SD-75730-118	MOLEX INCORPORATED	
		SIZE D		SHEET NO. 3 OF 4			
THIS DRAWING CONTAINS INFORMATION THAT IS PROPRIETARY TO MOLEX INCORPORATED AND SHOULD NOT BE USED WITHOUT WRITTEN PERMISSION							

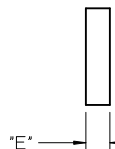
20 19 18 17 16 15 14 13 12 11 10 9 8 7 6 5 4 3 2 1



VRM BOARD LAYOUT



MOTHER BOARD LAYOUT



75730-0251 SHOWN
18 CIRCUIT
MIXED LAYOUT

SEE SHEET 1 IEC NO: UCP2012-2242 DRAWN: BANAJIRA 2012/01/17 CHKD: CHYK APPR: APATEL 2013/12/19	QUALITY SYMBOLS	GENERAL TOLERANCES (UNLESS SPECIFIED)	DIMENSION STYLE	SCALE	DESIGN UNITS	THIRD ANGLE PROJECTION	
	$\nabla=0$ $\nabla=0$ $\nabla=0$	mm INCH 4 PLACES ± --- ± --- 3 PLACES ± --- ± .005 2 PLACES ± 0.13 ± .010 1 PLACE ± 0.25 ± --- ANGULAR ±1/2°	MM/IN 4:1	METRIC	DATE 2005/05/03	DATE 2005/05/03	TITLE ASSEMBLY VRM HEADER FOR BOARD TO BOARD
	MATERIAL NO. SEE CHART	DATE 2005/05/03	MOLEX INCORPORATED	DOCUMENT NO. SD-75730-118	SHEET NO. 4 OF 4		
	DRAFT WHERE APPLICABLE MUST REMAIN WITHIN DIMENSIONS						THIS DRAWING CONTAINS INFORMATION THAT IS PROPRIETARY TO MOLEX INCORPORATED AND SHOULD NOT BE USED WITHOUT WRITTEN PERMISSION

19 18 17 16 15 14 13 12 11 10 9 8 7 6 5 4 3 2 1

	20	19	18	17	16	15	14	13	12	11	10	9	8	7	6	5	4	3	2	1			
	PART NO.	CKT SIZE	DIM 'A'	DIM 'B'	DIM 'C'	DIM 'D' REF	DIM 'E'																
M	75730-0104	4	13.78/1.543	12.00/1.472	3.06/1.20	7.06/2.78	1.60/0.62 TO 2.44/0.96																
	75730-0105	5	17.78/1.700	16.00/1.630																			
	75730-0106	6	21.78/1.857	20.00/1.787																			
	75730-0107	7	25.78/1.015	24.00/1.945																			
	75730-0108	8	29.78/1.172	28.00/1.102																			
L	75730-0109	9	33.78/1.330	32.00/1.260																			
	75730-0110	10	37.78/1.487	36.00/1.417																			
	75730-0111	11	41.78/1.645	40.00/1.575																			
	75730-0112	12	45.78/1.802	44.00/1.732																			
	75730-0113	13	49.78/1.960	48.00/1.890																			
K	75730-0114	14	53.78/2.117	52.00/2.047																			
	75730-0115	15	57.78/2.275	56.00/2.205																			
	75730-0116	16	61.78/2.433	60.00/2.362																			
	75730-0117	17	65.78/2.590	64.00/2.520																			
J	75730-0118	18	69.78/2.747	68.00/2.677																			
	75730-0119	19	73.78/2.905	72.00/2.835																			
	75730-0120	20	77.78/3.062	76.00/2.992																			
	75730-0121	21	81.78/3.220	80.00/3.150																			
	75730-0122	22	85.78/3.377	84.00/3.307																			
I	75730-0123	23	89.78/3.535	88.00/3.465																			
	75730-0124	24	93.78/3.692	92.00/3.622																			
	75730-0150	MIXED CL	83.78/3.298	82.00/3.228																			
H	75730-0204	4	13.78/1.543	12.00/1.472	3.81/1.50	7.82/3.08	3.18/1.25																
	75730-0205	5	17.78/1.700	16.00/1.630																			
	75730-0206	6	21.78/1.857	20.00/1.787																			
	75730-0207	7	25.78/1.015	24.00/1.945																			
	75730-0208	8	29.78/1.172	28.00/1.102																			
G	75730-0209	9	33.78/1.330	32.00/1.260																			
	75730-0210	10	37.78/1.487	36.00/1.417																			
	75730-0211	11	41.78/1.645	40.00/1.575																			
	75730-0212	12	45.78/1.802	44.00/1.732																			
	75730-0213	13	49.78/1.960	48.00/1.890																			
F	75730-0214	14	53.78/2.117	52.00/2.047																			
	75730-0215	15	57.78/2.275	56.00/2.205																			
	75730-0216	16	61.78/2.433	60.00/2.362																			
	75730-0217	17	65.78/2.590	64.00/2.520																			
E	75730-0218	18	69.78/2.747	68.00/2.677																			
	75730-0219	19	73.78/2.905	72.00/2.835																			
	75730-0220	20	77.78/3.062	76.00/2.992																			
	75730-0221	21	81.78/3.220	80.00/3.150																			
	75730-0222	22	85.78/3.377	84.00/3.307																			
D	75730-0223	23	89.78/3.535	88.00/3.465																			
	75730-0224	24	93.78/3.692	92.00/3.622																			
	75730-0250	MIXED CL	83.78/3.298	82.00/3.228																			
	75730-0251	MIXED CL	83.78/3.298	82.00/3.228																			

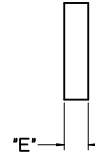
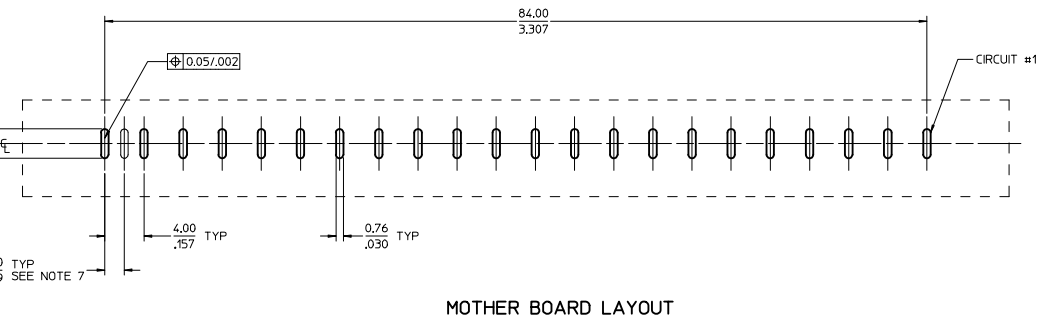
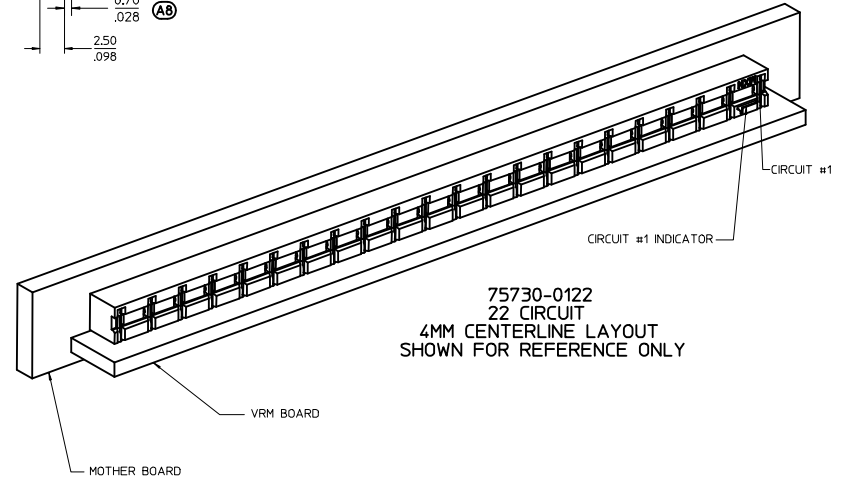
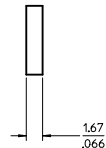
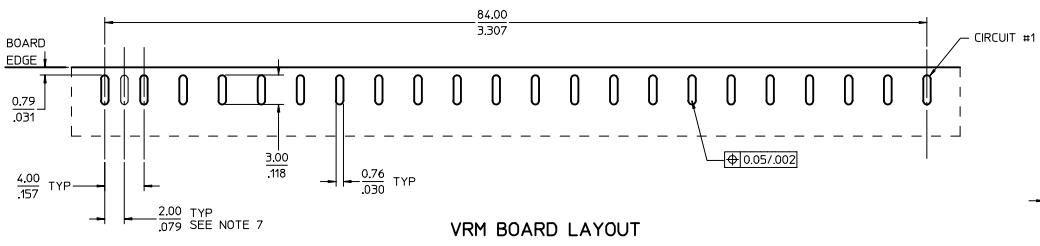
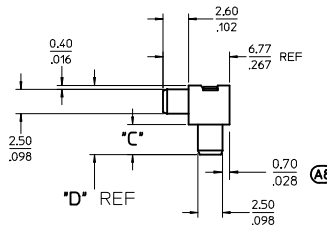
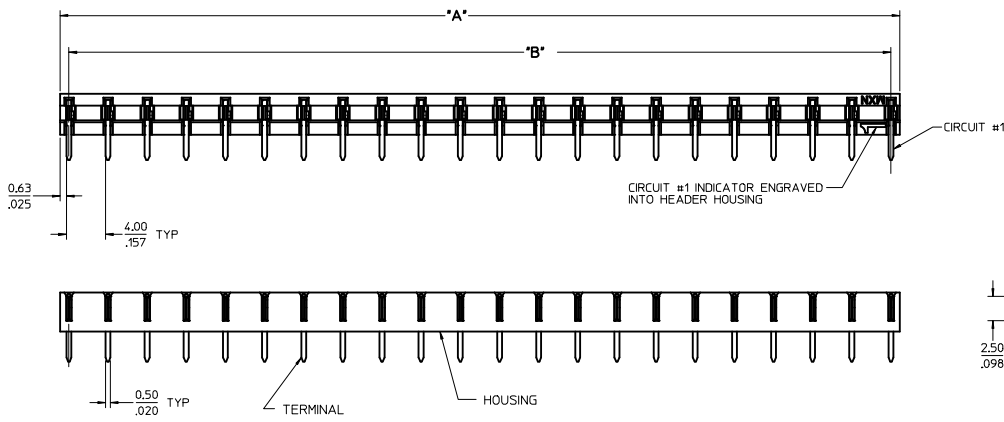
NOTES:
1. MATERIALS:
- HOUSING: LCP, 30% GLASS FILLED, 94V-0, COLOR: BLACK
- TERMINAL: COPPER ALLOY
PLATING:
- 2.50 μ m/100 μ m MIN TIN OVER
- 1.25 μ m/50 μ m MIN NICKEL OVERALL
2. PRODUCT SPEC: PS-75730
3. MODULE IS DESIGNED FOR SOLDERING TO THE PCB
4. MODULE IS RoHS COMPLIANT
5. BOW, FLATNESS AND CAMBER SPECIFICATIONS ARE 0.25/0.10 PER INCH
6. PARTS TO BE PACKAGED PER MOLEX PACKAGING SPEC PK-75730-118

(A9)

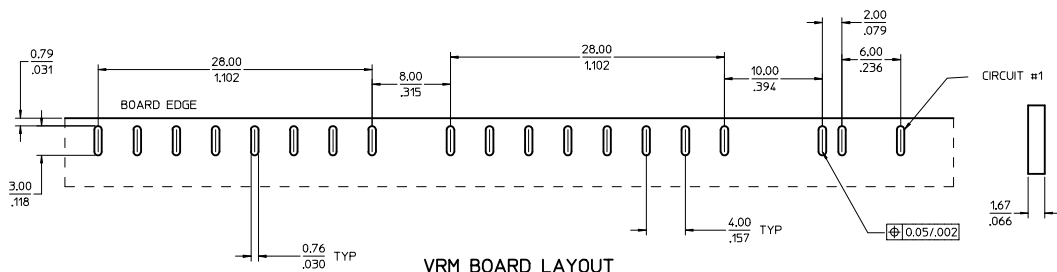
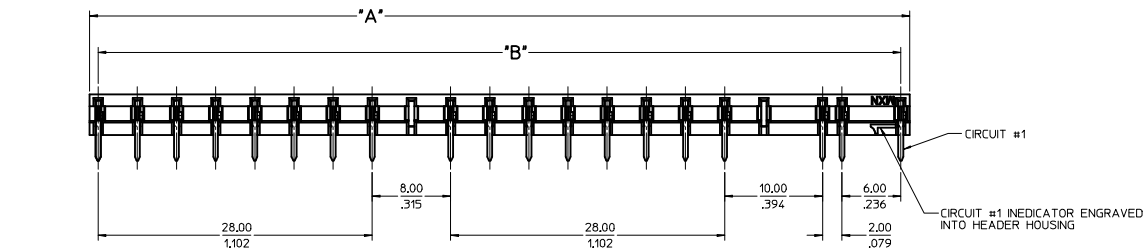
(A9)

(A9)

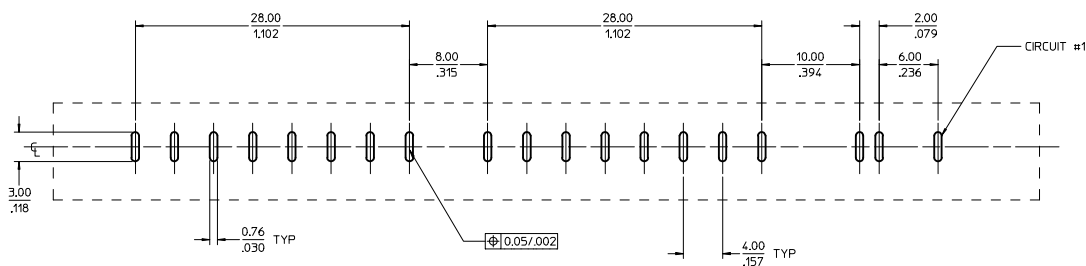
REMOVE -0147 EC NO: UCP2012-2242 DRAWN: BANDURA 2012/01/17 CHKD: APPR: APATEL REV:	QUALITY SYMBOLS	GENERAL TOLERANCES (UNLESS SPECIFIED)	DIMENSION STYLE	SCALE	DESIGN UNITS	THIRD ANGLE PROJECTION
	▽=0	4 PLACES ±.005 ±.005	MM/IN	1:1	METRIC	
	▽=0	3 PLACES ±.013 ±.010				
	▽=0	2 PLACES ±.025 ±.025				
		ANGULAR ±1/2°				
		DRAFT WHERE APPLICABLE MUST REMAIN WITHIN DIMENSIONS	SEE CHART			
			DRAWN BY DATE	CHECKED BY DATE	APPROVED BY DATE	
			AD RATNOL 2005/05/03	APATEL 2005/05/03	APATEL 2005/05/03	
			MOLEX INCORPORATED SD-75730-118			
			MATERIAL NO.	DOCUMENT NO.	SHEET NO.	
					1 OF 4	



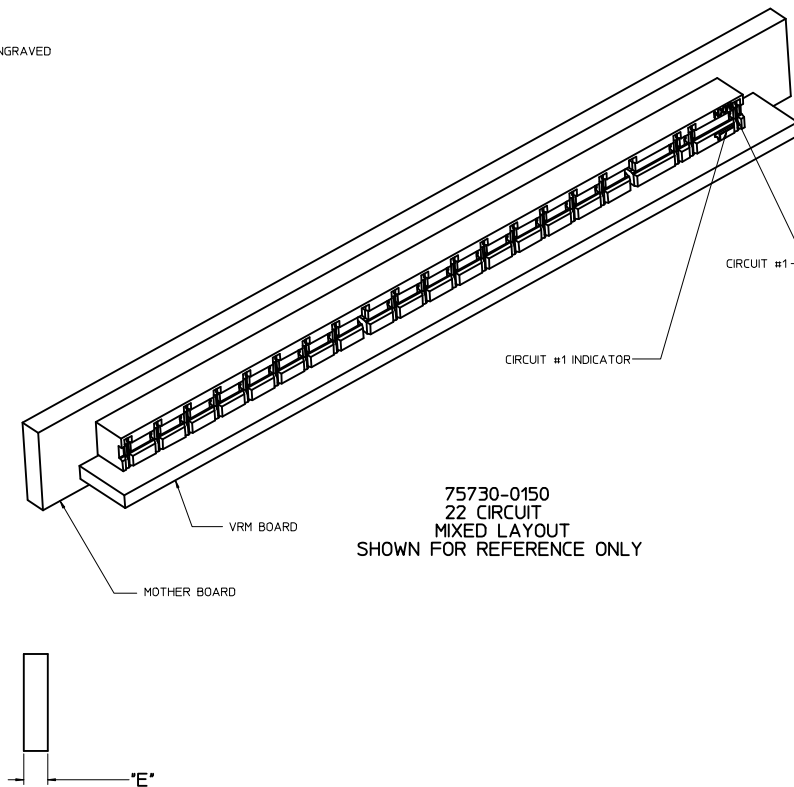
SEE SHEET 1 IEC NO: UCP2012-2242 DRAWN BY: DRW:RABANDURA CHKD: CHYD: APPR: APATEL DATE: 2012/01/17 DATE: 2013/12/19	QUALITY SYMBOLS	GENERAL TOLERANCES (UNLESS SPECIFIED)	DIMENSION STYLE	SCALE	DESIGN UNITS	THIRD ANGLE PROJECTION
	∇=0 ∇=0 ∇=0	mm INCH 4 PLACES ± --- ± --- 3 PLACES ± --- ± .005 2 PLACES ± 0.13 ± .010 1 PLACE ± 0.25 ± --- ANGULAR ±1/2°	MM/IN 4:1	METRIC	ASSEMBLY VRM HEADER FOR BOARD TO BOARD	MOLEX INCORPORATED
	DRAFT WHERE APPLICABLE MUST REMAIN WITHIN DIMENSIONS	DRAWN BY: ADRA TNOL CHECKED BY: DATE APATEL 2005/05/03 APPROVED BY: DATE APATEL 2005/05/03	MATERIAL NO. SEE CHART	DOCUMENT NO. SD-75730-118	SHEET NO. 2 OF 4	



VRM BOARD LAYOUT



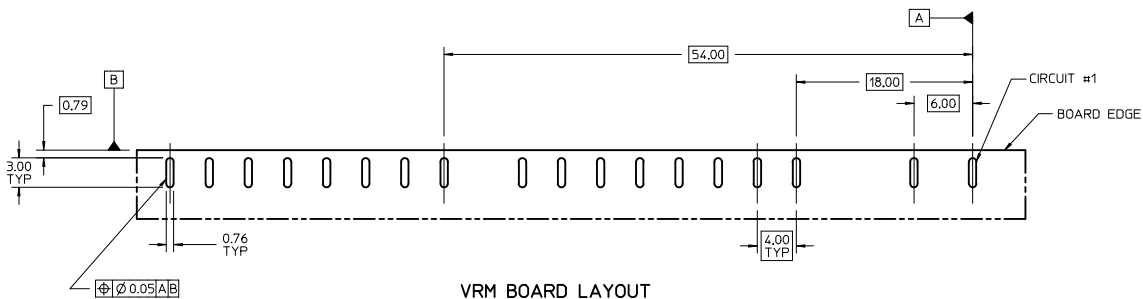
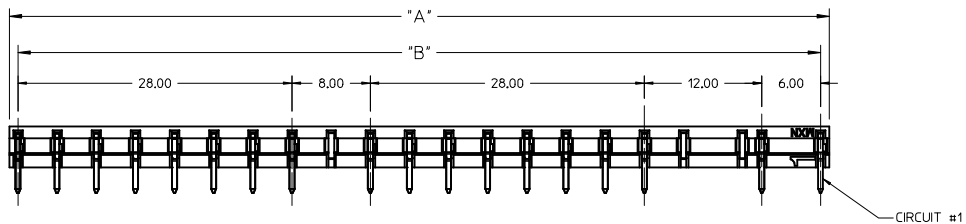
MOTHER BOARD LAYOUT



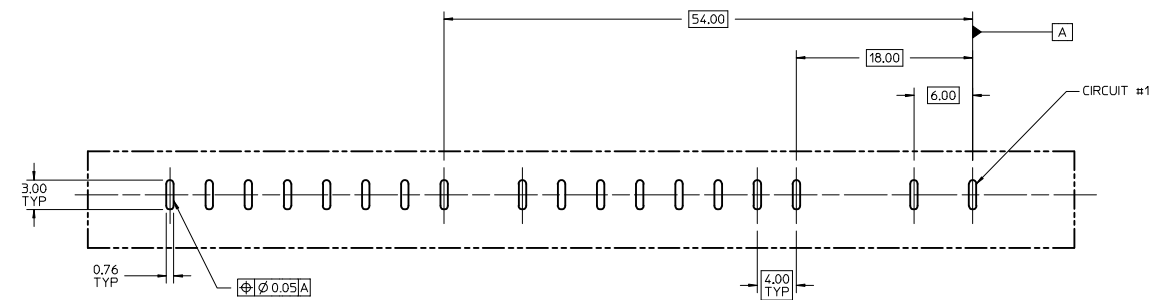
75730-0150
22 CIRCUIT
MIXED LAYOUT
SHOWN FOR REFERENCE ONLY

SEE SHEET 1 IEC NO. UCF2012-2242 DRAWN BY: DRW:MBANDURA CHKD: APATTEL APPR: APATTEL DATE: 2012/01/17 2013/12/19	QUALITY SYMBOLS	GENERAL TOLERANCES (UNLESS SPECIFIED)	DIMENSION STYLE	SCALE	DESIGN UNITS	THIRD ANGLE PROJECTION	
	$\nabla=0$	mm INCH	MM/IN	4:1	METRIC		
	$\nabla=0$	4 PLACES ± --- ± --- 3 PLACES ± --- ± .005 2 PLACES ± 0.13 ± .010 1 PLACE ± 0.25 ± ---	DRAWN BY: ADRA TNOL CHECKED BY: DATE APATEL 2005/05/03 APATEL 2005/05/03	TITLE	ASSEMBLY VRM HEADER FOR BOARD TO BOARD		
	$\nabla=0$	DRAFT WHERE APPLICABLE MUST REMAIN WITHIN DIMENSIONS	APPROVED BY: DATE APATEL 2005/05/03	MATERIAL NO. SEE CHART	DOCUMENT NO. SD-75730-118	MOLEX INCORPORATED	
		SIZE D		SHEET NO. 3 OF 4		THIS DRAWING CONTAINS INFORMATION THAT IS PROPRIETARY TO MOLEX INCORPORATED AND SHOULD NOT BE USED WITHOUT WRITTEN PERMISSION	

20 19 18 17 16 15 14 13 12 11 10 9 8 7 6 5 4 3 2 1



VRM BOARD LAYOUT



MOTHER BOARD LAYOUT

75730-0251 SHOWN
18 CIRCUIT
MIXED LAYOUT

SEE SHEET 1 IEC NO: UCP2012-2242 DRAWN BY: DR. V. BANAJIA CHKD: CHYD APPR: APATEL DATE: 2012/01/17 DATE: 2013/12/19	QUALITY SYMBOLS	GENERAL TOLERANCES (UNLESS SPECIFIED)	DIMENSION STYLE	SCALE	DESIGN UNITS	THIRD ANGLE PROJECTION	
	$\nabla=0$ $\nabla=0$ $\nabla=0$	mm INCH 4 PLACES ± --- ± --- 3 PLACES ± --- ± .005 2 PLACES ± 0.13 ± .010 1 PLACE ± 0.25 ± --- ANGULAR ±1/2°	MM/IN 4:1	METRIC	DATE DRAWN BY: ADRA TNOL 2005/05/03 CHECKED BY: DATE APATEL 2005/05/03 APPROVED BY: DATE APATEL 2005/05/03	TITLE ASSEMBLY VRM HEADER FOR BOARD TO BOARD	MOLEX INCORPORATED
	DRAFT WHERE APPLICABLE MUST REMAIN WITHIN DIMENSIONS	MATERIAL NO. SEE CHART	DOCUMENT NO. SD-75730-118	SHEET NO. 4 OF 4			
	THIS DRAWING CONTAINS INFORMATION THAT IS PROPRIETARY TO MOLEX INCORPORATED AND SHOULD NOT BE USED WITHOUT WRITTEN PERMISSION						

19 18 17 16 15 14 13 12 11 10 9 8 7 6 5 4 3 2 1