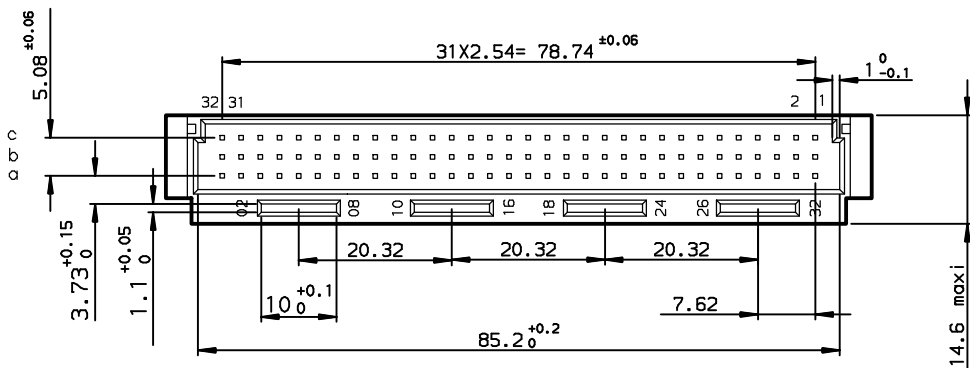
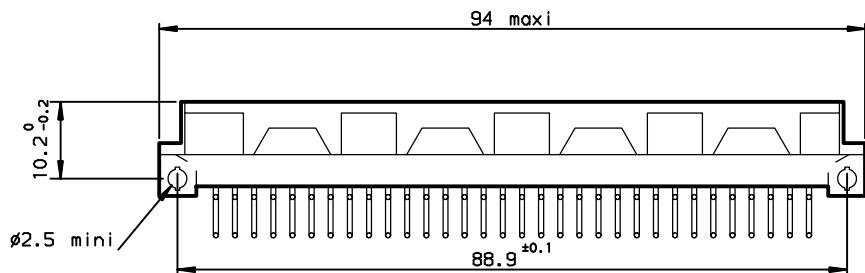
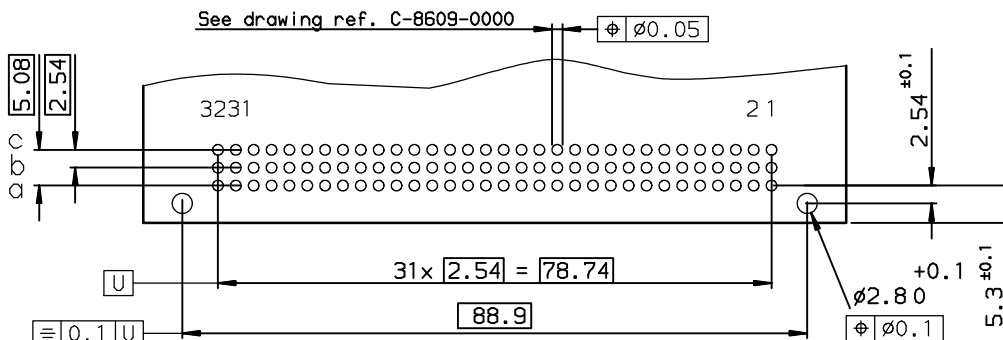


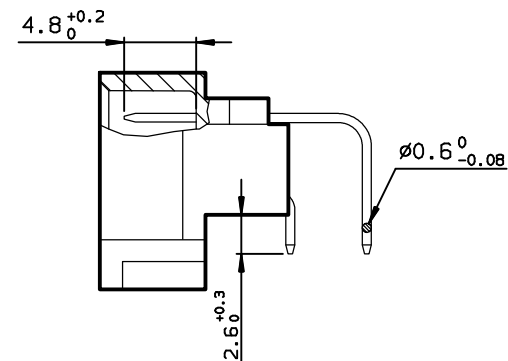
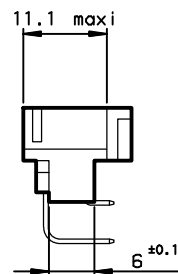
DIMENSIONS



P.C. CARD DRILLING (Component side view)



TERMINATION



TIN LEAD PART NUMBER

PART NUMBER

8609464113765000E1

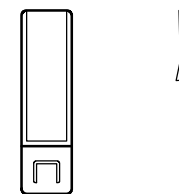
LEAD FREE PART NUMBER

PART NUMBER

8609464113765E1LF

LATCH : part number 8609-409

to be ordered separately



GENERAL CHARACTERISTICS AND ROHS INFORMATIONS:

SEE DRAWING C-8609-0000A

European Views

www.fciconnect.com		surface ISO 1302 ✓	tolerance std ISO 406 ISO 1101	projection mm	TOLERANCES UNLESS OTHERWISE SPECIFIED	
Dr	ROUILLARD	2002/08/01	ANGULAR	LINEAR	0.x ±0.1	size A3
Eng	TARON	2002/08/01	0.xx ±0.1	0.xxx ±0.1	Scale 1.5	
Chr	LEGARE	2002/08/01	0.xx* ±2*		ECN L506-0095	
Appr	LEGARE	2002/08/01	Product family	DIN 8609	Spec ref -	
title STANDARD MALE 3 ROW			catg no -		Rev. C	
64 CONTACTS			C-8609-1139		CUSTOMER sheet 1 of 1	

rev	ecn no	dr	date
A	-	-	2002/08/01
B	LS05-001	JTA	2005/03/03
C	LS06-0095	LGO	2006/06/28
-	-	-	-
-	-	-	-
-	-	-	-
-	-	-	-



Copyright FCI.