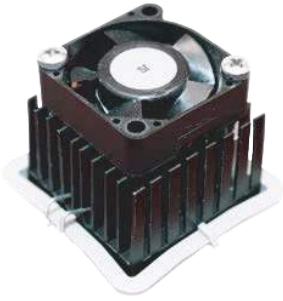


# BGA Heat Sink - High Performance fanSINK™ with maxiGRIP™ Attachment



**ATS Part#:** **ATS-61310R-C1-R0**  
**Description:** 31.00 x 31.00 x 19.50 mm BGA Heat Sink - High Performance fanSINK™ with maxiGRIP™ Attachment  
**Heat Sink Type:** fanSINK  
**Heat Sink Attachment:** maxiGRIP  
**Equivalent Part Number:** N/A

## Features & Benefits

- » X-Cut straightFIN heatsink fins offer omnidirectional air flow for optimum thermal performance independent of PCB lay-out
- » Stainless steel screw fan attachment ensures dependable long-term fan to heat sink assembly. 4-40 thread screws are supplied in 4 lengths (1/2", 3/4", 7/8", 1"). Contact ATS for custom options available.
- » Product hole pattern is 20 mm C-C (center to center)
- » Component Attachment: ATS maxiGRIP™ is a proven high reliability mechanical attachment system
- » Meets Telecordia GR-63-Core Office Vibration; ETSI 300 019 Transportation Vibration; and MIL-STD-810 Shock Testing and Unpackaged Drop Testing Standards
- » maxiGRIP™ hardware includes a high performance plastic frame clip and 300 Series stainless steel spring clip-avoiding PCB through holes
- » Provided with pre-assembled Thermal Interface Material (TIM) centered on base
- » "Keep-Out" Requirements: An "Un-Populated" boarder zone of 5mm around the component is necessary to facilitate the installation/removal of the maxiGRIP™. Please refer to the maxiGRIP™ Keep-Out Guidelines and Installation/Removal Instructions for further details

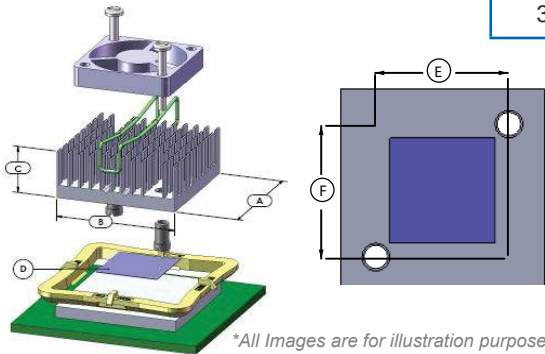
## Thermal Performance

AIR VELOCITY		@200 LFM 1.0 M/S	@300 LFM 1.5 M/S	@400 LFM 2.0 M/S	@500 LFM 2.5 M/S	@600 LFM 3.0 M/S	@700 LFM 3.5 M/S	@800 LFM 4.0 M/S
THERMAL RESISTANCE	Unducted Flow	1.90	N/A	N/A	N/A	N/A	N/A	N/A
	Ducted Flow	0.00	N/A	N/A	N/A	N/A	N/A	N/A

## Suggested Fan (Not Included)

Manufacturer	Part #	Voltage	Dimensions (mm) L x H X W	Airflow
Sunon	MC30060V1-000U-A99	5VDC	30 x 30 x 6.9	4.9 CFM (0.137m³/min)
Sunon	MC30101V1-000U-A99	12VDC	30 x 30 x 10	5.5 CFM (0.154m³/min)

## Product Details

SCHEMATIC IMAGE	Dimension A	Dimension B	Dimension C	Dimension D	TIM	Finish
	30.25	30.25	19.5	19	Chomerics T412	Black

### NOTES:

- 1) Fan not included. Fan type is specific to individual customer requirements and needs to be independently sourced.
- 2) Dimension A and B refer to component size.
- 3) Dimension C is the heat sink height from the bottom of the base to the top of the fin field.
- 4) Thermal performance data are provided for reference only. Actual performance may vary by application.
- 5) ATS reserves the right to update or change its products without notice to improve the design or performance.
- 6) ATS certifies that this heat sink assembly is RoHS-6 and REACH compliant.
- 7) Contact ATS to learn about custom options available.

\*All Images are for illustration purposes only.

REV2\_1118