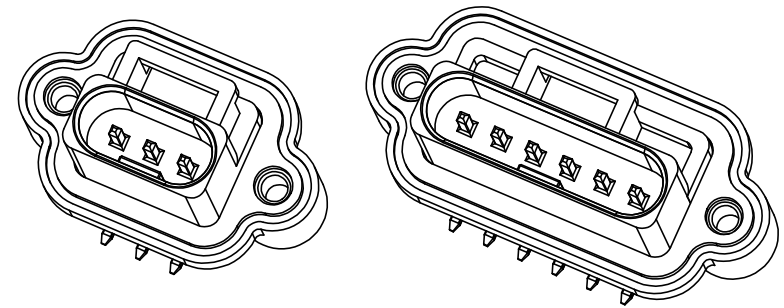


**ORDERING CODE: FLH - PX2 - XX**

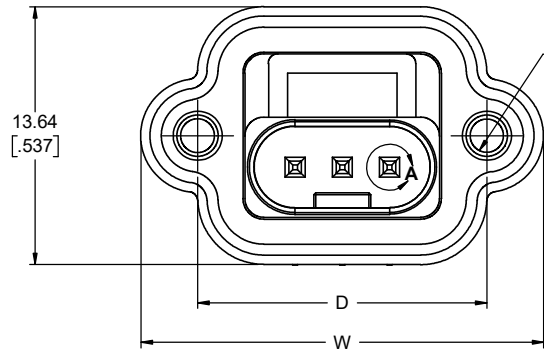
**SERIES**  
FLH  
**PIN HOUSING TYPE**  
P3 = 3 CONTACTS  
P6 = 6 CONTACTS

**IDENTIFIER**

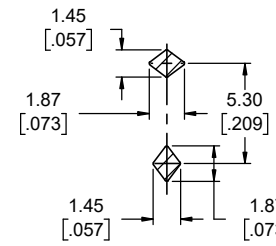
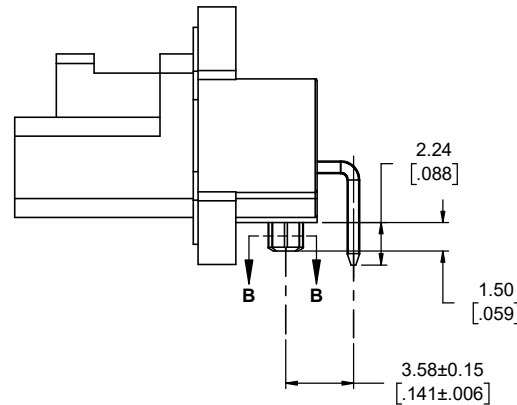
XX = 00 - PCB HOLE TAIL WITH #2-56 THREAD MOUNT  
 = 01 - PCB SMT TAIL WITH #2-56 THREAD MOUNT  
 = 02 - PCB HOLE TAIL WITH M2 X 0.4 THREAD MOUNT  
 = 03 - PCB SMT TAIL WITH M2 X 0.4 THREAD MOUNT



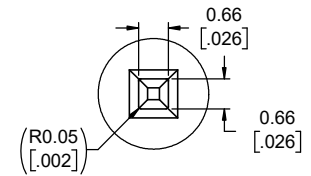
REVISIONS			
REV	DESCRIPTION, ECN, EAR NO.	DATE	APP'D
D	PRODUCT DWG - REV. PER EAR 15063	MAY25/22	S.M.
E	PRODUCT DWG - REV. PER EAR 15063	AUG03/22	S.M.
F	PRODUCT DWG - REV. PER EAR 15058	AUG10/22	S.M.



THREADED HOLE  
SEE ORDERING CODE  
3.00 MM DEEP  
2 PLCS



SECTION B-B

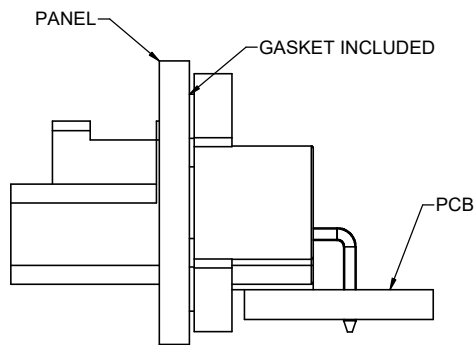


DETAIL A  
SCALE 12 : 1

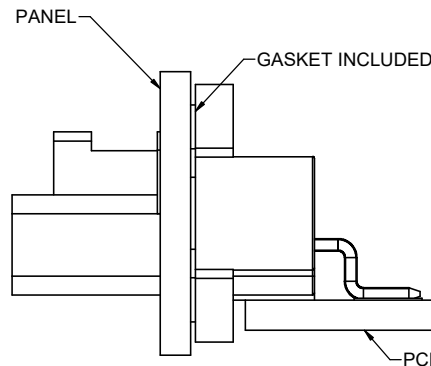
PIN HOUSING	W (mm)	D (mm)
P3	21.30	15.30
P6	28.80	22.80

**NOTES:**

- MATERIALS: ALL MATERIALS ARE RoHS COMPLIANT PER EU DIRECTIVE 2011/65/EU & AMENDMENTS
  - HOUSING: ENGINEERING THERMOPLASTIC, UL FLAMMABILITY RATING 94V-0, COLOUR BLACK
  - CONTACTS: COPPER ALLOY PLATED WITH TIN OVER NICKEL
  - GASKET: SILICONE RUBBER, UL FLAMMABILITY RATING 94V-0
  - THREADED INSERT: BRASS
- ELECTRICAL CHARACTERISTICS
  - CURRENT RATING: 7A
  - DIELECTRIC WITHSTANDING VOLTAGE: 1500 VAC
  - INSULATION RESISTANCE: 500 MEGAOHMS
  - OPERATING TEMPERATURE: -40 °C TO +105 °C.
- ENVIRONMENTAL PROTECTION: IP67 PER IEC 60529 IN MATED CONDITION.



PCB HOLE TAIL LAYOUT



PCB SMT TAIL LAYOUT

THIS DOCUMENT CONTAINS PROPRIETARY INFORMATION AND SUCH INFORMATION MAY NOT BE DISCLOSED TO OTHERS FOR ANY PURPOSE OR USED FOR MANUFACTURING PURPOSES WITHOUT WRITTEN PERMISSION FROM AMPHENOL CANADA CORP.

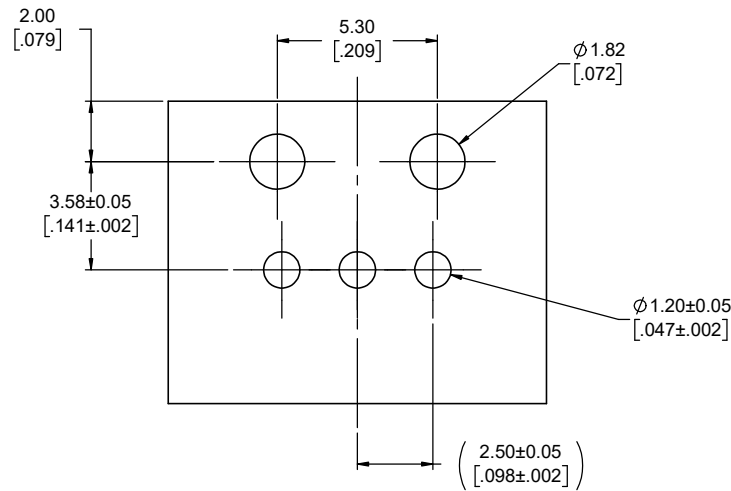
UNLESS SPECIFIED OTHERWISE	DRAWN	S. MUGAN	FEB01/22
PRIMARY UNITS MILLIMETERS	CHECKED	M. PAHLUJE	FEB03/22
SECONDARY UNITS INCHES	M.E. APP'D		
REFERENCE IN PARENTHESES	Q.A. APP'D		
GENERAL TOLERANCES	DWG APPR.		
1 DECIMAL PLACE	ENG. REL. NO.		
2 DECIMAL PLACES ±0.10	REF.		
3 DECIMAL PLACES	THIRD ANGLE PROJECTION		
ANGULAR DEGREES	DO NOT SCALE DRAWING		

**Amphenol Canada Corp.**  
Commercial Products

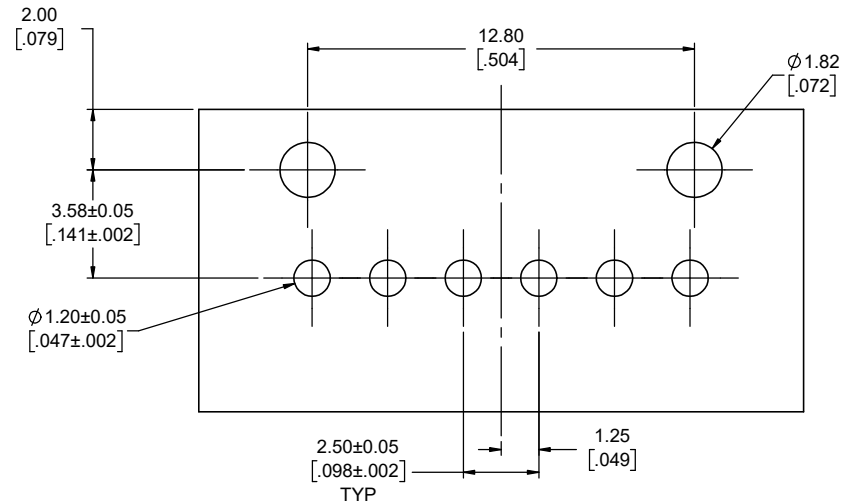
FLH SERIES, MINI SEALED 2.5mm PITCH  
RECEPTACLE BOARD MOUNT, 3 AND 6  
CONTACT OPTIONS, RoHS COMPLIANT

DWG. NO.	P-FLH-PX2-XX	REV	F
CODE ID NO. 03554	DWG SIZE: X	SCALE: 5:1	SHEET 1 OF 3

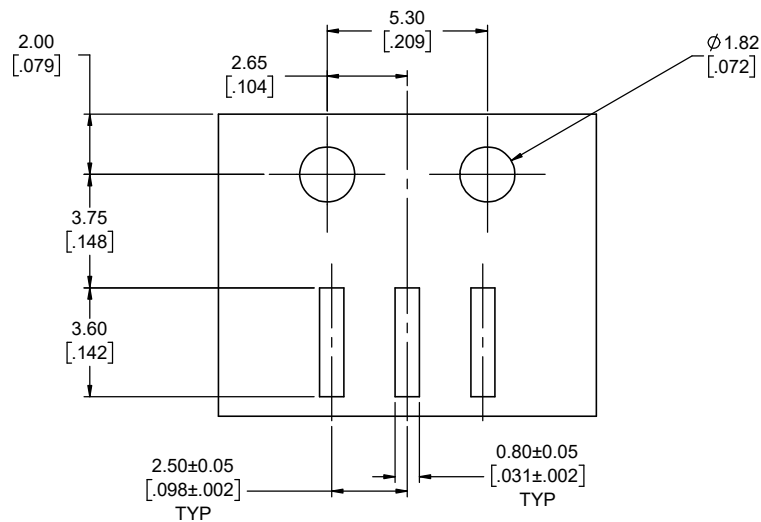
REVISIONS			
REV	DESCRIPTION, ECN, EAR NO.	DATE	APP'D
C	PRODUCT DWG. REV. PER EAR 15063	MAR18/22	S.M.
D	PRODUCT DWG. REV. PER EAR 15063	MAY25/22	S.M.
E	PRODUCT DWG. REV. PER EAR 15063	AUG03/22	S.M.



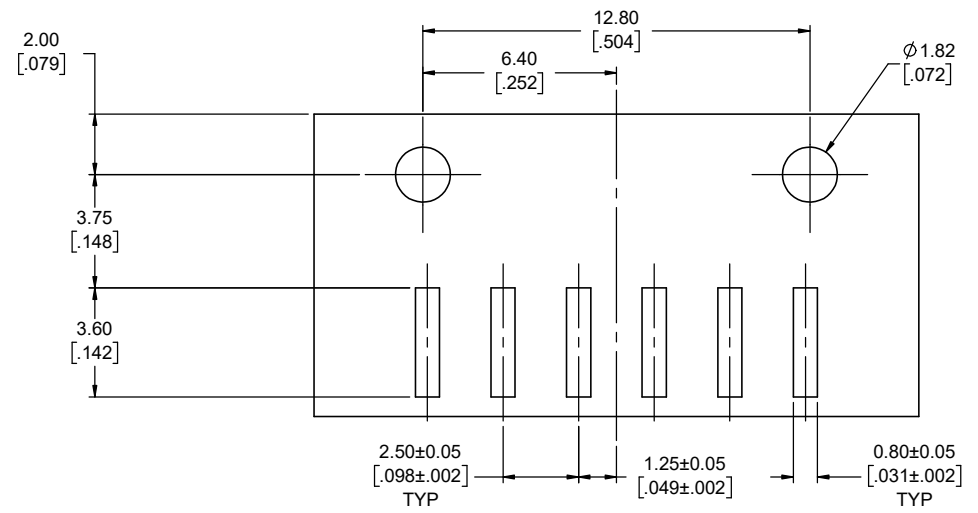
**SUGGESTED PCB HOLE TAIL LAYOUT 3 POSITIONS**



**SUGGESTED PCB HOLE TAIL LAYOUT 6 POSITIONS**



**SUGGESTED PCB SMT TAIL LAYOUT 3 POSITIONS**



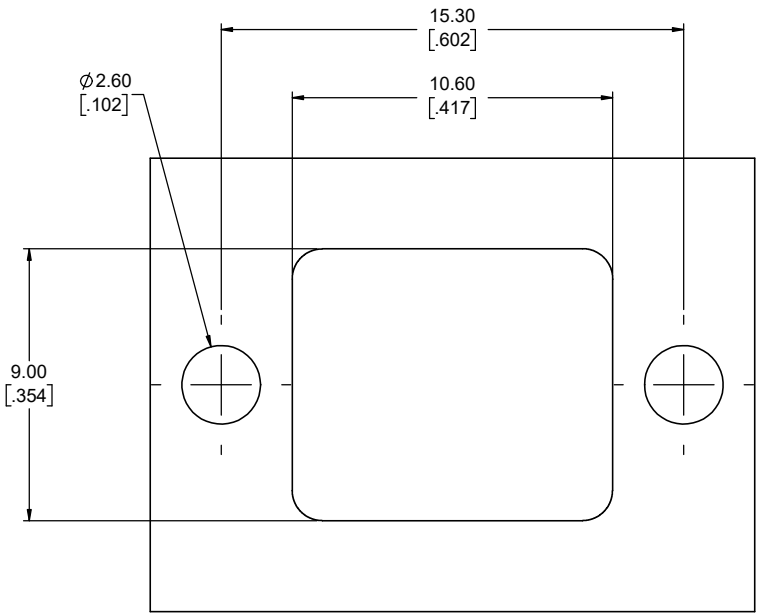
**SUGGESTED PCB SMT TAIL LAYOUT 6 POSITIONS**



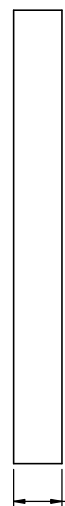
UNLESS SPECIFIED OTHERWISE	DRAWN	S. MUGAN	FEB01/22
PRIMARY UNITS MILLIMETERS	CHECKED	M. PAHULJE	FEB03/22
SECONDARY INCHES	M.E. APP'D		
REFERENCE IN PARENTHESES	Q.A. APP'D		
GENERAL TOLERANCES	DWG APPR.		
1 DECIMAL PLACE	ENG. REL. NO.		
2 DECIMAL PLACES ±0.10	REF.		
3 DECIMAL PLACES	THIRD ANGLE PROJECTION		
ANGULAR DEGREES	DO NOT SCALE DRAWING		

<b>Amphenol Canada Corp.</b> Commercial Products	
FLH SERIES, MINI SEALED 2.5mm PITCH PIN CONNECTOR BOARD MOUNT, 3 AND 6 CONTACT OPTIONS, RoHS COMPLIANT	
DWG. NO.	REV
<b>P-FLH-PX2-XX</b>	<b>E</b>
CODE ID NO. 03554	DWG SIZE: X
SCALE: 5:1	SHEET 2 OF 3

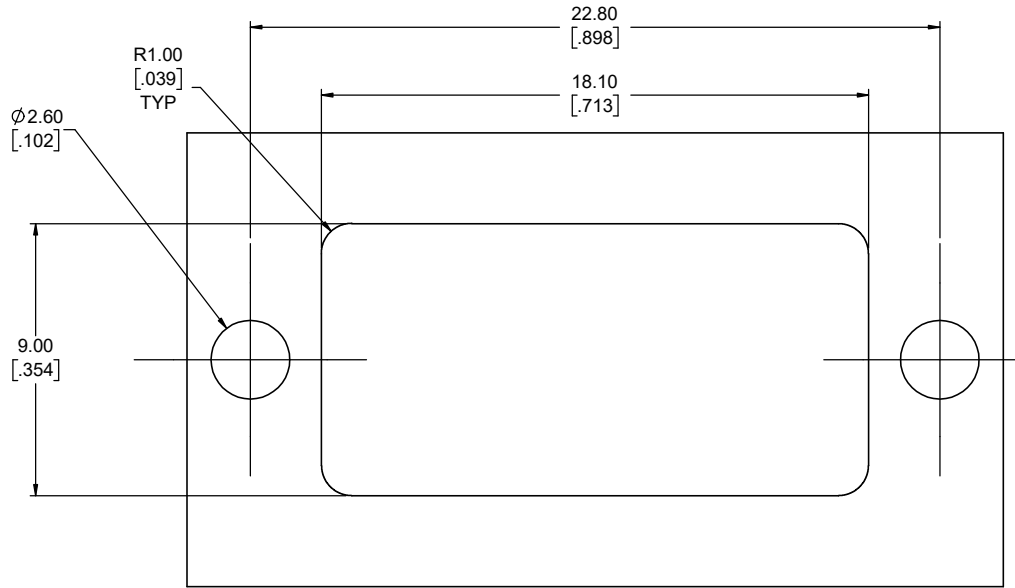
REVISIONS			
REV	DESCRIPTION, ECN, EAR NO.	DATE	APP'D
C	PRODUCT DWG. REV. PER EAR 15063	MAR18/22	S.M.
D	PRODUCT DWG. REV. PER EAR 15063	MAY25/22	S.M.
E	PRODUCT DWG. REV. PER EAR 15063	AUG03/22	S.M.



**SUGGESTED PANEL CUT OUT 3 POSITIONS**



**PANEL THICKNESS**



**SUGGESTED PANEL CUT OUT 6 POSITIONS**



UNLESS SPECIFIED OTHERWISE	DRAWN	S. MUGAN	FEB01/22
PRIMARY UNITS MILLIMETERS	CHECKED	M. PAHULJE	FEB03/22
SECONDARY REFERENCE IN PARENTHESES	M.E. APP'D		
	Q.A. APP'D		
GENERAL TOLERANCES	DWG APPR.		
1 DECIMAL PLACE	ENG. REL. NO.		
2 DECIMAL PLACES ±0.10	REF.		
3 DECIMAL PLACES	THIRD ANGLE PROJECTION		
ANGULAR DEGREES	DO NOT SCALE DRAWING		

**Amphenol Canada Corp.**  
Commercial Products

**FLH SERIES, MINI SEALED 2.5mm PITCH PIN CONNECTOR BOARD MOUNT, 3 AND 6 CONTACT OPTIONS, RoHS COMPLIANT**

DWG. NO.	<b>P-FLH-PX2-XX</b>	REV	<b>E</b>
CODE ID NO. 03554	DWG SIZE: X	SCALE: 5:1	SHEET 3 OF 3

THIS DOCUMENT CONTAINS PROPRIETARY INFORMATION AND SUCH INFORMATION MAY NOT BE DISCLOSED TO OTHERS FOR ANY PURPOSE OR USED FOR MANUFACTURING PURPOSES WITHOUT WRITTEN PERMISSION FROM AMPHENOL CANADA CORP.