

STRAIGHT PLUG FEAMLE

WIRING DIAGRAM M12 FEMALE:

3 WIRES

VIEW FROM FRONT SIDE

Pin	Wire color
1	Brown
2	-
3	Blue
4	Black

4 WIRES

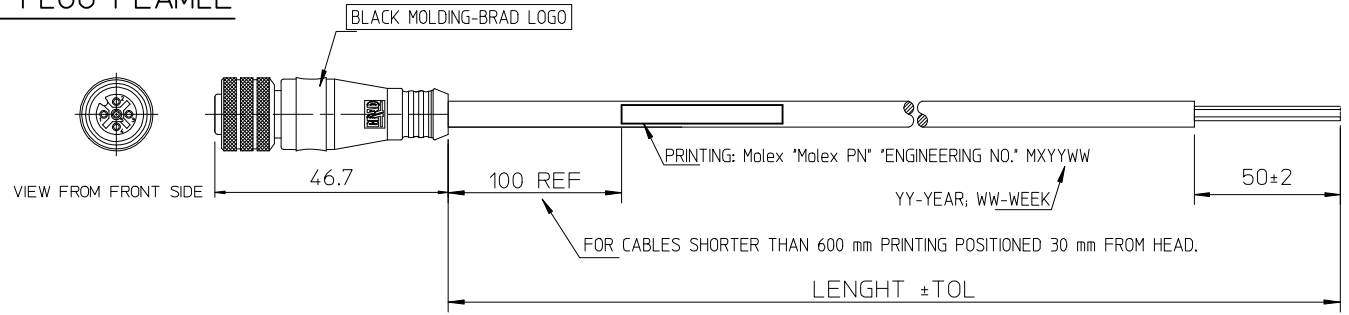
VIEW FROM FRONT SIDE

Pin	Wire color
1	Brown
2	White
3	Blue
4	Black

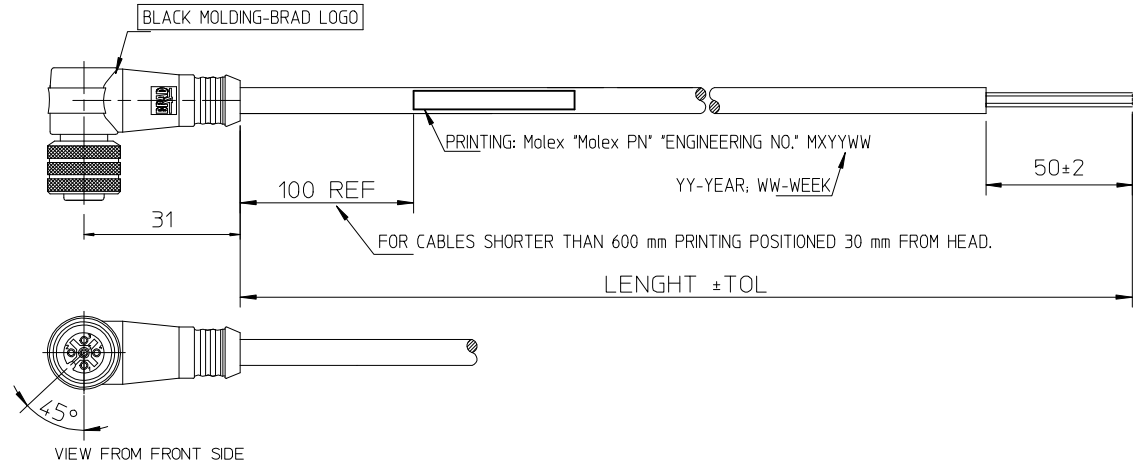
5 WIRES

VIEW FROM FRONT SIDE

Pin	Wire color
1	Brown
2	White
3	Blue
4	Black
5	Grey



90° - PLUG



ENGINEERING P/N KEY DECODING:

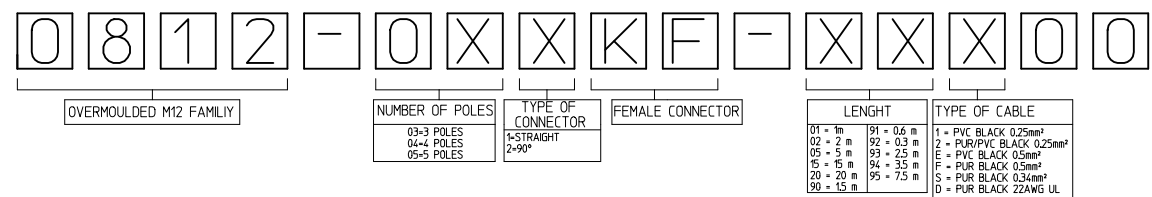


TABLE OF TOLERANCES						
CABLE LENGTH IN METER	TILL/DO	OVER - TILL	OVER - TILL	OVER	OVER	OVER
	1m	1-5m	5-10m	10m	20m	30m
MANUFACTURING TOLERANCES MM						
M8/M12 CABLE CONNECTOR MALE OR FEMALE	+20 -10	+25	+30	+30	+50	+60
M8/M12 CABLE CONNECTOR JUMPERCABLE	+20 -10	+25	+30	+30	+50	+60
M23 CABLE CONNECTOR MALE OR FEMALE			+50	+50	+50	+60
M23 CABLE CONNECTOR JUMPERCABLE			+50	+50	+50	+60

<p>PRINTING UPDATE EC NO: IPG2015-1471 DRWN: JMARSZALEK 2013/09/25 CHKD: MSZWAJKOWSKI 2013/09/25 APPR: MIWASIECZKO 2015/03/20</p>	<p>QUALITY SYMBOLS</p> <p>▽=0 ◻=0</p>	<p>GENERAL TOLERANCES (UNLESS SPECIFIED)</p> <table border="1" style="width: 100%;"> <thead> <tr> <th></th> <th>mm</th> <th>INCH</th> </tr> </thead> <tbody> <tr><td>4 PLACES</td><td>± ---</td><td>± ---</td></tr> <tr><td>3 PLACES</td><td>± ---</td><td>± ---</td></tr> <tr><td>2 PLACES</td><td>± ---</td><td>± ---</td></tr> <tr><td>1 PLACE</td><td>± ---</td><td>± ---</td></tr> <tr><td>0 PLACE</td><td>± ---</td><td>± ---</td></tr> </tbody> </table>		mm	INCH	4 PLACES	± ---	± ---	3 PLACES	± ---	± ---	2 PLACES	± ---	± ---	1 PLACE	± ---	± ---	0 PLACE	± ---	± ---	<p>DIMENSION STYLE</p> <p>MM ONLY</p>	<p>SCALE</p> <p>---</p>	<p>DESIGN UNITS</p> <p>METRIC</p>	<p>FIRST ANGLE PROJECTION</p>	<p>TITLE</p> <p style="font-size: 24px; font-weight: bold;">CSE M12 XP AC FE XM SE</p>
		mm	INCH																						
	4 PLACES	± ---	± ---																						
	3 PLACES	± ---	± ---																						
2 PLACES	± ---	± ---																							
1 PLACE	± ---	± ---																							
0 PLACE	± ---	± ---																							
		<p>DRAFT WHERE APPLICABLE MUST REMAIN WITHIN DIMENSIONS</p>	<p>DRAWN BY</p> <p>HWALCZAK</p>	<p>DATE</p> <p>2012/05/10</p>			<p style="font-size: 36px; font-weight: bold;">molex</p>																		
			<p>CHECKED BY</p> <p></p>	<p>DATE</p> <p></p>																					
			<p>APPROVED BY</p> <p>MDYSZEWSKA</p>	<p>DATE</p> <p>2012/05/28</p>			<p>SD-120065-053</p>																		
			<p>MATERIAL NO.</p> <p>SEE KEY</p>	<p>SIZE</p> <p>A3</p>	<p>THIS DRAWING CONTAINS INFORMATION THAT IS PROPRIETARY TO MOLEX INCORPORATED AND SHOULD NOT BE USED WITHOUT WRITTEN PERMISSION</p>	<p>DOCUMENT NO.</p> <p>SD-120065-053</p>	<p>SHEET NO.</p> <p>1 OF 1</p>																		

STRAIGHT PLUG FEAMLE

WIRING DIAGRAM M12 FEMALE:

3 WIRES

VIEW FROM FRONT SIDE

Pin	Wire color
1	Brown
2	-
3	Blue
4	Black

4 WIRES

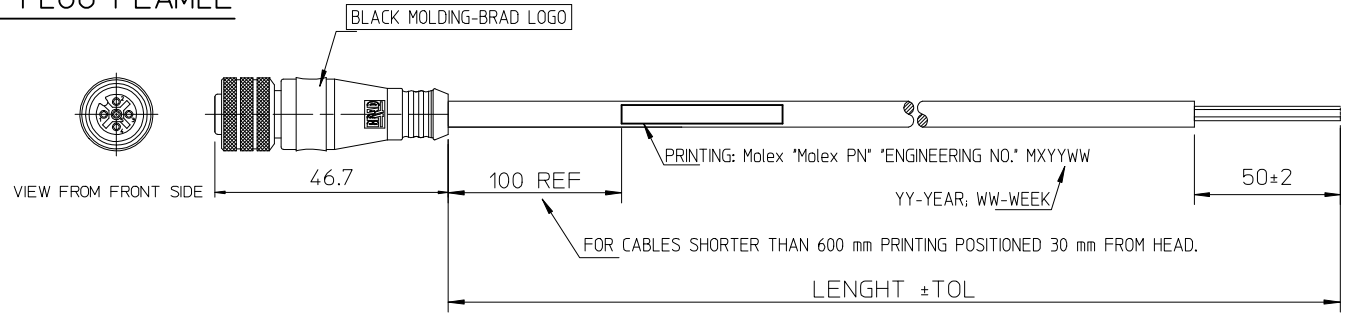
VIEW FROM FRONT SIDE

Pin	Wire color
1	Brown
2	White
3	Blue
4	Black

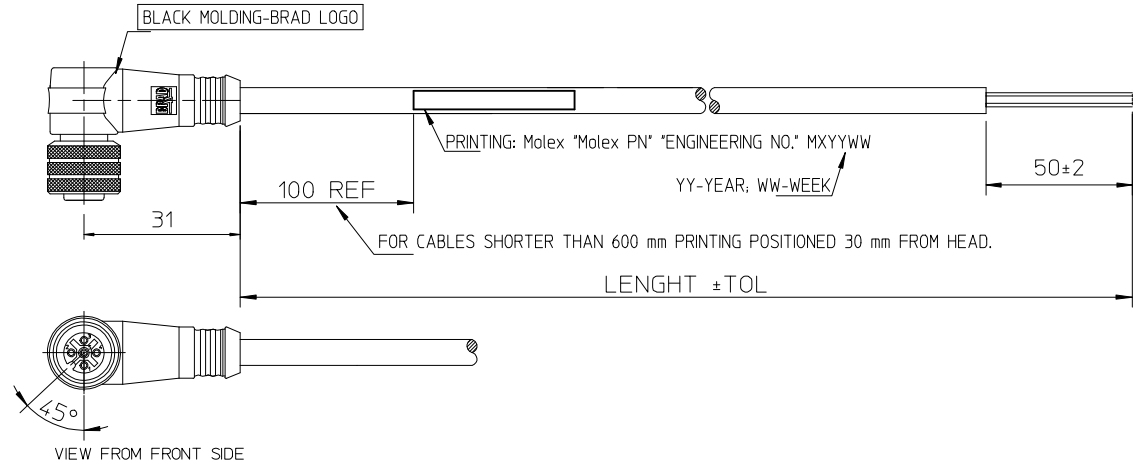
5 WIRES

VIEW FROM FRONT SIDE

Pin	Wire color
1	Brown
2	White
3	Blue
4	Black
5	Grey



90° - PLUG



ENGINEERING P/N KEY DECODING:

0	8	1	2	-	0	X	X	K	F	-	X	X	X	0	0
OVERMOULDED M12 FAMILY					NUMBER OF POLES		TYPE OF CONNECTOR		FEMALE CONNECTOR		LENGTH		TYPE OF CABLE		
					03-3 POLES 04-4 POLES 05-5 POLES		1-STRAIGHT 2-90°				01 = 1m 02 = 2m 05 = 5m 15 = 15m 20 = 20m 90 = 90m		91 = 0.6m 92 = 0.3m 93 = 2.5m 94 = 3.5m 95 = 7.5m		
											1 = PVC BLACK 0.25mm² 2 = PUR/PVC BLACK 0.25mm² E = PVC BLACK 0.5mm² F = PUR BLACK 0.5mm² S = PUR BLACK 0.34mm² D = PUR BLACK 22AWG UL				

TABLE OF TOLERANCES						
CABLE LENGTH IN METER	TILL/DO	OVER - TILL	OVER - TILL	OVER	OVER	OVER
	1m	1-5m	5-10m	10m	20m	30m
MANUFACTURING TOLERANCES MM						
M8/M12 CABLE CONNECTOR MALE OR FEMALE	+20 -10	+25	+30	+30	+50	+60
M8/M12 CABLE CONNECTOR JUMPERCABLE	+20 -10	+25	+30	+30	+50	+60
M23 CABLE CONNECTOR MALE OR FEMALE			+50	+50	+50	+60
M23 CABLE CONNECTOR JUMPERCABLE			+50	+50	+50	+60

<p style="writing-mode: vertical-rl; transform: rotate(180deg);">PRINTING UPDATE</p> <p style="writing-mode: vertical-rl; transform: rotate(180deg);">EC NO: IPG2015-1471</p> <p style="writing-mode: vertical-rl; transform: rotate(180deg);">DRWN: JMARSZALEK 2013/09/25</p> <p style="writing-mode: vertical-rl; transform: rotate(180deg);">CHKD: MSZWAJKOWSKI 2013/09/25</p> <p style="writing-mode: vertical-rl; transform: rotate(180deg);">APPR: MIWASIECZKO 2015/03/20</p>	<p>QUALITY SYMBOLS</p> <p>▽=0</p> <p>◻=0</p>	<p>GENERAL TOLERANCES (UNLESS SPECIFIED)</p> <table border="1" style="width: 100%; text-align: center;"> <thead> <tr> <th></th> <th>mm</th> <th>INCH</th> </tr> </thead> <tbody> <tr><td>4 PLACES</td><td>± ---</td><td>± ---</td></tr> <tr><td>3 PLACES</td><td>± ---</td><td>± ---</td></tr> <tr><td>2 PLACES</td><td>± ---</td><td>± ---</td></tr> <tr><td>1 PLACE</td><td>± ---</td><td>± ---</td></tr> <tr><td>0 PLACE</td><td>± ---</td><td>± ---</td></tr> </tbody> </table> <p>ANGULAR ±---°</p> <p>DRAFT WHERE APPLICABLE MUST REMAIN WITHIN DIMENSIONS</p>		mm	INCH	4 PLACES	± ---	± ---	3 PLACES	± ---	± ---	2 PLACES	± ---	± ---	1 PLACE	± ---	± ---	0 PLACE	± ---	± ---	<p>DIMENSION STYLE</p> <p>MM ONLY</p> <p>DRAWN BY: HWALCZAK</p> <p>DATE: 2012/05/10</p> <p>CHECKED BY:</p> <p>DATE:</p> <p>APPROVED BY: MDYSZEWSKA</p> <p>DATE: 2012/05/28</p> <p>MATERIAL NO.</p> <p>SEE KEY</p> <p>SIZE: A3</p>	<p>SCALE</p> <p>---</p>	<p>DESIGN UNITS</p> <p>METRIC</p>	<p>FIRST ANGLE PROJECTION</p>	<p>TITLE</p> <p style="text-align: center; font-size: 1.2em;">CSE M12 XP AC FE XM SE</p>	<p>DOCUMENT NO.</p> <p style="text-align: center; font-size: 1.2em;">SD-120065-053</p>	<p>SHEET NO.</p> <p style="text-align: center;">1 OF 1</p>
		mm	INCH																								
	4 PLACES	± ---	± ---																								
	3 PLACES	± ---	± ---																								
	2 PLACES	± ---	± ---																								
1 PLACE	± ---	± ---																									
0 PLACE	± ---	± ---																									
<p>molex</p>																											
<p>THIS DRAWING CONTAINS INFORMATION THAT IS PROPRIETARY TO MOLEX INCORPORATED AND SHOULD NOT BE USED WITHOUT WRITTEN PERMISSION</p>																											