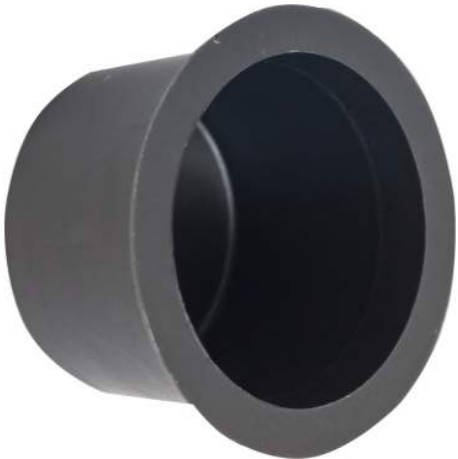


Product data sheet

Characteristics

NSYEBP500

Power distribution block, Linergy, enclosed, terminal plug, for 500 kcmil opening



Complementary

Height	1.1 in (27.94 mm)
Width	1.1 in (27.94 mm)
Depth	0.63 in (16.00 mm)

Ordering and shipping details

Category	21713-IEC ENCLOSED POWER DISTR BLOCKS
Discount Schedule	CP-1
GTIN	785901576679
Nbr. of units in pkg.	1
Package weight(Lbs)	0.16 oz (4.536 g)
Returnability	No
Country of origin	US

Packing Units

Unit Type of Package 1	PCE
Package 1 Height	1.10 in (2.794 cm)
Package 1 width	1.10 in (2.794 cm)
Package 1 Length	0.60 in (1.524 cm)