

MICRO SWITCH
 FREEPORT ILLINOIS U.S.A.
 A DIVISION OF HONEYWELL
 FED MFG CODE 9183E







**SWITCH - TOGGLE
 FLUSH KEY**

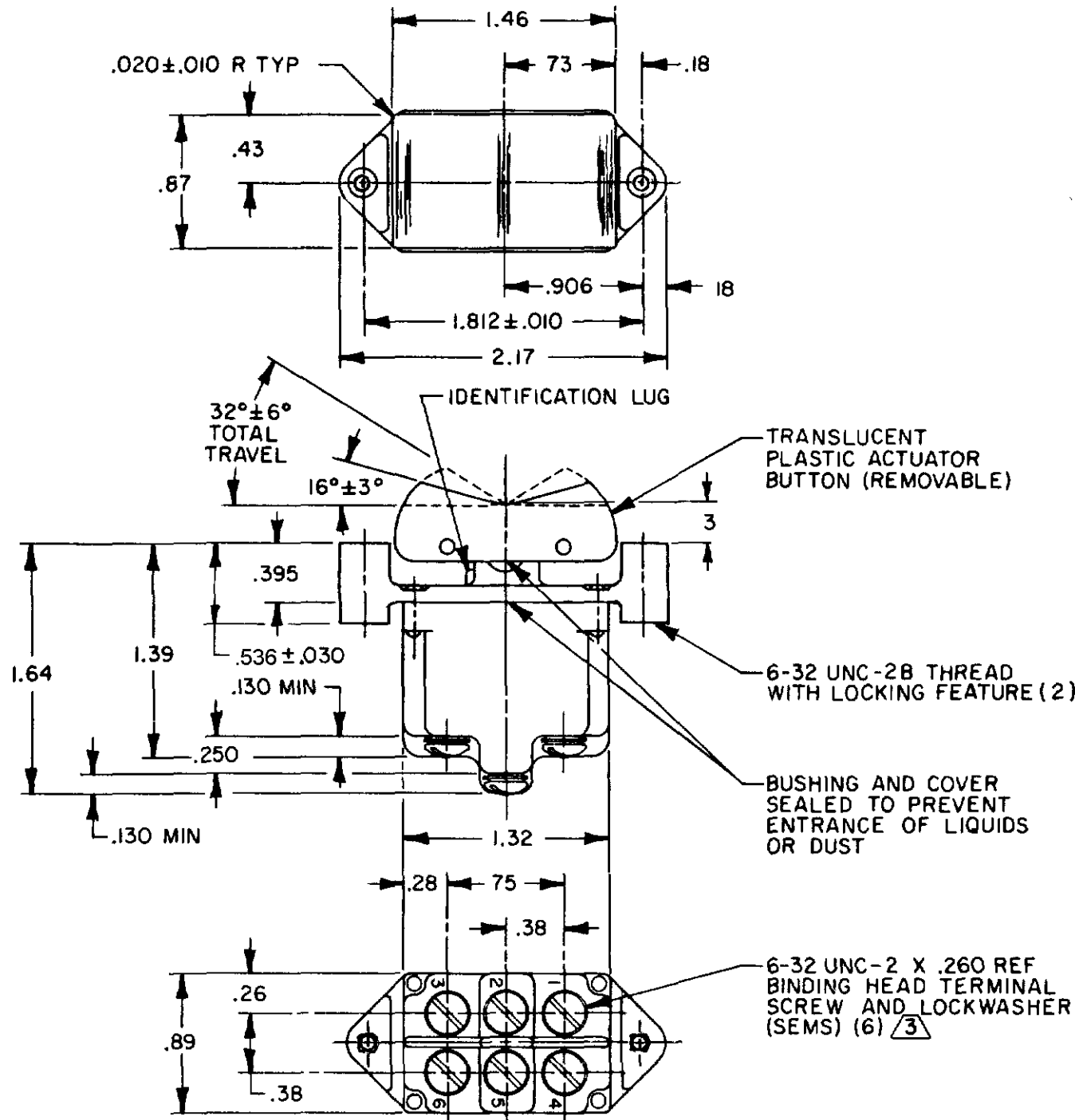
CATALOG LISTING
2TPI SERIES
 CHART 1

THIS DRAWING COVERS A PROPRIETARY ITEM AND IS THE PROPERTY OF MICRO SWITCH, A DIVISION OF HONEYWELL. THIS DRAWING IS NOT TO BE COPIED OR USED WITHOUT THE APPROVAL OF MICRO SWITCH.

CATALOG LISTING	CIRCUIT MADE WITH BUTTON DEPRESSED ON		
	LUG SIDE (1-2, 4-5)	CENTER (1-2, 4-5)	OPPOSITE LUG (2-3, 5-6)
2TPI-1	ON	OFF	ON
2TPI-2	OFF	NONE	ON
2TPI-3	ON	NONE	ON
2TPI-2I	NONE	OFF	ON
2TPI-3I	NONE	ON	ON
2TPI-4	MOM OFF	NONE	ON
2TPI-5	MOM ON	OFF	ON
2TPI-6	MOM ON	NONE	OFF
2TPI-7	MOM ON	OFF	MOM ON
2TPI-8	MOM ON	NONE	ON
(A)	NONE	ON	MOM ON
2TPI-6I	MOM ON	OFF	NONE

ELECTRICAL DATA

L191	15A 125, <u>250</u> , 277 VAC 1/2HP 125 VAC 1HP <u>250</u> , 277 VAC 5A 125 VAC "L"	  
L192	10A 125, <u>250</u> , 277 VAC 1/4HP 125 VAC, 1/2HP <u>250</u> , 277 VAC 3A 125 VAC "L"	  



- NOTES**
- 1 - SWITCH WILL WITHSTAND TEMPERATURE OF 160°F
 - 2 - MICRO SWITCH CATALOG LISTING MARKED ON SIDE OF SWITCH
 - 3 SCREWS FURNISHED UNASSEMBLED
 - 4 APPLIES ONLY TO "ON" AND "MOMENTARY ON" POSITIONS

CATALOG LISTING
 2TPI SERIES
 CHART 1
 PAGE 1 OF 1
 ISSUE 4
 REVISIONS
 A CO-93153 JJA 5 MAY 99
 B CO94412 DLM 13 OCT 99
 C 202714 JAH 30 MAR 01
 CHECK KAG 7 JUL 94
 DRAWN TSM 9 JUN 94
 RASTER
 RELEASE NO CO-78497
 REPLACES

THIRD ANGLE PROJECTION

SCALE FULL

DO NOT SCALE PRINT

TOLERANCES

APPLY TO DESIGN UNITS. CONVERSIONS ARE ONLY FOR REFERENCE. UNLESS NOTED, TOLERANCES ARE:

NO. PLACES	SI METRIC	TOL.	US CUSTOMARY	TOL.
NO PLACES	X	1/64	X	0.015
ONE PLACE	X, X	0.4/0.15	X, X	0.005/0.15
TWO PLACES	X, XX	0.16/0.005	X, XX	0.002/0.15
THREE PLACES	X, XXX		X, XXX	0.0005/0.15

DESIGN UNITS SI METRIC US CUSTOMARY

WEIGHT .14 LB EST